

Taubenheim Gelbvieh

27th Annual Production Sale



MONDAY
FEBRUARY 6, 2017
1:00 PM

SALE FACILITY AT THE RANCH
23685 SARTORIA RD. AMHERST, NE 68812

Cattlemen and Cattlewomen,

It's that time of the year again, and we want to begin by saying hello from all of us at Taubenheim Gelbvieh. It is our pleasure to invite you to our 27th Annual Production Sale at the ranch on Monday, February 6th, 2017.

With beef cattle markets in the state they are, we need to look for cattle that will add pounds to our calf crops, while minimizing input costs. Therefore, we are keeping our cowherd moderate and easy fleshing while adding pounds with increased muscle shape and natural thickness. Using Gelbvieh influenced cattle will help you add the extra pounds needed to make up for an always fluctuating market.

This year we are offering a stout made set of bulls that are correct in their skeletal build, easy fleshing, and powerfully constructed. We feel this group of bulls is one of the most complete sets from top to bottom that we have ever offered. You can look for our bulls to add pounds at weaning, increase feed efficiency, and add great maternal strength. We hope you are as pleased as we are with our group of bulls this year.

Calves are sired by a large selection of AI sires along with herdsires we have raised or purchased. Some of these sires include HYEK Black Impact, Ruppel Gunnison, TAU In Focus 22Z, TAU Grid Topper 43T, SAV Resource, SAV Final Answer, and Connealy Consensus 7229. Our cowherd has been built through a strenuous selection process where we stack A.I and E.T. matings. In doing so, we give our customers the highest quality herdsires and replacement females that we know will be profitable for years to come.

This year we will be offering 42 bred heifers and 21 females guaranteed open. These females come right out of our replacement pens and they are a great opportunity for you to take some of our genetics back to your own herd. You are welcome to stop by and view the bulls or females at your convenience, and there will always be someone at the farm to assist you.

Once again this year we will be exhibiting at the National Western Stock Show in Denver, Colorado. We will have a pen of three and a pen of five Balancer Bulls in the yards; on the hill we will have a bull along with a bred heifer and an open female. We are definitely proud of the way our pens have come together this year and we are excited to show them in Denver. If you come to the Stock Show this year, stop by and see us in the yards or on the hill.

In the end, we are very proud of the bulls and heifers and what they have to offer. There is something for every cattle operation in our offering, and we feel we can satisfy a range of needs. At Taubenheim Gelbvieh our goal has always been to satisfy the customer and help you make a profit. We plan to do that in 2017 with added pounds, decreased inputs through feed efficiency, and fertility.

We look forward to talking to you in the near future, and don't forget to mark your calendars for February 6th.

Thank you,
The Taubenheim's

Dale and Jeannette
308-826-4771

Mike, Renee, Sydney, Seth, and Kale
Mike: 308-233-4704

Justin, Janelle, and Turner
Justin: 308-293-0692

Tanner and Kelli
Tanner: 308-224-7196



Tanner and Kelli Wedding -- May 27, 2016



**2016 NWSS Reserve Champion
Pen of 3 Balancers**

Four generations on the ranch



**2016 NWSS Champion
Pen of 5 Balancers**



**2016 NWSS Reserve Champion
Balancer Junior Show**



Kaisha and Jordan Strong Wedding -- November 26, 2016

**Welcome to the 27th Annual
Taubenheim Gelbvieh Production Sale
Monday, February 6, 2017 1:00 p.m. (CST)
Sale Facility At The Ranch
23685 Sartoria Rd • Amherst, NE 68812**

SELLING
100 Bulls 21 Open Females 42 Bred Females

HERD HEALTH

All bulls have had shots and been poured. Necessary health papers will be supplied with each sale animal.

TRUCKING

Free trucking on bulls of \$4,500 or more-- up to 350 miles, otherwise to central location.

Terms of Sale: Cash

TAUBENHEIM GELBIEH FIRST SEASON BREEDING GUARANTEE

Buyers of all bulls selling for \$4,000 or more injured the first breeding season, will have credit at the next sale at the value of the purchase price minus salvage value. Contact Taubenheim Gelbvieh promptly so the decision to return the bull to Taubenheim Gelbvieh or sold by buyer may be made. Breeding season is defined as the 90 day period following the first turnout of the bulls.

In the event of death of a bull during the first breeding season, a credit of 50% of the sale price will be applied at the next sale for a bull.

If you have a problem and are in need of a replacement for any reason, please contact Taubenheim Gelbvieh as we will be glad to be of service.

All announcements from block take precedence over all written material.

Registration papers available.

Retaining 1/2 semen rights on all bulls.

Can't make the sale? Busy during the sale?

DVAuction
Broadcasting Real-Time Auctions

Never Miss An Auction Again!
Watch & Bid online for FREE!

**Visit www.DVAuction.com
and Register Today!**

For General Questions Please Contact Our Office:
(402) 316-5460 or support@dvauction.com

Taubenheim Gelbvieh is not responsible for any accidents.

BULL BUYERS
All bulls selling are eligible for free board until April 1, 2017
**In Case of Inclement Weather, Call Sale Day Phone
or Listen to KRVN for Information**

Livestock Press Representatives
Jay Elfeldt 308-293-3049
Livestock Plus—Randy Rasby..... 308-539-6195
Midwest Messenger—Chris Beutler..... 402-380-8244

Motel Accommodations
Microtel Inn 308-698-3003
Hampton Inn..... 308-234-3400

AUCTIONEER: Tracy Harl, 46687 789th Rd, Loup City, NE 68853 402-469-3852

Join us for complimentary sale day beef lunch cooked on a Traeger!

Sale Day Phone: 308-826-4771 / Cell: 308-627-5054/308-222-0138/308-233-4704

Jim Blackwell will be taking bids again at the above phone numbers.

FOR INFORMATION CONTACT

Dale Taubenheim
23685 Sartoria Rd.
Amherst, NE 68812
308-826-4771 or 308-222-0138
Email: dtaubenheim@aol.com

Mike Taubenheim
19035 Grand Island Rd.
Amherst, NE 68812
308-233-4704

Justin Taubenheim
308-293-0692
j_tauby5@hotmail.com

Tanner Taubenheim
308-224-7196

www.taubenheimgelbvieh.com

PUREBRED POLLED BLACK BULL

A CONNEALY CONSENSUS 7229

Calved: January 15, 2009 ★ Tattoo: 9122

Birth Weight: 78 Adj. 205-day Wt: 817 Adj. 365-day Wt: 1420

KMK Alliance 6595 I87	Sitz Alliance 6595
CONNEALY CONSENSUS	G A R Ext 916
Blinda of Conanga 004	Rito 616 of 4B20 6807
	Blenda of Conanga 129
Woodhill Admiral 77K	S A F Focus of E R
BLUE LILLY OF CONANGA 16	Woodhill Lass 344-1178
Blue Cash of Conanga 6020	Connealy Timeline
	Blue Time of Conanga

—INDIVIDUAL EPDs—

CED: 3 BW: 2.2 WW: 63 YW: 104 Milk: 34 CEM: 4 RE: .90 MB: 1.01 Fat: .037

The A.I. sire that has taken the Angus breed by storm. We use Consensus 7229 to add muscle, thickness, and power. Calves are extremely massive and powerful with excellent carcass quality.



3/8 POLLED BLACK BULL

B TAU MR GRID TOPPER 43T

AMGV1036179 ★ Calved: February 2, 2007 ★ Tattoo: 43T

Birth Weight: 90 Adj. 205-day Wt: 591

TC GRID TOPPER 355

G A R Grid Maker
TC Pride 8067

TAU MISS TY 3130N

TAU T G Ty 313L
TAU Freedom 102L

—INDIVIDUAL EPDs—

CE: 105 BW: -.3 WW: 42 YW: 87 Milk: 9 TMAT: 30 Gest: -2.2 CED: 103

43T was a member of our 2008 Reserve National Champion Pen of 3 Balancers. He has really been doing the job for us, his progeny are flawless in their structure and balanced in their type, with plenty of rib and muscle. He makes them right.



PUREBRED POLLED BLACK BULL

C HYEK BLACK IMPACT 3960N

AMGV844875 ★ Calved: February 7, 2003 ★ Tattoo: 3960N

HYEK BLACK IMPULSE 1296L

ELK CK Scorpion 2343H ET
OAKK Valley Lady 296J

HYEK BLACK RUBY 9604J

FHG Flying H Extra 150D
HYEK Dottie F6048

—INDIVIDUAL EPDs—

CE: 106 BW: -1 WW: 41 YW: 68 Milk: 15 TMAT: 36 Gest: -5.9 CED: 98

HYEK Black Impact is a bull that we turned to to make females and add power to our herd, and he most certainly has done that. He makes them functional and we will use him for years to come because of that fact.

PUREBRED POLLED BLACK BULL

D GMCC RUPPLE GUNNISON N31

AMGV854851 ★ Calved: January 12, 2003 ★ Tattoo: GMCCN31

Birth Weight: 86 Adj. 205-day Wt: 849 Adj. 365-day Wt: 1178

VRT RUP LAZY TV HOTFUDGEJ357

WAC Fullback 011G
VRT F091

RUP RUPPLE 919L

GKT Bud 11G
RUP Ruppel J Precision 715J

—INDIVIDUAL EPDs—

CE: 107 BW: 0.7 WW: 37 YW: 63 Milk: 19 TMAT: 38 Gest: -0.4 CED: 102

Homozygous black and homozygous polled herd sire we purchased from Corry Ruppel, to use as an outcross in our herd, and for cattlemen who have been using our bulls for several years. Gunnison is doing a great job of breeding desirable traits as you will see his calves come easy and are excellent in giving fleshing ability, muscle, and depth of rib. You will appreciate his calves sale day.

PUREBRED POLLED BLACK BULL

E SAV FINAL ANSWER 0035

13592905 ★ Calved: February 22, 2000 ★ Tattoo: 0035

Birth Weight: 69 Adj. 205-day Wt: 843 Adj. 365-day Wt: 1360

SITZ TRAVELER 8180

G D A R Traveler 71
Sitz Everelda Entense 1137

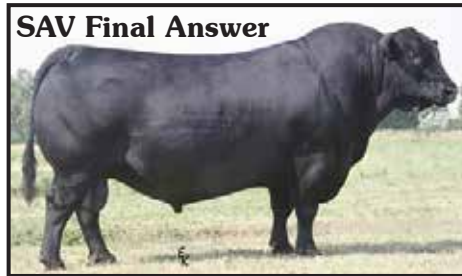
S A V EMULOUS 8145

Bon View Bando 598
S A V Sky Emulous 2124

—INDIVIDUAL EPDs—

BW: -1.0 WW: 61 YW: 104 Milk: 19

Final Answer is quite likely the most well rounded proven A.I. sire in existence today with his combination of low birth weight, good growth to a year, top 4% RE and unmatched maternal and fertility.



PUREBRED POLLED BLACK BULL

F TAU MR. IN FOCUS 22Z

AMGV1215907 ★ Calved: January 29, 2012 ★ Tattoo: TAU22Z

Birth Weight: 68 Weaning Weight: 741 Yearling Weight: 1308

MYTTY IN FOCUS 109

SAF Focus Of ER
MYTTY Countess 906

TAU MS. GUNNISON 028X

GMCC Ruppel Gunnison N32
TAU Ms. Crossover 824U

—INDIVIDUAL EPDs—

CED: 20 BW: -1.5 WW: 67 YW: 107 Milk: 28 TM: 62 CEM: 12

ST: 4 YG: -.44 CW: 32 REA: 69 MB: 1.00 FT: 0.00

A son of MYTTY In Focus out of one of the best Gunnison daughters we own. 22Z is a bull that we sold a few years back that we have turned to for great calving ease, growth and carcass quality. His calves come easy, are vigorous at birth, and they take off once on pasture. We have been very satisfied with his progeny, and we are confident that they will meet your calving ease needs, and add to your bottom line when sale time comes.



PUREBRED POLLED BLACK BULL

C HYEK BLACK IMPACT 3960N

AMGV844875 ★ Calved: February 7, 2003 ★ Tattoo: 3960N

HYEK BLACK IMPULSE 1296L

ELK CK Scorpion 2343H ET
OAKK Valley Lady 296J

HYEK BLACK RUBY 9604J

FHG Flying H Extra 150D
HYEK Dottie F6048

—INDIVIDUAL EPDs—

CE: 106 BW: -1 WW: 41 YW: 68 Milk: 15 TMAT: 36 Gest: -5.9 CED: 98

HYEK Black Impact is a bull that we turned to to make females and add power to our herd, and he most certainly has done that. He makes them functional and we will use him for years to come because of that fact.



REFERENCE SIRE

PB88 HOMOZYGOUS BLACK POLLED BULL

Lot 1 **TAU FULL FORCE 8D ET**

★ Calved: 1/16/2016 ★ Tattoo: TAU 8D ★ Reg. #: AMGV1357897

Birth Weight: 80 **Adj. 205-day Wt: 695**

HYEK Black Impulse 1296L
HYEK BLACK IMPACT 3960N
 HYEK Black Ruby 9604J

TAU Gunnison 106R
TAU MISS GUNNISON 106R 8101U
 TAU Ms Freedom 425P

CED	BW	WW	YW	MK	TM	CEM	ST	YG	CW	REA	MB	FT	FPI
13	0.6	63	97	19	50	1	1	-0.3	28	.52	.33	.04	74.92

TAU 8D- This bull will be our Purebred Futurity Bull at the Denver Stock Show, and we sure are proud of him. He is sired by the great HYEK Black Impact and out of the 8101U donor cow. 8D is bold ribbed, wide based and expressively muscled. When you add in his pedigree and genetic chart it becomes tough to deny this purebred's power. Homozygous Black by birth

BA75 HOMOZYGOUS BLACK POLLED BULL

Lot 2 **TAU MR DEEP IMPACT 126A 27D**

★ Calved: 1/22/2016 ★ Tattoo: TAU 27D ★ Reg. #: AMGV1350203

Birth Weight: 85 **Adj. 205-day Wt: 744**

HYEK Black Impact 3960N
TAU DEEP IMPACT 126A ET
 TAU Ms Gunnison 7211T ET

Connealy Consensus 7229
TAU MS CONSENSUS 364A
 TAU Miss Blackjack 394N

CED	BW	WW	YW	MK	TM	CEM	ST	YG	CW	REA	MB	FT	FPI
12	0.9	71	102	30	65	3	0	-0.3	28	.70	.00	.00	70.97

TAU 27D- A son of our up and coming herd sire TAU Deep Impact 126A that is backed by a great uddered Connealy Consensus 7229 daughter. 27D is a larger framed bull with a ton of power and performance in his pedigree. He weaned off his dam at 744 pounds earning him a 106 ratio. Homozygous Black

BA75 HOMOZYGOUS BLACK POLLED BULL

Lot 4 **TAU MR VICRAM 26D ET**

★ Calved: 1/22/2016 ★ Tattoo: TAU 26D ★ Reg. #: AMGV1350195

Birth Weight: 84 **Adj. 205-day Wt: 743**

STON Xterminator 7X
TJB VICKRAM 342A-ET
 TJB Velvet 912U-ET ET

TAU Gunnison 106R
TAU MISS GUNNISON 106R 8101U
 TAU Ms Freedom 425P

CED	BW	WW	YW	MK	TM	CEM	ST	YG	CW	REA	MB	FT	FPI
12	-0.8	62	91	17	54	6	1	-0.36	22	.53	.23	.03	73.00

TAU 26D- One of the best ¾ bloods we have raised to date. 26D is out of our new herdsire TJB Vickram and backed by our prolific donor TAU Ms. Gunnison 8101U. He is super stout, sound structured and big bodied. He is a true herd sire prospect. Homozygous Black by birth



Lot 4

Reserve Champion Gelbvieh Bull--Iowa State Fair



Lot 1

BA75 BLACK POLLED BULL

Lot 3 **TAU MR GRID TOPPER 43T 39D**

★ Calved: 1/25/2016 ★ Tattoo: TAU 39D ★ Reg. #: AMGV1350320

Birth Weight: 80 **Adj. 205-day Wt: 689**

TC Grid Topper 355
TAU MR GRID TOPPER 43T
 TAU Miss Ty 3130N

TAU Gunnison 106R
TAU MS. GUNNISON 106R 3147A
 TAU Ms Solution 9140W

CED	BW	WW	YW	MK	TM	CEM	ST	YG	CW	REA	MB	FT	FPI
8	1.2	74	102	13	50	6	0	-0.4	32	.70	.10	.00	72.77

TAU 39D- TAU Grid Topper 43T sure does stamp his progeny with a unique look and a ton of power and that is certainly the case with this son. 39D is moderate framed, bold ribbed, and big hipped in a ¾ blood package.



Lot 4

PB94 BLACK HOMOZYGOUS POLLED BULL

Lot 5 **TAU MR. DEEP IMPACT 83D**

★ Calved: 2/4/2016 ★ Tattoo: TAU 83D ★ Reg. #: AMGV1366067

Birth Weight: 88 **Adj. 205-day Wt: 720**

HYEK Black Impact 3960N
TAU DEEP IMPACT 126A ET
 TAU Ms Gunnison 7211T ET

JKGF Trendsetter 55R ET
TAU MS TREND SETTER 3078A
 TAU Freedom 564R

CED	BW	WW	YW	MK	TM	CEM	ST	YG	CW	REA	MB	FT	FPI
10	2.2	70	94	26	61	3	0	-0.49	28	.70	-.43	-.07	57.97

TAU 83D- Another son of TAU Mr. Deep Impact 126A out of a high performing cow. 83D is a 94% purebred that is massive at the ground, wide based and expressive out of his hip. He is sure to add power to a set of Angus based cows. 720 pound weaning weight.

PC75 HOMOZYGOUS BLACK POLLED BULL

Lot 6 **TAU MR CAROLINA LEVERAGE 28D**

★ Calved: 1/23/2016 ★ Tattoo: TAU 28D ★ Reg. #: AMGV1350204

Birth Weight: 75 Adj. 205-day Wt: 855

VRT Lazy Tv Sam U451

CCRO CAROLINA LEVERAGE 3214A

CCRO Belle Of The Ball 1309Y

GMCC Ruppel Gunnison N31

TAU MS GUNNISON 469B

TAU TAU Ms Freedom 210Z

CED	BW	WW	YW	MK	TM	CEM	ST	YG	CW	REA	MB	FT	FPI
11	0.7	79	115	33	73	9	7	-0.3	39	.60	.00	-1.0	76.98

TAU 28D- A larger framed son of our new A.I. sire Carolina Leverage and out of a good Gunnison first calf heifer. 28D caught our eye early and hasn't disappointed since, he is deep bodied, wide made and sound structured. He hit the ground at 75 pounds and weaned off the cows at 855 pounds. He blew up the scales and ratioed at 121. Homozygous Black



Lot 6

BA75 BLACK POLLED BULL

Lot 7 **TAU MR DEEP IMPACT 126A 38D**

★ Calved: 1/25/2016 ★ Tattoo: TAU 38D ★ Reg. #: AMGV1350319

Birth Weight: 82 Adj. 205-day Wt: 702

HYEK Black Impact 3960N

TAU DEEP IMPACT 126A ET

TAU Ms Gunnison 7211T ET

TAU Mr Grid Topper 43T

TAU TAU SERENA 300A

TAU Ms Advance 0189X

CED	BW	WW	YW	MK	TM	CEM	ST	YG	CW	REA	MB	FT	FPI
10	1.8	67	96	20	54	3	0	-0.4	26	.70	-.20	-1.0	62.33

TAU 38D- A ¾ blood son of our Black Impact son 126A. 38D is extremely powerfully constructed, expressively muscled and wide based. Yield Grade and Ribeye Area EPD's rank in the top 10% of the breed.



Lot 7

PC75 BLACK POLLED BULL

Lot 8 **TAU MR FINAL LEAD 107D**

★ Calved: 2/8/2016 ★ Tattoo: TAU 107D ★ Reg. #: AMGV1353066

Birth Weight: 80 Adj. 205-day Wt: 700

TAU Final Countdown 59Y

TAU FINAL LEAD 42A

TAU Miss Tsunami 743T

SLC Freedom 178F ET

TAU MS FREEDOM 718T

TAU Onix 5143R

CED	BW	WW	YW	MK	TM	CEM	ST	YG	CW	REA	MB	FT	FPI
11	0.8	71	98	24	58	8	4	-0.3	28	.50	.00	.00	68.92

TAU 107D- Here is a stout son of TAU Final Lead 42A. 107D exhibits a 700 pound weaning weight, and its easy to see why. He is packed with muscle, rib shape and substance.

BA75 HOMOZYGOUS BLACK POLLED BULL

Lot 10 **TAU MR VICRAM 57D ET**

★ Calved: 1/28/2016 ★ Tattoo: TAU 57D ★ Reg. #: AMGV1350345

Birth Weight: 82 Adj. 205-day Wt: 658

STON Xterminator 7X

TJB VICKRAM 342A-ET

TJB Velvet 912U-ET ET

TAU Gunnison 106R

TAU MISS GUNNISON 106R 8101U

TAU Ms Freedom 425P

CED	BW	WW	YW	MK	TM	CEM	ST	YG	CW	REA	MB	FT	FPI
10	0.9	67	100	20	54	6	1	-0.5	24	.50	.00	.00	68.92

TAU 57D- A stout made ¾ blood son of our new herd sire TJB Vickram and backed by our great donor TAU Ms. Gunnison 8101U. 57D is a larger framed bull that is long bodied, bold ribbed and wide based. Here is a bull that will add power and growth to a set of lower percentage cows. Homozygous Black

BA75 HOMOZYGOUS BLACK POLLED BULL

Lot 9 **TAU MR. TOP GUN 126D**

★ Calved: 2/11/2016 ★ Tattoo: TAU 126D ★ Reg. #: AMGV1360181

Birth Weight: 88 Adj. 205-day Wt: 676

TAU Mr Grid Topper 43T

TAU TOP GUN 292Y

TAU Ms 4153P

BABR Tsunami 447P

TAU TAU MS VIRGINIAN 2105Z

TAU Miss Rodeo 3212N

CED	BW	WW	YW	MK	TM	CEM	ST	YG	CW	REA	MB	FT	FPI
7	1.5	76	102	16	54	4	5	-0.39	32	.59	.09	-.05	73.07

TAU 126D- Here is a TAU Top Gun 292Y son that is thick ended and big footed. 126D ranks in the top of the breed for carcass quality and growth potential. Homozygous Black



Lot 10

PUREBRED GELBVIEH

BA75 BLACK POLLED BULL

Lot 11 **TAU MR GUNNISON 330Y 68D**

★ Calved: 2/2/2016 ★ Tattoo: TAU 68D ★ Reg. #: AMGV1350723

Birth Weight: 86 **Adj. 205-day Wt: 769**

TAU Gunnison 106R
TAU MR GUNNISON 106R 330Y
 TAU Ms 1407 546R

TAU Mr Hy-Per Active 60W ET
TAU HY-PER ACTIVE 60WET 1111Y
 TAU Ms Honor Roll 9109W

CED	BW	WW	YW	MK	TM	CEM	ST	YG	CW	REA	MB	FT	FPI
12	1.3	67	87	27	58	8	5	-0.28	23	.70	.21	-.04	70.06

TAU 68D- A larger framed son of our herd sire TAU 330Y and backed by a massive red cow. 68D is high performing, expressively muscled and wide topped. He weaned off the cow at 769 pounds earning him an impressive ratio of 110.



Lot 11

BA75 BLACK POLLED BULL

Lot 12 **TAU MR GUNNISON 330Y 195D**

★ Calved: 2/21/2016 ★ Tattoo: TAU 195D ★ Reg. #: AMGV1353827

Birth Weight: 84 **Adj. 205-day Wt: 724**

TAU Gunnison 106R
TAU MR GUNNISON 106R 330Y
 TAU Ms 1407 546R

SLC Freedom 178F ET
TAU MS FREEDOM 918W
 TAU Miss Gunnison 787T

CED	BW	WW	YW	MK	TM	CEM	ST	YG	CW	REA	MB	FT	FPI
12	1	65	92	23	54	8	3	-0.2	26	.57	.14	-.03	68.61

TAU 195D- A great grandson of the popular Gunnison bull out of a real good SLC Freedom daughter. 195D offers a 724 pounds weaning weight with plenty of substance of bone and muscle shape.



Lot 14

BA75 HOMOZYGOUS BLACK POLLED BULL

Lot 15 **TAU MR. DEEP IMPACT 269D**

★ Calved: 3/18/2016 ★ Tattoo: TAU 269D ★ Reg. #: AMGV1360860

Birth Weight: 89 **Adj. 205-day Wt: 740**

HYEK Black Impact 3960N
TAU DEEP IMPACT 126A ET
 TAU Ms Gunnison 7211T ET

H A R B Windy 702 JH
TAU MS WINDY 038X
 TAU Miss Little Montana 1175

CED	BW	WW	YW	MK	TM	CEM	ST	YG	CW	REA	MB	FT	FPI
13	0.9	61	88	27	57	4	0	-0.36	23	.62	-.17	-.03	60.42

TAU 269D- A younger calf with a lot of potential, 269D is sired by TAU Deep Impact 126A and out of a powerful HARB Windy 702 daughter. 269D is expressively muscled, thick ended, soggy middled and weaned off the cow at 740 pounds. Homozygous Black

PB88 HOMOZYGOUS BLACK POLLED BULL

Lot 13 **TAU MR. DIMAGGIO 255D**

★ Calved: 3/13/2016 ★ Tattoo: TAU 255D ★ Reg. #: AMGV1365458

Birth Weight: 87 **Adj. 205-day Wt: 765**

HYEK Black Impact 3960N
TAU DIMAGGIO 161AET
 TAU Ms Gunnison 7211T ET

GMCC Ruppel Gunnison N31
TAU TAU MS GUNNISON 287Z
 TAU Ms Grid Topper 0168X

CED	BW	WW	YW	MK	TM	CEM	ST	YG	CW	REA	MB	FT	FPI
13	1.2	65	88	32	63	6	4	-0.45	24	.72	-.03	-.05	67.54

TAU 255D- A high growth son of TAU DiMaggio 161A, a grandson of HYEK Black Impact. 255D is out of a real quality Gunnison daughter. He brings a lot of carcass quality to the table and his pedigree is stacked with maternal quality. He weaned off the cow at 765 pounds as well. Homozygous Black

BA75 HOMOZYGOUS BLACK POLLED BULL

Lot 14 **TAU MR ZZ TOP 94D**

★ Calved: 2/6/2016 ★ Tattoo: TAU 94D ★ Reg. #: AMGV1353050

Birth Weight: 88 **Adj. 205-day Wt: 722**

BABR Who Done It
OGSG ZZ TOP 620Z
 BOKG Salena 620S

TAU Mr Grid Topper 43T
TAU TAU MS 43T 249Z
 TAU Miss Bando 841U

CED	BW	WW	YW	MK	TM	CEM	ST	YG	CW	REA	MB	FT	FPI
8	1.9	69	102	26	61	7	5	-0.23	33	.38	-.04	-.08	66.85

TAU 94D- A ¾ blood son of our herd sire ZZ Top and out of an old show heifer for the kids. 94D combines the power of his sire with the eye appeal of his mother. He is wide topped, big hipped and massive at the ground. A lot of stoutness in this calf that weaned off the cow at 722 pounds. Homozygous Black

PC75 BLACK POLLED BULL

Lot 16 **TAU MR. DIMAGGIO 272D**

★ Calved: 3/18/2016 ★ Tattoo: TAU 272D ★ Reg. #: AMGV1365505

Birth Weight: 93 **Adj. 205-day Wt: 750**

HYEK Black Impact 3960N
TAU DIMAGGIO 161AET
 TAU Ms Gunnison 7211T ET

SLC Freedom 178F ET
TAU MS FREEDOM 811U
 TAU Ms Ambush 6131S

CED	BW	WW	YW	MK	TM	CEM	ST	YG	CW	REA	MB	FT	FPI
10	1.2	63	93	28	59	6	0	-0.42	27	.60	-.17	-.06	62.21

TAU 272D- Another son of TAU DiMaggio 161A, 272D is out of an 8 year old cow that the kids showed back in the day. 272D is a powerful herdsire prospect with a ton of dimension and shape. This 75% purebred weaned off the cow at 750 pounds.

BA50 HOMOZYGOUS BLACK HOMOZYGOUS POLLED BULL

Lot 17 **TAU NO DOUBT 2D ET**

★ Calved: 1/13/2016 ★ Tattoo: TAU 2D ★ Reg. #: AMGV1350164

Birth Weight: 78 Adj. 205-day Wt: 715

Connealy Consensus 7229

TAU UNANIMOUS 11B ET

TAU Miss Rodeo Drive 321N

TAU Gunnison 106R

TAU MISS GUNNISON 106R 8101U

TAU Ms Freedom 425P

CED	BW	WW	YW	MK	TM	CEM	ST	YG	CW	REA	MB	FT	FPI
8	1	67	100	13	46	6	4	-.21	30	.43	.69	.06	83.18

TAU 2D- Here is our Balancer Futurity entry at the National Western Stock Show, and he is pretty good in our opinion. 2D is out of our A.I. sire TAU Unanimous 11B and out of our top donor TAU Ms. Gunnison 8101U.

2D offers a ton of growth in a stout and attractive package. He is level topped, square hipped and powerfully constructed. 2D is a well rounded herd sire prospect for sure. Homozygous Black and Homozygous Polled.

BA50 BLACK POLLED BULL

Lot 18 **TAU MR UNANIMOUS 19D ET**

★ Calved: 1/20/2016 ★ Tattoo: TAU 19D ★ Reg. #: AMGV1350183

Birth Weight: 82 Adj. 205-day Wt: 716

Connealy Consensus 7229

TAU UNANIMOUS 11B ET

TAU Miss Rodeo Drive 321N

TAU Gunnison 106R

TAU MISS GUNNISON 106R 8101U

TAU Ms Freedom 425P

CED	BW	WW	YW	MK	TM	CEM	ST	YG	CW	REA	MB	FT	FPI
9	0.8	67	100	20	54	6	0	-.47	30	.60	.36	-.02	77.42

TAU 19D- A high growth son of the 2015 Balancer Futurity Champion TAU Unanimous 11B, 19D is out of the 8101U donor and has a ton of quality. He is a larger framed bull that is long bodied and high performing.

Weaning weight ratio of 110.

BA50 HOMOZYGOUS BLACK POLLED BULL

Lot 20 **TAU MR FINAL COUNTDOWN 10D ET**

★ Calved: 1/17/2016 ★ Tattoo: TAU 10D ★ Reg. #: AMGV1353731

Birth Weight: 80 Adj. 205-day Wt: 793

S A V Final Answer 0035

TAU FINALCOUNTDOWN 59Y

TAU MS Gunnison 7211T ET

TAU Gunnison 106R

TAU MISS GUNNISON 106R 8101U

TAU Ms Freedom 425P

CED	BW	WW	YW	MK	TM	CEM	ST	YG	CW	REA	MB	FT	FPI
12	0.7	73	108	17	54	8	4	-.40	30	.60	.40	.00	82.44

TAU 10D- An impressive son of TAU Final Countdown 59Y out of our donor TAU Ms. Gunnison 8101U. 10D is a larger framed bull that offers a ton of length and extension and couples it with plenty of substance and width. He weaned off the cow at 793 pounds, don't miss this guy on sale day. Homozygous Black

BA63 HOMOZYGOUS BLACK POLLED BULL

Lot 21 **TAU MR GRID TOPPER 43T 23D**

★ Calved: 1/22/2016 ★ Tattoo: TAU 23D ★ Reg. #: AMGV1350199

Birth Weight: 78 Adj. 205-day Wt: 664

TC Grid Topper 355

TAU MR GRID TOPPER 43T

TAU Miss Ty 3130N

TAU Amherst 238Y

TAU MS AMHERST 3077A

TAU Miss Bushwacker 311N

CED	BW	WW	YW	MK	TM	CEM	ST	YG	CW	REA	MB	FT	FPI
8	1.3	74	104	16	54	6	2	-.30	33	.60	.10	.00	73.13

TAU 23D- A standout son of TAU Mr. Grid Topper 43T, that is stamped with the look we have come to expect from his sire. 23D is moderate, soggy middled and stout hipped. Homozygous Black



Lot 17

BA50 BLACK POLLED BULL

Lot 19 **TAU MR UNANIMOUS 29D ET**

★ Calved: 1/23/2016 ★ Tattoo: TAU 29D ★ Reg. #: AMGV1350196

Birth Weight: 85 Adj. 205-day Wt: 626

Connealy Consensus 7229

TAU UNANIMOUS 11B ET

TAU Miss Rodeo Drive 321N

TAU Gunnison 106R

TAU MISS GUNNISON 106R 8101U

TAU Ms Freedom 425P

CED	BW	WW	YW	MK	TM	CEM	ST	YG	CW	REA	MB	FT	FPI
9	0.8	67	100	20	54	6	0	-.47	30	.60	.36	-.02	77.42

TAU 29D- Another son of TAU Unanimous 11B out of the 8101U donor cow here. He is a larger framed herdsire prospect that offers a lot of length, extension and muscle shape.



Lot 20

BA50 HOMOZYGOUS BLACK POLLED BULL

Lot 22 **TAU MR FINAL ANSWER 24D**

★ Calved: 1/22/2016 ★ Tattoo: TAU 24D ★ Reg. #: AMGV1350200

Birth Weight: 78 Adj. 205-day Wt: 683

Sitz Traveler 8180

S A V FINAL ANSWER 0035

S A V Emulous 8145

HYEK Black Impact 3960N

TAU MS. IMPACT 422B ET

TAU Ms Gunnison 106R 8204U

CED	BW	WW	YW	MK	TM	CEM	ST	YG	CW	REA	MB	FT	FPI
15	-0.7	74	112	22	60	6	6	.01	35	.58	.30	.04	82.35

TAU 24D- A calving ease son of the always popular SAV Final Answer. 24D is deep bodied and wide made, and his genetic chart reads with plenty of calving ease and growth. Homozygous Black

BALANCERS

BA50 HOMOZYGOUS BLACK POLLED BULL

Lot 23 **TAU MR BRILLIANCE 3D ET**

★ Calved: 1/15/2016 ★ Tattoo: TAU 3D ★ Reg. #: AMGV1350166

Birth Weight: 72 **Adj. 205-day Wt: 748**

S A V Bismarck 5682

S A V BRILLIANCE 8077

S A V Blackcap May 5270

GMCC Ruppel Gunnison N31

TAU GUNNISON 5151R

TAU Miss Bennets Bonus 230M

CED	BW	WW	YW	MK	TM	CEM	ST	YG	CW	REA	MB	FT	FPI
16	-0.6	63	92	27	56	8	1	-.23	24	.86	.35	.00	75.37

TAU 3D- A calving ease son of SAV Brilliance and our donor TAU Ms. Gunnison 5151R. 3D is long bodied, stout hipped and big footed. He hit the ground at 72 pounds and I would expect him to be safe for use on heifers. Homozygous Black

**Lot 23**

BA63 HOMOZYGOUS BLACK POLLED BULL

Lot 24 **TAU MR SANDHILLS 21D ET**

★ Calved: 1/21/2016 ★ Tattoo: TAU 21D ★ Reg. #: AMGV1350190

Birth Weight: 70 **Adj. 205-day Wt: 629**

CTR Sandman 6523S

CTR CTR SANDHILLS 0065X

CTR 7281T

TAU Gunnison 106R

TAU MISS GUNNISON 106R 8101U

TAU Ms Freedom 425P

CED	BW	WW	YW	MK	TM	CEM	ST	YG	CW	REA	MB	FT	FPI
11	2	68	97	15	49	7	1	-.30	27	.50	.30	.00	73.88

TAU 21D- Here is an attractive son of the Sandhills bull. 21D is level topped, long bodied, and square hipped with a sound structure and skeletal build. Homozygous Black

BA50 HOMOZYGOUS BLACK POLLED BULL

Lot 25 **TAU MR IN FOCUS 22Z 22D ET**

★ Calved: 1/21/2016 ★ Tattoo: TAU 22D ★ Reg. #: AMGV1350191

Birth Weight: 68 **Adj. 205-day Wt: 656**

Mytty In Focus

TAU TAU MR IN FOCUS 22Z

TAU Ms Gunnison 028X

TAU Gunnison 106R

TAU MISS GUNNISON 106R 8101U

TAU Ms Freedom 425P

CED	BW	WW	YW	MK	TM	CEM	ST	YG	CW	REA	MB	FT	FPI
15	-0.2	66	100	20	53	10	3	-.50	26	.60	.50	.00	83.31

TAU 22D- Another son of embryo calf out of TAU Mr. In Focus 22Z and TAU Ms. Gunnison 8101U. 22D is a low birthweight bull that should add calving ease, growth and carcass quality to your calf crop. Homozygous Black. NHF

BA50 HOMOZYGOUS BLACK POLLED BULL

Lot 26 **TAU MR. FOCUS 22Z 5D ET**

★ Calved: 1/15/2016 ★ Tattoo: TAU 5D ★ Reg. #: AMGV1357905

Birth Weight: 65 **Adj. 205-day Wt: 676**

Mytty In Focus

TAU TAU MR IN FOCUS 22Z

TAU Ms Gunnison 028X

TAU Gunnison 106R

TAU MISS GUNNISON 106R 8101U

TAU Ms Freedom 425P

CED	BW	WW	YW	MK	TM	CEM	ST	YG	CW	REA	MB	FT	FPI
18	-1.3	66	101	14	47	11	2	-.36	28	.70	.76	.04	90.96

TAU 5D- A low birth weight son of TAU Mr. In Focus 22Z and our donor TAU Ms. Gunnison 8101U. 5D is as eye appealing as they come with a tremendous amount of width and power. 5D has a ton of herdsire potential and is backed by a great pedigree and EPD profile. 5D will be headed to Denver with us. Homozygous Black. NHF

**Lot 26**

BA50 BLACK POLLED BULL

Lot 27 **TAU MR GRID TOPPER 43T 32D**

★ Calved: 1/24/2016 ★ Tattoo: TAU 32D ★ Reg. #: AMGV1350207

Birth Weight: 80 **Adj. 205-day Wt: 749**

TC Grid Topper 355

TAU MR GRID TOPPER 43T

TAU Miss Ty 3130N

TAU Top Gun 292Y

TAU MS TOP GUN 339A

TAU Hyline Right Time 6105S

CED	BW	WW	YW	MK	TM	CEM	ST	YG	CW	REA	MB	FT	FPI
7	1.6	74	105	12	49	5	2	-.40	34	.60	.20	-.10	74.74

TAU 32D- A powerful son of TAU Mr. Grid Topper 43T that has the look of his sire. 32D is backed by a great TAU Top Gun 292Y daughter, and excels in growth and carcass quality. He weaned off the cow at 749 pounds.

**Donor Dam 8101U**



Lot 28

BA38 HOMOZYGOUS BLACK POLLED BULL

Lot 29 **TAU MR RESOURCE 25D ET**

★ Calved: 1/22/2016 ★ Tattoo: TAU 25D ★ Reg. #: AMGV1350193
Birth Weight: 84 **Adj. 205-day Wt: 610**

Rito 707 Of Ideal 3407 7075

S A V RESOURCE 1441

S A V Blackcap May 4136

TAU Gunnison 106R

TAU MISS GUNNISON 106R 8101U

TAU Ms Freedom 425P

CED	BW	WW	YW	MK	TM	CEM	ST	YG	CW	REA	MB	FT	FPI
8	0.7	72	122	24	60	2	0	-0.20	41	.90	.20	.00	76.62

TAU 25D- An embryo calf out of SAV Resource and our powerful donor cow TAU Ms. Gunnison 8101U. 25D is moderate in his build, and is packed with muscle, rib shape and mass. Growth and carcass EPD's ranking towards the top of the breed. Homozygous Black

BA38 HOMOZYGOUS BLACK POLLED BULL

Lot 31 **TAU MR RESOURCE 14D ET**

★ Calved: 1/18/2016 ★ Tattoo: TAU 14D ★ Reg. #: AMGV1350172
Birth Weight: 80 **Adj. 205-day Wt: 742**

Rito 707 Of Ideal 3407 7075

S A V RESOURCE 1441

S A V Blackcap May 4136

TAU Gunnison 106R

TAU MISS GUNNISON 106R 8101U

TAU Ms Freedom 425P

CED	BW	WW	YW	MK	TM	CEM	ST	YG	CW	REA	MB	FT	FPI
10	-0.3	69	124	22	56	2	0	-0.29	44	.92	.62	.07	87.54

TAU 14D- An impressive son of SAV Resource out of our great donor TAU Ms. Gunnison 8101U. 14D brings a ton of growth and performance to the table in an extremely big hiped and powerful package. 14D weaned off the cow at 760 pounds and he offers plenty of growth and carcass quality in his EPD profile. He will be making the trip to Denver with us. Homozygous Black by birth

BA38 BLACK POLLED BULL

Lot 32 **TAU MR IN FOCUS 22Z 33D**

★ Calved: 1/24/2016 ★ Tattoo: TAU 33D ★ Reg. #: AMGV1350208
Birth Weight: 65 **Adj. 205-day Wt: 628**

Mytty In Focus

TAU TAU MR IN FOCUS 22Z

TAU Ms Gunnison 028X

TAU Mr Gunnison 106R 230U

TAU 4112B

0202X

CED	BW	WW	YW	MK	TM	CEM	ST	YG	CW	REA	MB	FT	FPI
14	-0.3	63	98	26	59	9	2	-0.40	27	.70	.50	-1.0	83.12

TAU 33D- A low birthweight son of TAU Mr. In Focus 22Z. 33D is a bull that should work on heifers, and still add mass and maternal quality to a calf crop. NHF

BA50 HOMOZYGOUS BLACK POLLED BULL

Lot 28 **TAU MR IN FOCUS 22Z 13D ET**

★ Calved: 1/18/2016 ★ Tattoo: TAU 13D ★ Reg. #: AMGV1350174
Birth Weight: 70 **Adj. 205-day Wt: 630**

Mytty In Focus

TAU TAU MR IN FOCUS 22Z

TAU Ms Gunnison 028X

TAU Gunnison 106R

TAU MISS GUNNISON 106R 8101U

TAU Ms Freedom 425P

CED	BW	WW	YW	MK	TM	CEM	ST	YG	CW	REA	MB	FT	FPI
15	-0.2	66	100	20	53	10	3	-0.50	26	.60	.50	.00	83.31

TAU 13D- A low birth weight, calving ease son of TAU Mr. In Focus 22Z and out of our donor TAU Ms. Gunnison 8101U. 13D has an attractive build and is sound structured. 13D offers a balanced genetic profile. Homozygous Black. NHC

BA50 HOMOZYGOUS BLACK POLLED BULL

Lot 30 **TAU MR CONSENSUS 35D ET**

★ Calved: 1/24/2016 ★ Tattoo: TAU 35D ★ Reg. #: AMGV1350314
Birth Weight: 80 **Adj. 205-day Wt: 652**

Connealy Consensus

CONNEALY CONSENSUS 7229

Blue Lilly Of Conanga 16

GMCC Ruppel Gunnison N31

TAU GUNNISON 5151R

TAU Miss Bennets Bonus 230M

CED	BW	WW	YW	MK	TM	CEM	ST	YG	CW	REA	MB	FT	FPI
14	0.2	65	100	26	59	7	1	-0.09	30	.84	.65	.04	84.27

TAU 35D- Here is a full brother to our A.I. sire TAU Outright 162A. 35D is out of the always popular Connealy Consensus 7229, and he possess the power and stoutness we expect from his sire group. Homozygous Black



Lot 31

All weaning weights
 are produced with
 mama's milk and grass--
 not put on artificially
 by creep feed.

A true testament to what
 the cow and calf can do.

BA63 BLACK POLLED BULL

Lot 33 **TAU MR GRID TOPPER 43T 17D**

★ Calved: 1/19/2016 ★ Tattoo: TAU 17D ★ Reg. #: AMGV1349908

Birth Weight: 80 **Adj. 205-day Wt: 718**

TC Grid Topper 355

TAU MR GRID TOPPER 43T

TAU Miss Ty 3130N

EGL Northern Wind P068 ET

TAU MS NORTH WIND 3043A

TAU Titanium 9138W

CED	BW	WW	YW	MK	TM	CEM	ST	YG	CW	REA	MB	FT	FPI
5	1.3	79	99	13	48	5	2	-.50	30	.80	.10	-.10	70.78

TAU 17D- A stout son of TAU Mr. Grid Topper 43T, and he has the look and power that we have come to expect from his sire. 17D weaned off the cow at 718 pounds and if you're looking to sell your calves at weaning his WW EPD is in the to 15% of the breed.

**Lot 33**

BA38 HOMOZYGOUS BLACK POLLED BULL

Lot 34 **TAU MR IN FOCUS 22Z 37D**

★ Calved: 1/24/2016 ★ Tattoo: TAU 37D ★ Reg. #: AMGV1350318

Birth Weight: 72 **Adj. 205-day Wt: 610**

Mytty In Focus

TAU TAU MR IN FOCUS 22Z

TAU Ms Gunnison 028X

TAU Mr Grid Topper 43T

TAU MS GRID TOPPER 43T 4037B

TAU Ms 191Y

CED	BW	WW	YW	MK	TM	CEM	ST	YG	CW	REA	MB	FT	FPI
14	0.2	70	111	23	59	8	4	-.40	36	.60	.50	.00	86.60

TAU 37D- A powerful son of TAU Mr. In Focus 22Z that is backed by a good 43T daughter. 37D is a low birthweight bull that has plenty of power and substance to boot. Homozygous Black. NHC

**Lot 36**

BA63 HOMOZYGOUS BLACK POLLED BULL

Lot 37 **TAU MR. AFFLUENT 34D ET**

★ Calved: 1/24/2016 ★ Tattoo: TAU 34D ★ Reg. #: AMGV1353028

Birth Weight: 84 **Adj. 205-day Wt: 722**

Vision Prosperity 2324

TAU AFFLUENT 225B

TAU Ms Gunnison 028X

GMCC Ruppel Gunnison N31

TAU MS GUNNISON 7211T ET

TAU Ms Dr P Of 516E 716G

CED	BW	WW	YW	MK	TM	CEM	ST	YG	CW	REA	MB	FT	FPI
11	1.9	70	103	30	65	7	5	-.40	34	.80	.30	.00	77.62

TAU 34D- A son of our new A.I. sire TAU Affluent 225D backed by a TAU Final Countdown 59Y's dam. 34D is massive at the ground, thick and expressive. He weaned off his recip cow at 722 pounds, and will be headed to the Denver Stock Show. Homozygous Black

BA63 HOMOZYGOUS BLACK POLLED BULL

Lot 35 **TAU MR CAROLINA LEVERAGE 43D**

★ Calved: 1/25/2016 ★ Tattoo: TAU 43D ★ Reg. #: AMGV1350326

Birth Weight: 72 **Adj. 205-day Wt: 625**

VRT Lazy Tv Sam U451

CCRO CAROLINA LEVERAGE 3214A

CCRO Belle Of The Ball 1309Y

TAU Mr Grid Topper 43T

TAU TAU MS ELSA 402B

TAU Miss Gridiron 131Y

CED	BW	WW	YW	MK	TM	CEM	ST	YG	CW	REA	MB	FT	FPI
9	0.4	74	109	25	62	7	2	-.40	35	.60	.10	-.10	75.52

TAU 43D- A powerful son of our new A.I. sire Carolina Leverage and a great first calf heifer. 43D is backed by a great pedigree, a powerful set of epd's and a ton of muscle shape. Homozygous Black

BA50 HOMOZYGOUS BLACK POLLED BULL

Lot 36 **TAU MR FINAL ANSWER 20D**

★ Calved: 1/21/2016 ★ Tattoo: TAU 20D ★ Reg. #: AMGV1349909

Birth Weight: 72 **Adj. 205-day Wt: 782**

Sitz Traveler 8180

S A V FINAL ANSWER 0035

S A V Emulous 8145

PLA Big Dog 101Y

TAU MS BIG GIRL 4021B

TAU Ms Gunnison 917W

CED	BW	WW	YW	MK	TM	CEM	ST	YG	CW	REA	MB	FT	FPI
16	-1.3	82	114	25	63	10	8	.00	35	.61	.37	.04	85.91

TAU 20D- A calving ease son of the always popular SAV Final Answer. 20D is long bodied, square built and big hiped. This Final Answer son hit the ground at 72 pounds and weaned off the cow at 782 pounds. A sleep at night calving ease son with plenty of growth is what you will get with this bull. Homozygous Black

**Lot 37**



BA50 HOMOZYGOUS BLACK HOMOZYGOUS POLLED BULL

Lot 38 **TAU MR RESOURCE 30D ET**

★ Calved: 1/23/2016 ★ Tattoo: TAU 30D ★ Reg. #: AMGV1350197

Birth Weight: 84 **Adj. 205-day Wt: 779**

Rito 707 Of Ideal 3407 7075

S A V RESOURCE 1441

S A V Blackcap May 4136

GMCC Ruppel Gunnison N31

TAU GUNNISON 5151R

TAU Miss Bennets Bonus 230M

CED	BW	WW	YW	MK	TM	CEM	ST	YG	CW	REA	MB	FT	FPI
14	-0.1	61	101	32	62	4	0	-49	30	1.27	.60	.06	84.33

TAU 30D- A big time herd sire prospect here sired by SAV Resource and out of a great donor TAU Ms. Gunnison 5151R. 30D has been a favorite for a while, he is moderate framed, big bodied and expressively muscled. He also weaned off the cow at 779 pounds and sports a great EPD profile. Homozygous Black and Homozygous Polled

BA38 HOMOZYGOUS BLACK POLLED BULL

Lot 39 **TAU MR. GRID TOPPER 43T 41D**

★ Calved: 1/25/2016 ★ Tattoo: TAU 41D ★ Reg. #: AMGV1357914

Birth Weight: 62 **Adj. 205-day Wt: 670**

TC Grid Topper 355

TAU MR GRID TOPPER 43T

TAU Miss Ty 3130N

S A V Final Answer 0035

TAU TAU MS FINAL ANSWER 314A

TAU Ms Janelle 108Y

CED	BW	WW	YW	MK	TM	CEM	ST	YG	CW	REA	MB	FT	FPI
12	-0.6	73	107	10	46	6	3	-27	32	.64	.32	.00	80.59

TAU 41D- Another moderate framed son of TAU Mr. Grid Topper 43T. 41D is an eye appealing bull that is sound structured, soggy middle and backed by a solid set of EPD's. Homozygous Black

BA50 HOMOZYGOUS BLACK POLLED BULL

Lot 41 **TAU MR RESOURCE 40D ET**

★ Calved: 1/24/2016 ★ Tattoo: TAU 40D ★ Reg. #: AMGV1350316

Birth Weight: 87 **Adj. 205-day Wt: 683**

Rito 707 Of Ideal 3407 7075

S A V RESOURCE 1441

S A V Blackcap May 4136

GMCC Ruppel Gunnison N31

TAU GUNNISON 5151R

TAU Miss Bennets Bonus 230M

CED	BW	WW	YW	MK	TM	CEM	ST	YG	CW	REA	MB	FT	FPI
10	1	70	119	32	67	3	0	-18	43	1.20	.22	.03	76.75

TAU 40D- Here is a son of the popular A.I. sire SAV Resource and the Dam of TAU Outright 162A. 40D is deep bodied, sound structured and big footed. His EPD's for growth and carcass are real impressive. Homozygous Black

BA63 HOMOZYGOUS BLACK POLLED BULL

Lot 42 **TAU MR CAROLINA LEVERAGE 47D**

★ Calved: 1/26/2016 ★ Tattoo: TAU 47D ★ Reg. #: AMGV1350328

Birth Weight: 76 **Adj. 205-day Wt: 680**

VRT Lazy Tv Sam U451

CCRO CAROLINA LEVERAGE 3214A

CCRO Belle Of The Ball 1309Y

TAU Mr Grid Topper 43T

TAU MS GRID TOPEPR 43T 4175B

TAU Ms Tuned In 0130X

CED	BW	WW	YW	MK	TM	CEM	ST	YG	CW	REA	MB	FT	FPI
9	1.1	76	114	25	63	0	4	-30	39	.60	.10	-10	76.12

TAU 47D- A son of Carolina Leverage out of a moderate 43T daughter. 47D is a big footed bull that offers a lot of width, dimension and muscle shape. Homozygous Black

BA38 HOMOZYGOUS BLACK POLLED BULL

Lot 40 **TAU MR. IN FOCUS 42D**

★ Calved: 1/25/2016 ★ Tattoo: TAU 42D ★ Reg. #: AMGV1366203

Birth Weight: 70 **Adj. 205-day Wt: 651**

S A F Focus Of E R

MYTTY IN FOCUS

Mytty Countess 906

ELK CK Wild Bill 42U

TAU MS. WILD BILL 4001B

TAU Ms Gunnison 135Y

CED	BW	WW	YW	MK	TM	CEM	ST	YG	CW	REA	MB	FT	FPI
17	-1.4	66	99	26	58	10	4	-21	27	.27	.51	-.01	84.82

TAU 42D- Here is a son of the one and only MYTTY In Focus and backed by a powerful Wild Bill daughter. 42D is a true calving ease prospect that offers calving ease and birth weight EPD's ranking at the top of the breed. Homozygous Black



BA63 BLACK POLLED BULL

Lot 43 **TAU MR. GUNNISON 48D**

★ Calved: 1/26/2016 ★ Tattoo: TAU 48D ★ Reg. #: AMGV1357920

Birth Weight: 78 **Adj. 205-day Wt: 696**

VRT RUP Lazy Tv Hotfudge J357

GMCC RUPPLE GUNNISON N31

RUP Ruppel 919L

S A V Final Answer 0035

TAU MS. FINAL ANSWER 407B ET

TAU Miss Rodeo Drive 321N

CED	BW	WW	YW	MK	TM	CEM	ST	YG	CW	REA	MB	FT	FPI
14	1.1	64	89	27	59	9	7	-42	24	.67	.07	-.02	69.42

TAU 48D- A Gunnison N31 son that is out of a powerful daughter of SAV Final Answer. 48D is soggy middled, wide topped and thick ended.

BA63 HOMOZYGOUS BLACK POLLED BULL

Lot 44 | **TAU MR. LEVERAGE 49D**

★ Calved: 1/27/2016 ★ Tattoo: TAU 49D ★ Reg. #: AMGV1366772

Birth Weight: 70 **Adj. 205-day Wt: 722**

VRT Lazy Tv Sam U451

CCRO CAROLINA LEVERAGE 3214A

CCRO Belle Of The Ball 1309Y

TAU TAU Mr In Focus 22Z

TAU MS. IN FOCUS 22Z 466B

TAU Ms. Frontman 2069Z

CED	BW	WW	YW	MK	TM	CEM	ST	YG	CW	REA	MB	FT	FPI
12	-0.2	74	110	35	72	9	4	-46	35	.69	.18	-.04	80.74

TAU 49D- A 63% son of the new A.I. sire Carolina Leverage. 49D is moderate framed, big footed and wide based. Study his EPD's and you won't be disappointed in his balanced profile. He hit the ground at 70 pounds and weaned off at 722 pounds. Homozygous Black

**Lot 44**

BA63 HOMOZYGOUS BLACK POLLED BULL

Lot 45 | **TAU MR OUTRIGHT 50D**

★ Calved: 1/27/2016 ★ Tattoo: TAU 50D ★ Reg. #: AMGV1350336

Birth Weight: 76 **Adj. 205-day Wt: 702**

Connealy Consensus 7229

TAU OUTRIGHT 162A

TAU Gunnison 5151R

GMCC Ruppel Gunnison N31

TAU MS GUNNISON 443B

TAU Taums Gridtopper 43T 263Z

CED	BW	WW	YW	MK	TM	CEM	ST	YG	CW	REA	MB	FT	FPI
15	-0.1	68	104	26	59	9	9	-30	33	.90	.40	.00	81.04

TAU 50D- A low birthweight son of TAU Outright 162A that is backed by another good Gunnison first calf heifer. 50 is rugged in his build being big footed wide based and expressively muscled. Homozygous Black

**Lot 47**

BA50 BLACK POLLED BULL

Lot 48 | **TAU MR. FOCUS 22Z 55D**

★ Calved: 1/27/2016 ★ Tattoo: TAU 55D ★ Reg. #: AMGV1357921

Birth Weight: 62 **Adj. 205-day Wt: 638**

Mytty In Focus

TAU TAU MR IN FOCUS 22Z

TAU Ms Gunnison 028X

TAU Mr Gunnison 106R 230U

TAU MS GUNNISON 230U 464B

TAU Woodhill Foresight 1049Y

CED	BW	WW	YW	MK	TM	CEM	ST	YG	CW	REA	MB	FT	FPI
14	-1.5	67	105	25	60	10	2	-31	32	.62	.54	-.02	87.66

TAU 55D- Another calving ease prospect, this time out of TAU Mr. In Focus 22Z and a wonderful first calver that goes back to Gunnison. 55D was born at 62 pounds and is in the top of the breed in calving ease and birth weight EPD. NHC

BA50 BLACK POLLED BULL

Lot 46 | **TAU MR. OUTRIGHT 53D**

★ Calved: 1/27/2016 ★ Tattoo: TAU 53D ★ Reg. #: AMGV1366199

Birth Weight: 70 **Adj. 205-day Wt: 751**

Connealy Consensus 7229

TAU OUTRIGHT 162A

TAU Gunnison 5151R

S A V Final Answer 0035

TAU MS. FINAL ANSWER 419B

TAU TAU Ms Revolution 2057Z

CED	BW	WW	YW	MK	TM	CEM	ST	YG	CW	REA	MB	FT	FPI
16	-1.2	78	122	29	66	9	8	-20	41	.81	.56	.03	93.38

TAU 53D- A true calving ease prospect here that is sired by TAU Outright 162A and out of an SAV Final Answer daughter. 53D hit the ground at 70 pounds and weaned off the cow at 751 pounds. Ranks in the top 25% of the breed in 11 EPD traits.

BA50 HOMOZYGOUS BLACK POLLED BULL

Lot 47 | **TAU MR. FOCUS 22Z 44D ET**

★ Calved: 1/25/2016 ★ Tattoo: TAU 44D ★ Reg. #: AMGV1357917

Birth Weight: 80 **Adj. 205-day Wt: 702**

Mytty In Focus

TAU TAU MR IN FOCUS 22Z

TAU Ms Gunnison 028X

TAU Gunnison 106R

TAU MISS GUNNISON 106R 8101U

TAU Ms Freedom 425P

CED	BW	WW	YW	MK	TM	CEM	ST	YG	CW	REA	MB	FT	FPI
15	0	67	100	20	54	10	2	-46	29	.60	.52	-.01	83.57

TAU 44D- An attractive son of TAU Mr. In Focus 22Z out of our great donor TAU Ms. Gunnison 8101U. 44D is powerful built, eye appealing and offers a 702 pound weaning weight. NHF

BA63 HOMOZYGOUS BLACK POLLED BULL

Lot 49 | **TAU MR. GUNNISON 72D**

★ Calved: 2/3/2016 ★ Tattoo: TAU 72D ★ Reg. #: AMGV1366201

Birth Weight: 80 **Adj. 205-day Wt: 698**

VRT RUP Lazy Tv Hotfudge J357

GMCC RUPPLE GUNNISON N31

RUP Ruppel 919L

TC Gridiron 782

TAU MS. GRID IRON 782 4051B

TAU Ms Sleepy 204P 0208X

CED	BW	WW	YW	MK	TM	CEM	ST	YG	CW	REA	MB	FT	FPI
13	0.9	60	84	26	55	8	4	-40	21	.68	.11	-.03	67.85

TAU 72D- A son of the always popular Gunnison bull, and a powerful Gridiron daughter. 72D is eye appealing, stout hipped and wide made. Homozygous Black

BA63 HOMOZYGOUS BLACK POLLED BULL

Lot 50 **TAU MR AFFLUENT 58D ET**

★ Calved: 1/29/2016 ★ Tattoo: TAU 58D ★ Reg. #: AMGV1356292

Birth Weight: 83 **Adj. 205-day Wt: 702**

Vision Prosperity 2324

TAU AFFLUENT 225B

TAU Ms Gunnison 028X

GMCC Ruppel Gunnison N31

TAU MS GUNNISON 7211T ET

TAU Ms Dr P Of 516E 716G

CED	BW	WW	YW	MK	TM	CEM	ST	YG	CW	REA	MB	FT	FPI
11	1.9	70	103	30	64	7	5	-.40	34	.84	.35	-.03	78.87

TAU 58D- A high performing powerfully constructed son of TAU Affluent 225D and backed by our popular donor TAU Ms. Gunnison 7211T. 58D is a larger framed bull that is long bodied, and wide based. He has a lot of cow power in his pedigree. Homozygous Black



Lot 50

BA50 HOMOZYGOUS BLACK POLLED BULL

Lot 51 **TAU MR. CONSENSUS 77D ET**

★ Calved: 2/3/2016 ★ Tattoo: TAU 77D ★ Reg. #: AMGV1357930

Birth Weight: 83 **Adj. 205-day Wt: 591**

Connealy Consensus

CONNELY CONSENSUS 7229

Blue Lilly Of Conanga 16

GMCC Ruppel Gunnison N31

TAU GUNNISON 5151R

TAU Miss Bennets Bonus 230M

CED	BW	WW	YW	MK	TM	CEM	ST	YG	CW	REA	MB	FT	FPI
14	0.7	65	100	26	58	7	6	-.09	30	.83	.65	-.04	83.80

TAU 77D- A full brother to TAU Outright 162A. 77D is sired by Connealy Consensus and out of Tau Gunnison 5151R. 77D is a moderate framed herdsire prospect that is powerfully constructed and thick ended. Homozygous Black

BA38 BLACK POLLED BULL

Lot 52 **TAU MR UNANIMOUS 82D**

★ Calved: 2/4/2016 ★ Tattoo: TAU 82D ★ Reg. #: AMGV1351628

Birth Weight: 84 **Adj. 205-day Wt: 719**

Connealy Consensus 7229

TAU UNANIMOUS 11B ET

TAU Miss Rodeo Drive 321N

S S Traveler T510 2T22

TAU MISS TRAVELER 2T22 701T

TAU Sleepy 5234R

CED	BW	WW	YW	MK	TM	CEM	ST	YG	CW	REA	MB	FT	FPI
11	0.5	69	108	27	62	8	2	-.23	35	.59	.48	.01	82.58

TAU 82D- A maternal brother to our 2013 high selling bull, 82D is sired by TAU Unanimous 11B. 82D is long bodied, wide constructed and expressive hipped. He offers a balanced set of EPD's, and weaned off his powerful dam at 719 pounds.

BA63 HOMOZYGOUS BLACK POLLED BULL

Lot 53 **TAU MR AFFLUENT 52D ET**

★ Calved: 1/27/2016 ★ Tattoo: TAU 52D ★ Reg. #: AMGV1356291

Birth Weight: 82 **Adj. 205-day Wt: 759**

Vision Prosperity 2324

TAU AFFLUENT 225B

TAU Ms Gunnison 028X

GMCC Ruppel Gunnison N31

TAU MS GUNNISON 7211T ET

TAU Ms Dr P Of 516E 716G

CED	BW	WW	YW	MK	TM	CEM	ST	YG	CW	REA	MB	FT	FPI
11	1.9	70	103	30	64	7	5	-.40	34	.84	.35	-.03	78.87

TAU 52D- Here is a stout made son of our A.I. sire TAU Affluent 225D and our donor cow TAU Ms. Gunnison 7211T. 52D is big hipped, wide topped, and massive at the ground. He hit the scales at weaning at 759 pounds. Homozygous Black



Lot 53

BA38 HOMOZYGOUS BLACK POLLED BULL

Lot 54 **TAU MR GOODNIGHT 85D**

★ Calved: 2/4/2016 ★ Tattoo: TAU 85D ★ Reg. #: AMGV1351631

Birth Weight: 76 **Adj. 205-day Wt: 694**

CTR Good Night 4743P

CTR GOOD NIGHT 715T

CTR Poll Star 5160E

S A V Harvester 0338

TAU MS HARVESTER 4030B

TAU Gunnison 9129W

CED	BW	WW	YW	MK	TM	CEM	ST	YG	CW	REA	MB	FT	FPI
10	-0.2	66	98	20	53	6	4	-.20	28	.30	.20	.00	72.82

TAU 85D- A Soggy middled son of Good Night and out of a stout made Harvester first calf heifer. 85D is a low birth weight bull that is high performing, big bodied and sound structured. Homozygous Black

BA50 HOMOZYGOUS BLACK POLLED BULL

Lot 55 **TAU MR WINDY 078 91D**

★ Calved: 2/5/2016 ★ Tattoo: TAU 91D ★ Reg. #: AMGV1353045

Birth Weight: 85 **Adj. 205-day Wt: 743**

H A R B Windy 702 JH

APEX WINDY 078

Apexette Lucy 6037

HYEK Black Impact 3960N

TAU MS BLACK IMPACT 152Y

TAU Miss Freedom 4172P

CED	BW	WW	YW	MK	TM	CEM	ST	YG	CW	REA	MB	FT	FPI
5	1.1	78	110	28	64	-2	2	-.04	37	.39	.24	-.01	75.21

TAU 91D- A high performing son of Apex Windy 078 out of a powerful HYEK Black Impact female. 91D is a larger framed bull that is long bodied, and massive throughout. He offers a 743 pound weaning weight which gives him a ratio of 118. Homozygous Black

BA38 BLACK POLLED BULL

Lot 56 **TAU MR IN FOCUS 22Z 64D**

★ Calved: 1/31/2016 ★ Tattoo: TAU 64D ★ Reg. #: AMGV1350711

Birth Weight: 80 **Adj. 205-day Wt: 720**

Mytty In Focus

TAU TAU MR IN FOCUS 22Z

TAU Ms Gunnison 028X

VRT Lazy Tv Sam U451

TAU MS LAZY SAM 459B

TAU TAU Ms Final Answer 224Z

CED	BW	WW	YW	MK	TM	CEM	ST	YG	CW	REA	MB	FT	FPI
19	-1.9	70	107	31	66	11	8	-.30	30	.70	.70	.00	94.15

TAU 64D- A low birthweight son of TAU Mr. In Focus 22Z out of a great first calf Sam daughter. 64D is a super stout bull that is backed by a great set of calving ease, growth and carcass traits. NHF

**Lot 56**

BA38 HOMOZYGOUS BLACK POLLED BULL

Lot 57 **TAU MR CONSENSUS 95D**

★ Calved: 2/6/2016 ★ Tattoo: TAU 95D ★ Reg. #: AMGV1353051

Birth Weight: 84 **Adj. 205-day Wt: 699**

Connealy Consensus

CONNEALY CONSENSUS 7229

Blue Lilly Of Conanga 16

TAU Gunnison 106R

TAU MISS GUNNISON 106R 8101U

TAU Ms Freedom 425P

CED	BW	WW	YW	MK	TM	CEM	ST	YG	CW	REA	MB	FT	FPI
12	-0.1	67	103	18	51	6	1	-.10	28	.60	.70	.10	85.90

TAU 95D- A natural son of our donor TAU Ms. Gunnison 8101U that is sired by Connealy Consensus 7229. 95D is attractive in his build, sound structured and thick. Homozygous Black

BA63 HOMOZYGOUS BLACK POLLED BULL

Lot 58 **TAU MR. TOP GUN 106D**

★ Calved: 2/8/2016 ★ Tattoo: TAU 106D ★ Reg. #: AMGV1366066

Birth Weight: 86 **Adj. 205-day Wt: 720**

TAU Mr Grid Topper 43T

TAU TOP GUN 292Y

TAU Ms 4153P

GMCC Ruppel Gunnison N31

TAU TAU MS GUNNISON 212Z

TAU Ms Advance 0189X

CED	BW	WW	YW	MK	TM	CEM	ST	YG	CW	REA	MB	FT	FPI
10	1.2	78	101	16	54	7	4	-.37	31	.66	.15	-.04	76.82

TAU 106D- A massive son of TAU Top Gun 292Y and backed by a good Gunnison daughter. 106D is extremely stout hipped, wide topped and massive at the ground. He weaned off his dam at 720 pounds which earned him a ratio of 109. Homozygous Black

BA63 HOMOZYGOUS BLACK POLLED BULL

Lot 59 **TAU MR GUNNISON 330Y 84D**

★ Calved: 2/4/2016 ★ Tattoo: TAU 84D ★ Reg. #: AMGV1351629

Birth Weight: 89 **Adj. 205-day Wt: 735**

TAU Gunnison 106R

TAU MR GUNNISON 106R 330Y

TAU Ms 1407 546R

TAU Mr Gunnison 106R 230U

TAU GUNNISON 106R 230U 1017Y

TAU Ms Night Moves 8160U

CED	BW	WW	YW	MK	TM	CEM	ST	YG	CW	REA	MB	FT	FPI
9	1.7	72	100	19	55	7	0	-.17	32	.58	.23	-.03	73.99

TAU 84D- Big and stout son of our herd sire TAU 330Y and backed by a good Gunnison daughter. He is as powerful as they come, wide topped and expressively muscled. Homozygous Black

**Lot 59**

BA38 HOMOZYGOUS BLACK POLLED BULL

Lot 60 **TAU MR. TOP GUN 103D ET**

★ Calved: 2/8/2016 ★ Tattoo: TAU 103D ★ Reg. #: AMGV1365510

Birth Weight: 80 **Adj. 205-day Wt: 640**

TAU Mr Grid Topper 43T

TAU TOP GUN 292Y

TAU MS 4153P

TC Gridiron 782

TAU MISS GRIDIRON 131Y

TAU Miss Gunnison 106R 8101U

CED	BW	WW	YW	MK	TM	CEM	ST	YG	CW	REA	MB	FT	FPI
10	1.2	72	104	9	45	7	1	-.50	31	.74	.42	-.01	80.44

TAU 103D- Son of TAU Top Gun 292Y out of our new donor TAU Ms. Gridiron 131Y. 103D has the look, depth of body and muscle shape we would expect from this mating. Homozygous Black

BA50 HOMOZYGOUS BLACK POLLED BULL

Lot 61 **TAU MR. AFFLUENT 108D**

★ Calved: 2/9/2016 ★ Tattoo: TAU 108D ★ Reg. #: AMGV1360169

Birth Weight: 75 **Adj. 205-day Wt: 651**

Vision Prosperity 2324

TAU AFFLUENT 225B

TAU Ms Gunnison 028X

GMCC Ruppel Gunnison N31

TAU TAU MS GUNNISON 2075Z

TAU Ms 43T 037X

CED	BW	WW	YW	MK	TM	CEM	ST	YG	CW	REA	MB	FT	FPI
13	0.4	69	104	25	60	8	5	-.37	33	.88	.46	-.01	83.27

TAU 108D- A son of our A.I. sire TAU Affluent 225B out of a really good Gunnison daughter. 108D is powerfully constructed and he is backed by a solid set of growth and carcass EPD's. Homozygous Black

BA50 HOMOZYGOUS BLACK POLLED BULL

Lot 62 **TAU MR RESOURCE 102D**

★ Calved: 2/8/2016 ★ Tattoo: TAU 102D ★ Reg. #: AMGV1353060
Birth Weight: 80 Adj. 205-day Wt: 724
 Rito 707 Of Ideal 3407 7075
S A V RESOURCE 1441
 S A V Blackcap May 4136
 BABR Tsunami 447P
TAU MISS TSUNAMI 739T
 TAU Miss Beretta 457P ET

CED	BW	WW	YW	MK	TM	CEM	ST	YG	CW	REA	MB	FT	FPI
7	0.2	74	115	34	69	2	2	-.09	39	.92	.14	.04	75.10

TAU 102D- A moderate framed son of SAV Resource and out of a great BABR Tsunami daughter. 102D is soggy middled, expressive hiped, and wide made. Growth and carcass traits rank in the top 15% of the breed. Homozygous Black



Lot 62

BA38 HOMOZYGOUS BLACK POLLED BULL

Lot 65 **TAU MR CONSENSUS 115D**

★ Calved: 2/9/2016 ★ Tattoo: TAU 115D ★ Reg. #: AMGV1353096
Birth Weight: 82 Adj. 205-day Wt: 644
 Connealy Consensus
CONNELY CONSENSUS 7229
 Blue Lilly Of Conanga 16
 GMCC Ruppel Gunnison N31
TAU TAU MS GUNNISON 211Z
 TAU Ms Ole's Oscar 0129X

CED	BW	WW	YW	MK	TM	CEM	ST	YG	CW	REA	MB	FT	FPI
15	-1.8	66	99	27	59	7	4	.03	26	.58	.75	.06	88.91

TAU 115D- Here is a stout made son of the popular Connealy Consensus 7229 and out of a great Gunnison daughter that produced a \$14,000 high seller in 2015. 115D isn't a slouch either as he exhibits an expressive top and hip with plenty of depth of body. Homozygous Black

BA50 HOMOZYGOUS BLACK POLLED BULL

Lot 67 **TAU MR TOP GUN 117D**

★ Calved: 2/10/2016 ★ Tattoo: TAU 117D ★ Reg. #: AMGV1353101
Birth Weight: 92 Adj. 205-day Wt: 684
 TAU Mr Grid Topper 43T
TAU TOP GUN 292Y
 TAU Ms 4153P
 VRT RUP Lazy Tv Hotfudge J357
TAU MS FUDGE DELIGHT 9147W
 TAU Ms New Design 878 254

CED	BW	WW	YW	MK	TM	CEM	ST	YG	CW	REA	MB	FT	FPI
8	2	77	111	16	54	5	3	-.30	36	.60	.20	.00	76.16

TAU 117D- A super stout son of TAU Top Gun 292Y out of a spectacular Hot Fudge daughter, 117D is thick ended, wide topped and offers a powerful set of growth and carcass traits. Homozygous Black

BA50 BLACK POLLED BULL

Lot 63 **TAU MR RESOURCE 110D**

★ Calved: 2/9/2016 ★ Tattoo: TAU 110D ★ Reg. #: AMGV1353091
Birth Weight: 84 Adj. 205-day Wt: 669
 Rito 707 Of Ideal 3407 7075
S A V RESOURCE 1441
 S A V Blackcap May 4136
 GMCC Ruppel Gunnison N31
TAU MS KAISHA 994W ET
 TAU Ms Sleepy 920J

CED	BW	WW	YW	MK	TM	CEM	ST	YG	CW	REA	MB	FT	FPI
9	1.2	70	122	35	72	3	4	-.12	44	1.03	.21	.03	78.05

TAU 110D- Another son of SAV Resource here that goes back to our great donor TAU 920J. 110D is long bodied thick ended, and backed by an impressive set of EPD's ranking in the top 25% of the breed in Weaning Weight, Yearling Weight, Milk, Total Maternal, Carcass Weight and Ribeye Area.

BA50 BLACK POLLED BULL

Lot 64 **TAU MR. PROSPERITY 114D**

★ Calved: 2/9/2016 ★ Tattoo: TAU 114D ★ Reg. #: AMGV1366200
Birth Weight: 78 Adj. 205-day Wt: 727
 S A V Prosperity 9131
VISION PROSPERITY 2324
 Top Line Lassie 0849
 TAU Mr Hy-Per Active 60W ET
TAU MS. HYPER ACTIVE 2085Z
 TAU Ms Hot Fudge 9133W

CED	BW	WW	YW	MK	TM	CEM	ST	YG	CW	REA	MB	FT	FPI
10	1.1	70	104	33	66	7	1	-.24	34	.82	.54	-.03	83.75

TAU 114D- A super stout son of our herd sire Vision Prosperity 2324. 114D is expressive down his top and out of his hip. 114D's EPD profile is balanced with weaning weight, carcass weight, ribeye area, and marbling ranking in the top 25% of the breed.

BA38 BLACK POLLED BULL

Lot 66 **TAU MR UNANIMOUS 116D**

★ Calved: 2/9/2016 ★ Tattoo: TAU 116D ★ Reg. #: AMGV1353097
Birth Weight: 80 Adj. 205-day Wt: 785
 Connealy Consensus 7229
TAU UNANIMOUS 11B ET
 TAU Miss Rodeo Drive 321N
 TAU Mr Krugerrand 70M 130P
TAU MS KRUGERRAND 0142X
 TAU Miss Sleepy 2103W

CED	BW	WW	YW	MK	TM	CEM	ST	YG	CW	REA	MB	FT	FPI
8	0.1	68	105	29	63	7	2	-.26	33	.42	.41	-.03	80.03

TAU 116D- Here is a son of TAU Unanimous 11B backed by a powerful Krugerrand daughter that has been a dam of merit the last two years. 116D is a high performing bull that offers a ton of length and muscle shape. Don't overlook the fact that he weaned off the cow at 785 pounds, and ratioed at 115.

BA38 HOMOZYGOUS BLACK POLLED BULL

Lot 68 **TAU MR. OUTRIGHT 88D**

★ Calved: 2/5/2016 ★ Tattoo: TAU 88D ★ Reg. #: AMGV1370024
Birth Weight: 78 Adj. 205-day Wt: 721
 Connealy Consensus 7229
TAU OUTRIGHT 162A
 TAU Gunnison 5151R
 TAU TAU Mr In Focus 22Z
TAU MS. IN FOCUS 22Z 485B
 TAU Ms. Freedom 213Z

CED	BW	WW	YW	MK	TM	CEM	ST	YG	CW	REA	MB	FT	FPI
16	0.4	66	111	23	56	9	6	-.34	39	.66	.61	.04	85.95

TAU 88D- A moderate framed son of TAU Outright 162A, out of an impressive TAU Mr. In Focus 22Z daughter. 88D is easy fleshing, bold ribbed and thick ended. He sports a 78 pound birth weight and a 721 pound weaning weight. Homozygous Black

BA38 HOMOZYGOUS BLACK POLLED BULL

Lot 69 | **TAU MR WINDY 078 120D**

★ Calved: 2/10/2016 ★ Tattoo: TAU 120D ★ Reg. #: AMGV1353103

Birth Weight: 80 **Adj. 205-day Wt: 687**

H A R B Windy 702 JH

APEX WINDY 078

Apexette Lucy 6037

SLC Freedom 178F ET

TAU MS JANELLE 108Y

TAU Ms Gunnison 205R 9187W

CED	BW	WW	YW	MK	TM	CEM	ST	YG	CW	REA	MB	FT	FPI
6	0.4	68	104	23	57	0	2	-.04	32	.38	.23	-.01	72.67

TAU 120D- A powerful son of APEX Windy 078 backed by an easy fleshing Freedom daughter. 120D offers a lot of growth and length in an attractive and sound structured package with a balanced genetic profile. Homozygous Black



Lot 69

BA63 HOMOZYGOUS BLACK POLLED BULL

Lot 70 | **TAU MR. LEVERAGE 134D**

★ Calved: 2/11/2016 ★ Tattoo: TAU 134D ★ Reg. #: AMGV1366123

Birth Weight: 87 **Adj. 205-day Wt: 678**

VRT Lazy Tv Sam U451

CCRO CAROLINA LEVERAGE 3214A

CCRO Belle Of The Ball 1309Y

S A V Harvester 0338

TAU MS HARVESTER 4045B

TAU Ms Gunnison 5100R

CED	BW	WW	YW	MK	TM	CEM	ST	YG	CW	REA	MB	FT	FPI
6	2	79	120	34	73	5	5	-.27	43	.67	.14	-.01	77.46

TAU 134D- A powerfully built son of Carolina Leverage out of a SAV Harvester daughter. 134D massive at the ground, and that lays the foundation for him to be expressively muscled and wide based. Homozygous Black

BA38 HOMOZYGOUS BLACK POLLED BULL

Lot 71 | **TAU MR FINAL COUNTDOWN 129D**

★ Calved: 2/11/2016 ★ Tattoo: TAU 129D ★ Reg. #: AMGV1353742

Birth Weight: 80 **Adj. 205-day Wt: 792**

S A V Final Answer 0035

TAU FINALCOUNTDOWN 59Y

TAU Ms Gunnison 7211T ET

SITZ Alliance 6595

TAU MS ALLIANCE 571R

TAU Miss Freedom 1197L

CED	BW	WW	YW	MK	TM	CEM	ST	YG	CW	REA	MB	FT	FPI
12	0.6	80	109	22	58	8	5	-.10	34	.40	.40	.00	81.10

TAU 129D- A larger framed son of TAU Final Countdown 59Y, 129D offers a ton of growth and extension. If you are looking to sell calves at weaning, this is herdsire for you. He weaned off his 11 year old dam at 792 pounds which earned him a ratio of 117. Homozygous Black

BA50 HOMOZYGOUS BLACK POLLED BULL

Lot 72 | **TAU MR GUNNISON 330Y 137D**

★ Calved: 2/12/2016 ★ Tattoo: TAU 137D ★ Reg. #: AMGV1353747

Birth Weight: 78 **Adj. 205-day Wt: 658**

TAU Gunnison 106R

TAU MR GUNNISON 106R 330Y

TAU Ms 1407 546R

Hyline Right Time 338

TAU MISS HYLINE 856U

TAU Miss Freedom 190L

CED	BW	WW	YW	MK	TM	CEM	ST	YG	CW	REA	MB	FT	FPI
10	1.4	60	92	22	52	7	2	-.17	27	.50	.32	-.03	70.82

TAU 137D- Here is another son of our herd bull TAU 330Y and out of an easy fleshing Hyline Right Time daughter. 137D is level built and powerful hiped. Homozygous Black



Lot 74

BA38 HOMOZYGOUS BLACK POLLED BULL

Lot 73 | **TAU MR. TOP GUN 136D ET**

★ Calved: 2/12/2016 ★ Tattoo: TAU 136D ★ Reg. #: AMGV1365539

Birth Weight: 81 **Adj. 205-day Wt: 702**

TAU Mr Grid Topper 43T

TAU TOP GUN 292Y

TAU Ms 4153P

TC Gridiron 782

TAU MISS GRIDIRON 131Y

TAU Miss Gunnison 106R 8101U

CED	BW	WW	YW	MK	TM	CEM	ST	YG	CW	REA	MB	FT	FPI
10	0.4	75	104	9	45	7	1	-.50	31	.74	.42	-.01	82.90

TAU 136D- A son of TAU Top Gun 292Y out of our up and coming donor cow Ms. Gridiron 131Y. 136D is wide made, level built and attractive from the profile. Homozygous Black

BA63 HOMOZYGOUS BLACK POLLED BULL

Lot 74 | **TAU MR TOP GUN 133D**

★ Calved: 2/11/2016 ★ Tattoo: TAU 133D ★ Reg. #: AMGV1353745

Birth Weight: 83 **Adj. 205-day Wt: 663**

TAU Mr Grid Topper 43T

TAU TOP GUN 292Y

TAU Ms 4153P

GMCC Ruppel Gunnison N31

TAU MS GUNNISON 028X

TAU Ms Crossover 824U

CED	BW	WW	YW	MK	TM	CEM	ST	YG	CW	REA	MB	FT	FPI
12	1.5	74	110	20	60	8	5	-.60	33	1.00	.40	.00	85.64

TAU 133D- A real unique herd sire prospect here. 133D is sired by TAU Top Gun 292Y and out of a great Gunnison daughter. 133D is moderate framed, deep bodied and stout hiped. He has the look, genetic profile and pedigree to be difference maker in the breed. Homozygous Black

BA50 HOMOZYGOUS BLACK POLLED BULL

Lot 75 **TAU MR. FOCUS 22Z 159D ET**

★ Calved: 2/14/2016 ★ Tattoo: TAU 159D ★ Reg. #: AMGV1360186

Birth Weight: 78 Adj. 205-day Wt: 717

Mytty In Focus

TAU TAU MR IN FOCUS 22Z

TAU Ms Gunnison 028X

TAU Gunnison 106R

TAU MISS GUNNISON 106R 8101U

TAU Ms Freedom 425P

CED	BW	WW	YW	MK	TM	CEM	ST	YG	CW	REA	MB	FT	FPI
15	0.8	66	100	20	54	10	2	-46	29	.60	.52	-.01	82.61

TAU 159D- An attractive son of TAU Mr. In Focus 22Z and out of our donor TAU Ms. Gunnison 8101U. 159D is a level built, sound structured and deep bodied herd sire prospect. Homozygous Black by birth. NHF

BA38 HOMOZYGOUS BLACK POLLED BULL

Lot 76 **TAU MR FINAL COUNTDOWN 143D**

★ Calved: 2/12/2016 ★ Tattoo: TAU 143D ★ Reg. #: AMGV1353758

Birth Weight: 90 Adj. 205-day Wt: 752

S A V Final Answer 0035

TAU FINALCOUNTDOWN 59Y

TAU Ms Gunnison 7211T ET

SDCC Virginian 318T

TAU MS VIRGINIAN 318T 059X

TAU Miss Gunnison 742T

CED	BW	WW	YW	MK	TM	CEM	ST	YG	CW	REA	MB	FT	FPI
13	1.1	78	114	22	59	6	7	-20	37	.60	.50	.00	84.99

TAU 143D- A son of TAU Final Countdown 59Y that exhibits a ton of growth and performance. 143D is a larger framed bull that is long bodied and stout hipped. He hit the scales at 752 pounds at weaning and that helped him to earn a ratio of 110 against his contemporaries. Homozygous Black

BA38 HOMOZYGOUS BLACK POLLED BULL

Lot 78 **TAU MR CONSENSUS 150D**

★ Calved: 2/13/2016 ★ Tattoo: TAU 150D ★ Reg. #: AMGV1353765

Birth Weight: 88 Adj. 205-day Wt: 665

Connealy Consensus

CONNELY CONSENSUS 7229

Blue Lilly Of Conanga 16

XXB Big N' Rich 911P ET

TAU MS BIG N'RICH 7194T ET

TAU Ms Dr P Of 516E 716G

CED	BW	WW	YW	MK	TM	CEM	ST	YG	CW	REA	MB	FT	FPI
10	1	69	104	26	61	6	4	-.01	33	.56	.56	.03	82.31

TAU 150D- A son of the popular Angus sire Connealy Consensus 7229 that goes back to the TAU 716G cow family. 150D brings a ton of power and mass to the table in a deep bodied, big footed package. Homozygous Black

BA25 HOMOZYGOUS BLACK POLLED BULL

Lot 80 **TAU MR TOP GUN 152D**

★ Calved: 2/13/2016 ★ Tattoo: TAU 152D ★ Reg. #: AMGV1353768

Birth Weight: 87 Adj. 205-day Wt: 713

TAU Mr Grid Topper 43T

TAU TOP GUN 292Y

TAU Ms 4153P

S A V Final Answer 0035

TAU MS FINAL ANSWER 104Y

9223W

CED	BW	WW	YW	MK	TM	CEM	ST	YG	CW	REA	MB	FT	FPI
11	0.3	80	111	12	51	7	4	-.40	33	.70	.30	.00	81.66

TAU 152D- A good son of TAU Top Gun 292Y out of an impressive Final Answer daughter. 152D has plenty of length and extension and couples that with a lot of muscle shape and mass. Growth and carcass traits ranking in the top 20% of the breed. Homozygous Black



Lot 75

BA38 RED POLLED BULL

Lot 77 **TAU MR. CONQUEST 146D**

★ Calved: 2/13/2016 ★ Tattoo: TAU 146D ★ Reg. #: AMGV1366198

Birth Weight: 79 Adj. 205-day Wt: 704

WF Beckton Julian GG B571

HXC HXC CONQUEST 4405P

HXC HXC Ellie May MA638

TAU Mr Gunnison 106R 230U

TAU MS GUNNISON 230U 4165B

TAU Ms. Grid Topper 43T 1141Y

CED	BW	WW	YW	MK	TM	CEM	ST	YG	CW	REA	MB	FT	FPI
15	-0.8	69	94	23	56	7	-3	-.09	22	.30	.33	-.01	79.31

TAU 146D- A red calving ease son of HXC Conquest. 146D is attractive in his build, bold ribbed and thick ended. When you throw in the fact that he hit the ground at 79 pounds and weaned off the cow at 704, there is no doubt he will make a high growth calving ease herdsire prospect.

BA25 HOMOZYGOUS BLACK POLLED BULL

Lot 79 **TAU MR RESOURCE 151D**

★ Calved: 2/13/2016 ★ Tattoo: TAU 151D ★ Reg. #: AMGV1353766

Birth Weight: 83 Adj. 205-day Wt: 628

Rito 707 Of Ideal 3407 7075

S A V RESOURCE 1441

S A V Blackcap May 4136

GMCC Ruppel Gunnison N31

TAU MS GUNNISON 920W

CED	BW	WW	YW	MK	TM	CEM	ST	YG	CW	REA	MB	FT	FPI
10	0.1	62	113	31	64	1	2	-.23	38	1.02	.14	-.01	73.98

TAU 151D- A massive son of SAV Resource out of a wonderful Gunnison daughter. 151D is a well rounded bull that shows a lot of growth, carcass, and maternal quality. If you are looking to sell at weaning, retain replacement females, or feed out your calves 151D should be able to do it all. Homozygous Black

BA38 HOMOZYGOUS BLACK POLLED BULL

Lot 81 **TAU MR. TOP GUN 154D ET**

★ Calved: 2/14/2016 ★ Tattoo: TAU 154D ★ Reg. #: AMGV1365541

Birth Weight: 88 Adj. 205-day Wt: 693

TAU Mr Grid Topper 43T

TAU TOP GUN 292Y

TAU Ms 4153P

TC Gridiron 782

TAU MISS GRIDIRON 131Y

TAU Miss Gunnison 106R 8101U

CED	BW	WW	YW	MK	TM	CEM	ST	YG	CW	REA	MB	FT	FPI
10	0.5	75	104	9	45	7	1	-.50	31	.74	.42	-.01	82.78

TAU 154D- An embryo calf by TAU Top Gun 292Y and TAU Ms. Gridiron 131Y here. 154D is moderate framed, easy fleshing and stout hipped. He possesses a ton of growth and carcass potential as well. Homozygous Black

BALANCERS

BA50 HOMOZYGOUS BLACK POLLED BULL

Lot 82 **TAU MR FINAL LEAD 156D**

★ Calved: 2/14/2016 ★ Tattoo: TAU 156D ★ Reg. #: AMGV1353772

Birth Weight: 81 **Adj. 205-day Wt: 698**

TAU Final Countdown 59Y

TAU FINAL LEAD 42A

TAU Miss Tsunami 743T

BT Crossover 758N

TAU MS CROSSOVER 879U

TAU Miss Z937 383N

CED	BW	WW	YW	MK	TM	CEM	ST	YG	CW	REA	MB	FT	FPI
12	0.2	69	104	26	61	9	5	-.30	31	.70	.40	.00	81.24

TAU 156D- A truly impressive son of TAU Final Lead 42A and backed by a four time dam of merit that the kids showed back in the day. 156D is as stout as they come and massive at the ground. Homozygous Black

BA50 HOMOZYGOUS BLACK POLLED BULL

Lot 84 **TAU MR. UNANIMOUS 160D**

★ Calved: 2/14/2016 ★ Tattoo: TAU 160D ★ Reg. #: AMGV1366070

Birth Weight: 80 **Adj. 205-day Wt: 695**

Connealy Consensus 7229

TAU UNANIMOUS 11B ET

TAU Miss Rodeo Drive 321N

GMCC Ruppel Gunnison N31

TAU TAU MISS GUNNISON 025X

TAU Miss Grid Topper 8120U

CED	BW	WW	YW	MK	TM	CEM	ST	YG	CW	REA	MB	FT	FPI
10	0.2	65	93	26	58	6	7	-.36	27	.66	.43	-.03	78.71

TAU 160D- Here is a son of TAU Unanimous 11B that is backed by an attractive Gunnison daughter. 160D is sound structured, soggy middled and long bodied. He sports a balanced set of EPD's as well. Homozygous Black

BA38 HOMOZYGOUS BLACK POLLED BULL

Lot 86 **TAU MR. TOP GUN 167D ET**

★ Calved: 2/15/2016 ★ Tattoo: TAU 167D ★ Reg. #: AMGV1365545

Birth Weight: 88 **Adj. 205-day Wt: 669**

TAU Mr Grid Topper 43T

TAU TOP GUN 292Y

TAU Ms 4153P

TC Gridiron 782

TAU MISS GRIDIRON 131Y

TAU Miss Gunnison 106R 8101U

CED	BW	WW	YW	MK	TM	CEM	ST	YG	CW	REA	MB	FT	FPI
10	0.5	72	104	9	45	7	1	-.50	31	.74	.42	-.01	81.28

TAU 167D- If you're looking for growth and carcass traits you'll definitely find it in this son of TAU Top Gun 292Y. 167D is long bodied, bold ribbed and thick ended. Don't overlook that fact that he is backed by a great cow family as well. Homozygous Black

BA63 HOMOZYGOUS BLACK POLLED BULL

Lot 87 **TAU MR OUT RIGHT 166D**

★ Calved: 2/15/2016 ★ Tattoo: TAU 166D ★ Reg. #: AMGV1353779

Birth Weight: 74 **Adj. 205-day Wt: 768**

Connealy Consensus 7229

TAU OUTRIGHT 162A

TAU Gunnison 5151R

VRT Lazy Tv Sam U451

TAU MS. SAMMY 4020B

DMRS The Factor 272Z

CED	BW	WW	YW	MK	TM	CEM	ST	YG	CW	REA	MB	FT	FPI
14	-0.4	74	111	30	65	8	7	-.30	36	.80	.40	.00	83.47

TAU 166D- A calving ease son of TAU Outright 162A out of a Lazy TV Sam daughter. 166D's pedigree is lined with calving ease and I would expect him to be the same. He hit the ground at 74 pounds and weaned off the cow at 768 pounds. EPD's read with plenty of calving ease and growth as well. Homozygous Black

BA38 HOMOZYGOUS BLACK POLLED BULL

Lot 83 **TAU MR. AFFLUENT 157D**

★ Calved: 2/14/2016 ★ Tattoo: TAU 157D ★ Reg. #: AMGV1366122

Birth Weight: 88 **Adj. 205-day Wt: 704**

Vision Prosperity 2324

TAU AFFLUENT 225B

TAU Ms Gunnison 028X

HYEK Black Impact 3960N

TAU MS. IMPACT 2028Z

TAU Ms BW 469P

CED	BW	WW	YW	MK	TM	CEM	ST	YG	CW	REA	MB	FT	FPI
11	0.4	69	101	27	60	3	3	-.39	30	.75	.45	.00	82.06

TAU 157D- A well balanced son of TAU Affluent 225B that goes back to HYEK Black Impact. 157D's advantages start at the ground. He is big footed, and wide based and this lays the foundation for him to be bold ribbed and wide topped. Homozygous Black

BA63 HOMOZYGOUS BLACK POLLED BULL

Lot 85 **TAU MR CAROLINA LEVERAGE 163D**

★ Calved: 2/14/2016 ★ Tattoo: TAU 163D ★ Reg. #: AMGV1353776

Birth Weight: 80 **Adj. 205-day Wt: 710**

VRT Lazy Tv Sam U451

CCRO CAROLINA LEVERAGE 3214A

CCRO Belle Of The Ball 1309Y

S A V Harvester 0338

TAU MS HARVESTER 4014B

TAU Ms Gunnison 052X

CED	BW	WW	YW	MK	TM	CEM	ST	YG	CW	REA	MB	FT	FPI
6	1.5	79	121	36	75	4	6	-.20	44	.70	.20	.00	79.24

TAU 163D- A high growth son of Carolina Leverage that weaned off his Harvester dam at 710 pounds. 163D is soggy middled, expressively muscled and offers a balanced genetic chart. Homozygous Black

**Lot 86**

BA50 HOMOZYGOUS BLACK POLLED BULL

Lot 88 **TAU MR WINDY 078 182D**

★ Calved: 2/19/2016 ★ Tattoo: TAU 182D ★ Reg. #: AMGV1353806

Birth Weight: 88 **Adj. 205-day Wt: 743**

H A R B Windy 702 JH

APEX WINDY 078

Apexette Lucy 6037

OGSG Master Onix 247M

TAU MS ONIX 6225S

TAU Black Jack 2107M

CED	BW	WW	YW	MK	TM	CEM	ST	YG	CW	REA	MB	FT	FPI
4	0.5	67	99	33	66	2	1	-.08	29	.34	.12	-.02	69.34

TAU 182D- A high growth son of APEX Windy 078 out of a solid 10 year old cow. 182D is a high growth bull that has the maternal quality to boot. He weaned off the cow at 743 pounds. Homozygous Black

BA38 HOMOZYGOUS BLACK POLLED BULL

Lot 89 **TAU MR. TOP GUN 179D ET**

★ Calved: 2/18/2016 ★ Tattoo: TAU 179D ★ Reg. #: AMGV1365548

Birth Weight: 92 Adj. 205-day Wt: 743

TAU Mr Grid Topper 43T

TAU TOP GUN 292Y

TAU Ms 4153P

TC Gridiron 782

TAU MISS GRIDIRON 131Y

TAU Miss Gunnison 106R 8101U

CED	BW	WW	YW	MK	TM	CEM	ST	YG	CW	REA	MB	FT	FPI
10	0.4	72	104	9	45	7	1	-.50	31	.74	.42	-.01	81.40

TAU 179D- A larger framed son of TAU Top Gun 292Y and out of our new donor dam TAU Ms. Grid Iron 131Y. 179D is level built, square hiped and big hiped. Weaned off the cow at 743 pounds. Homozygous Black



Lot 89

BA38 HOMOZYGOUS BLACK POLLED BULL

Lot 90 **TAU MR. TOP GUN 165D ET**

★ Calved: 2/14/2016 ★ Tattoo: TAU 165D ★ Reg. #: AMGV1365544

Birth Weight: 91 Adj. 205-day Wt: 725

TAU Mr Grid Topper 43T

TAU TOP GUN 292Y

TAU Ms 4153P

TC Gridiron 782

TAU MISS GRIDIRON 131Y

TAU Miss Gunnison 106R 8101U

CED	BW	WW	YW	MK	TM	CEM	ST	YG	CW	REA	MB	FT	FPI
10	0.3	71	104	9	45	7	1	-.50	31	.74	.42	-.01	81.02

TAU 165D- A moderate framed son of TAU Top Gun 292Y and out of our new donor TAU Ms. Gridiron 131Y. 165D has a great look with plenty of dimension and muscle shape from behind. He offers a 725 pound weaning weight and that growth shows on his genetic chart as well. Homozygous Black by birth



Lot 90

BA38 BLACK POLLED BULL

Lot 91 **TAU MR PROSPERITY 186D**

★ Calved: 2/19/2016 ★ Tattoo: TAU 186D ★ Reg. #: AMGV1353816

Birth Weight: 86 Adj. 205-day Wt: 763

S A V Prosperity 9131

VISION PROSPERITY 2324

Top Line Lassie 0849

WOAK Revolution 08T

TAU TAU MS REVOLUTION 265Z

TAU 3198N

CED	BW	WW	YW	MK	TM	CEM	ST	YG	CW	REA	MB	FT	FPI
8	0.7	70	102	33	66	6	2	-.21	32	.71	.60	-.03	83.38

TAU 186D- Here a powerful son of Vision Prosperity 2324 that is out of a good Revolution daughter. 186D has a stout build, balanced genetic chart, and he weaned off his dam a 763 pounds.

BA38 BLACK POLLED BULL

Lot 93 **TAU MR FINAL COUNTDOWN 198D**

★ Calved: 2/23/2016 ★ Tattoo: TAU 198D ★ Reg. #: AMGV1353830

Birth Weight: 87 Adj. 205-day Wt: 656

S A V Final Answer 0035

TAU FINALCOUNTDOWN 59Y

TAU Ms Gunnison 7211T ET

GMCC Ruppel Gunnison N31

TAU TAU MS GUNNISON 514Z

TAU Ms Fancy Pants 068X

CED	BW	WW	YW	MK	TM	CEM	ST	YG	CW	REA	MB	FT	FPI
15	0	67	98	24	57	8	7	-.30	26	.60	.40	.00	80.56

TAU 198D- A son of TAU Final Countdown 59Y and out of a square hiped Gunnison daughter. 198D has added frame and mass, with plenty of natural rib shape and body.

BA50 BLACK POLLED BULL

Lot 92 **TAU MR VICRAM 197D**

★ Calved: 2/23/2016 ★ Tattoo: TAU 197D ★ Reg. #: AMGV1353829

Birth Weight: 89 Adj. 205-day Wt: 710

STON Xterminator 7X

TJB VICKRAM 342A-ET

TJB Velvet 912U-ET ET

MCBR C-BAR Contour 107X

HRNK MS CONTOUR 3107A

TAU Gunnison 106R 230U 1078Y

CED	BW	WW	YW	MK	TM	CEM	ST	YG	CW	REA	MB	FT	FPI
9	2	73	115	24	61	6	1	-.20	38	.40	.10	.00	73.05

TAU 197D- A high growth son of our new herd sire TJB Vickram 342A out of a powerful Contour daughter. 197D is a larger framed bull that offers a ton of length and extension in a sound structured package. He also hit the scales at 710 pounds at weaning.



Donor Dam 131Y

BALANCERS

BA50 BLACK POLLED BULL

Lot 94 **TAU MR. TOP GUN 185D**

★ Calved: 2/19/2016 ★ Tattoo: TAU 185D ★ Reg. #: AMGV1360187

Birth Weight: 85 **Adj. 205-day Wt: 770**

TAU Mr Grid Topper 43T

TAU TOP GUN 292Y

TAU Ms 4153P

HXC HXC Conquest 4405P

TAU MS. CONQUEST 183Y

TAU TG Red Nite 191L OF 551F

CED	BW	WW	YW	MK	TM	CEM	ST	YG	CW	REA	MB	FT	FPI
10	0.2	76	108	16	54	7	1	-.32	33	.48	.18	-.04	77.95

TAU 185D- An impressive son of TAU Top Gun 292Y backed by a really great red Conquest daughter. 185D is a framer bull that has plenty of length and depth of body. He is sound structured and offers a balanced genetic profile with a 770 pound weaning weight.

**Lot 94**

BA63 HOMOZYGOUS BLACK POLLED BULL

Lot 95 **TAU MR. FINAL LEAD 202D**

★ Calved: 2/24/2016 ★ Tattoo: TAU 202D ★ Reg. #: AMGV1366113

Birth Weight: 86 **Adj. 205-day Wt: 639**

TAU Final Countdown 59Y

TAU FINAL LEAD 42A

TAU Miss Tsunami 743T

TAU Mr Hy-Per Active 60W ET

TAU MS. HYPER ACTIVE 2131Z

TAU Ms Tuned In 084X

CED	BW	WW	YW	MK	TM	CEM	ST	YG	CW	REA	MB	FT	FPI
12	2.2	72	105	26	62	8	6	-.30	35	.55	.32	-.03	78.17

TAU 202D- Here is a son of TAU Final Lead 42A, that is what we would expect from his sire. 202D is wide topped, big hiped and stout footed. If you check his EPD's he reads with a lot of growth and carcass quality. Homozygous Black

BA63 HOMOZYGOUS BLACK POLLED BULL

Lot 96 **TAU MR. TOP GUN 204D**

★ Calved: 2/26/2016 ★ Tattoo: TAU 204D ★ Reg. #: AMGV1366069

Birth Weight: 81 **Adj. 205-day Wt: 726**

TAU Mr Grid Topper 43T

TAU TOP GUN 292Y

TAU Ms 4153P

JRI Top Grid 254T725

TAU MS TOP GRID 148Y

TAU Ms Junior 3303K 7149T

CED	BW	WW	YW	MK	TM	CEM	ST	YG	CW	REA	MB	FT	FPI
9	0.8	75	104	20	56	7	2	-.36	33	.59	.08	-.04	74.21

TAU 204D- A high performance son of TAU Top Gun 292Y that has a lot of growth, eye appeal and muscle shape. 204D is a larger framed bull that is long bodied. He weaned off his dam at 726 pounds. Homozygous Black

BA50 HOMOZYGOUS BLACK POLLED BULL

Lot 97 **TAU MR. TOTAL 214D**

★ Calved: 3/4/2016 ★ Tattoo: TAU 214D ★ Reg. #: AMGV1366202

Birth Weight: 82 **Adj. 205-day Wt: 735**

TC Total 410

DMRS MR TC TOTAL 048X

DMRS Rikki 52R

SDCG X-Factor 202X

TAU MS. X-FACTOR 2076Z

TAU Krugerrand 5175R

CED	BW	WW	YW	MK	TM	CEM	ST	YG	CW	REA	MB	FT	FPI
8	0.7	68	90	25	56	5	2	-.22	25	.42	.29	-.03	74.59

TAU 214D- A grandson of TC Total. 214D is younger bull that brings a lot of growth potential to the table. He is long spined, thick ended and sound structured. He weaned off the cow at 735 pounds. Homozygous Black

BA50 HOMOZYGOUS BLACK POLLED BULL

Lot 98 **TAU MR. TOTAL 223D**

★ Calved: 3/6/2016 ★ Tattoo: TAU 223D ★ Reg. #: AMGV1366112

Birth Weight: 90 **Adj. 205-day Wt: 780**

TC Total 410

DMRS MR TC TOTAL 048X

DMRS Rikki 52R

SDCG X-Factor 202X

TAU MS. X-FACTOR 2064Z

TAU Krugerrand 5158R

CED	BW	WW	YW	MK	TM	CEM	ST	YG	CW	REA	MB	FT	FPI
8	0.7	67	87	26	56	5	2	-.23	22	.43	.30	-.02	74.28

TAU 223D- Another high growth grandson of TC Total that offers some added frame. 223D is bold ribbed and big footed. He also weaned off his dam at 780 pounds earning him a ratio of 111. Homozygous Black

BA50 HOMOZYGOUS BLACK POLLED BULL

Lot 99 **TAU MR. FINAL LEAD 221D**

★ Calved: 3/7/2016 ★ Tattoo: TAU 221D ★ Reg. #: AMGV1363798

Birth Weight: 88 **Adj. 205-day Wt: 760**

TAU Final Countdown 59Y

TAU FINAL LEAD 42A

TAU Miss Tsunami 743T

TC Grid Topper 355

TAU MS GRID TOPPER 997W

TAU Miss Ty 492P

CED	BW	WW	YW	MK	TM	CEM	ST	YG	CW	REA	MB	FT	FPI
10	0.7	78	110	22	58	9	5	-.27	37	.51	.30	-.02	81.81

TAU 221D- A massive son of TAU Final Lead 42A out of a good 43T daughter. 221D's EPD's read with a ton of growth and carcass quality, and he proved it by weaning off his 7 year old dam at 760 pounds, ratioing at 112. Homozygous Black

BA50 RED POLLED BULL

Lot 100 **TAU MR. STUART 237D**

★ Calved: 3/9/2016 ★ Tattoo: TAU 237D ★ Reg. #: AMGV1363829

Birth Weight: 89 **Adj. 205-day Wt: 620**

TAU Mr Grid Topper 43T

TAU MR GRID TOPPER 43T 21B

TAU Ms Gunnison 106R 1031Y

S A V Final Answer 0035

TAU MS. FINAL ANSWER 170Y

TAU Ms Sleepy 204P 7173T

CED	BW	WW	YW	MK	TM	CEM	ST	YG	CW	REA	MB	FT	FPI
11	0.3	70	101	23	58	7	3	-.22	30	.61	.25	.01	76.49

TAU 237D- A red bull here that is sired by a son of TAU Mr. Grid Topper 43T, and out of a long bodied SAV Final Answer daughter. 237D is moderate framed, bold ribbed and powerful out of his hip. He also possesses a balanced genetic chart.



Reserve Division Female at Gelbvieh Junior Nationals

BA75 BLACK POLLED HEIFER

Lot 101 TAU MS GUNNISON N31 532C

★ Calved: 1/25/2015 ★ Tattoo: TAU 532C ★ Reg. #: AMGV1319631

Birth Weight: 80 Adj. 205-day Wt: 598

VRT RUP Lazy Tv Hotfudge J357

GMCC RUPPLE GUNNISON N31

RUP Ruppel 919L

CTR Good Night 715T

TAU MS GOODNIGHT 366A

TAU Miss Hyline 861U

CED	BW	WW	YW	MK	TM	CEM	ST	YG	CW	REA	MB	FT	FPI
14	1.4	66	90	26	58	9	7	-.30	25	.50	.00	.00	67.56

A.I.'ed ton EF Commando 1366 on 4/23/2016

BA75 RED POLLED HEIFER

Lot 102 TAU MS GRID TOPPER 43T 555C

★ Calved: 1/29/2015 ★ Tattoo: TAU 555C ★ Reg. #: AMGV1319654

Birth Weight: 80 Adj. 205-day Wt: 565

TC Grid Topper 355

TAU MR GRID TOPPER 43T

TAU Miss Ty 3130N

SGRI Honor Roll S232

TAU TAU MS HONOR ROLL 2012Z

TAU Ms Tsunami 988W

CED	BW	WW	YW	MK	TM	CEM	ST	YG	CW	REA	MB	FT	FPI
8	1.6	72	94	15	51	4	1	-.40	27	.70	.00	-.10	68.03

Bred by TAU Mr. Final Answer 259Y on 5/29/2016, then exposed to TAU Mr. Final Answer 259Y 5/24/2016-7/10/2016

BA75 BLACK POLLED HEIFER

Lot 103 TAU MS OUTRIGHT 162A 561C

★ Calved: 1/30/2015 ★ Tattoo: TAU 561C ★ Reg. #: AMGV1328489

Birth Weight: 78 Adj. 205-day Wt: 602

Connealy Consensus 7229

TAU OUTRIGHT 162A

TAU Gunnison 5151R

SLC Freedom 178F ET

TAU MISS FREEDOM 371N TWIN

TAU Ms Doctor Pepper 8108H

CED	BW	WW	YW	MK	TM	CEM	ST	YG	CW	REA	MB	FT	FPI
12	1	72	114	24	60	10	8	-.20	40	.70	.20	.00	76.48

Bred by TAU Mr. Final Answer 259Y on 5/24/2016, then exposed to TAU Mr. Final Answer 259Y 5/24/2016-7/10/2016

BA50 BLACK POLLED HEIFER

Lot 104 TAU MS GRID TOPPER 43T 541C

★ Calved: 1/26/2015 ★ Tattoo: TAU 541C ★ Reg. #: AMGV1319644

Birth Weight: 86 Adj. 205-day Wt: 637

TC Grid Topper 355

TAU MR GRID TOPPER 43T

TAU Miss Ty 3130N

GMCC Ruppel Gunnison N31

TAU TAU MS GUNNISON 231Z

TAU Ms El Captain 083X

CED	BW	WW	YW	MK	TM	CEM	ST	YG	CW	REA	MB	FT	FPI
11	1.6	71	102	14	49	7	3	-.40	32	.70	.20	.00	74.13

A.I.'ed to SLC Freedom 178F ET on 5/17/2016

BA50 BLACK POLLED HEIFER

Lot 105 TAU MS. GRID TOPPER 43T 543C

★ Calved: 1/27/2015 ★ Tattoo: TAU 543C ★ Reg. #: AMGV1369314

Birth Weight: 80 Adj. 205-day Wt: 540

TC Grid Topper 355

TAU MR GRID TOPPER 43T

TAU Miss Ty 3130N

HYEK Black Impact 3960N

TAU MS. IMPACT 2028Z

TAU Ms BW 469P

CED	BW	WW	YW	MK	TM	CEM	ST	YG	CW	REA	MB	FT	FPI
8	0.3	68	97	16	50	0	-1	-.41	28	.61	.23	-.02	74.16

A.I.'ed to JRI Multitool 706A22 on 5/15/2016

PC38 BLACK POLLED HEIFER

Lot 106 TAU MS IN FOCUS 22Z 545C

★ Calved: 1/28/2015 ★ Tattoo: TAU 545C ★ Reg. #: AMGV1319646

Birth Weight: 68 Adj. 205-day Wt: 644

MYTTY In Focus

TAU TAU MR IN FOCUS 22Z

TAU Ms Gunnison 028X

CTR Good Night 715T

TAU MS JAYLIN 3022A

TAU Ms Buster 8144U

CED	BW	WW	YW	MK	TM	CEM	ST	YG	CW	REA	MB	FT	FPI
17	-1	62	96	21	52	10	2	-.20	25	.30	.50	.00	81.00

Bred by TAU Mr. Final Answer 259Y on 5/24/2016, then exposed to TAU Mr. Final Answer 259Y 5/24/2016-7/10/2016

BA50 BLACK POLLED HEIFER

Lot 107 TAU MS FINAL ANSWER 546C

★ Calved: 1/28/2015 ★ Tattoo: TAU 546C ★ Reg. #: AMGV1319647

Birth Weight: 70 Adj. 205-day Wt: 619

SITZ Traveler 8180

S A V FINAL ANSWER 0035

S A V Emulous 8145

TAU Amherst 238Y

TAU MS AMHERST 3115A

TAU Ms Gunnison 547R

CED	BW	WW	YW	MK	TM	CEM	ST	YG	CW	REA	MB	FT	FPI
17	-1.3	71	102	25	61	11	9	-.03	28	.58	.32	.03	81.50

A.I.'ed to SLC Freedom 178F ET on 4/27/2016

BRED HEIFERS

All heifers exposed to TAU Mr. Final Answer 259Y from May 24th, 2016 to July 10th, 2016

BA38 BLACK POLLED HEIFER

Lot 108 | **TAU MS. OUTRIGHT 549C**

★ Calved: 1/29/2015 ★ Tattoo: TAU 549C ★ Reg. #: AMGV1323525

Birth Weight: 70 **Adj. 205-day Wt: 608**

Connealy Consensus 7229

TAU OUTRIGHT 162A

TAU Gunnison 5151R

CTR Good Night 715T

TAU MS SUPER NIGHT 3014A

TAU Ms Night Moves 8166U

CED	BW	WW	YW	MK	TM	CEM	ST	YG	CW	REA	MB	FT	FPI
13	0.5	77	123	19	57	8	6	-1.0	45	.60	.50	.00	86.93

A.I.'ed to SLC Freedom 178F ET on 5/18/2016

BA50 BLACK POLLED HEIFER

Lot 109 | **TAU MS IN FOCUS 551C**

★ Calved: 1/29/2015 ★ Tattoo: TAU 551C ★ Reg. #: AMGV1319650

Birth Weight: 65 **Adj. 205-day Wt: 611**

S A F Focus of E R

MYTTY IN FOCUS

MYTTY Countess 906

TAU Gunnison 106R

TAU MS. GUNNISON 106R 3087A

TAU Ms. Freedom 014X

CED	BW	WW	YW	MK	TM	CEM	ST	YG	CW	REA	MB	FT	FPI
16	-1.4	65	98	23	56	8	1	-0.6	26	.29	.44	-0.01	81.28

A.I.'ed to JRI Multitool 706A22 on 5/22/2016

BA63 BLACK POLLED HEIFER

Lot 110 | **TAU MS GRID TOPPER 43T 559C**

★ Calved: 1/30/2015 ★ Tattoo: TAU 559C ★ Reg. #: AMGV1319657

Birth Weight: 78 **Adj. 205-day Wt: 565**

TC Grid Topper 355

TAU MR GRID TOPPER 43T

TAU Miss Ty 3130N

DJS 99X

TAU TAU MS GUN SLINGER 2171Z

TAU Ms Rodeo Drive 211 6138S

CED	BW	WW	YW	MK	TM	CEM	ST	YG	CW	REA	MB	FT	FPI
7	1.6	65	88	14	46	6	3	-0.50	24	.60	.00	-0.10	64.66

A.I.'ed to SLC Freedom 178F ET on 5/17/2016

BA50 BLACK POLLED HEIFER

Lot 111 | **TAU MS IN FOCUS 560C**

★ Calved: 1/30/2015 ★ Tattoo: TAU 560C ★ Reg. #: AMGV1319658

Birth Weight: 70 **Adj. 205-day Wt: 553**

S A F Focus of E R

MYTTY IN FOCUS

MYTTY Countess 906

TAU MR Gunnison 106R 230U

TAU MS. GUNNISON 230U 3107A

TAU Ms Honor Roll 964W

CED	BW	WW	YW	MK	TM	CEM	ST	YG	CW	REA	MB	FT	FPI
15	-1	63	93	22	54	9	1	-1.0	24	.33	.47	-0.02	79.98

Bred by TAU Mr. Final Answer 259Y on 5/24/2016, then exposed to TAU Mr. Final Answer 259Y 5/24/2016-7/10/2016

BA38 BLACK POLLED HEIFER

Lot 112 | **TAU MS FINAL ANSWER 570C**

★ Calved: 2/1/2015 ★ Tattoo: TAU 570C ★ Reg. #: AMGV1319668

Birth Weight: 78 **Adj. 205-day Wt: 638**

SITZ Traveler 8180

S A V FINAL ANSWER 0035

S A V Emulous 8145

BABR Tsunami 447P

TAU MS TSUNAMI 3036A

TAU Ms Freedom 711T

CED	BW	WW	YW	MK	TM	CEM	ST	YG	CW	REA	MB	FT	FPI
14	-0.3	71	106	20	56	10	8	.03	32	.49	.34	.04	79.95

A.I.'ed to TAU Mr. In Focus 22Z on 5/17/2016

BA50 BLACK POLLED HEIFER

Lot 113 | **TAU MS IN FOCUS 22Z 571C**

★ Calved: 2/1/2015 ★ Tattoo: TAU 571C ★ Reg. #: AMGV1319669

Birth Weight: 75 **Adj. 205-day Wt: 598**

MYTTY In Focus

TAU TAU MR IN FOCUS 22Z

TAU Ms Gunnison 028X

VRT Lazy Tv Sam U451

TAU TAU MS SAM 311A

TAU Ms Aberdeen 166Y

CED	BW	WW	YW	MK	TM	CEM	ST	YG	CW	REA	MB	FT	FPI
17	-0.7	69	107	33	68	11	5	-0.40	32	.80	.60	.00	90.08

Exposed to TAU Mr. Final Answer 259Y 5/24/2016-7/10/2016

BA63 BLACK POLLED HEIFER

Lot 114 | **TAU MS. GRID TOPPER 43T 574C**

★ Calved: 2/2/2015 ★ Tattoo: TAU 574C ★ Reg. #: AMGV1370015

Birth Weight: 80 **Adj. 205-day Wt: 577**

TC Grid Topper 355

TAU MR. GRID TOPPER 43T

TAU Miss Ty 3130N

TAU Mr Hy-Per Active 60W ET

TAU MS. HYPER ACTIVE 2131Z

TAU Ms. Tuned In 084X

CED	BW	WW	YW	MK	TM	CEM	ST	YG	CW	REA	MB	FT	FPI
9	2	69	99	16	50	5	1	-0.39	31	.63	.28	-0.05	74.08

A.I.'ed to TAU Outright 162A on 5/6/2016

BA63 BLACK POLLED HEIFER

Lot 115 | **TAU MS GRID TOPPER 43T 579C**

★ Calved: 2/3/2015 ★ Tattoo: TAU 579C ★ Reg. #: AMGV1319683

Birth Weight: 76 **Adj. 205-day Wt: 568**

TC Grid Topper 355

TAU MR GRID TOPPER 43T

TAU Miss Ty 3130N

HYEK Black Impact 3960N

TAU TAU MS IMPACT 235Z

TAU Ms Traveler T510 634S

CED	BW	WW	YW	MK	TM	CEM	ST	YG	CW	REA	MB	FT	FPI
10	0.8	65	94	15	48	4	-1	-0.40	26	.60	.30	.00	74.13

A.I.'ed to JRI Multitool 706A22 on 5/14/2016

All heifers exposed to TAU Mr. Final Answer 259Y from May 24th, 2016 to July 10th, 2016

BA50 BLACK POLLED HEIFER

Lot 116 **TAU MS. WINDY 078 583C**

★ Calved: 2/3/2015 ★ Tattoo: TAU 583C ★ Reg. #: AMGV1323542
Birth Weight: 80 Adj. 205-day Wt: 631
 H A R B Windy 702 JH
APEX WINDY 078
 Apexette Lucy 6037
 ELK CK WILD BILL 42U
TAU MS WILD BILL 198Y
 TAU Ms Honor Roll 8236U

CED	BW	WW	YW	MK	TM	CEM	ST	YG	CW	REA	MB	FT	FPI
6	0.1	63	94	30	61	0	3	-14	26	.50	.18	-.02	69.81

Exposed to TAU Mr. Final Answer 259Y 5/24/2016-7/10/2016

BA63 BLACK POLLED HEIFER

Lot 117 **TAU MS. FINAL LEAD 585C**

★ Calved: 2/4/2015 ★ Tattoo: TAU 585C ★ Reg. #: AMGV1323547
Birth Weight: 89 Adj. 205-day Wt: 666
 TAU Final Countdown 59Y
TAU FINAL LEAD 42A
 TAU Miss Tsunami 743T
 VRT RUP Lazy Tv Hotfudge J357
TAU HOT FUDGE 9137W
 TAU Ms Lead On 463P

CED	BW	WW	YW	MK	TM	CEM	ST	YG	CW	REA	MB	FT	FPI
9	2	74	110	26	64	7	6	-.30	38	.60	.30	.00	78.85

A.I.'ed to Ruppel GMCC Gunnison N31 on 5/21/2016

BA38 BLACK POLLED HEIFER

Lot 118 **TAU MS. TOP GUN 587C**

★ Calved: 2/4/2015 ★ Tattoo: TAU 587C ★ Reg. #: AMGV1369313
Birth Weight: 78 Adj. 205-day Wt: 634
 TAU Mr Grid Topper 43T
TAU TOP GUN 292Y
 TAU Ms 4153P
 HXC HXC Conquest 4405P
TAU MS CONQUEST 153Y
 TAU Miss Blackjack 114L

CED	BW	WW	YW	MK	TM	CEM	ST	YG	CW	REA	MB	FT	FPI
11	0.3	74	103	17	54	8	2	-.29	30	.46	.24	-.03	78.07

A.I.'ed to JRI Multitool 706A22 on 5/14/2016

BA63 BLACK POLLED HEIFER

Lot 119 **TAU MS. FINAL COUNTDOWN 595C**

★ Calved: 2/6/2015 ★ Tattoo: TAU 595C ★ Reg. #: AMGV1326337
Birth Weight: 78 Adj. 205-day Wt: 553
 S A V Final Answer 0035
TAU FINAL COUNTDOWN 59Y
 TAU Ms Gunnison 7211T ET
 GMCC Ruppel Gunnison N31
TAU MS GUNNISON N31 822U
 TAU Ms Freedom 6277S

CED	BW	WW	YW	MK	TM	CEM	ST	YG	CW	REA	MB	FT	FPI
13	1.4	74	107	23	60	7	12	-.30	33	.60	.30	.00	80.02

A.I.'ed to TAU Mr. In Focus 22Z on 5/19/2016

BA38 BLACK POLLED HEIFER

Lot 120 **TAU MS RITO 9969 591C**

★ Calved: 2/6/2015 ★ Tattoo: TAU 591C ★ Reg. #: Commercial
Birth Weight: 82 Adj. 205-day Wt: 620
 RITO 707 Of Ideal 3407 7075
SAV 707 RITO 9969
 BR Polly 8077-472
 SLWD Mr Bucky 41T
TAU MS. BUCKY 1119Y
 TAU Ms. Gunnison 725T

CED	BW	WW	YW	MK	TM	CEM	ST	YG	CW	REA	MB	FT	FPI
2	1.5	63	105	19	50	4	4	-13	36	.28	.01	-.03	62.41

A.I.'ed to JRI Multitool 706A22 on 4/30/2016

BA50 BLACK POLLED HEIFER

Lot 121 **TAU MS GRID TOPPER 43T 5003C**

★ Calved: 2/8/2015 ★ Tattoo: TAU 5003C ★ Reg. #: AMGV1320269
Birth Weight: 78 Adj. 205-day Wt: 605
 TC Grid Topper 355
TAU MR GRID TOPPER 43T
 TAU Miss Ty 3130N
 DMRS Mr TC Total 048X
TAU TAU TOTAL 2071Z
 TAU Miss Traveler 2T22 703T

CED	BW	WW	YW	MK	TM	CEM	ST	YG	CW	REA	MB	FT	FPI
9	1	72	106	16	52	6	1	-.30	34	.70	.40	.00	80.02

A.I.'ed to JRI Multitool 706A22 on 5/21/2016



**Reserve Supreme Balancer Female
 2016 Gelbvieh Junior Nationals**

BA38 BLACK POLLED HEIFER

Lot 122 **TAU MISS CONSENSUS 5016C ET**

★ Calved: 2/10/2015 ★ Tattoo: TAU 5016C ★ Reg. #: AMGV1323737
Birth Weight: 80 Adj. 205-day Wt: 617
 Connealy Consensus
CONNELLY CONSENSUS 7229
 Blue Lilly Of Conanga 16
 GMCC Ruppel Gunnison N31
TAU MS GUNNISON 7211T ET
 TAU Ms Dr P Of 516E 716G

CED	BW	WW	YW	MK	TM	CEM	ST	YG	CW	REA	MB	FT	FPI
12	0.9	68	103	28	62	5	1	-.02	33	.64	.62	.04	84.06

A.I.'ed to SLC Freedom 178F ET on 5/18/2016

All heifers exposed to TAU Mr. Final Answer 259Y from May 24th, 2016 to July 10th, 2016

BREED HEIFERS

BA38 BLACK POLLED HEIFER

Lot 123 **TAU MS. CONSENSUS 5051C ET**

★ Calved: 2/19/2015 ★ Tattoo: TAU 5051C ★ Reg. #: AMGV1326395
Birth Weight: 78 Adj. 205-day Wt: 509

Connealy Consensus
CONNEALY CONSENSUS 7229
 Blue Lilly Of Conanga 16

GMCC Ruppel Gunnison N31
TAU MS GUNNISON 7211T ET
 TAU Ms Dr P Of 516E 716G

CED	BW	WW	YW	MK	TM	CEM	ST	YG	CW	REA	MB	FT	FPI
12	0.9	68	103	28	62	5	1	-.02	33	.64	.62	.04	84.06

A.I.'ed to JRI Multitool 706A22 on 5/22/2016

BA63 BLACK POLLED HEIFER

Lot 124 **TAU TAU HEAVENLY 5020C**

★ Calved: 2/11/2015 ★ Tattoo: TAU 5020C ★ Reg. #: AMGV1319027
Birth Weight: 85 Adj. 205-day Wt: 745

TAU Final Countdown 59Y
TAU FINAL LEAD 42A
 TAU Miss Tsunami 743T

GMCC Ruppel Gunnison N31
TAU MS GUNNISON 052X
 TAU Miss Hyline 839U

CED	BW	WW	YW	MK	TM	CEM	ST	YG	CW	REA	MB	FT	FPI
12	1.4	76	110	30	68	8	10	-.30	37	.60	.30	.00	81.56

A.I.'ed to TAU Affluent 225B on 5/15/2016

BA50 BLACK POLLED HEIFER

Lot 125 **TAU MS IRONMAN 250Y 5029C**

★ Calved: 2/12/2015 ★ Tattoo: TAU 5029C ★ Reg. #: AMGV1328520
Birth Weight: 85 Adj. 205-day Wt: 618

TC Gridiron 782
TAU MR GRIDIRON 250Y
 TAU Ms Tsunami 8217U

TAU Tuned In 55T
TAU MS TUNED IN 0187X
 TAU Miss Traveler 6807 407P

CED	BW	WW	YW	MK	TM	CEM	ST	YG	CW	REA	MB	FT	FPI
8	1.4	68	109	15	49	5	4	-.09	37	.44	.20	-.03	71.21

A.I.'ed to JRI Multitool 706A22 on 4/22/2016

BA50 BLACK POLLED HEIFER

Lot 126 **TAU MISS CONSENSUS 5033C ET**

★ Calved: 2/13/2015 ★ Tattoo: TAU 5033C ★ Reg. #: AMGV1323911
Birth Weight: 70 Adj. 205-day Wt: 616

Connealy Consensus
CONNEALY CONSENSUS 7229
 Blue Lilly Of Conanga 16

GMCC Ruppel Gunnison N31
TAU GUNNISON 5151R
 TAU Miss Bennets Bonus 230M

CED	BW	WW	YW	MK	TM	CEM	ST	YG	CW	REA	MB	FT	FPI
14	0.2	65	100	26	59	7	1	-.09	30	.84	.65	.04	84.27

A.I.'ed to Ruppel GMCC Gunnison N31 on 5/17/2016

BA50 BLACK POLLED HEIFER

Lot 127 **TAU MS TOP GUN 5042C**

★ Calved: 2/15/2015 ★ Tattoo: TAU 5042C ★ Reg. #: AMGV1323918
Birth Weight: 89 Adj. 205-day Wt: 713

TAU Mr Grid Topper 43T
TAU TOP GUN 292Y
 TAU Ms 4153P

TC Grid Topper 355
TAU MISS GRID TOPPER 864U
 TAU Ms Empire 007K 200B

CED	BW	WW	YW	MK	TM	CEM	ST	YG	CW	REA	MB	FT	FPI
8	1.1	74	105	13	49	7	5	-.40	31	.60	.30	.00	77.79

Exposed to TAU Mr. Final Answer 259Y 5/24/2016-7/10/2016

BA38 BLACK POLLED HEIFER

Lot 128 **TAU MS CONSENSUS 5017C ET**

★ Calved: 2/11/2015 ★ Tattoo: TAU 5017C ★ Reg. #: AMGV1323766
Birth Weight: 75 Adj. 205-day Wt: 665

Connealy Consensus
CONNEALY CONSENSUS 7229
 Blue Lilly Of Conanga 16

TAU Gunnison 106R
TAU MISS GUNNISON 106R 8101U
 TAU Ms Freedom 425P

CED	BW	WW	YW	MK	TM	CEM	ST	YG	CW	REA	MB	FT	FPI
12	-.01	67	103	18	51	6	1	-.10	28	.60	.70	.10	85.90

A.I.'ed to JRI Multitool 706A22 on 5/17/2016

BA50 BLACK POLLED HEIFER

Lot 129 **TAU MS OUT RIGHT 5063C**

★ Calved: 2/22/2015 ★ Tattoo: TAU 5063C ★ Reg. #: AMGV1323956
Birth Weight: 80 Adj. 205-day Wt: 610

Connealy Consensus 7229
TAU OUTRIGHT 162A
 TAU Gunnison 5151R

TC Grid Topper 355
TAU MS GRID TOPPER 9165W
 TAU Miss Rodeo Drive 267M

CED	BW	WW	YW	MK	TM	CEM	ST	YG	CW	REA	MB	FT	FPI
9	1.4	78	131	21	60	9	8	-.20	51	.80	.50	.00	86.54

A.I.'ed to TAU Mr. In Focus 22Z on 5/19/2016

BA50 BLACK POLLED HEIFER

Lot 130 **TAU MS GRAVITY 5064C**

★ Calved: 2/22/2015 ★ Tattoo: TAU 5064C ★ Reg. #: AMGV1323958
Birth Weight: 84 Adj. 205-day Wt: 635

CTR CTR Sandhills 0065X
BGGR BGGR GRAVITY 803A
 BGGR Ms Frontpage 803U

HYEK Black Impact 3960N
TAU MS BLACK IMPACT 1061Y
 TAU Ms Fine Tuned 972W

CED	BW	WW	YW	MK	TM	CEM	ST	YG	CW	REA	MB	FT	FPI
11	2	70	109	24	59	6	4	-.30	37	.60	.20	.00	74.43

A.I.'ed to Connealy Stingray 9618 on 5/15/2016

BA38 BLACK POLLED HEIFER

Lot 131 **TAU MS HARVESTOR 5066C**

★ Calved: 2/23/2015 ★ Tattoo: TAU 5066C ★ Reg. #: AMGV1323967

Birth Weight: 85 **Adj. 205-day Wt: 621**

S A V Heritage 6295

S A V Harvester 0338

S A V Emblynette 7749

TAU Mr Sleepy 204P

TAU MS SLEEPY 204P 7263T

TAU Miss Dee 404D

CED	BW	WW	YW	MK	TM	CEM	ST	YG	CW	REA	MB	FT	FPI
3	1.9	65	105	30	62	2	5	.05	36	.50	.38	.04	72.71

A.I.'ed to JRI Multitool 706A22 on 5/13/2016

BA63 RED POLLED HEIFER

Lot 132 **TAU MS FINAL ANSWER 5071C**

★ Calved: 2/25/2015 ★ Tattoo: TAU 5071C ★ Reg. #: AMGV1323977

Birth Weight: 70 **Adj. 205-day Wt: 472**

S A V Final Answer 0035

TAU MR FINAL ANSWER 259Y

TAU Miss Boo Boo 106L

GMCC Ruppel Gunnison N31

TAU MS GUNNISON 6132S

TAU Ms 801X 628F

CED	BW	WW	YW	MK	TM	CEM	ST	YG	CW	REA	MB	FT	FPI
15	-0.8	52	71	25	51	12	8	-.30	13	.60	.40	.00	72.36

A.I.'ed to JRI Multitool 706A22 on 5/15/2016

BA50 BLACK POLLED HEIFER

Lot 133 **TAU MS OUT RIGHT 5078C**

★ Calved: 2/27/2015 ★ Tattoo: TAU 5078C ★ Reg. #: AMGV1324018

Birth Weight: 80 **Adj. 205-day Wt: 567**

Connealy Consensus 7229

TAU OUTRIGHT 162A

TAU Gunnison 5151R

TC Freedom 104

TAU MISS TC FREEDOM 899U

TAU Miss Big Sky 329N

CED	BW	WW	YW	MK	TM	CEM	ST	YG	CW	REA	MB	FT	FPI
13	0.3	68	111	29	63	8	8	-.20	37	.60	.50	.00	83.55

A.I.'ed to SLC Freedom 178F ET on 5/21/2016

BA50 BLACK POLLED HEIFER

Lot 134 **TAU MS GRID TOPPER 5084C**

★ Calved: 3/1/2015 ★ Tattoo: TAU 5084C ★ Reg. #: AMGV1324024

Birth Weight: 82 **Adj. 205-day Wt: 674**

TC Grid Topper 355

TAU MR GRID TOPPER 43T

TAU Miss Ty 3130N

H A R B Windy 702 JH

TAU TAU MS WINDY 2047Z

TAU Power Pac 9070 487P

CED	BW	WW	YW	MK	TM	CEM	ST	YG	CW	REA	MB	FT	FPI
11	0.6	64	95	15	47	6	-1	-.30	27	.50	.30	.00	73.66

A.I.'ed to JRI Multitool 706A22 on 5/16/2016

BA63 BLACK POLLED HEIFER

Lot 135 **TAU MS. SANDHILLS 5091C ET**

★ Calved: 3/2/2015 ★ Tattoo: TAU 5091C ★ Reg. #: AMGV1326429

Birth Weight: 83 **Adj. 205-day Wt: 501**

CTR Sandman 6523S

CTR CTR SANDHILLS 0065X

CTR 7281T

TAU Gunnison 106R

TAU MISS GUNNISON 106R 8101U

TAU Ms Freedom 425P

CED	BW	WW	YW	MK	TM	CEM	ST	YG	CW	REA	MB	FT	FPI
11	2	68	97	15	49	7	1	-.30	27	.50	.30	.00	73.88

Exposed to TAU Mr. Final Answer 259Y 5/24/2016-7/10/2016

BA50 BLACK POLLED HEIFER

Lot 136 **TAU MS GRID TOPPER 5105C**

★ Calved: 3/6/2015 ★ Tattoo: TAU 5105C ★ Reg. #: AMGV1324047

Birth Weight: 80 **Adj. 205-day Wt: 643**

TC Grid Topper 355

TAU MR GRID TOPPER 43T

TAU Miss Ty 3130N

TC Gridiron 782

TAU MS GRIDIRON 158Y

TAU Ms Night Moves 8169U

CED	BW	WW	YW	MK	TM	CEM	ST	YG	CW	REA	MB	FT	FPI
7	1.6	73	107	10	47	4	1	-.30	36	.70	.30	.00	76.32

A.I.'ed to TAU Mr. In Focus 22Z on 4/30/2016

BA50 BLACK POLLED HEIFER

Lot 137 **TAU MS IN FOCUS 22Z 5110C**

★ Calved: 3/7/2015 ★ Tattoo: TAU 5110C ★ Reg. #: AMGV1324052

Birth Weight: 79 **Adj. 205-day Wt: 605**

MYTTY In Focus

TAU TAU MR IN FOCUS 22Z

TAU Ms Gunnison 028X

GMCC Ruppel Gunnison N31

TAU MS GUNNISON 8190U

TAU Ms Buster 6156S

CED	BW	WW	YW	MK	TM	CEM	ST	YG	CW	REA	MB	FT	FPI
17	0.1	66	98	25	57	10	6	-.30	28	.50	.60	.00	85.34

A.I.'ed to TAU Mr. In Focus 22Z on 5/14/2016

BA50 BLACK POLLED HEIFER

Lot 138 **TAU MS. PROSPEROUS 5125C**

★ Calved: 3/14/2015 ★ Tattoo: TAU 5125C ★ Reg. #: AMGV1326548

Birth Weight: 80 **Adj. 205-day Wt: 719**

S A V Prosperity 9131

Vision Prosperity 2324

Top Line Lassie 0849

TAU Mr Hy-Per Active 60W ET

TAU HY-PER ACTIVE 60WET 1111Y

TAU Ms Honor Roll 9109W

CED	BW	WW	YW	MK	TM	CEM	ST	YG	CW	REA	MB	FT	FPI
11	0.3	68	103	32	66	7	4	-.26	31	.85	.51	-.03	83.47

A.I.'ed to SLC Freedom 178F ET on 5/17/2016

BRED HEIFERS

All heifers exposed to TAU Mr. Final Answer 259Y from May 24th, 2016 to July 10th, 2016



BA63 BLACK POLLED HEIFER

Lot 139 | **TAU MS CANADA 5142C**

★ Calved: 3/20/2015 ★ Tattoo: TAU 5142C ★ Reg. #: AMGV1326812

Birth Weight: 84 **Adj. 205-day Wt: 717**

DDGR Navaho 188X

DVE DAVIDSON RIGHTONE 49Z
DVE Davidson Rose 69N

MYTTY In Focus

TAU MISS IN FOCUS 927W
TAU Ms Grid Topper 7220T

CED	BW	WW	YW	MK	TM	CEM	ST	YG	CW	REA	MB	FT	FPI
10	0.8	80	116	27	67	9	10	-0.7	39	.29	.25	-0.04	81.10

A.I.'ed to Connealy Stingray 9618 on 5/21/2016

BA50 BLACK POLLED HEIFER

Lot 140 | **TAU MS. IRONMAN 5002C**

★ Calved: 2/7/2015 ★ Tattoo: TAU 5002C ★ Reg. #: Commercial

Birth Weight: **Adj. 205-day Wt:**

TC Gridiron 782

TAU MR. GRIDIRON 250Y
TAU Ms Tsunami 8217U

CED	BW	WW	YW	MK	TM	CEM	ST	YG	CW	REA	MB	FT	FPI

A.I.'ed to TAU Mr. In Focus 22Z on 5/13/2016

BA63 BLACK POLLED HEIFER

Lot 141 | **TAU MS. DEEP IMPACT 5119C**

★ Calved: 3/10/2015 ★ Tattoo: TAU 5119C ★ Reg. #: Commercial

Birth Weight: **Adj. 205-day Wt:**

HYEK Black Impact 3960N

TAU DEEP IMPACT 126A
TAU Ms. Gunnison 7211T ET

CED	BW	WW	YW	MK	TM	CEM	ST	YG	CW	REA	MB	FT	FPI

A.I.'ed to TAU Outright 162A on 4/30/2016

All heifers exposed to TAU Mr. Final Answer 259Y from May 24th, 2016 to July 10th, 2016

Gelbvieh and Balancer® Breed Average EPDS (For active sires, as of the Fall 2016 International Cattle Evaluation)

	Growth and Maternal EPDs										Index Values		
	CED	BW	WW	YW	MK	TM	CEM	HP	PG30	ST			
Gelbvieh	9	1.2	67	92	29	62	6	4	1	4			
Balancer®	12	-0.1	65	99	25	57	7	4	1	3			
	Intake and Carcass EPDs								Index Values				
	DMI	YG	CW	RE	MB	FT	ADG	RFI	\$Cow	FPI	EPI		
Gelbvieh	-0.000	-0.37	26	0.47	-0.23	-0.07	-0.046	-0.007	48.89	61.98	64.29		
Balancer®	0.034	-0.25	28	0.45	0.29	-0.03	0.026	-0.011	48.34	75.72	115.51		

Gelbvieh and Balancer® Breed Average EPDS (For active dams, as of the Fall 2016 International Cattle Evaluation)

	Growth and Maternal EPDs										Index Values		
	CED	BW	WW	YW	MK	TM	CEM	HP	PG30	ST			
Gelbvieh	8	1.6	65	89	28	61	6	3	1	4			
Balancer®	10	0.4	62	93	25	56	6	4	1	3			
	Intake and Carcass EPDs								Index Values				
	DMI	YG	CW	RE	MB	FT	ADG	RFI	\$Cow	FPI	EPI		
Gelbvieh	-0.004	-0.28	25	0.45	-0.21	-0.07	-0.048	-0.006	48.98	60.08	61.08		
Balancer®	0.009	-0.16	26	0.39	0.20	-0.04	0.014	-0.002	47.90	70.65	105.86		

Gelbvieh and Balancer® Breed Average EPDS (For non-parents, as of the Fall 2016 International Cattle Evaluation)

	Growth and Maternal EPDs										Index Values		
	CED	BW	WW	YW	MK	TM	CEM	HP	PG30	ST			
Gelbvieh	9	1.2	67	93	29	62	6	4	1	5			
Balancer®	11	0.0	65	98	25	58	6	4	1	4			
	Intake and Carcass EPDs								Index Values				
	DMI	YG	CW	RE	MB	FT	ADG	RFI	\$Cow	FPI	EPI		
Gelbvieh	-0.001	-0.35	26	0.46	-0.21	-0.08	-0.046	-0.006	54.95	62.53	65.77		
Balancer®	0.016	-0.25	28	0.45	0.27	-0.03	0.018	-0.007	51.90	75.02	111.96		

BA75 BLACK POLLED HEIFER

Lot 142 **TAU MS ZZ TOP 6093D**

★ Calved: 2/19/2016 ★ Tattoo: TAU 6093D ★ Reg. #: AMGV1353817

Birth Weight: 85 **Adj. 205-day Wt: 671**

BABR Who Done It

OGSG ZZ TOP 620Z

BOKG Salena 620S

S A V Bismarck 5682

TAU TAU MS BISMARCK 2096Z

TAU TAU Freedom 452P

CED	BW	WW	YW	MK	TM	CEM	ST	YG	CW	REA	MB	FT	FPI
11	1.40	70	100	28	62	11	5	-28	31	.53	-.05	-.07	67.50

PB88 BLACK POLLED HEIFER

Lot 143 **TAU MS. 50Z 6121D**

★ Calved: 2/29/2016 ★ Tattoo: TAU 6121D ★ Reg. #: AMGV1360192

Birth Weight: 76 **Adj. 205-day Wt: 631**

HYEK Black Impact 3960N

TAU TAU MR IMPACT 50Z

TAU Ms Onix 5108R

BABR Tsunami 447P

TAU MISS TSUNAMI 759T

TAU Ms Lead On 463P

CED	BW	WW	YW	MK	TM	CEM	ST	YG	CW	REA	MB	FT	FPI
8	.50	65	83	28	60	6	6	-.44	20	.57	-.10	-.06	64.60

BA75 BLACK POLLED HEIFER

Lot 144 **TAU MS. ZZ TOP 6169D**

★ Calved: 3/29/2016 ★ Tattoo: TAU 6169D ★ Reg. #: AMGV1365799

Birth Weight: 85 **Adj. 205-day Wt: 635**

BABR Who Done It

OGSG ZZ TOP 620Z

BOKG Salena 620S

MYTTY In Focus

TAU TAU MS IN FOCUS 313A

TAU Hy-Per Active 60WET 1111Y

CED	BW	WW	YW	MK	TM	CEM	ST	YG	CW	REA	MB	FT	FPI
13	1.30	68	100	30	64	10	6	-.19	30	.35	.07	-.06	70.87

BA50 BLACK POLLED HEIFER

Lot 145 **TAU MS IN FOCUS 641D**

★ Calved: 1/24/2016 ★ Tattoo: TAU 641D ★ Reg. #: AMGV1350317

Birth Weight: 66 **Adj. 205-day Wt: 536**

S A F Focus Of E R

MYTTY IN FOCUS

MYTTY Countess 906

HYEK Black Impact 3960N

TAU MS. IMPACT 404B ET

TAU Ms Gunnison 106R 8204U

CED	BW	WW	YW	MK	TM	CEM	ST	YG	CW	REA	MB	FT	FPI
16	-1.80	64	102	24	58	7	1	-.04	27	.25	.43	-.01	83.31

BA50 BLACK POLLED HEIFER

Lot 146 **TAU MS CONSENSUS 649D ET**

★ Calved: 1/25/2016 ★ Tattoo: TAU 649D ★ Reg. #: AMGV1350330

Birth Weight: 74 **Adj. 205-day Wt: 608**

Connealy Consensus

CONNEALY CONSENSUS 7229

Blue Lilly of Conanga 16

GMCC Ruppel Gunnison N31

TAU GUNNISON 5151R

TAU Miss Bennets Bonus 230M

CED	BW	WW	YW	MK	TM	CEM	ST	YG	CW	REA	MB	FT	FPI
14	.20	65	100	26	59	7	1	-.09	30	.84	.65	.04	84.27

BA50 BLACK POLLED HEIFER

Lot 147 **TAU MS GRID TOPPER 43T 675D**

★ Calved: 1/31/2016 ★ Tattoo: TAU 675D ★ Reg. #: AMGV1350712

Birth Weight: 75 **Adj. 205-day Wt: 607**

TC Grid Topper 355

TAU MR GRID TOPPER 43T

TAU Miss Ty 3130N

Hoover Dam

TAU MS HOOVER DAM 3020A

TAU Miss Freedom 371N TWIN

CED	BW	WW	YW	MK	TM	CEM	ST	YG	CW	REA	MB	FT	FPI
9	.40	72	105	13	48	7	1	-.40	33	.80	.30	.00	77.33

BA38 BLACK POLLED HEIFER

Lot 148 **TAU MS IN FOCUS 683D**

★ Calved: 2/2/2016 ★ Tattoo: TAU 683D ★ Reg. #: AMGV1350725

Birth Weight: 66 **Adj. 205-day Wt: 509**

S A F FOCUS OF E R

MYTTY IN FOCUS

MYTTY Countess 906

VRT Lazy Tv Sam U451

TAU MS LAZY 496B

TAU TAU Ms Gunnison 514Z

CED	BW	WW	YW	MK	TM	CEM	ST	YG	CW	REA	MB	FT	FPI
18	-2.10	61	104	30	64	10	4	-.12	28	.32	.57	-.04	88.91

BA50 BLACK POLLED HEIFER

Lot 149 **TAU MR GRID TOPPER 43T 685D**

★ Calved: 2/2/2016 ★ Tattoo: TAU 685D ★ Reg. #: AMGV1350729

Birth Weight: 80 **Adj. 205-day Wt: 613**

TC Grid Topper 355

TAU MR GRID TOPPER 43T

TAU Miss Ty 3130N

Hoover Dam

TAU MS HOOVER DAM 391A

TAU Ms Tsunami 946W

CED	BW	WW	YW	MK	TM	CEM	ST	YG	CW	REA	MB	FT	FPI
9	-.10	63	96	15	47	5	1	-.40	27	.80	.40	.00	77.05

OPEN HEIFERS

BA50 BLACK POLLED HEIFER

Lot 150 **TAU MS PROSPERITY 689D**

★ Calved: 2/3/2016 ★ Tattoo: TAU 689D ★ Reg. #: AMG1350731

Birth Weight: 80 Adj. 205-day Wt: 663

S A V Prosperity 9131
Vision Prosperity 2324
Top Line Lassie 0849

VRT Lazy Tv Sam U451
TAU MS SAMMY 385A
TAU Ms Freedom 133Y

CED	BW	WW	YW	MK	TM	CEM	ST	YG	CW	REA	MB	FT	FPI
11	-.30	68	105	33	67	7	3	-.25	32	.78	.50	-.03	83.89

BA38 BLACK POLLED HEIFER

Lot 151 **TAU MS AFFLUENT 6013D**

★ Calved: 2/8/2016 ★ Tattoo: TAU 6013D ★ Reg. #: AMG1353063

Birth Weight: 76 Adj. 205-day Wt: 533

Vision Prosperity 2324
TAU AFFLUENT 225B
TAU Ms Gunnison 028X

BT Crossover 758N
TAU MS CROSSOVER 863U
TAU Miss Bennets Bonus 230M

CED	BW	WW	YW	MK	TM	CEM	ST	YG	CW	REA	MB	FT	FPI
13	.20	67	105	28	62	9	6	-.50	33	1.00	.60	.00	86.53

BA63 BLACK POLLED HEIFER

Lot 152 **TAU MS VICRAM 6028D**

★ Calved: 2/10/2016 ★ Tattoo: TAU 6028D ★ Reg. #: AMG1353733

Birth Weight: 76 Adj. 205-day Wt: 619

STON Xterminator 7X
TJB VICKRAM 342A-ET
TJB Velvet 912U-ET ET

S A V Final Answer 0035
TAU MS FINAL ANSWER 3103A
TAU Miss Sleepy 204P 798T

CED	BW	WW	YW	MK	TM	CEM	ST	YG	CW	REA	MB	FT	FPI
13	.00	76	106	24	60	8	6	-.20	29	.50	.10	.00	74.32

BA50 BLACK POLLED HEIFER

Lot 153 **TAU MS AFFLUENT 6035D**

★ Calved: 2/11/2016 ★ Tattoo: TAU 6035D ★ Reg. #: AMG1353736

Birth Weight: 80 Adj. 205-day Wt: 555

Vision Prosperity 2324
TAU AFFLUENT 225B
TAU Ms Gunnison 028X

SLWD Mr Bucky
TAU MS BUCKY 0203X
TAU Krugerrand 5158R

CED	BW	WW	YW	MK	TM	CEM	ST	YG	CW	REA	MB	FT	FPI
11	.60	63	99	21	54	8	6	-.30	30	.70	.40	.00	77.63

BA50 BLACK POLLED HEIFER

Lot 154 **TAU MS FINAL ANSWER 6042D**

★ Calved: 2/12/2016 ★ Tattoo: TAU 6042D ★ Reg. #: AMG1353748

Birth Weight: 72 Adj. 205-day Wt: 562

SITZ Traveler 8180
S A V FINAL ANSWER 0035
S A V Emulous 8145

HYEK Black Impact 3960N
TAU MS. IMPACT 411B ET
TAU Ms Gunnison 106R 8204U

CED	BW	WW	YW	MK	TM	CEM	ST	YG	CW	REA	MB	FT	FPI
16	-1.50	72	106	22	58	7	4	-.16	31	.61	.27	.01	81.79

BA50 BLACK POLLED HEIFER

Lot 155 **TAU MS TOP GUN 6048D**

★ Calved: 2/12/2016 ★ Tattoo: TAU 6048D ★ Reg. #: AMG1353755

Birth Weight: 84 Adj. 205-day Wt: 567

TAU Mr Grid Topper 43T
TAU TOP GUN 292Y
TAU Ms 4153P

TC Grid Topper 355
TAU MISS GRID TOPPER 864U
TAU Ms Empire 007K 200B

CED	BW	WW	YW	MK	TM	CEM	ST	YG	CW	REA	MB	FT	FPI
8	1.10	74	105	13	49	7	4	-.40	31	.60	.30	.00	77.79

BA38 BLACK POLLED HEIFER

Lot 156 **TAU MS. AFFLUENT 6053D**

★ Calved: 2/13/2016 ★ Tattoo: TAU 6053D ★ Reg. #: AMG1369311

Birth Weight: 78 Adj. 205-day Wt: 611

Vision Prosperity 2324
TAU AFFLUENT 225B
TAU Ms Gunnison 028X

TAU Mr Sleepy 204P
TAU MS SLEEPY 204P 0208X
T G Ms C365 0121K Of 636F

CED	BW	WW	YW	MK	TM	CEM	ST	YG	CW	REA	MB	FT	FPI
10	1.00	62	95	26	56	8	4	-.35	28	.67	.42	-.02	76.29

Have a Great BEEF Experience with Traeger.

★

Sale Day Special



Taste - Food tastes better when cooked with pure wood pellets!

Smoke - Flip a switch and now you own the best smoker!

★ *Cooks Better - No need to babysit this grill- fully automatic. Fewer flare-ups!* ★

Safe - Far safer than gas or charcoal! No gas explosions, no hot coals. Safe, "politically correct" all natural, hardwood barbecue pellets!

Environmentally Friendly - Wood pellets are a clean-burning, 100% natural, renewable resource.

Purchase from the Taubenheims

BA38 BLACK POLLED HEIFER

Lot 157 **TAU MS. RESOURCE 6079D**

★ Calved: 2/16/2016 ★ Tattoo: TAU 6079D ★ Reg. #: AMGV1369404

Birth Weight: 78 Adj. 205-day Wt: 580

RITO 707 Of Ideal 3407 7075

S A V RESOURCE 1441

S A V Blackcap May 4136

SGRI Honor Roll S232

TAU MS HONOR ROLL 8127U

TAU Ms Gunnison 5150R

CED	BW	WW	YW	MK	TM	CEM	ST	YG	CW	REA	MB	FT	FPI
10	1.30	74	116	28	65	4				.62	.15	.04	75.73

BA50 BLACK POLLED HEIFER

Lot 158 **TAU MS PREMIUM 6092D**

★ Calved: 2/19/2016 ★ Tattoo: TAU 6092D ★ Reg. #: AMGV1353815

Birth Weight: 80 Adj. 205-day Wt: 526

RHRG Mr Premium 9152W ET

RHRG MR PREMIUM 278Z

RHRG Snuffles 653S

TAU Mr Grid Topper 43T

TAU TAU MS 43T 2100Z

TAU Miss Blackjack 78K 4167P

CED	BW	WW	YW	MK	TM	CEM	ST	YG	CW	REA	MB	FT	FPI
7	1.80	60	93	23	55	9	0	-.23	28	.38	.07	-.07	65.74

BA50 BLACK POLLED HEIFER

Lot 159 **TAU MS AFFLUENT 6108D**

★ Calved: 2/25/2016 ★ Tattoo: TAU 6108D ★ Reg. #: AMGV1353837

Birth Weight: 78 Adj. 205-day Wt: 608

Vision Prosperity 2324

TAU AFFLUENT 225B

TAU Ms Gunnison 028X

BABR Tsunami 447P

TAU MS TSUNAMI 8208U

TAU Ms Gunnison 587R

CED	BW	WW	YW	MK	TM	CEM	ST	YG	CW	REA	MB	FT	FPI
11	.60	68	96	26	58	8	4	-.40	28	.70	.50	.00	80.86

BA63 BLACK POLLED HEIFER

Lot 160 **TAU MS. TOTAL 6124D**

★ Calved: 3/1/2016 ★ Tattoo: TAU 6124D ★ Reg. #: AMGV1368926

Birth Weight: 82 Adj. 205-day Wt: 620

TC Total 410

DMRS MR TC TOTAL 048X

DMRS Rikki 52R

TAU MR Gunnison 106R 230U

TAU MS. GUNNISON 230U 2183Z

TAU Ms T510 2T22 721T

CED	BW	WW	YW	MK	TM	CEM	ST	YG	CW	REA	MB	FT	FPI
9	1.30	70	100	27	62	10	3	-.15	31	.64	.33	-.01	76.62

BA38 BLACK POLLED HEIFER

Lot 161 **TAU MS. TOTAL 6149D**

★ Calved: 3/12/2016 ★ Tattoo: TAU 6149D ★ Reg. #: AMGV1365457

Birth Weight: 80 Adj. 205-day Wt: 723

TC Total 410

DMRS MR TC TOTAL 048X

DMRS Rikki 52R

MYTTY In Focus

TAU MISS IN FOCUS 927W

TAU Ms Grid Topper 7220T

CED	BW	WW	YW	MK	TM	CEM	ST	YG	CW	REA	MB	FT	FPI
9	.60	73	112	31	67	9	4	-.07	38	.42	.54	-.02	85.13

BA50 BLACK POLLED HEIFER

Lot 162 **TAU MS. GRID TOPPER 43T 6151D**

★ Calved: 3/16/2016 ★ Tattoo: TAU 6151D ★ Reg. #: AMGV1369312

Birth Weight: 86 Adj. 205-day Wt: 645

TC Grid Topper 355

TAU MR GRID TOPPER 43T

TAU Miss Ty 3130N

TC Aberdeen 759

TAU MS ABERDEEN 166Y

TAU Miss Sleepy 3156N

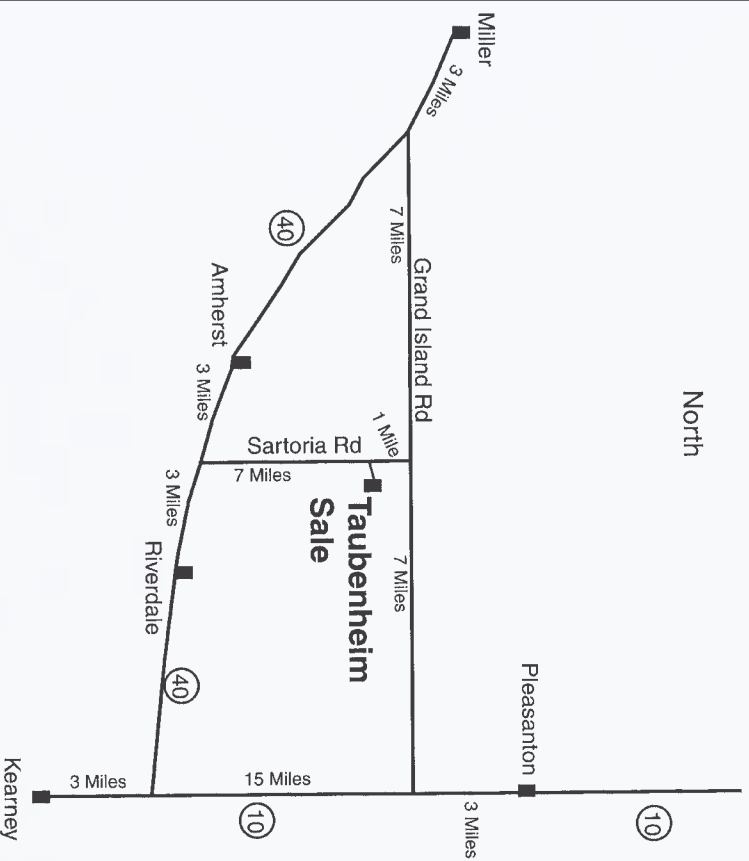
CED	BW	WW	YW	MK	TM	CEM	ST	YG	CW	REA	MB	FT	FPI
9	.40	71	107	18	53	7	-1	-.41	34	.94	.29	-.02	78.29

Eleven Habits of High-Return Producers

- \$ 1. Below average annual cow costs
- \$ 2. Lower than average calf breakeven prices
- \$ 3. Lower feed cost
- \$ 4. Lower interest expense (less debt)
- \$ 5. Lower general operating expense
- \$ 6. Higher averaging weaning weights
- \$ 7. Higher conception rates
- \$ 8. More pounds weaned per cow exposed
- \$ 9. High quality bulls with strong genetics
- \$ 10. Preventative herd health programs
- \$ 11. High quality pastures (maintain nutritional requirements of the cow)



Sale Facility at the Ranch



From: Amherst

3 Miles East on Hwy 40, 7 Miles North

Miller

3 Miles Southeast on Hwy 40

7 Miles East to Sartoria

Pleasanton

3 Miles South to Grand Island Rd

7 Miles West to Sartoria Rd

Taubenheim Gelbvieh
23685 Sartoria Road
Amherst, NE 68812

To:

Please bring this catalog with you to the sale!