

Taubenheim Gelbvieh

24th Annual
Production Sale



MONDAY
FEBRUARY 3, 2014
1:00 PM

SALE FACILITY AT THE RANCH
23685 SARTORIA RD. AMHERST, NE 68812

Cattlemen and Cattlewomen,

It is that time of the year again! We want to begin by saying hello from all of us at Taubenheim Gelbvieh. We would like to invite you to our 24th Annual Production Sale at the ranch on Monday, February 3, 2014.

The year started out tough and we didn't know what to expect. Timely rains kicked in and gave us adequate grass to get by. We took the calves to grass later than we ever have, and this set the calves back a little at weaning. However, we feel that the quality is still as deep as ever.

This year we are offering a powerful set of bulls with excellent muscle shape that will add pounds, ease of flesh, and longevity to any herd. This group of bulls is one of the most consistent sets from top to bottom that we have ever offered. Look for our bulls to add pounds at weaning, feed efficiency, and great maternal strength. We hope you are as pleased as we are with our group of bulls this year.

Calves are sired by a large selection of AI sires along with herdsires we have raised or purchased. Some of these sires include SLC Freedom, Gunnison, Connealy Consensus 7229, MYTTY In Focus, TAU Grid Topper 43T, and SAV Final Answer. We try to use many pedigrees for great outcross genetics to benefit our customers. This gives cattle producers a great opportunity to increase many traits in their cowherds.

Again this year we will be offering 30 bred heifers that have been ultra-sounded pregnant and 30 open females. These females are a great opportunity for you to take some of our genetics back to your own herd. You are welcome to stop by and view the bulls or females at your convenience--there will always be someone at the farm to assist you.

This year we will be exhibiting a pen of five balancer bulls, a pen of three purebred bulls, along with a balancer and purebred futurity bull and a couple of heifers at the National Western Stock Show in Denver. This year our pens are quite possibly the most complete sets we have had. If you come to Denver this year stop by and see us in the yards or on the hill.

We are very proud of the bulls and heifers and what they have to offer. There is something for every cattle operation in our offering. Whether you need black, red, calving ease, growth traits, we can satisfy any need. At Taubenheim Gelbvieh our goal has always been to satisfy the customer and help our costumers make a profit. We strive to accomplish this every year and we feel we have accomplished just this in our cattle selling this February.

We look forward to talking to you in the near future, and don't forget to mark your calendars for February 3rd.

THANK YOU,

The Taubenheims

Dale and Jeannette
308-826-4771

Mike, Renee,
Justin, Janelle, Tanner, Sydney, Seth, Kale
Mike: 308-233-4704 / Justin: 308-293-0692 / Tanner: 308-224-7196



**Welcome to the
24th Annual
Taubenheim Gelbvieh Production Sale
Monday, February 3, 2014 1:00 p.m. (CST)
Sale Facility At The Ranch
23685 Sartoria Rd • Amherst, NE 68812**

SELLING

97 Bulls 30 Open Females 30 Bred Females

HERD HEALTH

All bulls have had shots and been poured. Necessary health papers will be supplied with each sale animal.

TRUCKING

Free trucking on bulls of \$3,500 or more otherwise to central location.

All announcements from block take precedence over all written material.

Registration papers available.

Retaining 1/2 semen rights on all bulls.

Taubenheim Gelbvieh is not responsible for any accidents.

TAUBENHEIM GELBIEH FIRST SEASON BREEDING GUARANTEE

Buyers of all bulls selling for \$3,000 or more injured the first breeding season, will have credit at the next sale at the value of the purchase price minus salvage value. Contact Taubenheim Gelbvieh promptly so the decision to return the bull to Taubenheim Gelbvieh or sold by buyer may be made. Breeding season is defined as the 90 day period following the first turnout of the bulls.

In the event of death of a bull during the first breeding season, a credit of 50% of the sale price will be applied at the next sale for a bull.

If you have a problem and are in need of a replacement for any reason, please contact Taubenheim Gelbvieh as we will be glad to be of service.

Terms of Sale: Cash

BULL BUYERS

All bulls selling are eligible for free board until April 1, 2014

**In Case of Inclement Weather, Call Sale Day Phone
or Listen to KRVN for Information**

Livestock Press Representatives

High Plains Journal..... Rod Swaford, 620-338-7244

Livestock Plus Jay Elfeldt, 308-293-3049

Midwest Messenger..... Chris Beutler, 402-380-8244

Motel Accommodations

Microtel Inn..... 308-698-3003

Hampton Inn 308-234-3400

DVAuction
Broadcasting Real-Time Auctions
www.DVAuction.com

AUCTIONEER: Tracy Harl, 2420 N. 2nd Avenue, Hastings, NE 68901 402-461-3575

Join us for complimentary sale day beef lunch cooked on a Traeger!

Sale Day Phone: 308-826-4771 / Cell: 308-627-5054/308-222-0138/308-233-4704

Jim Blackwell will be taking bids again at the above phone numbers.

FOR INFORMATION CONTACT:

Dale Taubenheim
23685 Sartoria Rd., Amherst, NE 68812
308-826-4771 or 308-222-0138
Email: dtaubenheim@aol.com

Mike Taubenheim
19035 Grand Island Rd., Amherst, NE 68812
308-233-4704
Justin: 308-293-0692 j_tauby5@hotmail.com

www.taubenheimgelbvieh.com

DVAuction

www.dvauction.com

Watch & Bid online for FREE!

Can't make the sale?

Let DVAuction bring the sale to you!

Busy during the sale?

Let DVAuction represent your bid!

Visit www.dvauction.com and Register!

It's as easy as 1, 2, 3...

1. Create an account at www.dvauction.com under the "create new account" tab
2. Apply for bidding by clicking "apply for bidding" in the upper left corner of your screen, at least 24 hours prior to the auction
3. Tune into the sale and make your purchases!

For General Questions Please Contact Our Office:
(402) 316-5460 or support@dvauction.com

*High Speed Internet Access Required

PUREBRED POLLED RED BULL

A SLC FREEDOM 178F ET

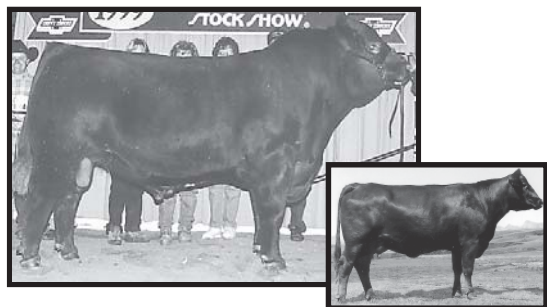
Calved: February 26, 1996 ★ Tattoo: 178F

Birth Weight: 88 Adj. 205-day Wt: 599 Adj. 365-day Wt: 1196

| | |
|--------------------------------|------------------------------|
| GLT Sensation's Day 21Y | LAR Mr Sensation 506S |
| VAA LEACHMAN NEW DAY 205B | IHF Miss Ing-Ho 29S |
| VAA 023Z | ATM Tejas Rolls Roych 868 |
| | VAA 790W |
| BB Mr Forkas 1S (JSE M2) | Bold Forkus 9807297 |
| BB MISS 61Y | Hope Valley Klara |
| BB Bell Orchid | CRO Willox Belgrade 11 Miner |
| | BB Gold Star 107R |

—INDIVIDUAL EPDs—

CE: 106 BW: -0.4 WW: 40 YW: 82 Milk: 9 TMAT: 29 Gest: -5.8 CED: 105
Homozygous polled deep dark red. Another out cross purchased to use on our close net bloodlines. 1999 National Champion Gelbvieh bull in Denver. True calving ease, will really shorten gestation length. Dam has sold over \$150,000 worth of progeny to date. Extremely wide and structurally correct. Unlimited genetic potential.



SLC FREEDOM and Dam

3/8 POLLED BLACK BULL

B TAU MR GRID TOPPER 43T

AMGV1036179 ★ Calved: February 2, 2007 ★ Tattoo: 43T

Birth Weight: 90 Adj. 205-day Wt: 591

| | |
|--------------------|------------------|
| TC GRID TOPPER 355 | G A R Grid Maker |
| | TC Pride 8067 |
| TAU MISS TY 3130N | TAU T G Ty 313L |
| | TAU Freedom 102L |

—INDIVIDUAL EPDs—

CE: 105 BW: -.3 WW: 42 YW: 87 Milk: 9 TMAT: 30 Gest: -2.2 CED: 103
43T was a member of our 2008 Reserve National Champion Pen of 3 Balancers. He has really been doing the job for us, his progeny are flawless in their structure and balanced in their type, with plenty of rib and muscle. He makes them right.



TAU Mr Grid Topper 43T

PUREBRED POLLED BLACK BULL

C HYEK BLACK IMPACT 3960N

AMGV844875 ★ Calved: February 7, 2003 ★ Tattoo: 3960N

| | |
|--------------------------|--------------------------|
| HYEK BLACK IMPULSE 1296L | ELK CK Scorpion 2343H ET |
| | OAKK Valley Lady 296J |
| HYEK BLACK RUBY 9604J | FHG Flying H Extra 150D |
| | HYEK Dottie F6048 |

—INDIVIDUAL EPDs—

CE: 106 BW: -1 WW: 41 YW: 68 Milk: 15 TMAT: 36 Gest: -5.9 CED: 98
HYEK Black Impact is a bull that we turned to to make females and add power to our herd, and he most certainly has done that. He makes them functional and we will use him for years to come because of that fact.

PUREBRED POLLED BLACK BULL

D GMCC RUPPLE GUNNISON N31

AMGV854851 ★ Calved: January 12, 2003 ★ Tattoo: GMCCN31

Birth Weight: 86 Adj. 205-day Wt: 849 Adj. 365-day Wt: 1178

| | |
|------------------------------|-----------------------------|
| VRT RUP LAZY TV HOTFUDGEJ357 | WAC Fullback 011G |
| | VRT F091 |
| RUP RUPPLE 919L | GKT Bud 11G |
| | RUP Ruppel J Precision 715J |

—INDIVIDUAL EPDs—

CE: 107 BW: 0.7 WW: 37 YW: 63 Milk: 19 TMAT: 38 Gest: -0.4 CED: 102
Homozygous black and homozygous polled herd sire we purchased from Corry Ruppel, to use as an outcross in our herd, and for cattlemen who have been using our bulls for several years. Gunnison is doing a great job of breeding desirable traits as you will see his calves come easy and are excellent in giving fleshing ability, muscle, and depth of rib. You will appreciate his calves sale day.

PUREBRED POLLED BLACK BULL

E S A V FINAL ANSWER 0035

13592905 ★ Calved: February 22, 2000 ★ Tattoo: 0035

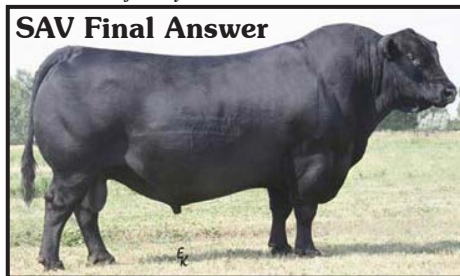
Birth Weight: 69 Adj. 205-day Wt: 843 Adj. 365-day Wt: 1360

| | |
|--------------------|----------------------------|
| SITZ TRAVELER 8180 | G D A R Traveler 71 |
| | Sitz Everelda Entense 1137 |
| S A V EMULOUS 8145 | Bon View Bando 598 |
| | S A V Sky Emulous 2124 |

—INDIVIDUAL EPDs—

BW: -1.0 WW: 61 YW: 104 Milk: 19

Final Answer is quite likely the most well rounded proven A.I. sire in existence today with his combination of low birth weight, good growth to a year, top 4% RE and unmatched maternal and fertility.



SAV Final Answer

PUREBRED POLLED BLACK BULL

F MYTTY IN FOCUS 109

AAA13880818 ★ Calved: February 18, 2001 ★ Tattoo: 109

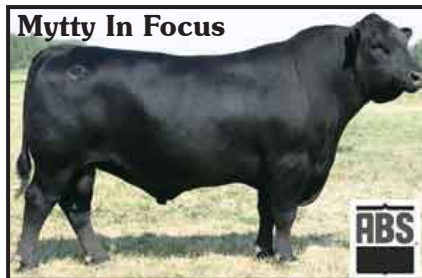
Birth Weight: 77 Adj. 205-day Wt: 766

| | |
|--------------------|-----------------------|
| SAF FOCUS OF ER | SAF Fame |
| | GDAR Forever Lady 246 |
| MYTTY COUNTESS 906 | Sitz Alliance 6595 |
| | Baldrige Countess 357 |

—INDIVIDUAL EPDs—

BW: -1.4 WW: 55 YW: 99 Milk: 25

Mytty In Focus is simply a cowman's bull. He was number one for registrations in the Angus breed in 2008, 2009, and 2010. In Focus is a bull that we have turned to to get calving ease in a consistent package. In Focus works for us, so let his sons go to work for you.



Mytty In Focus

PUREBRED POLLED BLACK BULL

C HYEK BLACK IMPACT 3960N

AMGV844875 ★ Calved: February 7, 2003 ★ Tattoo: 3960N

| | |
|--------------------------|--------------------------|
| HYEK BLACK IMPULSE 1296L | ELK CK Scorpion 2343H ET |
| | OAKK Valley Lady 296J |
| HYEK BLACK RUBY 9604J | FHG Flying H Extra 150D |
| | HYEK Dottie F6048 |

—INDIVIDUAL EPDs—

CE: 106 BW: -1 WW: 41 YW: 68 Milk: 15 TMAT: 36 Gest: -5.9 CED: 98
HYEK Black Impact is a bull that we turned to to make females and add power to our herd, and he most certainly has done that. He makes them functional and we will use him for years to come because of that fact.



HYEK Black Impact

REFERENCE SIRE

75% PUREBRED HOMOZYGOUS BLACK POLLED BULL

Lot 1 *TAU MR SAM 5A*

★ Calved: January 21, 2013 ★ Tattoo: TAU 5A ★ Reg. #: AMGV1250347

Birth Weight: 75 Adj. 205-day Wt: 731

KHR Sam Spade 02S
VRT LAZY TV SAM U451
 VRT Lazy TV Ms Fullback L643

TAU Mr Krugerrand 70M 130P
TAU MS KRUGGERAND 130P 127Y
 TAU Ms Hot Fudge 9133W

| CE | BW | WW | YW | Milk | TM | CED |
|----|-----|----|-----|------|----|-----|
| 13 | 0.0 | 72 | 105 | 29 | 64 | 9.4 |

5A- Homozygous Black son of the popular calving ease sire Sam and out of a great Kruggerand 130p first calf heifer. This guy is extremely powerful, wide, and expressive. He has a tremendous spread starting at 75 pounds at birth and weaning at 731 pounds.



Lot 2

75% PUREBRED BLACK DOUBLE POLLED BULL

Lot 3 *TAU MR GUNNISON 51A*

★ Calved: February 4, 2013 ★ Tattoo: TAU 51A ★ Reg. #: AMGV1268330

Birth Weight: 80 Adj. 205-day Wt: 636

VRT Rup Lazy TV HotfudgeJ357
GMCC RUPPLE GUNNISON N31
 RUP Ruppel 919L

Mr Sleepy 204P
TAU CHERRY PIE 1116Y
 TAU Miss Rodeo Drive 321N

| CE | BW | WW | YW | Milk | TM | CED |
|----|-----|----|----|------|----|-----|
| 13 | 2.1 | 57 | 83 | 27 | 58 | 7 |

51A-Black, Double Polled son of Ruppel Gunnison that is extremely powerfully constructed. This calf is one that we like for his skeletal build and tremendous muscle shape and dimension.

75% PUREBRED HOMOZYGOUS BLACK DOUBLE POLLED BULL

Lot 5 *TAU MR GUNNISON 65A*

★ Calved: February 7, 2013 ★ Tattoo: TAU 65A ★ Reg. #: AMGV1250458

Birth Weight: 78 Adj. 205-day Wt: 672

VRT Rup Lazy TV HotfudgeJ357
GMCC RUPPLE GUNNISON N31
 RUP Ruppel 919L

S A V Final Answer 0035
TAU MS FINAL ANSWER 109Y
 TAU Ms Solution 9140W

| CE | BW | WW | YW | Milk | TM | CED |
|----|-----|----|----|------|----|-----|
| 16 | 0.7 | 67 | 99 | 26 | 59 | 7.5 |

65A-Homozygous Black, Double Polled son of Gunnison and out of a first calf Final Answer daughter. 65A was born at 78 pounds and this makes him a calving ease sire that is safe on heifers. Add in his parents maternal ability and he is a must find sale day.



Lot 1

94% PUREBRED HOMOZYGOUS BLACK HOMOZYGOUS POLLED BULL

Lot 2 *TAU UNITAS 19A ET*

★ Calved: January 26, 2013 ★ Tattoo: TAU 19A ★ Reg. #: AMGV1259231

Birth Weight: 89 Adj. 205-day Wt: 688

HYEK Black Impulse 1296L
HYEK BLACK IMPACT 3960N
 HYEK Black Ruby 9604J

BABR Tsunami 447P
TAU MISS TSUNAMI 880U
 TAU Miss Rodeo Drive 321N

| CE | BW | WW | YW | Milk | TM | CED |
|----|-----|----|----|------|----|-----|
| 8 | 1.4 | 64 | 85 | 26 | 58 | 0.6 |

19A- Homozygous Black, Homozygous Polled, this embryo calf is extremely stout and powerful. Bold ribbed, impressive from behind, and wide at the ground. He's backed by HYEK Black Impact and out of a great Tsunami donor cow.

75% PUREBRED BLACK DOUBLE POLLED BULL

Lot 4 *TAU MR HONOR ROLL 61A*

★ Calved: February 6, 2013 ★ Tattoo: TAU 61A ★ Reg. #: AMGV1250335

Birth Weight: 85 Adj. 205-day Wt: 715

JCGR Bar GT Louie 2J
SGRI HONOR ROLL S232
 SGRI K067

TAU Mr Krugerrand 70M 130P
TAU CHERRY BOMB 0115X
 TAU Miss Bon View 391N

| CE | BW | WW | YW | Milk | TM | CED |
|----|-----|----|-----|------|----|-----|
| 7 | 2.2 | 73 | 102 | 27 | 63 | 8.8 |

61A-Black, Double Polled son of our herdsire Honor Roll out of a big and stout second calf heifer. 61A weaned off the cow at 715 pounds making him a good growth option.

94% PUREBRED HOMOZYGOUS BLACK DOUBLE POLLED BULL

Lot 6 *TAU MR WILD BILL 78A*

★ Calved: February 8, 2013 ★ Tattoo: TAU 78A ★ Reg. #: AMGV1250474

Birth Weight: 84 Adj. 205-day Wt: 710

ELK CK Crazy Horse 138P
ELK CK WILD BILL 42U
 Job Danell Greta 42L ET

TAU Gunnison 106R
TAU MS GUNNISON 106R 0146X
 TAU Ms Sleepy 204P 7130T

| CE | BW | WW | YW | Milk | TM | CED |
|----|-----|----|----|------|----|-----|
| 11 | 1.7 | 63 | 94 | 27 | 59 | 7.3 |

78A-Homozygous Black, Double Polled. 78A is a larger framed and longer sided son of Wild Bill, and with a 710 pound weaning weight he is sure to add pounds to his sons and daughters.

94% PUREBRED DOUBLE BLACK HOMOZYGOUS POLLED BULL

Lot 7 ***TAU JUMPMAN 23A ET***

★ Calved: January 28, 2013 ★ Tattoo: TAU 23A ★ Reg. #: AMGV1259245

Birth Weight: 87 Adj. 205-day Wt: 739

HYEK Black Impulse 1296L
HYEK BLACK IMPACT 3960N
 HYEK Black Ruby 9604J

BABR Tsunami 447P
TAU MISS TSUNAMI 880U
 TAU Miss Rodeo Drive 321N

| CE | BW | WW | YW | Milk | TM | CED |
|----|-----|----|----|------|----|-----|
| 8 | 1.4 | 64 | 85 | 26 | 58 | 0.6 |

23A- Double Black, Homozygous Polled, here is another embryo calf out of HYEK Black Impact and the Tsunami donor cow. Ton's of power and mass in this herdsire prospect and he couples it with a look that's second to none. Don't miss this one on sale day. He is entered in the Purebred Futurity at the Stock Show.



Lot 8

75% PUREBRED BLACK DOUBLE POLLED BULL

Lot 9 ***TAU MR TOP CROP 113A***

★ Calved: February 11, 2013 ★ Tattoo: TAU 113A ★ Reg. #: AMGV1256144

Birth Weight: 85 Adj. 205-day Wt: 661

TAU Mr Grid Topper 43T
TAU TOP GUN 292Y
 TAU Ms N Bar Ext 4153P

Sept Rodeo Drive J14
TAU MISS RODEO DRIVE 379N
 TAU Ms Pepper Shaker 603F

| CE | BW | WW | YW | Milk | TM | CED |
|----|-----|----|----|------|----|-----|
| 6 | 0.8 | 64 | 84 | 19 | 51 | 8.8 |

113A-Black, Double Polled this stout made son of Top Gun 292Y is out of a 10 year old Rodeo Drive daughter. 113A is long and extended and should add pounds to a calf crop.

94% PUREBRED HOMOZYGOUS BLACK DOUBLE POLLED BULL

Lot 11 ***TAU HORNSBY 118A ET***

★ Calved: February 12, 2013 ★ Tattoo: TAU 118A ★ Reg. #: AMGV1256177

Birth Weight: 82 Adj. 205-day Wt: 769

HYEK Black Impulse 1296L
HYEK BLACK IMPACT 3960N
 HYEK Black Ruby 9604J

GMCC Ruppel Gunnison N31
TAU MS GUNNISON 7211T ET
 TAU Ms Dr P of 516E 716G

| CE | BW | WW | YW | Milk | TM | CED |
|----|-----|----|----|------|----|------|
| 12 | 1.6 | 70 | 97 | 30 | 65 | -1.7 |

118A- Homozygous Black, Double Polled, 118A is another combination of HYEK Black Impact and 7211T. This is one of the growthiest calves of this flush. If you are looking for a little extra length, and frame in a purebred then this is the one. As an added bonus he had a 769 pound weaning weight.



Lot 7

75% PUREBRED BLACK HOMOZYGOUS POLLED BULL

Lot 8 ***TAU GEHRIG 64A***

★ Calved: February 6, 2013 ★ Tattoo: TAU 64A ★ Reg. #: AMGV1256253

Birth Weight: 86 Adj. 205-day Wt: 751

Kobalt 82U ET
TNTF DARK HORSE 061W
 Alyiah 3161N

SLC Freedom 178F ET
TAU MS FREEDOM 811U
 Ms Ambush 6131S

| CE | BW | WW | YW | Milk | TM | CED |
|----|-----|----|----|------|----|-----|
| 6 | 1.0 | 67 | 97 | 28 | 62 | 7 |

64A- Black, Homozygous Polled son of TNTF Darkhorse which is an outcross sire we decided to use in our program last year. This calf is big footed, wide made and deep bodied. There is also a lot of growth in this guy as he weaned off at 751 pounds.

88% PUREBRED RED DOUBLE POLLED BULL

Lot 10 ***TAU MR HERO 117A***

★ Calved: February 12, 2013 ★ Tattoo: TAU 117A ★ Reg. #: AMGV1256152

Birth Weight: 84 Adj. 205-day Wt: 699

JCGR Bar GT Louie 2J
SGRI HONOR ROLL S232
 SGRI K067

GMCC Ruppel Gunnison N31
TAU MS GUNNISON 0132X
 TAU Miss Vision 3210N

| CE | BW | WW | YW | Milk | TM | CED |
|----|-----|----|----|------|----|-----|
| 10 | 1.9 | 68 | 89 | 27 | 61 | 7.3 |

117A-Red (Non-diluter), Double Polled son of Honor Roll and out of an impressive bob-eared Gunnison second calf heifer. 117A is moderate framed and powerfully constructed, and ratioed 107 for weaning weight.

94% PUREBRED HOMOZYGOUS BLACK DOUBLE POLLED BULL

Lot 12 ***TAU MR NORTH WIND 125A***

★ Calved: February 12, 2013 ★ Tattoo: TAU 125A ★ Reg. #: AMGV1256360

Birth Weight: 84 Adj. 205-day Wt: 685

EGL Northern Exposure J171
EGL NORTHERN WIND P068 ET
 EGL Olivia J811 ET

SLC Freedom 178F ET
TAU MISS FREEDOM 718T
 TAU Onix 5143R

| CE | BW | WW | YW | Milk | TM | CED |
|----|-----|----|----|------|----|-----|
| 3 | 1.6 | 65 | 87 | 19 | 52 | 5.3 |

125A-Homozygous Black, Double Polled potential herdsire that is out of North Wind and goes back to Freedom on the maternal side. 125A is extremely wide made and expressively muscled.

PUREBRED GELBVIEH

94% PUREBRED HOMOZYGOUS BLACK HOMOZYGOUS POLLED BULL

Lot 13 ***TAU BOGGS 126A ET***

★ Calved: February 12, 2013 ★ Tattoo: TAU 126A ★ Reg. #: AMGV1256362

Birth Weight: 84 Adj. 205-day Wt: 722

HYEK Black Impulse 1296L
HYEK BLACK IMPACT 3960N
 HYEK Black Ruby 9604J

GMCC Ruppel Gunnison N31
TAU MS GUNNISON 7211T ET
 TAU Ms Dr P of 516E 716G

| CE | BW | WW | YW | Milk | TM | CED |
|----|-----|----|----|------|----|------|
| 12 | 1.3 | 67 | 97 | 30 | 64 | -1.7 |

126A- Homozygous Black, Homozygous Polled son of HYEK Black Impact and our Gunnison donor 7211T. 126A is one of the better-looking embryo calves, that is still extremely expressive and wide. This meat wagon will be making the trip to Denver with us.

94% PUREBRED HOMOZYGOUS BLACK POLLED BULL

Lot 14 ***TAU MR USA AMERICA 129A ET***

★ Calved: February 13, 2013 ★ Tattoo: TAU 129A ★ Reg. #: AMGV1256365

Birth Weight: 84 Adj. 205-day Wt: 625

HYEK Black Impulse 1296L
HYEK BLACK IMPACT 3960N
 HYEK Black Ruby 9604J

GMCC Ruppel Gunnison N31
TAU MS GUNNISON 7211T ET
 TAU Ms Dr P of 516E 716G

| CE | BW | WW | YW | Milk | TM | CED |
|----|-----|----|----|------|----|------|
| 12 | 1.6 | 70 | 97 | 30 | 65 | -1.7 |

129A-Homozygous Black, Double Polled. 129A is a flushmate to our pen of three bulls at Denver, and he is above breed average for weaning and yearling. Don't miss this potential sire sale day.

94% PUREBRED HOMOZYGOUS BLACK DOUBLE POLLED BULL

Lot 16 ***TAU EXPRESS 134A ET***

★ Calved: February 13, 2013 ★ Tattoo: TAU 134A ★ Reg. #: AMGV1256374

Birth Weight: 84 Adj. 205-day Wt: 787

HYEK Black Impulse 1296L
HYEK BLACK IMPACT 3960N
 HYEK Black Ruby 9604J

GMCC Ruppel Gunnison N31
TAU MS GUNNISON 7211T ET
 TAU Ms Dr P of 516E 716G

| CE | BW | WW | YW | Milk | TM | CED |
|----|-----|----|----|------|----|------|
| 12 | 1.6 | 70 | 97 | 30 | 65 | -1.7 |

134A- Homozygous Black, Double Polled son of HYEK Black Impact and the donor 7211T. He weaned off the cow at 787 pounds. This guy offers the complete package. Extremely heavy muscled and stout featured, and he couples this with tremendous eye appeal. 134A is the front pasture kind and there's no question he is a true herdsire prospect. Check him out at the stock show in Denver.

88% PUREBRED BLACK DOUBLE POLLED BULL

Lot 17 ***TAU MR TSUNAMI 135A***

★ Calved: February 13, 2013 ★ Tattoo: TAU 135A ★ Reg. #: AMGV1256375

Birth Weight: 90 Adj. 205-day Wt: 703

SSL Platinum
BABR TSUNAMI 447P
 BABR 0247K

GMCC Ruppel Gunnison N31
TAU MS GUNNISON 953W
 TAU Miss Lutton 751T

| CE | BW | WW | YW | Milk | TM | CED |
|----|-----|----|----|------|----|-----|
| 10 | 1.2 | 63 | 85 | 27 | 59 | 7.8 |

135A-Black, Double Polled son of Tsunami and out of a good hipped powerfully made Gunnison daughter. 135A posted a 703 pound weaning weight and is certainly sound and powerful.



Lot 13

75% PUREBRED HOMOZYGOUS BLACK DOUBLE POLLED BULL

Lot 15 ***TAU MR TSUNAMI 130A***

★ Calved: February 13, 2013 ★ Tattoo: TAU 130A ★ Reg. #: AMGV1256366

Birth Weight: 86 Adj. 205-day Wt: 596

SSL Platinum
BABR TSUNAMI 447P
 BABR 0247K

Mytty In Focus
TAU MS IN FOCUS 911W
 TAU Ms Freedom 718T

| CE | BW | WW | YW | Milk | TM | CED |
|----|-----|----|----|------|----|-----|
| 10 | 0.7 | 66 | 92 | 22 | 56 | 8.6 |

130A-Homozygous Black, Double Polled son of Tsunami and out of a powerful and maternal In Focus daughter. 130A will definitely be a great maternal option, and should make some great replacements.



Lot 16

88% PUREBRED HOMOZYGOUS BLACK DOUBLE POLLED BULL

Lot 18 ***TAU MR GUNNISON 141A***

★ Calved: February 14, 2013 ★ Tattoo: TAU 141A ★ Reg. #: AMGV1256387

Birth Weight: 88 Adj. 205-day Wt: 703

VRT Rup Lazy TV HotfudgeJ357
GMCC RUPPLE GUNNISON N31
 RUP Ruppel 919L

BABR Tsunami 447P
TAU MS TSUNAMI 9173W
 TAU Krugerrand 563R

| CE | BW | WW | YW | Milk | TM | CED |
|----|-----|----|----|------|----|-----|
| 12 | 1.7 | 62 | 85 | 28 | 59 | 6.5 |

141A-Homozygous Black, Double Polled son of Gunnison that goes back to Tsunami on the dam's side. Above breed average for milk and maternal. Both sides of this pedigree will put replacements in the pen.

75% BLACK DOUBLE POLLED BULL

Lot 19 **TAU MR GUNNISON 106R 153A**

★ Calved: February 16, 2013 ★ Tattoo: TAU 153A ★ Reg. #: AMGV1256412

Birth Weight: 91 Adj. 205-day Wt: 719

GMCC Ruppel Gunnison N31
TAU GUNNISON 106R
TAU Miss Rodeo Drive 220M

TC Grid Topper 355
TAU MS GRID TOPPER 0168X
TAU Ms Gunnison 657S

| CE | BW | WW | YW | Milk | TM | CED |
|----|-----|----|----|------|----|-----|
| 11 | 1.7 | 67 | 95 | 21 | 55 | 4.6 |

153A-Black, Double Polled. 153A posted an impressive 719 pound weaning weight out of a second calf heifer and Gunnison 106R. 153A packs a large and growthy punch in a moderate framed package.

88% PUREBRED BLACK POLLED BULL

Lot 21 **TAU MR GUNNISON 106R 158A**

★ Calved: February 16, 2013 ★ Tattoo: TAU 158A ★ Reg. #: AMGV1256421

Birth Weight: 80 Adj. 205-day Wt: 699

GMCC Ruppel Gunnison N31
TAU GUNNISON 106R
TAU Miss Rodeo Drive 220M

SGRI Honor Roll S232
TAU MS HONOR ROLL 0226X
TAU Ms Glacier Chateau 4140P

| CE | BW | WW | YW | Milk | TM | CED |
|----|-----|----|----|------|----|-----|
| 9 | 2.0 | 71 | 92 | 21 | 56 | 1.7 |

158A- 158A is a grandson of Gunnison that goes back to Honor Roll on the maternal side. 158A is big boned, wide made and massive. He is sure to add pounds to a set of calves.



Lot 22

88% PUREBRED HOMOZYGOUS BLACK DOUBLE POLLED BULL

Lot 23 **TAU MR GUNNISON 230U 167A**

★ Calved: February 18, 2013 ★ Tattoo: TAU 167A ★ Reg. #: AMGV1256460

Birth Weight: 84 Adj. 205-day Wt: 698

TAU Gunnison 106R
TAU MR GUNNISON 106R 230U
TAU Miss Power Pac 13F 333N

SGRI Honor Roll S232
TAU MS HONOR ROLL 9124W
TAU Ms New Design 1407 620S

| CE | BW | WW | YW | Milk | TM | CED |
|----|-----|----|----|------|----|-----|
| 8 | 2.2 | 65 | 93 | 27 | 59 | 6.4 |

167A-Homozygous Black, Double Polled powerful son of 230U and backed by a stout made Honor Roll female that had an individual ww ratio of 112. This calf is extremely wide made and powerfully constructed. 167A should power up a calf crop.

94% PUREBRED HOMOZYGOUS BLACK DOUBLE POLLED BULL

Lot 20 **TAU MR IMPACT 156A ET**

★ Calved: February 16, 2013 ★ Tattoo: TAU 156A ★ Reg. #: AMGV1256416

Birth Weight: 89 Adj. 205-day Wt: 692

HYEK Black Impulse 1296L
HYEK BLACK IMPACT 3960N
HYEK Black Ruby 9604J

GMCC Ruppel Gunnison N31
TAU MS GUNNISON 7211T ET
TAU Ms Dr P of 516E 716G

| CE | BW | WW | YW | Milk | TM | CED |
|----|-----|----|----|------|----|------|
| 12 | 1.6 | 70 | 97 | 30 | 65 | -1.7 |

156A-Homozygous Black, Double Polled. 156A is another flushmate to our Denver pen of 3 purebreds. He is long bodied, powerfully constructed, and posted an impressive weaning weight.



Lot 21

94% PUREBRED HOMOZYGOUS BLACK HOMOZYGOUS POLLED BULL

Lot 22 **TAU DIMAGGIO 161A ET**

★ Calved: February 17, 2013 ★ Tattoo: TAU 161A ★ Reg. #: AMGV1256432

Birth Weight: 83 Adj. 205-day Wt: 716

HYEK Black Impulse 1296L
HYEK BLACK IMPACT 3960N
HYEK Black Ruby 9604J

GMCC Ruppel Gunnison N31
TAU MS GUNNISON 7211T ET
TAU Ms Dr P of 516E 716G

| CE | BW | WW | YW | Milk | TM | CED |
|----|-----|----|----|------|----|------|
| 12 | 1.6 | 70 | 97 | 30 | 65 | -1.7 |

161A- Homozygous Black, Homozygous Polled son of HYEK Black Impact and our donor cow 7211T. 161A is a long and extended bull that is level in his lines and sound structured. This calf is a very versatile one that can excel in any operation.

75% BLACK DOUBLE POLLED BULL

Lot 24 **TAU MR HOMERUN 170A**

★ Calved: February 19, 2013 ★ Tattoo: TAU 170A ★ Reg. #: AMGV1256467

Birth Weight: 84 Adj. 205-day Wt: 730

ELK CK Crazy Horse 138P
ELK CK WILD BILL 42U
Job Danell Greta 42L ET

DLW Mr Kingston 106P
DLW MS KING BALANCE 0105X
DLW 857U

| CE | BW | WW | YW | Milk | TM | CED |
|----|-----|----|----|------|----|-----|
| 10 | 0.5 | 66 | 98 | 25 | 58 | 8.0 |

170A-Black, Double Polled son of Wild Bill and out of a great second calf heifer. This calf has a ton of growth and power and it shows in his 730 pound weaning weight and chart figures.

PUREBRED GELBVIEWH & BALANCERS

75% RED DOUBLE POLLED BULL

Lot 25 **TAU MR GUNNISON 230U 174A**

★ Calved: February 20, 2013 ★ Tattoo: TAU 174A ★ Reg. #: AMGV1256474

Birth Weight: 80 Adj. 205-day Wt: 658

TAU Gunnison 106R
TAU MR GUNNISON 106R 230U
 TAU Miss Power Pac 13F 333N

TAU Krugerrand 70M
TAU MS KRUGERRAND 70M 7162T
 TAU Miss Freedom 4132P

| CE | BW | WW | YW | Milk | TM | CED |
|----|-----|----|----|------|----|-----|
| 9 | 1.3 | 60 | 86 | 20 | 50 | 2.7 |

174A-Red (Non-Diluter), Double Polled son of Gunnison 230U that's out of a great uddered 70M daughter. If you're looking for eye appeal with a ton of power in a red bull here it is. This guy is the front pasture kind.

88% PUREBRED HOMOZYGOUS BLACK DOUBLE POLLED BULL

Lot 27 **TAU MR TSUNAMI 181A**

★ Calved: February 21, 2013 ★ Tattoo: TAU 181A ★ Reg. #: AMGV1256482

Birth Weight: 85 Adj. 205-day Wt: 720

SSL Platinum
BABR TSUNAMI 447P
 BABR 0247K

SGRI Honor Roll S232
TAU MS HONOR ROLL 962W
 TAU Cherokee 555R

| CE | BW | WW | YW | Milk | TM | CED |
|----|-----|----|----|------|----|-----|
| 8 | 1.9 | 69 | 91 | 26 | 60 | 7.3 |

181A-Homozygous Black, Double Polled son of Tsunami that comes from a great cow family. 181A is a larger framed and longer bodied bull that is extremely growthy.

75% HOMOZYGOUS BLACK DOUBLE POLLED BULL

Lot 29 **TAU MR BILLY BOB 188A**

★ Calved: February 22, 2013 ★ Tattoo: TAU 188A ★ Reg. #: AMGV1256491

Birth Weight: 80 Adj. 205-day Wt: 713

ELK CK Crazy Horse 138P
ELK CK WILD BILL 42U
 Job Danell Greta 42L ET

TAU Tuned In 55T
TAU MS TUNED IN 084X
 TAU Ms 6807 532R

| CE | BW | WW | YW | Milk | TM | CED |
|----|-----|----|-----|------|----|-----|
| 10 | 1.6 | 68 | 108 | 21 | 55 | 7.7 |

188A-Homozygous Black, Double Polled son of Wild Bill that's out of an attractive Tuned In Daughter. With a 713 pound weaning there is sure a lot of growth and performance in this potential sire.

94% PUREBRED HOMOZYGOUS BLACK HOMOZYGOUS POLLED BULL

Lot 31 **TAU RUTH 103A ET**

★ Calved: February 10, 2013 ★ Tattoo: TAU 103A ★ Reg. #: AMGV1256086

Birth Weight: 88 Adj. 205-day Wt: 760

HYEK Black Impulse 1296L
HYEK BLACK IMPACT 3960N
 HYEK Black Ruby 9604J

GMCC Ruppel Gunnison N31
TAU MS GUNNISON 7211T ET
 TAU Ms Dr P of 516E 716G

| CE | BW | WW | YW | Milk | TM | CED |
|----|-----|----|----|------|----|------|
| 12 | 1.6 | 70 | 97 | 30 | 65 | -1.7 |

103A- Homozygous Black, Homozygous Polled son of HYEK Black Impact and out of our great Gunnison donor 7211T. This calf is long bodied, bold ribbed, and he weaned off the cow at 760 pounds.

88% PUREBRED HOMOZYGOUS BLACK DOUBLE POLLED BULL

Lot 26 **TAU MR NORTHWIND 175A**

★ Calved: February 21, 2013 ★ Tattoo: TAU 175A ★ Reg. #: AMGV1256477

Birth Weight: 82 Adj. 205-day Wt: 670

EGL Northern Exposure J171
EGL NORTHERN WIND P068 ET
 EGL Olivia J811 ET

OGSG Master Onix 247M
TAU MS ONIX 6119S
 TAU Ms 36S of 351C 926J

| CE | BW | WW | YW | Milk | TM | CED |
|----|-----|----|----|------|----|-----|
| 2 | 1.8 | 58 | 78 | 22 | 51 | 5.6 |

175A-Homozygous Black, Double Polled son of Northern Wind out of a Onix daughter that was named a dam of merit this year. Plenty of power and stoutness in this guy.

75% BLACK DOUBLE POLLED BULL

Lot 28 **TAU MR DR PEPPER 185A**

★ Calved: February 22, 2013 ★ Tattoo: TAU 185A ★ Reg. #: AMGV1256486

Birth Weight: 86 Adj. 205-day Wt: 655

DCJ Mr Pepper Shaker
TAU DR PEPPER 29D
 TAU Bar 055Z

TAU Gunnison 106R
TAU MS GUNNISON 106R 8148U
 TAU Ms New Design 878 308

| CE | BW | WW | YW | Milk | TM | CED |
|----|-----|----|----|------|----|-----|
| 9 | 1.1 | 58 | 83 | 23 | 52 | 6.7 |

185A-Black, Double Polled throwback son of Dr. Pepper out of an old show heifer. Dr. Pepper changed our herd by adding power and dimension and the same this goes for this stout son.

88% HOMOZYGOUS BLACK DOUBLE POLLED BULL

Lot 30 **TAU MR BILLY BOB 217A**

★ Calved: February 26, 2013 ★ Tattoo: TAU 217A ★ Reg. #: AMGV1256544

Birth Weight: 90 Adj. 205-day Wt: 726

ELK CK Crazy Horse 138P
ELK CK WILD BILL 42U
 Job Danell Greta 42L ET

GMCC Ruppel Gunnison N31
TAU MS GUNNISON 929W
 TAU Miss Alliance 6595 797T

| CE | BW | WW | YW | Milk | TM | CED |
|----|-----|----|----|------|----|-----|
| 12 | 1.3 | 66 | 98 | 29 | 62 | 8.9 |

217A-Homozygous Black, Double Polled son of Wild Bill and out of a Gunnison daughter. 217A weaned off the cow at 726 pounds. He is a larger framed bull that is extremely growthy and powerful.

Gelbvieh-Cross Feeder Cattle

According to a survey of feedlot managers and cattle buyers representing 4.5 million fed cattle, the top two advantages of Gelbvieh-cross feeder cattle are growth rate and feed efficient. These are the same traits that cattle feeders list as most important to the profitability of their feedyards. Cattle feeders also rave about Gelbvieh's excellent disposition. Good disposition means cattle begin eating quickly, experience less sickness and put more energy toward efficient gain, while providing a safe environment for feedyard employees.

50% HOMOZYGOUS BLACK POLLED BULL

Lot 32 ***TAU MR FINAL ANSWER 1A***

★ Calved: January 18, 2013 ★ Tattoo: TAU 1A ★ Reg. #: AMGV1256105

Birth Weight: 75 Adj. 205-day Wt: 740

Sitz Traveler 8180

S A V FINAL ANSWER 0035

S A V Emulous 8145

BABR Tsunami 447P

TAU MS CHARM LADY 0300X

TAU Ms Coco 052KA 437D

| CE | BW | WW | YW | Milk | TM | CED |
|----|------|----|-----|------|----|------|
| 13 | -1.3 | 70 | 106 | 27 | 62 | 11.3 |

1A- Homozygous Black calving ease son of SAV Final Answer that's out of a sister to TAU Kruggerand 130P. If your looking for a calving ease sire with plenty of growth and power then here is the one for you.



Lot 32

50% HOMOZYGOUS BLACK DOUBLE POLLED BULL

Lot 33 ***TAU MR FINAL ANSWER 3A***

★ Calved: January 19, 2013 ★ Tattoo: TAU 3A ★ Reg. #: AMGV1268329

Birth Weight: 68 Adj. 205-day Wt: 729

Sitz Traveler 8180

S A V FINAL ANSWER 0035

S A V Emulous 8145

Honor Roll S232

TAU MS HONOR ROLL 1135Y

Miss Freedom 300N

| CE | BW | WW | YW | Milk | TM | CED |
|----|------|----|-----|------|----|-----|
| 15 | -2.0 | 64 | 103 | 25 | 60 | 11 |

3A-Homozygous Black, Double Polled son of Final Answer and out of a first calf heifer. 3A had one heck of a spread as he hit the ground at 68 pounds and grew to an impressive 729 pounds at weaning. Heres a calving ease sire with plenty of growth as well.

38% HOMOZYGOUS BLACK DOUBLE POLLED BULL

Lot 34 ***TAU MR FINAL ANSWER 4A***

★ Calved: January 20, 2013 ★ Tattoo: TAU 4A ★ Reg. #: AMGV1250081

Birth Weight: 70 Adj. 205-day Wt: 782

Sitz Traveler 8180

S A V FINAL ANSWER 0035

S A V Emulous 8145

TAU Mr Sleepy 204P

TAU MS SLEEPY 204P 1027Y

TAU Miss Tsunami 755T

| CE | BW | WW | YW | Milk | TM | CED |
|----|------|----|-----|------|----|------|
| 14 | -1.8 | 64 | 102 | 26 | 58 | 12.4 |

4A-Homozygous Black, Double Polled sure shot calving ease son of Final Answer that's out of a first calf Sleepy grand daughter. A huge spread in his EPD chart makes this guy a truly intriguing prospect.

38% HOMOZYGOUS BLACK DOUBLE POLLED BULL

Lot 35 ***TAU MR FINAL ANSWER 8A***

★ Calved: January 23, 2013 ★ Tattoo: TAU 8A ★ Reg. #: AMGV1250085

Birth Weight: 72 Adj. 205-day Wt: 720

Sitz Traveler 8180

S A V FINAL ANSWER 0035

S A V Emulous 8145

TAU Mr Gunnison 106R 230U

TAU MS GUNNISON 106 230U 178Y

TAU Ms Black Impact 859U

| CE | BW | WW | YW | Milk | TM | CED |
|----|------|----|-----|------|----|-----|
| 15 | -1.3 | 69 | 105 | 24 | 58 | 7.8 |

8A-Homozygous Black, Double Polled son of Final Answer and out of a first calf heifer. 8A posted a 72 pound weaning weight and hit the scales at weaning at 720 pounds. He's also backed by an impressive set of numbers.

38% HOMOZYGOUS BLACK DOUBLE POLLED BULL

Lot 36 ***TAU MR FINAL ANSWER 9A***

★ Calved: January 23, 2013 ★ Tattoo: TAU 9A ★ Reg. #: AMGV1250088

Birth Weight: 77 Adj. 205-day Wt: 694

Sitz Traveler 8180

S A V FINAL ANSWER 0035

S A V Emulous 8145

TAU Mr Kruggerand 70M 130P

TAU KRUGGERAND 70M 130P 180Y

TAU Freedom 5182R

| CE | BW | WW | YW | Milk | TM | CED |
|----|------|----|-----|------|----|------|
| 14 | -0.9 | 69 | 112 | 23 | 57 | 10.5 |

9A-Homozygous Black, Double Polled son of Final Answer that's double bred calving ease as he's also out of a first calf heifer. Check out the birth to weaning weight spread on this sure shot calving ease sire.

25% HOMOZYGOUS BLACK POLLED BULL

Lot 37 ***TAU MR FINAL ANSWER 13A***

★ Calved: January 23, 2013 ★ Tattoo: TAU 13A ★ Reg. #: AMGV1267999

Birth Weight: 72 Adj. 205-day Wt: 706

Sitz Traveler 8180

S A V FINAL ANSWER 0035

S A V Emulous 8145

DCSF Post Rock Granite 200P2

TAU MS 191Y

1161

| CE | BW | WW | YW | Milk | TM | CED |
|----|------|----|-----|------|----|-----|
| 14 | -1.6 | 71 | 110 | 26 | 62 | 9.2 |

13A- Homozygous Black son of SAV Final Answer that's backed by a powerful Post Rock Granite first calf heifer. Here is a sure shot calving ease candidate with great numbers that are second to none.



Lot 37

BALANCERS

38% BLACK DOUBLE POLLED BULL

Lot 38 **TAU MR FINAL ANSWER 16A**

★ Calved: January 26, 2013 ★ Tattoo: TAU 16A ★ Reg. #: AMGV1267994

Birth Weight: 78 **Adj. 205-day Wt: 653**Sitz Traveler 8180
S A V FINAL ANSWER 0035
S A V Emulous 8145TAU Mr Gunnison 106R 230U
TAU GUNNISON 106 230U 1041Y
TAU Miss Traveler 6807 407P

| CE | BW | WW | YW | Milk | TM | CED |
|----|------|----|-----|------|----|-----|
| 16 | -1.0 | 69 | 105 | 22 | 58 | 7.1 |

16A- Black, Double Polled. 16A is double bred calving ease out of a broody first calf heifer and Final Answer. He shows one heck of a birth to weaning spread in his genetic chart as well.

63% HOMOZYGOUS BLACK DOUBLE POLLED BULL

Lot 40 **TAU MR GUNNISON 18A**

★ Calved: January 26, 2013 ★ Tattoo: TAU 18A ★ Reg. #: AMGV1250097

Birth Weight: 86 **Adj. 205-day Wt: 682**VRT Rup Lazy TV HotfudgeJ357
GMCC RUPPLE GUNNISON N31
RUP Ruppel 919LS A V Final Answer 0035
TAU MS FINAL ANSWER 138Y
TAU Ms Gunnison 9178W

| CE | BW | WW | YW | Milk | TM | CED |
|----|-----|----|----|------|----|-----|
| 16 | 1.4 | 66 | 95 | 25 | 61 | 7 |

18A- Homozygous Black, Double Polled. 18A is a fine bull out of a Final Answer first calf female and Gunnison. He's also got a good genetic chart as well.

50% HOMOZYGOUS BLACK DOUBLE POLLED BULL

Lot 42 **TAU MR IN FOCUS 28A**

★ Calved: January 30, 2013 ★ Tattoo: TAU 28A ★ Reg. #: AMGV1250108

Birth Weight: 72 **Adj. 205-day Wt: 671**S A F Focus of E R
MYTTY IN FOCUS
Mytty Countess 906HYEK Black Impact 3960N
TAU MS BLACK IMPACT 1079Y
TAU Miss Tsunami 733T

| CE | BW | WW | YW | Milk | TM | CED |
|----|------|----|-----|------|----|-----|
| 15 | -1.6 | 63 | 100 | 26 | 57 | 6.7 |

28A- Homozygous Black, Double Polled son of In Focus and out of an impressive Impact Daughter. 28A is a rock solid calving ease candidate that is backed by a solid look and genetic profile.

50% BLACK POLLED BULL

Lot 44 **TAU HONUS 40A**

★ Calved: February 1, 2013 ★ Tattoo: TAU 40A ★ Reg. #: AMGV1250121

Birth Weight: 77 **Adj. 205-day Wt: 694**TC Grid Topper 355
TAU MR GRID TOPPER 43T
TAU Miss Ty 3130NTAU Mr Krugerrand 70M 130P
TAU MS KRUGERRAND 0142X
TAU Miss Sleepy 2103M

| CE | BW | WW | YW | Milk | TM | CED |
|----|-----|----|-----|------|----|-----|
| 9 | 0.7 | 65 | 102 | 17 | 49 | 9.2 |

40A- 40A is a tremendous son of 43T that's out of a great Krugerrand 130P daughter. This herdsire prospect is extremely wide and expressive in a moderate framed package. If you're looking to produce practical cattle that can function on pasture and in the yard take a look at this calf.

50% BLACK DOUBLE POLLED BULL

Lot 39 **TAU MR FREEDOM 17A**

★ Calved: January 26, 2013 ★ Tattoo: TAU 17A ★ Reg. #: AMGV1267992

Birth Weight: 75 **Adj. 205-day Wt: 675**VAA Leachman New Day 205B
SLC FREEDOM 178F ET
BB Miss 61YS A V Final Answer 0035
TAU MS FINAL ANSWER 104Y
9223W

| CE | BW | WW | YW | Milk | TM | CED |
|----|------|----|-----|------|----|-----|
| 13 | -0.3 | 68 | 102 | 20 | 54 | 9.0 |

17A- Black, Double Polled son of the late great Freedom that is double bred for calving ease being out of a magnificent Final Answer first calf heifer. This guy is above breed average for birth weight, weaning weight and yearling weight.

38% BLACK DOUBLE POLLED BULL

Lot 41 **TAU MR FINAL ANSWER 27A**

★ Calved: January 30, 2013 ★ Tattoo: TAU 27A ★ Reg. #: AMGV1250107

Birth Weight: 77 **Adj. 205-day Wt: 699**Sitz Traveler 8180
S A V FINAL ANSWER 0035
S A V Emulous 8145HYEK Black Impact 3960N
TAU BLACK IMPRESSION 1052Y ET
TAU Ms Dr P of 516E 716G

| CE | BW | WW | YW | Milk | TM | CED |
|----|------|----|-----|------|----|-----|
| 15 | -0.6 | 69 | 109 | 26 | 61 | 6.8 |

27A- Black, Double Polled sure shot calving ease sire out of a first calf heifer and Final Answer. 27A posts one of the most impressive genetic charts in the catalog and he goes back to one of our foundation females 716G.

38% HOMOZYGOUS BLACK POLLED BULL

Lot 43 **TAU MR GRIDTOPPER 43T 29A**

★ Calved: January 30, 2013 ★ Tattoo: TAU 29A ★ Reg. #: AMGV1250109

Birth Weight: 85 **Adj. 205-day Wt: 689**TC Grid Topper 355
TAU MR GRID TOPPER 43T
TAU Miss Ty 3130NTJB Night Moves 593R ET
TAU MS NIGHT MOVES 0214X
TAU 110S

| CE | BW | WW | YW | Milk | TM | CED |
|----|-----|----|-----|------|----|-----|
| 9 | 1.4 | 70 | 100 | 15 | 50 | 4.6 |

29A- Homozygous Black, Double Polled son of 43T and out of a broody cow. 29A attractive from the profile and powerfully constructed in a sound structured package.



Lot 44

50% BLACK DOUBLE POLLED BULL

Lot 45 **TAU MR HOT SHOT 332A ET**

★ Calved: January 28, 2013 ★ Tattoo: TAU 332A ★ Reg. #: AMGV1268056

Birth Weight: 80 Adj. 205-day Wt: 627

TC Grid Topper 355
TAU MR GRID TOPPER 43T
TAU Miss Ty 3130N

N Bar Emulation Ext
TAU MS N BAR EXT 4153P
TAU Ms Doctor Pepper 8108H

| CE | BW | WW | YW | Milk | TM | CED |
|----|-----|----|----|------|----|------|
| 10 | 1.1 | 66 | 97 | 19 | 52 | 10.2 |

332A-Black, Double Polled son of 43T and our donor cow 4153P. Here is a rare opportunity to buy a full brother to Top Gun 292Y who has quite a few calves in the offering.

50% HOMOZYGOUS BLACK HOMOZYGOUS POLLED BULL

Lot 47 **TAU JACKIE 42A**

★ Calved: February 2, 2013 ★ Tattoo: TAU 42A ★ Reg. #: AMGV1250374

Birth Weight: 78 Adj. 205-day Wt: 734

S A V Final Answer 0035
TAU FINAL COUNTDOWN 59Y
TAU Ms Gunnison 7211T ET

BABR Tsunami 447P
TAU MISS TSUNAMI 743T
TAU Miss Lead On 436P

| CE | BW | WW | YW | Milk | TM | CED |
|----|-----|----|-----|------|----|-----|
| 11 | 0.4 | 70 | 103 | 28 | 63 | 6.7 |

42A- Homozygous Black, Homozygous Polled, TAU Jackie 42a is a bull that we had picked out from the moment he was born. He's out of Final Countdown 59Y, and a very good Tsunami daughter. 42A is as powerful as they come, and he backs it up with a tremendous amount of body and look. Check him out in the Futurity in Denver.

63% HOMOZYGOUS BLACK DOUBLE POLLED BULL

Lot 48 **TAU MR WILD BILL 43A**

★ Calved: February 2, 2013 ★ Tattoo: TAU 43A ★ Reg. #: AMGV1250276

Birth Weight: 88 Adj. 205-day Wt: 753

ELK CK Crazy Horse 138P
ELK CK WILD BILL 42U
Job Danell Greta 42L ET

Mytty In Focus
TAU MISS IN FOCUS 927W
TAU Ms Grid Topper 7220T

| CE | BW | WW | YW | Milk | TM | CED |
|----|-----|----|-----|------|----|------|
| 12 | 1.1 | 76 | 117 | 26 | 64 | 10.7 |

43A-Homozygous Black, Double Polled. 43A is a larger framed bull that is out of our performance sire Wild Bill and a broody In Focus cow. This guy should follow in his father's footsteps and add performance to a set of calves.

25% HOMOZYGOUS BLACK DOUBLE POLLED BULL

Lot 50 **TAU MR CONSENSUS 48A**

★ Calved: February 3, 2013 ★ Tattoo: TAU 48A ★ Reg. #: AMGV1250378

Birth Weight: 77 Adj. 205-day Wt: 692

Connealy Consensus
CONNELY CONSENSUS 7229
Blue Lilly of Conanga 16

GMCC Ruppel Gunnison N31
TAU MS GUNNISON 920W
TAU Tsunami 733U

| CE | BW | WW | YW | Milk | TM | CED |
|----|-----|----|----|------|----|-----|
| 12 | 0.0 | 66 | 98 | 20 | 53 | 6.4 |

48A-Homozygous Black, Double Polled son of Connealy Consensus and a powerful Gunnison daughter. 48A is a calving ease sire that posted a weaning weight ratio of 110.

50% HOMOZYGOUS BLACK DOUBLE POLLED BULL

Lot 46 **TAU MR GRID TOPPER 43T 35A**

★ Calved: February 1, 2013 ★ Tattoo: TAU 35A ★ Reg. #: AMGV1256122

Birth Weight: 87 Adj. 205-day Wt: 674

TC Grid Topper 355
TAU MR GRID TOPPER 43T
TAU Miss Ty 3130N

TAU Tuned In 55T
TAU MS TUNED IN 0187X
TAU Miss Traveler 6807 407P

| CE | BW | WW | YW | Milk | TM | CED |
|----|-----|----|-----|------|----|-----|
| 10 | 1.7 | 68 | 105 | 11 | 45 | 6.2 |

35A-Homozygous Black, Double Polled son of our herdsire 43T and a powerful Tuned in second calf heifer. 35A has a tremendous amount of growth, performance, and carcass in his pedigree.



Lot 47

50% HOMOZYGOUS BLACK POLLED BULL

Lot 49 **TAU 46A**

★ Calved: February 3, 2013 ★ Tattoo: TAU 46A ★ Reg. #: AMGV1265450

Birth Weight: 87 Adj. 205-day Wt: 704

TC Grid Topper 355
TAU MR GRID TOPPER 43T
TAU Miss Ty 3130N

N Bar Emulation Ext
TAU MS N BAR EXT 4153P
TAU Ms Doctor Pepper 8108H

| CE | BW | WW | YW | Milk | TM | CED |
|----|-----|----|----|------|----|------|
| 10 | 1.1 | 66 | 97 | 19 | 52 | 10.2 |

46A- Homozygous Black. Here is a unique bull that is a full brother to TAU Top Gun 292Y that sold in our sale a couple of years ago. 46A combines a tremendous amount of power and eye appeal in a sound structured package.



Lot 49

50% BLACK DOUBLE POLLED BULL

Lot 51 **TAU MR GRIDIRON 782 53A**

★ Calved: February 4, 2013 ★ Tattoo: TAU 53A ★ Reg. #: AMGV1250287

Birth Weight: 84 **Adj. 205-day Wt: 704**TC Gridiron 258
TC GRIDIRON 782
TC Quality 3161TAU Gunnison 106R
TAU GUNNISON 106R 9146W
TAU Miss Sleepy 3179N

| CE | BW | WW | YW | Milk | TM | CED |
|----|-----|----|----|------|----|-----|
| 9 | 1.1 | 61 | 92 | 22 | 53 | 6.2 |

53A-Black, Double Polled son of TC Gridiron 782, and backed by a very maternal and fertile Gunnison daughter. His dam has always calved in the month of January, which is rather impressive. 53A embodies this with a very good look and eye appeal.

25% HOMOZYGOUS BLACK DOUBLE POLLED BULL

Lot 53 **TAU MR IN FOCUS 57A**

★ Calved: February 5, 2013 ★ Tattoo: TAU 57A ★ Reg. #: AMGV1250448

Birth Weight: 76 **Adj. 205-day Wt: 698**S A F Focus of E R
MYTTY IN FOCUS
Mytty Countess 906GMCC Ruppel Gunnison N31
TAU MS GUNNISON 139Y
TAU Ms Final Answer 908W

| CE | BW | WW | YW | Milk | TM | CED |
|----|------|----|-----|------|----|-----|
| 17 | -0.9 | 64 | 105 | 25 | 57 | 9.8 |

57A-Homozygous Black, Double Polled. 57A's pedigree stacks Gunnison, Final Answer, and In Focus into his pedigree, and those three tremendous sires lead to extreme Calving Ease, Carcass Value, Growth, and Maternal.

50% HOMOZYGOUS BLACK DOUBLE POLLED BULL

Lot 54 **TAU MR TOTAL 63A**

★ Calved: February 6, 2013 ★ Tattoo: TAU 63A ★ Reg. #: AMGV1256103

Birth Weight: 85 **Adj. 205-day Wt: 708**TC Total 410
DMRS MR TC TOTAL 048X
DMRS Rikki 52RTAU Mr Krugerrand 70M 130P
TAU MS KRUGERRAND 70M 9150W
TAU Miss Bon View 391N

| CE | BW | WW | YW | Milk | TM | CED |
|----|-----|----|-----|------|----|-----|
| 8 | 0.7 | 70 | 108 | 32 | 67 | 6.9 |

63A-Homozygous Black, Double Polled high growth and carcass sire that goes back to TC Total and 70M. 63A is sure to add pounds and dollars to a set of feeders.

63% BLACK DOUBLE POLLED BULL

Lot 56 **TAU MR GUNNISON 68A**

★ Calved: February 7, 2013 ★ Tattoo: TAU 68A ★ Reg. #: AMGV1250461

Birth Weight: 80 **Adj. 205-day Wt: 654**VRT Rup Lazy TV HotfudgeJ357
GMCC RUPPLE GUNNISON N31
RUP Ruppel 919LMytty In Focus
TAU MS IN FOCUS 130Y
TAU Ms Night Moves 9184W

| CE | BW | WW | YW | Milk | TM | CED |
|----|-----|----|-----|------|----|-----|
| 15 | 1.7 | 72 | 103 | 25 | 61 | 7.1 |

68A-Black, Double Polled son of Gunnison that's out of a powerful In Focus first calf heifer. 68A is double bred calving ease, and he combines a lot of good things together in his genetic profile.

50% HOMOZYGOUS BLACK POLLED BULL

Lot 52 **TAU MR TOP GUN 54A**

★ Calved: February 4, 2013 ★ Tattoo: TAU 54A ★ Reg. #: AMGV1250444

Birth Weight: 85 **Adj. 205-day Wt: 695**TAU Mr Grid Topper 43T
TAU TOP GUN 292Y
TAU Ms N Bar Ext 4153PTAU Sleepy 193R
TAU MS SLEEPY 193R 8276U
TAU Miss Citation 3140N

| CE | BW | WW | YW | Milk | TM | CED |
|----|-----|----|----|------|----|-----|
| 9 | 1.1 | 66 | 99 | 19 | 52 | 9.8 |

54A- Homozygous Black. 54A is a stout and moderate son of Top Gun 292Y and out of a very maternal Sleepy grand daughter. He is sound structured, wide made and expressively muscled. Just one look at his picture tells the whole story.



Lot 52

63% HOMOZYGOUS BLACK POLLED BULL

Lot 55 **TAU SACHEL 67A**

★ Calved: February 7, 2013 ★ Tattoo: TAU 67A ★ Reg. #: AMGV1250459

Birth Weight: 78 **Adj. 205-day Wt: 712**CTR Good Night 4743P
CTR GOOD NIGHT 715T
CTR Poll Star 5160EGMCC Ruppel Gunnison N31
TAU MS GUNNISON 917W
TAU Miss TC Freedom 7117T

| CE | BW | WW | YW | Milk | TM | CED |
|----|------|----|----|------|----|------|
| 15 | -0.4 | 61 | 90 | 29 | 60 | 11.4 |

67A- Homozygous Black son of Good Night 715T and another great Gunnison daughter. 67A is wide at the ground and expressive up high, he's also backed by a great set of numbers.



Lot 55

38% HOMOZYGOUS BLACK DOUBLE POLLED BULL

Lot 57 **TAU MR CONSENSUS 70A**

★ Calved: February 7, 2013 ★ Tattoo: TAU 70A ★ Reg. #: AMGV1250463
Birth Weight: 78 Adj. 205-day Wt: 706

Connealy Consensus
CONNEALY CONSENSUS 7229
 Blue Lilly of Conanga 16

GMCC Ruppel Gunnison N31
TAU GUNNISON 9129W
 TAU Ms Sleepy 204P 7130T

| CE | BW | WW | YW | Milk | TM | CED |
|----|-----|----|-----|------|----|-----|
| 12 | 0.1 | 67 | 105 | 23 | 56 | 7.8 |

70A-Homozygous Black, Double Polled son of Connealy Consensus 7229 and out of a super maternal Gunnison daughter. There is a ton of power and growth in this calf that weaned off the cow at 706 pounds.

50% HOMOZYGOUS BLACK DOUBLE POLLED BULL

Lot 59 **TAU MR FINAL COUNTDOWN 74A**

★ Calved: February 8, 2013 ★ Tattoo: TAU 74A ★ Reg. #: AMGV1250467
Birth Weight: 85 Adj. 205-day Wt: 681

S A V Final Answer 0035
TAU FINAL COUNTDOWN 59Y
 TAU Ms Gunnison 7211T ET

TAU Gunnison N31 205R
TAU MS GUNNISON 205R 9187W
 TAU Miss Traveler 2T22 701T

| CE | BW | WW | YW | Milk | TM | CED |
|----|-----|----|-----|------|----|-----|
| 13 | 0.9 | 74 | 111 | 29 | 66 | 8.3 |

74A-Homozygous Black, Double Polled son of Final Countdown and out of an impressive 3 year old cow. Check out the growth figures on this potential herdsire, and you should be impressive by his weaning and yearling EPD's.

50% HOMOZYGOUS BLACK POLLED BULL

Lot 61 **TAU MR TOP GUN 76A**

★ Calved: February 8, 2013 ★ Tattoo: TAU 76A ★ Reg. #: AMGV1250472
Birth Weight: 91 Adj. 205-day Wt: 807

TAU Mr Grid Topper 43T
TAU TOP GUN 292Y
 TAU Ms N Bar Ext 4153P

BT Crossover 758N
TAU MS CROSSOVER 879U
 TAU Miss Z937 383N

| CE | BW | WW | YW | Milk | TM | CED |
|----|-----|----|----|------|----|-----|
| 10 | 1.2 | 70 | 96 | 23 | 58 | 9.1 |

76A- Homozygous Black. Here is a son of Top Gun 292Y and out of a tremendous BT Crossover cow that the kids showed. This guy weighed 807 at weaning and he hasn't stopped growing since. He is a meat wagon with a ton of growth and performance that he should pass on to his progeny.

50% BLACK DOUBLE POLLED BULL

Lot 62 **TAU MR HOOVER DAM 77A**

★ Calved: February 9, 2013 ★ Tattoo: TAU 77A ★ Reg. #: AMGV1250473
Birth Weight: 80 Adj. 205-day Wt: 735

Syden C C & 7
HOOVER DAM
 Erica of Ellston C124

SLC Freedom 178F ET
TAU MISS FREEDOM 790T
 TAU Ms Stuart 6105F

| CE | BW | WW | YW | Milk | TM | CED |
|----|------|----|----|------|----|-----|
| 12 | -0.1 | 58 | 93 | 34 | 63 | 8.0 |

77A-Black, Double Polled powerful son of the popular A.I. sire Hoover Dam and out of a great Freedom daughter that hasn't weaned a calf under 700 pounds in her career, and 77A is no different. Big weaning weight and plenty of power.

50% BLACK DOUBLE POLLED BULL

Lot 58 **TAU MR IN FOCUS 71A**

★ Calved: February 7, 2013 ★ Tattoo: TAU 71A ★ Reg. #: AMGV1250464
Birth Weight: 83 Adj. 205-day Wt: 739

S A F Focus of E R
MYTTY IN FOCUS
 Mytty Countess 906

SLC Freedom 178F ET
TAU MS FREEDOM 918W
 TAU Miss Gunnison 787T

| CE | BW | WW | YW | Milk | TM | CED |
|----|------|----|-----|------|----|-----|
| 17 | -0.5 | 66 | 103 | 23 | 56 | 9.9 |

71A-Black, Double Polled son of In Focus and a calving ease Freedom daughter. Check out the impressive above breed average numbers on this guy. Born at 83 pounds and weaned off at 739 pounds. This guy has come on strong and is certainly destined to change any herd.

38% BLACK DOUBLE POLLED BULL

Lot 60 **TAU MR TOP GUN 75A**

★ Calved: February 8, 2013 ★ Tattoo: TAU 75A ★ Reg. #: AMGV1250471
Birth Weight: 87 Adj. 205-day Wt: 715

TAU Mr Grid Topper 43T
TAU TOP GUN 292Y
 TAU Ms N Bar Ext 4153P

BUF BFCK Cherokee Cnyn 4912
TAU MS CHEROKEE 6168S
 TAU Ms Freedom 58K 4222P

| CE | BW | WW | YW | Milk | TM | CED |
|----|-----|----|----|------|----|-----|
| 11 | 0.7 | 65 | 93 | 19 | 51 | 5.0 |

75A-Black, Double Polled son of Top Gun 292Y and out of a stout made Cherokee Canyon daughter. He has a solid set of numbers and weaned off the cow at 715 pounds.



Lot 61

Add as much as \$1000 over the life of a crossbred cow with planned crossbreeding

38% HOMOZYGOUS BLACK POLLED BULL

Lot 63 **TAU MR FINAL COUNTDOWN 79A**

★ Calved: February 9, 2013 ★ Tattoo: TAU 79A ★ Reg. #: AMGV1250475

Birth Weight: 82 **Adj. 205-day Wt: 738**

S A V Final Answer 0035

TAU FINAL COUNTDOWN 59Y

TAU Ms Gunnison 7211T ET

JBOB 3303K ET

TAU MS JUNIOR 3303K 7149T

TAU Ms New Design 878 308

| CE | BW | WW | YW | Milk | TM | CED |
|----|-----|----|-----|------|----|-----|
| 11 | 1.0 | 72 | 110 | 30 | 66 | 8.8 |

79A- Homozygous Black. Another son of Final Countdown 59Y. 79A offers a tremendous look, being level made and square. He's also powerful as he weaned of the cow at 738 pounds.



Lot 63

50% HOMOZYGOUS BLACK DOUBLE POLLED BULL

Lot 64 **TAU MR CONSENSUS 80A**

★ Calved: February 9, 2013 ★ Tattoo: TAU 80A ★ Reg. #: AMGV1256090

Birth Weight: 80 **Adj. 205-day Wt: 660**

Connealy Consensus

CONNEALY CONSENSUS 7229

Blue Lilly of Conanga 16

PPFG PCCI Power Pac 13F

TAU MISS POWER PAC 13N

TAU Miss Rodeo Drive 1152L

| CE | BW | WW | YW | Milk | TM | CED |
|----|-----|----|----|------|----|-----|
| 11 | 0.0 | 66 | 97 | 18 | 52 | 9.2 |

80A- Homozygous Black, Double Polled son of Connealy Consensus and a ten year old cow that flat gets it done. He is good bodied, long made, and heavy muscled.

50% HOMOZYGOUS BLACK POLLED BULL

Lot 65 **TAU MR CONSENSUS 85A**

★ Calved: February 9, 2013 ★ Tattoo: TAU 85A ★ Reg. #: AMGV1250478

Birth Weight: 84 **Adj. 205-day Wt: 641**

Connealy Consensus

CONNEALY CONSENSUS 7229

Blue Lilly of Conanga 16

BABR Tsunami 447P

TAU MS TSUNAMI 722T

TAU Miss Megan 427D

| CE | BW | WW | YW | Milk | TM | CED |
|----|-----|----|----|------|----|-----|
| 9 | 1.2 | 62 | 98 | 20 | 51 | 7.8 |

85A- Homozygous Black. This son of Connealy Consensus 7229 is very powerfully constructed and stout featured. He is wide made, expressively muscled, and big footed.



Lot 65

50% HOMOZYGOUS BLACK DOUBLE POLLED BULL

Lot 66 **TAU MR TOP GUN 86A**

★ Calved: February 9, 2013 ★ Tattoo: TAU 86A ★ Reg. #: AMGV1250479

Birth Weight: 88 **Adj. 205-day Wt: 750**

TAU Mr Grid Topper 43T

TAU TOP GUN 292Y

TAU Ms N Bar Ext 4153P

H S A F Bando 1961

TAU BANDO 8131U

TAU Ms Blacksmith 660F

| CE | BW | WW | YW | Milk | TM | CED |
|----|-----|----|-----|------|----|-----|
| 8 | 1.7 | 74 | 102 | 22 | 59 | 7.5 |

86A-Homozygous Black, Double Polled 86A is out of and good Bando 1961 cow and Top Gun 292Y. 86A weaned off the cow at 750 pounds and he ratioed 115. There's a ton of growth in this potential herdsire.

38% HOMOZYGOUS BLACK DOUBLE POLLED BULL

Lot 67 **TAU MR HOOVER DAM 91A**

★ Calved: February 9, 2013 ★ Tattoo: TAU 91A ★ Reg. #: AMGV1250484

Birth Weight: 82 **Adj. 205-day Wt: 645**

Sydgen C C & 7

HOOVER DAM

Erica of Ellston C124

SGRI Honor Roll S232

TAU MS HONOR ROLL 8127U

TAU Ms Gunnison 5150R

| CE | BW | WW | YW | Milk | TM | CED |
|----|-----|----|----|------|----|-----|
| 13 | 0.5 | 60 | 94 | 34 | 64 | 8.5 |

91A-Homozygous Black, Double Polled son of the popular A.I. sire Hoover Dam. If you're looking for a larger framed longer bodied herdsire to pack some growth into a calf crop this sire will do it.

50% BLACK DOUBLE POLLED BULL

Lot 68 **TAU MR GRIDIRON 782 92A**

★ Calved: February 9, 2013 ★ Tattoo: TAU 92A ★ Reg. #: AMGV1250485

Birth Weight: 86 **Adj. 205-day Wt: 658**

TC Gridiron 258

TC GRIDIRON 782

TC Quality 3161

SGRI Honor Roll S232

TAU MS HONOR ROLL 9122W

TAU Ms Gunnison 5215R

| CE | BW | WW | YW | Milk | TM | CED |
|----|-----|----|----|------|----|-----|
| 9 | 0.7 | 58 | 95 | 22 | 51 | 6.8 |

92A-Black, Double Polled son of TC Gridiron 782 and out of an Honor Roll daughter. 92a is long, level and attractive from the profile.

38% HOMOZYGOUS BLACK DOUBLE POLLED BULL

Lot 69 **TAU MR GRID TOPPER 43T 93A**

★ Calved: February 10, 2013 ★ Tattoo: TAU 93A ★ Reg. #: AMGV1267993

Birth Weight: 85 **Adj. 205-day Wt: 691**

TC Grid Topper 355
TAU MR GRID TOPPER 43T
TAU Miss Ty 3130N

Mytty In Focus
TAU MS IN FOCUS 074X
TAU Ms Honor Roll 8127U

| CE | BW | WW | YW | Milk | TM | CED |
|----|-----|----|-----|------|----|-----|
| 13 | 0.8 | 73 | 106 | 17 | 53 | 8.4 |

93A- Homozygous Black, Double Polled son of 43T and out of an impressive In Focus second calf heifer. 93A is backed by an impressive genetic profile, and he should upgrade weaning and yearling weights.

63% HOMOZYGOUS BLACK POLLED BULL

Lot 71 **TAU MR TOP GUN 98A**

★ Calved: February 10, 2013 ★ Tattoo: TAU 98A ★ Reg. #: AMGV1256080

Birth Weight: 89 **Adj. 205-day Wt: 695**

TAU Mr Grid Topper 43T
TAU TOP GUN 292Y
TAU Ms N Bar Ext 4153P

GMCC Ruppel Gunnison N31
TAU MISS GUNNISON 835U
TAU Ms Onix 6119S

| CE | BW | WW | YW | Milk | TM | CED |
|----|-----|----|----|------|----|-----|
| 11 | 1.7 | 62 | 88 | 24 | 55 | 8.5 |

98A- Homozygous Black. 98A is another son of Top Gun 292Y that is out of a very maternal and powerful Gunnison daughter. He's bold ribbed, wide made, and attractive.



Lot 72

50% HOMOZYGOUS BLACK DOUBLE POLLED BULL

Lot 73 **TAU MR HOOVER DAM 106A**

★ Calved: February 11, 2013 ★ Tattoo: TAU 106A ★ Reg. #: AMGV1256131

Birth Weight: 85 **Adj. 205-day Wt: 662**

Syden C C & 7
HOOVER DAM
Erica of Ellston C124

SEPT Rodeo Drive J14
TAU MISS RODEO DRIVE 2147M
TAU Ms Dr Pepper 1002H

| CE | BW | WW | YW | Milk | TM | CED |
|----|-----|----|----|------|----|-----|
| 9 | 0.7 | 61 | 93 | 33 | 64 | 8.2 |

106A- Homozygous Black, Double Polled son of Hoover Dam. If you're looking for a moderate framed beef bull that is extremely powerful and wide here he is. 106A is also backed by a powerful 12 year old Rodeo Drive daughter.

38% HOMOZYGOUS BLACK DOUBLE POLLED BULL

Lot 70 **TAU MR CONSENSUS 96A**

★ Calved: February 10, 2013 ★ Tattoo: TAU 96A ★ Reg. #: AMGV1256078

Birth Weight: 84 **Adj. 205-day Wt: 699**

Connealy Consensus
CONNEALY CONSENSUS 7229
Blue Lilly of Conanga 16

GMCC Ruppel Gunnison N31
TAU MS GUNNISON 5100R
TAU Ms Pepper 835H

| CE | BW | WW | YW | Milk | TM | CED |
|----|-----|----|-----|------|----|-----|
| 11 | 1.2 | 67 | 105 | 23 | 56 | 8.0 |

96A- Homozygous Black, Double Polled son of Connealy Consensus and backed by an impressive Gunnison daughter that won the Buffalo County Fair back in her day. This calf is stout made, deep bodied, and extended.



Lot 71

50% BLACK POLLED BULL

Lot 72 **TAU MR POWERHOUSE 99A**

★ Calved: February 10, 2013 ★ Tattoo: TAU 99A ★ Reg. #: AMGV1268070

Birth Weight: 88 **Adj. 205-day Wt: 719**

DFW Blackjack B538
WAC BLACKJACK 049F
WAC 702A

B C C Bushwacker 41-93
TAU MS BW 469P
W B Blackbird 1203

| CE | BW | WW | YW | Milk | TM | CED |
|----|-----|----|----|------|----|-----|
| 7 | 1.5 | 70 | 90 | 33 | 68 | 3.8 |

99A- Black, Double Polled son of Blackjack 049F. 99A is a larger framed bull that is extremely long bodied and high performing. Look for him to add growth to a calf crop.

50% BLACK DOUBLE POLLED BULL

Lot 74 **TAU MR IRON MAN 121A**

★ Calved: February 12, 2013 ★ Tattoo: TAU 121A ★ Reg. #: AMGV1256271

Birth Weight: 86 **Adj. 205-day Wt: 653**

TC Gridiron 782
TAU MR GRIDIRON 250Y
TAU Ms Tsunami 8217U

TC Freedom 104
TAU MS TC FREEDOM 812U
TAU Miss Big Sky 3107N

| CE | BW | WW | YW | Milk | TM | CED |
|----|-----|----|----|------|----|-----|
| 9 | 0.8 | 65 | 98 | 19 | 51 | 8.7 |

121A- Black, Double Polled son of Iron Man 250Y and a TC Freedom daughter. 121A is extremely stylish and attractive with above average breed growth traits.

50% HOMOZYGOUS BLACK POLLED BULL

Lot 75 **TAU MR LOADED GUN 100A**

★ Calved: February 10, 2013 ★ Tattoo: TAU 100A ★ Reg. #: AMGV1256084

Birth Weight: 90 **Adj. 205-day Wt: 715**

TAU Mr Grid Topper 43T

TAU TOP GUN 292Y

TAU Ms N Bar Ext 4153P

Bon View New Design 1407

TAU MS NEW DESIGN 1407 604S

TAU TAU Freedom 426P

| CE | BW | WW | YW | Milk | TM | CED |
|----|-----|----|----|------|----|------|
| 12 | 0.7 | 62 | 91 | 20 | 51 | 10.0 |

100A- Homozygous Black. Here is a moderate framed, powerfully constructed son of Top Gun 292Y that is bold ribbed and attractive. He is also backed by a good 1407 daughter and a 715 pound weaning weight.

**Lot 76**

38% BLACK DOUBLE POLLED BULL

Lot 77 **TAU MR GEORGE 123A**

★ Calved: February 12, 2013 ★ Tattoo: TAU 123A ★ Reg. #: AMGV1268054

Birth Weight: 78 **Adj. 205-day Wt: 730**

Sitz Traveler 8180

S A V FINAL ANSWER 0035

S A V Emulous 8145

SLC Freedom 178F ET

TAU MS FREEDOM 635S

TAU Ms Big Sky 4204P

| CE | BW | WW | YW | Milk | TM | CED |
|----|------|----|-----|------|----|------|
| 15 | -1.1 | 72 | 107 | 20 | 56 | 10.7 |

123A-Black, Double Polled son of Final Answer that's double bred for calving ease. He hit the ground at 78 pounds and weaned off the cow at 730. That's a huge spread that shouldn't be overlooked.

50% HOMOZYGOUS BLACK POLLED BULL

Lot 79 **TAU MR MANTLE 128A**

★ Calved: February 13, 2013 ★ Tattoo: TAU 128A ★ Reg. #: AMGV1256364

Birth Weight: 87 **Adj. 205-day Wt: 753**

Connealy Consensus

CONNEALY CONSENSUS 7229

Blue Lilly of Conanga 16

SLC Freedom 178F ET

TAU TAU FREEDOM 439P

TAU Miss Dr Pepper 2221M

| CE | BW | WW | YW | Milk | TM | CED |
|----|-----|----|-----|------|----|-----|
| 9 | 1.3 | 73 | 110 | 19 | 56 | 7.2 |

128A- Homozygous Black. 128A is another wide built and powerful son of Connealy Consensus 7229 that's out a tremendous Freedom daughter. This guy couples an awesome look with plenty of practicality. Don't forget that he weaned off at 753 pounds. 128A will be making the trip to Denver with us.

**Lot 75**

50% HOMOZYGOUS BLACK POLLED BULL

Lot 76 **TAU MR TAUBY 108A**

★ Calved: February 11, 2013 ★ Tattoo: TAU 108A ★ Reg. #: AMGV1256133

Birth Weight: 82 **Adj. 205-day Wt: 741**

Connealy Consensus

CONNEALY CONSENSUS 7229

Blue Lilly of Conanga 16

SGRI Honor Roll S232

TAU MS HONOR ROLL 8236U

TAU Gunnison 5180R

| CE | BW | WW | YW | Milk | TM | CED |
|----|------|----|----|------|----|-----|
| 12 | -0.2 | 70 | 99 | 23 | 57 | 7.6 |

108A- Homozygous Black. 108A is backed by one of the most popular bulls in the Angus breed Connealy Consensus 7229. Here is a very complete herdsire prospect that sound structured, high performing, and powerful.

38% HOMOZYGOUS BLACK DOUBLE POLLED BULL

Lot 78 **TAU MR MARS 127A**

★ Calved: February 13, 2013 ★ Tattoo: TAU 127A ★ Reg. #: AMGV1256363

Birth Weight: 85 **Adj. 205-day Wt: 668**

Connealy Consensus

CONNEALY CONSENSUS 7229

Blue Lilly of Conanga 16

SLC Freedom 178F ET

TAU TAU FREEDOM 438P

TAU Miss Dee 404D

| CE | BW | WW | YW | Milk | TM | CED |
|----|-----|----|-----|------|----|-----|
| 11 | 0.3 | 62 | 102 | 16 | 47 | 6.9 |

127A-Homozygous Black, Double Polled. 127A is an awesome son of Connealy Consensus 7229 and out of a powerful Freedom daughter. He is moderate framed, powerfully made, and attractive.

50% BLACK POLLED BULL

Lot 80 **TAU MR TOP GUN 133A**

★ Calved: February 13, 2013 ★ Tattoo: TAU 133A ★ Reg. #: AMGV1256373

Birth Weight: 86 **Adj. 205-day Wt: 691**

TAU Mr Grid Topper 43T

TAU TOP GUN 292Y

TAU Ms N Bar Ext 4153P

Connealy Lead On

TAU MS LEAD ON 463P

TAU Ms Nitehawk 826H

| CE | BW | WW | YW | Milk | TM | CED |
|----|-----|----|-----|------|----|-----|
| 7 | 1.4 | 64 | 102 | 23 | 55 | 7.8 |

133A-Black, Double Polled son of Top Gun 292Y that's out of a good Lead On female. This sires actual weaning weight coupled with his chart figures leads me to believe he will certainly add pounds to a set of calves.

75% HOMOZYGOUS BLACK DOUBLE POLLED BULL

Lot 81 **TAU LOHMAN 90A**

★ Calved: February 9, 2013 ★ Tattoo: TAU 90A ★ Reg. #: AMGV1256476

Birth Weight: 88 **Adj. 205-day Wt: 786**

JKGF Kobalt 82U ET
TNTF DARKHORSE 061W
 HYEK Alyiah 3161N

BT Crossover 758N
TAU MS CROSSOVER 863U
 TAU Miss Bennets Bonus 230M

| CE | BW | WW | YW | Milk | TM | CED |
|----|-----|----|----|------|----|-----|
| 8 | 0.5 | 65 | 86 | 32 | 64 | 7.1 |

90A- Homozygous Black, Double Polled son of TNTF Darkhorse. 90A is an extremely powerful and growthy calf that is long bodied and heavy muscled. He also hit the scales at weaning at 786 pounds.

50% HOMOZYGOUS BLACK POLLED BULL

Lot 83 **TAU MR CLEMENTE 116A**

★ Calved: February 11, 2013 ★ Tattoo: TAU 116A ★ Reg. #: AMGV1256147

Birth Weight: 84 **Adj. 205-day Wt: 732**

TC Gridiron 782
TAU MR GRIDIRON 250Y
 TAU Ms Tsunami 8217U

S S Traveler 6807 T510
TAU MS 6807 517R
 TAU Miss Sleepy 3193N

| CE | BW | WW | YW | Milk | TM | CED |
|----|-----|----|-----|------|----|-----|
| 9 | 0.6 | 66 | 100 | 21 | 54 | 8.9 |

116A- Homozygous Black. If you're looking for a true growth bull with plenty of look and power you better check 116A out. This guy is high performing, long and extended. He's out of "Iron Man" 250Y and a good uddered Traveler T510 daughter. He is headed to Denver.



Lot 83

50% BLACK DOUBLE POLLED BULL

Lot 85 **TAU MR TOP GUN 140A**

★ Calved: February 14, 2013 ★ Tattoo: TAU 140A ★ Reg. #: AMGV1256378

Birth Weight: 86 **Adj. 205-day Wt: 766**

TAU Mr Grid Topper 43T
TAU TOP GUN 292Y
 TAU Ms N Bar Ext 4153P

TC Grid Topper 355
TAU MS GRID TOPPER 8149U
 TAU Ms Dr Pepper 818H

| CE | BW | WW | YW | Milk | TM | CED |
|----|-----|----|----|------|----|------|
| 10 | 1.0 | 69 | 98 | 19 | 54 | 10.6 |

140A-Black, Double Polled son of Top Gun 292Y and out of a moderate framed Grid Topper daughter. 140A exhibits a ton of power and mass, and he weaned off at 766 pounds to boot.

50% RED DOUBLE POLLED BULL

Lot 82 **TAU COBB 109A**

★ Calved: February 11, 2013 ★ Tattoo: TAU 109A ★ Reg. #: AMGV1256134

Birth Weight: 88 **Adj. 205-day Wt: 724**

TC Grid Topper 355
TAU MR GRID TOPPER 43T
 TAU Miss Ty 3130N

S A V 8180 Traveler 004
TAU MS TRAVELER 004 643S
 TAU Miss Freedom 210M

| CE | BW | WW | YW | Milk | TM | CED |
|----|-----|----|-----|------|----|-----|
| 11 | 0.7 | 65 | 100 | 19 | 52 | 8.3 |

109A- Red, Double Polled son of 43T that goes back to Traveler 004 on the dam's side. If you want a red bull with a ton of power, width, and body here he is. This calf is as stout as they come.



Lot 82

38% HOMOZYGOUS BLACK DOUBLE POLLED BULL

Lot 84 **TAU MR IN FOCUS 137A**

★ Calved: February 13, 2013 ★ Tattoo: TAU 137A ★ Reg. #: AMGV1256376

Birth Weight: 70 **Adj. 205-day Wt: 661**

S A F Focus of E R
MYTTY IN FOCUS
 Mytty Countess 906

TAU Gunnison 106R
TAU MS GUNNISON 106R 1065Y
 TAU Ms Krugerrand 70M 7162T

| CE | BW | WW | YW | Milk | TM | CED |
|----|------|----|----|------|----|-----|
| 16 | -1.8 | 59 | 97 | 21 | 50 | 6.6 |

137A-Homozygous Black, Double Polled son of In Focus and out of a good first calf heifer. 137A is double bred for calving ease, and should be one that will add some look as well.

50% BLACK DOUBLE POLLED BULL

Lot 86 **TAU MR BLACK SENSATION 148A**

★ Calved: February 15, 2013 ★ Tattoo: TAU 148A ★ Reg. #: AMGV1256406

Birth Weight: 75 **Adj. 205-day Wt: 689**

HYEK Black Impact 3960N
TAU MR BLACK SENSATION 271Y ET
 TAU Ms Sleepy 920J

HXC Raven 6003S
UH-HVH 806U
 OGF Patriot Marble L006

| CE | BW | WW | YW | Milk | TM | CED |
|----|-----|----|----|------|----|-----|
| 10 | 0.4 | 61 | 89 | 22 | 53 | 2.4 |

148A-Black, Double Polled son of Black Sensation our sale topping purebred from a couple of years ago. This guy is backed by a fine Red Angus female and he is extremely wide made and heavy muscled.

50% HOMOZYGOUS BLACK POLLED BULL

Lot 87 **TAU MR GOOD NITE 147A**

★ Calved: February 15, 2013 ★ Tattoo: TAU 147A ★ Reg. #: AMGV1256404

Birth Weight: 86 **Adj. 205-day Wt: 698**

CTR Good Night 4743P

CTR GOOD NIGHT 715T

CTR Poll Star 5160E

S S Traveler 6807 T510

TAU MS TRAVELER 6807 4103P

TAU Miss Rodeo Drive 261M

| CE | BW | WW | YW | Milk | TM | CED |
|----|-----|----|-----|------|----|-----|
| 11 | 0.2 | 66 | 103 | 28 | 61 | 9.8 |

147A- Homozygous Black. 147A is a sound structured son of the popular Good Night 715T and a powerful T510 daughter. 147A has plenty of look and eye appeal and backs it up with a tremendous set of numbers.

**Lot 87**

50% BLACK DOUBLE POLLED BULL

Lot 88 **TAU MR FINAL ANSWER 150A**

★ Calved: February 16, 2013 ★ Tattoo: TAU 150A ★ Reg. #: AMGV1256410

Birth Weight: 80 **Adj. 205-day Wt: 694**

Sitz Traveler 8180

S A V FINAL ANSWER 0035

S A V Emulous 8145

BABR Tsunami 447P

TAU MS TSUNAMI 8217U

TAU Miss Freedom 2121M

| CE | BW | WW | YW | Milk | TM | CED |
|----|------|----|-----|------|----|------|
| 14 | -1.0 | 66 | 103 | 22 | 55 | 11.6 |

150A- Black, Double Polled son of Final Answer and out of another powerful and stout Tsunami daughter. Check the genetic chart on this guy. The old man says this guy will be a calving ease sire as well. 150A is a combination bull for sure.

50% HOMOZYGOUS BLACK POLLED BULL

Lot 89 **TAU MR KOUFAX 162A**

★ Calved: February 18, 2013 ★ Tattoo: TAU 162A ★ Reg. #: AMGV1256437

Birth Weight: 69 **Adj. 205-day Wt: 692**

Connealy Consensus

CONNEALY CONSENSUS 7229

Blue Lilly of Conanga 16

GMCC Ruppel Gunnison N31

TAU GUNNISON 5151R

TAU Miss Bennets Bonus 230M

| CE | BW | WW | YW | Milk | TM | CED |
|----|------|----|----|------|----|-----|
| 13 | -1.1 | 61 | 97 | 24 | 55 | 8.5 |

162A- Homozygous Black. This calf is the result of a tremendous mating of Connealy Consensus and a truly unique Gunnison daughter who is also the mother of the popular A.I. sire Gunslinger 19U. Needless to say this guy has all the potential in the world to be a difference maker in any herd. 162A is headed to the stock show in the yards.

**Lot 89**

50% BLACK DOUBLE POLLED BULL

Lot 90 **TAU MR TOP GUN 173A**

★ Calved: February 20, 2013 ★ Tattoo: TAU 173A ★ Reg. #: AMGV1268328

Birth Weight: 86 **Adj. 205-day Wt: 626**

TAU Mr Grid Topper 43T

TAU TOP GUN 292Y

TAU Ms N Bar Ext 4153P

BFCK Cherokee Cnyn 4912

TAU MISS CHEROKEE 7114T

Miss Freedom 2186M

| CE | BW | WW | YW | Milk | TM | CED |
|----|-----|----|----|------|----|-----|
| 11 | 0.6 | 70 | 99 | 19 | 54 | 5 |

173A- Black, Double Polled son of Top Gun 292Y and out of a powerful and moderate Cherokee Canyon female with an awesome number. 173A weaned off at 715 pounds, and packs plenty of growth into his chart as well.

50% HOMOZYGOUS BLACK POLLED BULL

Lot 91 **TAU MR GUNSLINGER 178A**

★ Calved: February 21, 2013 ★ Tattoo: TAU 178A ★ Reg. #: AMGV1268187

Birth Weight: 81 **Adj. 205-day Wt: 666**

Honor Roll S232

GUNSLINGER 19U

Gunnison 5151R

Bon View New Design 1407

TAU 527R

TAU Miss Ultrasound 321

| CE | BW | WW | YW | Milk | TM | CED |
|----|-----|----|----|------|----|-----|
| 11 | 1.4 | 58 | 94 | 27 | 56 | 7 |

178A- Homozygous Black Double Polled. 178A is a stout made powerfully constructed herdsire prospect that is wide made and expressively muscled.

50% BLACK DOUBLE POLLED BULL

Lot 92 **TAU MR GOOD NIGHT 184A**

★ Calved: February 21, 2013 ★ Tattoo: TAU 184A ★ Reg. #: AMGV1256485

Birth Weight: 87 **Adj. 205-day Wt: 669**

CTR Good Night 4743P

CTR GOOD NIGHT 715T

CTR Poll Star 5160E

S S Traveler T510 2T22

TAU MISS TRAVELER 2T22 701T

TAU Sleepy 5234R

| CE | BW | WW | YW | Milk | TM | CED |
|----|------|----|-----|------|----|------|
| 14 | -0.8 | 63 | 106 | 30 | 61 | 12.4 |

184A- Black, Double Polled son of CTR Good Night 715T and out of a great Traveler daughter. This guy is a maternal brother to our high selling balancer from last year, and he has the same attractive look that his brother did.

50% HOMOZYGOUS BLACK DOUBLE POLLED BULL

Lot 93 **TAU MR GRIDIRON 195A**

★ Calved: February 23, 2013 ★ Tattoo: TAU 195A ★ Reg. #: AMGV1256497

Birth Weight: 87 Adj. 205-day Wt: 718

TC Gridiron 258
TC GRIDIRON 782
TC Quality 3161

TJB Sleepy 161F
TAU MISS SLEEPY 897U
TAU 3198N

| CE | BW | WW | YW | Milk | TM | CED |
|----|-----|----|----|------|----|-----|
| 8 | 0.6 | 58 | 92 | 20 | 49 | 7.2 |

195A-Homozygous Black, Double Polled son of TC Gridiron 782 and out of a powerful Sleepy daughter. 195A weaned off the cow at 714 pounds.

50% HOMOZYGOUS BLACK POLLED BULL

Lot 95 **TAU MR GRID IRON 782 202A**

★ Calved: February 24, 2013 ★ Tattoo: TAU 202A ★ Reg. #: AMGV1267998

Birth Weight: 78 Adj. 205-day Wt: 752

TC Gridiron 258
TC GRIDIRON 782
TC Quality 3161

GMCC Ruppel Gunnison N31
TAU MS GUNNISON 588R
TAU Miss Freedom 2191M

| CE | BW | WW | YW | Milk | TM | CED |
|----|-----|----|----|------|----|-----|
| 11 | 0.0 | 63 | 97 | 23 | 55 | 7.6 |

202A- Homozygous Black son of TC Gridiron 782 and out of a very maternal Gunnison daughter. 202A is a female maker in every sense of the word. He couples a tremendous look with plenty of body in a good structured package.



Lot 96

50% HOMOZYGOUS BLACK DOUBLE POLLED BULL

Lot 97 **TAU MR GRIDIRON 250A**

★ Calved: March 9, 2013 ★ Tattoo: TAU 250A ★ Reg. #: AMGV1256627

Birth Weight: 78 Adj. 205-day Wt: 678

TC Gridiron 258
TC GRIDIRON 782
TC Quality 3161

TAU Gunnison 106R
TAU MISS GUNNISON 106R 7109T
TAU Miss Power Pac 9070 445P

| CE | BW | WW | YW | Milk | TM | CED |
|----|-----|----|----|------|----|-----|
| 9 | 0.5 | 62 | 91 | 23 | 54 | 6.5 |

250A-Homozygous Black, Double Polled son of TC Gridiron 782 that is also a maternal brother to our late herdsire 12W. His mom 7109T always comes through with a powerful calf and this bull is no slouch. Good growth and power in a younger package.

50% BLACK DOUBLE POLLED BULL

Lot 94 **TAU MR TOP GUN 196A**

★ Calved: February 23, 2013 ★ Tattoo: TAU 196A ★ Reg. #: AMGV1267887

Birth Weight: 80 Adj. 205-day Wt: 631

TAU Mr Grid Topper 43T
TAU TOP GUN 292Y
TAU Ms N Bar Ext 4153P

CPH Glacier Chateau 744
TAU MS GLACIER CHATEAU 4148P
TAU Ms Power 743G

| CE | BW | WW | YW | Milk | TM | CED |
|----|-----|----|----|------|----|------|
| 8 | 0.5 | 66 | 96 | 22 | 55 | 10.0 |

196A-Black, Double Polled. 196A is out of one of the most powerful and attractive cows on the place, and when you couple this with the power of his sire there is no doubt he will be a stout herdsire.



Lot 95

50% HOMOZYGOUS BLACK POLLED BULL

Lot 96 **TAU MR TOTAL RIGHT 247A**

★ Calved: March 6, 2013 ★ Tattoo: TAU 247A ★ Reg. #: AMGV1256613

Birth Weight: 89 Adj. 205-day Wt: 749

TC Total 410
DMRS MR TC TOTAL 048X
DMRS Rikki 52R

GMCC Ruppel Gunnison N31
TAU MS GUNNISON 587R
TAU Ms Dateline 283

| CE | BW | WW | YW | Milk | TM | CED |
|----|-----|----|----|------|----|-----|
| 11 | 0.1 | 67 | 98 | 31 | 65 | 5.8 |

247A- Homozygous Black. 247A is a growthy herdsire prospect that goes back to TC Total and is out of another great Gunnison daughter. Here is a bull that can make females, or produce growthy feeders. Check out the weaning weight on this one. He hit the scales at 749 pounds.

**All weaning weights
are produced with
mama's milk and grass--
not put on artificially
by creep feed.
A true testament to what
the cow and calf can do.**

38% POLLED BLACK HEIFER

Lot 98 | **TAU MS IN FOCUS 221Z**

★ Calved: January 29, 2012 ★ Tattoo: TAU 221Z ★ Reg. #: AMGV1215911
Birth Weight: 77 **Adj. 205-day Wt: 666**

S A F Focus of E R
MYTTY IN FOCUS
 Mytty Countess 906

 TAU Mr Sleepy 204P
TAU MS SLEEPY 204P 0171X
 TAU Ms Gunnison 7116T

| CE | BW | WW | YW | Milk | TM | CED |
|----|-----|----|-----|------|----|------|
| 15 | 0.3 | 72 | 110 | 25 | 61 | 11.3 |

AI'd 5-3 to DJS Daringer, due March 20

88% POLLED BLACK HEIFER

Lot 99 | **TAU MS GUNNISON 217Z**

★ Calved: January 29, 2012 ★ Tattoo: TAU 217Z ★ Reg. #: AMGV1215908
Birth Weight: 79 **Adj. 205-day Wt: 612**

RUP Lazy TV Hotfudge J357
RUPPLE GUNNISON N31
 Ruppel 919L

 HYEK Black Impact 3960N
TAU MS BLACK IMPACT 078X
 Ms New Frontier 574R

| CE | BW | WW | YW | Milk | TM | CED |
|----|-----|----|----|------|----|-----|
| 14 | 1.5 | 63 | 85 | 28 | 59 | 4 |

AI'd 5-18 to TAU In Focus 22Z, due March 20

50% POLLED BLACK HEIFER

Lot 100 | **TAU MS BISMARCK 228Z**

★ Calved: January 30, 2012 ★ Tattoo: TAU 228Z ★ Reg. #: AMGV1215928
Birth Weight: 80 **Adj. 205-day Wt: 656**

G A R Grid Maker
S A V BISMARCK 5682
 S A V Abigale 0451

 BABR Tsunami 447P
TAU MS TSUNAMI 722T
 TAU Miss Megan 427D

| CE | BW | WW | YW | Milk | TM | CED |
|----|-----|----|----|------|----|------|
| 12 | 0.2 | 65 | 95 | 27 | 59 | 10.2 |

AI'd 5-15 to TAU In Focus 22Z, due March 5

50% POLLED BLACK HEIFER

Lot 101 | **TAU MS 43T 233Z**

★ Calved: January 30, 2012 ★ Tattoo: TAU 233Z ★ Reg. #: AMGV1215976
Birth Weight: 60 **Adj. 205-day Wt: 631**

TC Grid Topper 355
TAU MR GRID TOPPER 43T
 TAU Miss Ty 3130N

 Hyline Right Time 338
TAU MISS HYLINE 856U
 TAU Miss Freedom 190L

| CE | BW | WW | YW | Milk | TM | CED |
|----|-----|----|----|------|----|-----|
| 10 | 1.5 | 66 | 98 | 17 | 50 | 7.0 |

AI'd 4-22 to Gunnison, due February 2

50% POLLED BLACK HEIFER

Lot 102 | **TAU MS BISMARCK 254Z**

★ Calved: February 2, 2012 ★ Tattoo: TAU 254Z ★ Reg. #: AMGV1267907
Birth Weight: 79 **Adj. 205-day Wt: 642**

G A R Grid Maker
S A V BISMARCK 5682
 S A V Abigale 0451

 SEPT Rodeo Drive J14
TAU MISS RODEO DRIVE 267M
 TAU Ms Bud of 404D 928J

| CE | BW | WW | YW | Milk | TM | CED |
|----|-----|----|-----|------|----|-----|
| 11 | 0.5 | 70 | 107 | 22 | 57 | 9.3 |

AI'd 5-23 to Final Answer, due March 15

50% POLLED BLACK HEIFER

Lot 103 | **TAU MS GRID TOPPER 43T 256Z**

★ Calved: February 7, 2012 ★ Tattoo: TAU 256Z ★ Reg. #: AMGV1268001
Birth Weight: 78 **Adj. 205-day Wt: 650**

TC Grid Topper 355
TAU MR GRID TOPPER 43T
 TAU Miss Ty 3130N

 TJB Sleepy 161F ET
TAU SLEEPY 5153R
 T G A Extraordinary Ext 580E

| CE | BW | WW | YW | Milk | TM | CED |
|----|-----|----|----|------|----|-----|
| 9 | 1.4 | 67 | 98 | 15 | 49 | 10 |

AI'd 5-20 to TAU In Focus 22Z, due March 25

50% POLLED BLACK HEIFER

Lot 104 | **TAU MS WINDY 260Z**

★ Calved: February 3, 2012 ★ Tattoo: TAU 260Z ★ Reg. #: AMGV1267908
Birth Weight: 55 **Adj. 205-day Wt: 628**

A A R Really Windy 1205
H A R B WINDY 702 JH
 H A R B Black Lady 073 J H

 PPFG PCCI Power Pac 13F
TAU MISS POWER PAC 13N
 TAU Miss Rodeo Drive 1152L

| CE | BW | WW | YW | Milk | TM | CED |
|----|-----|----|----|------|----|-----|
| 12 | 0.3 | 62 | 96 | 25 | 56 | 7.9 |

AI'd 4-30 to Sam, due February 10

50% POLLED BLACK HEIFER

Lot 105 | **TAU MS WESTERN HAULER 273**

★ Calved: February 4, 2012 ★ Tattoo: TAU 273Z ★ Reg. #: AMGV1220580
Birth Weight: 73 **Adj. 205-day Wt: 617**

JRI Great Western 254N68 ET
EBY WESTERN HAULER 028S
 Lyons Delia Beauty 2028

 TC Freedom 104
TAU MISS TC FREEDOM 892U
 TAU Ms Blacksmith 964J

| CE | BW | WW | YW | Milk | TM | CED |
|----|-----|----|----|------|----|-----|
| 11 | 0.1 | 62 | 96 | 31 | 62 | 8.1 |

AI'd 5-3 to Gunnison, due February 13

All bred heifers are AI bred then pasture exposed from 5-26 until 7-10 to TAU Mr Final Answer 259Y Registration #1185210.

38% POLLED BLACK HEIFER

Lot 106 **TAU MS UPWARD 295Z**

★ Calved: February 7, 2012 ★ Tattoo: TAU 295Z ★ Reg. #: AMGV1220759

Birth Weight: 78 **Adj. 205-day Wt: 648**

Connealy Onward

SITZ UPWARD 307R

Sitz Henrietta Pride 81M

Rupple Gunnison N31

TAU MS GUNNISON 5100R

Ms Pepper 835H

| CE | BW | WW | YW | Milk | TM | CED |
|----|-----|----|-----|------|----|-----|
| 12 | 1.3 | 79 | 128 | 36 | 75 | 7 |

AI'd 4-29 to Gunnison, due February 8

50% POLLED BLACK HEIFER

Lot 107 **TAU MS TUNED IN 282Z**

★ Calved: February 6, 2012 ★ Tattoo: TAU 282Z ★ Reg. #: AMGV1220597

Birth Weight: 78 **Adj. 205-day Wt: 566**

TC Grid Topper 355

TAU TUNED IN 55T

TAU Miss Freedom 306N

TAU Krugerrand 70M

TAU MS KRUGERRAND 70M 8228U

TAU Miss Freedom 208M

| CE | BW | WW | YW | Milk | TM | CED |
|----|-----|----|-----|------|----|-----|
| 9 | 1.1 | 61 | 100 | 14 | 45 | 8.9 |

AI'd 4-23 to Freedom, due February 2

50% POLLED BLACK HEIFER

Lot 108 **TAU MS UPWARD 2021Z**

★ Calved: February 11, 2012 ★ Tattoo: TAU 2021Z ★ Reg. #: AMGV1220806

Birth Weight: 80 **Adj. 205-day Wt: 595**

Connealy Onward

SITZ UPWARD 307R

Sitz Henrietta Pride 81M

TAU Mr Sleepy 204P

TAU MS SLEEPY 6125S

TAU Miss Freedom 3218N

| CE | BW | WW | YW | Milk | TM | CED |
|----|-----|----|-----|------|----|-----|
| 10 | 1.1 | 76 | 125 | 33 | 71 | 8.6 |

AI'd 5-2 to Gunnison, due February 12

50% POLLED BLACK HEIFER

Lot 109 **TAU MS ABERDEEN 2048Z**

★ Calved: February 15, 2012 ★ Tattoo: TAU 2048Z ★ Reg. #: AMGV1220843

Birth Weight: 75 **Adj. 205-day Wt: 660**

C R A Bextor 872 5205 608

TC ABERDEEN 759

TC Blackbird 4034

TAU Mr Power Pac 13F 404M

TAU POWER PAC 404M 585R

TAU Miss Blacksmith 1189L

| CE | BW | WW | YW | Milk | TM | CED |
|----|------|----|-----|------|----|-----|
| 13 | -0.3 | 70 | 104 | 37 | 72 | 8.8 |

AI'd 4-29 to Gunnison, due February 9

25% POLLED BLACK HEIFER

Lot 110 **TAU MS GRID TOPPER 43T 2060Z**

★ Calved: February 18, 2012 ★ Tattoo: TAU 2060Z ★ Reg. #: AMGV1268050

Birth Weight: 78 **Adj. 205-day Wt: NA**

TC Grid Topper 355

TAU MR GRID TOPPER 43T

TAU Miss Ty 3130N

TAU 4125P

| CE | BW | WW | YW | Milk | TM | CED |
|----|-----|----|----|------|----|-----|
| 10 | 1.3 | 67 | 96 | 18 | 52 | 6.6 |

AI'd 5-1 to TAU In Focus 22Z, due February 10

50% POLLED BLACK HEIFER

Lot 111 **TAU MS FINAL ANSWER 2070Z**

★ Calved: February 19, 2012 ★ Tattoo: TAU 2070Z ★ Reg. #: AMGV1220929

Birth Weight: 81 **Adj. 205-day Wt: 599**

Sitz Traveler 8180

S A V FINAL ANSWER 0035

S A V Emulous 8145

SLC Freedom 178F ET

TAU FREEDOM 439P

TAU Miss Dr Pepper 2221M

| CE | BW | WW | YW | Milk | TM | CED |
|----|-----|----|-----|------|----|-----|
| 13 | 0.1 | 72 | 109 | 23 | 59 | 9.7 |

AI'd 5-23 to Gunnison, due March 25

25% POLLED BLACK HEIFER

Lot 112 **TAU MS FINAL ANSWER 2079Z**

★ Calved: February 20, 2012 ★ Tattoo: TAU 2079Z ★ Reg. #: AMGV1268051

Birth Weight: 68 **Adj. 205-day Wt: 642**

Sitz Traveler 8180

S A V FINAL ANSWER 0035

S A V Emulous 8145

BABR Tsunami 447P

TAU 0202X

Bink 541

| CE | BW | WW | YW | Milk | TM | CED |
|----|------|----|-----|------|----|------|
| 17 | -2.4 | 65 | 110 | 23 | 55 | 10.4 |

AI'd 5-26 to Freedom, due March 25

38% POLLED BLACK HEIFER

Lot 113 **TAU MS VIRGINIAN 2074Z**

★ Calved: February 20, 2012 ★ Tattoo: TAU 2074Z ★ Reg. #: AMGV1220936

Birth Weight: 65 **Adj. 205-day Wt: 558**

Connealy Virginian 681

SDCC VIRGINIAN 318T

Plattemere Queen W 423

SGRI Honor Roll S232

TAU MS HONOR ROLL 9103W

TAU Ms Gunnison 6132S

| CE | BW | WW | YW | Milk | TM | CED |
|----|------|----|----|------|----|-----|
| 12 | -0.7 | 55 | 81 | 24 | 51 | 7.7 |

AI'd 5-1 to Final Answer, due March 10

All bred heifers are AI bred then pasture exposed from 5-26 until 7-10
to TAU Mr Final Answer 259Y Registration #1185210.

BRED HEIFERS

50% POLLED BLACK HEIFER

Lot 114 *TAU MS 12W 2080Z*

★ Calved: February 20, 2012 ★ Tattoo: TAU 2080Z ★ Reg. #: AMGV1220941

Birth Weight: 86 Adj. 205-day Wt: 698

Bon View New Design 1407
TAU MR NEW DESIGN 12W
TAU Miss Gunnison 106R 7109T

S A V Final Answer 0035
TAU MS FINAL ANSWER 900W
TAU Miss Tsunami 739T

| CE | BW | WW | YW | Milk | TM | CED |
|----|-----|----|-----|------|----|-----|
| 13 | 0.0 | 69 | 104 | 28 | 63 | 9.4 |

AI'd 4-29 to Gunnison, due February 9

50% POLLED BLACK HEIFER

Lot 115 *TAU MS FINAL PRODUCT 2082Z*

★ Calved: February 21, 2012 ★ Tattoo: TAU 2082Z ★ Reg. #: AMGV1220943

Birth Weight: 80 Adj. 205-day Wt: 619

Connealy Product 568
CONNEALY FINAL PRODUCT
Ebonista of Conanga 471

TAU Mr Sleepy 204P
TAU MISS SLEEPY 204P 798T
TAU Big Sky 191M

| CE | BW | WW | YW | Milk | TM | CED |
|----|-----|----|-----|------|----|------|
| 9 | 0.4 | 74 | 115 | 27 | 64 | 10.5 |

AI'd 5-2 to Final Answer, due February 12

50% POLLED BLACK HEIFER

Lot 116 *TAU MS 43T 2098Z*

★ Calved: February 25, 2012 ★ Tattoo: TAU 2098Z ★ Reg. #: AMGV1220975

Birth Weight: 85 Adj. 205-day Wt: 614

TC Grid Topper 355
TAU MR GRID TOPPER 43T
TAU Miss Ty 3130N

S S Traveler 6807 T510
TAU MS 6807 517R
TAU Miss Sleepy 3193N

| CE | BW | WW | YW | Milk | TM | CED |
|----|-----|----|----|------|----|-----|
| 11 | 1.0 | 66 | 98 | 16 | 48 | 8.8 |

AI'd 5-4 to TAU In Focus 22Z, due February 14

63% POLLED BLACK HEIFER

Lot 117 *TAU MS FREEDOM 2103Z*

★ Calved: February 26, 2012 ★ Tattoo: TAU 2103Z ★ Reg. #: AMGV1220979

Birth Weight: 80 Adj. 205-day Wt: 750

VAA Leachman New Day 205B
SLC FREEDOM 178F ET
BB Miss 61Y

Mytty In Focus
TAU MS IN FOCUS 034X
TAU Ms Sleepy 204P 8250U

| CE | BW | WW | YW | Milk | TM | CED |
|----|-----|----|-----|------|----|-----|
| 11 | 1.7 | 75 | 112 | 19 | 57 | 9.6 |

AI'd 5-23 to TAU In Focus 22Z, due March 15

50% POLLED BLACK HEIFER

Lot 118 *TAU MS 43T 2113Z*

★ Calved: February 28, 2012 ★ Tattoo: TAU 2113Z ★ Reg. #: AMGV1267905

Birth Weight: 80 Adj. 205-day Wt: 643

TC Grid Topper 355
TAU MR GRID TOPPER 43T
TAU Miss Ty 3130N

BAGC Mr Ragi 4N
BAG MISS 4N 113S
BAG Miss RA61 1N

| CE | BW | WW | YW | Milk | TM | CED |
|----|------|----|----|------|----|-----|
| 13 | -0.2 | 55 | 76 | 18 | 45 | 7.3 |

AI'd 5-18 to TAU In Focus 22Z, due February 28

75% POLLED RED HEIFER

Lot 119 *TAU MS FANNY 2116Z*

★ Calved: February 29, 2012 ★ Tattoo: TAU 2116Z ★ Reg. #: AMGV1267910

Birth Weight: 87 Adj. 205-day Wt: 636

GMCC Ruppel Gunnison N31
TAU MR HY-PER ACTIVE 60W ET
TAU Ms Sleepy 920J

TC Gridiron 258
TAU MS GRIDIRON 0179X
TAU Miss Freedom 307N

| CE | BW | WW | YW | Milk | TM | CED |
|----|-----|----|----|------|----|-----|
| 12 | 2.4 | 65 | 94 | 27 | 59 | 8.8 |

AI'd 4-29 to In Focus, due March 15

50% POLLED BLACK HEIFER

Lot 120 *TAU MS GRID IRON 2119Z*

★ Calved: March 2, 2012 ★ Tattoo: TAU 2119Z ★ Reg. #: AMGV1268002

Birth Weight: 80 Adj. 205-day Wt: 630

Sitz Traveler 8180
TC GRIDIRON 782
S A V Emulous 8145

TAU Gunnison 106R
TAU MS GUNNISON 106R 8192U
TAU Ms Dr Pepper 081K

| CE | BW | WW | YW | Milk | TM | CED |
|----|-----|----|----|------|----|-----|
| 9 | 0.9 | 63 | 94 | 23 | 55 | 5.1 |

AI'd 4-28 to Final Answer, due February 8



All bred heifers are AI bred then pasture exposed from 5-26 until 7-10 to TAU Mr Final Answer 259Y Registration #1185210.

50% POLLED BLACK HEIFER

Lot 121 **TAU MS VIRGINIAN 2140Z**

★ Calved: March 8, 2012 ★ Tattoo: TAU 2140Z ★ Reg. #: AMGV1221026

Birth Weight: 77 **Adj. 205-day Wt: 651**

Connealy Virginian 681

SDCC VIRGINIAN 318T

Plattemere Queen W 423

GMCC Ruppel Gunnison N31

TAU MS GUNNISON 657S

TAU Miss Benett Bonus 4120P

| CE | BW | WW | YW | Milk | TM | CED |
|----|-----|----|-----|------|----|-----|
| 13 | 0.7 | 67 | 100 | 26 | 59 | 8.0 |

AI'd 5-26 to TAU In Focus 22Z, due March 10

38% POLLED BLACK HEIFER

Lot 122 **TAU MS TC 782 2154Z**

★ Calved: March 12, 2012 ★ Tattoo: TAU 2154Z ★ Reg. #: AMGV1221049

Birth Weight: 80 **Adj. 205-day Wt: 566**

TC Gridiron 258

TC GRIDIRON 782

TC Quality 3161

TAU T G TY 313L

TAU MISS TY 3130N

TAU Freedom 102L

| CE | BW | WW | YW | Milk | TM | CED |
|----|-----|----|----|------|----|-----|
| 10 | 0.1 | 59 | 88 | 17 | 47 | 6.7 |

AI'd 5-4 to DJS Daringer, due February 8

75% POLLED BLACK HEIFER

Lot 124 **TAU MISS GUNSLINGER 2160Z**

★ Calved: March 14, 2012 ★ Tattoo: TAU 2160Z ★ Reg. #: AMGV1268061

Birth Weight: 80 **Adj. 205-day Wt: 660**

SGRI Honor Roll S232

TAU GUNSLINGER 19U

TAU Gunnison 5151R

CPH Glacier Chateau 744

TAU MISS CHATEAU 4125P

TAU Miss Dr Pepper 2158M

| CE | BW | WW | YW | Milk | TM | CED |
|----|-----|----|----|------|----|-----|
| 7 | 2.4 | 66 | 90 | 28 | 60 | 7.2 |

AI'd 5-23 to In Focus, due March 25

50% POLLED BLACK HEIFER

Lot 123 **TAU MS LEGEND 2155Z**

★ Calved: March 13, 2012 ★ Tattoo: TAU 2155Z ★ Reg. #: AMGV1221050

Birth Weight: 83 **Adj. 205-day Wt: 646**

SCC Legend 542

DMRS MR LEGEND 007X

DMRS Miss T510 802U

SLC Freedom 178F ET

TAU MS FREEDOM 802U

TAU Ms Onix 6109S

| CE | BW | WW | YW | Milk | TM | CED |
|----|------|----|----|------|----|-----|
| 12 | -0.7 | 54 | 80 | 21 | 48 | 6.6 |

AI'd 4-29 to Lazy TV Sam, due February 10

50% POLLED BLACK HEIFER

Lot 125 **TAU MS 2079Z**

★ Calved: February 20, 2012 ★ Tattoo: TAU 2079Z ★ Commercial

Birth Weight: 68 **Adj. 205-day Wt: 555**

Sitz Traveler 8180

S A V FINAL ANSWER 0035

S A V Emulous 8145

SDCC Virginian 318T

TAU MISS VIRGINIAN 0202W

Miss Freedom

| CE | BW | WW | YW | Milk | TM | CED |
|------|----|-----|----|------|----|-----|
| -2.8 | 62 | 100 | 20 | | | |

AI'd 5-26 to Freedom, due March 25

All bred heifers are AI bred then pasture exposed from 5-26 until 7-10 to TAU Mr Final Answer 259Y Registration #1185210.

Gelbvieh females have maternal superiority, longevity, milk, less mature size

Have a Great BEEF Experience with Traeger.



Taste - Food tastes better when cooked with pure wood pellets!

Smoke - Flip a switch and now you own the best smoker!



Cooks Better - No need to babysit this grill- fully automatic. Fewer flare-ups!



Safe - Far safer than gas or charcoal! No gas explosions, no hot coals. Safe, "politically correct" all natural, hardwood barbecue pellets!

Environmentally Friendly - Wood pellets are a clean-burning, 100% natural, renewable resource.

Purchase from the Taubenheims

BRED HEIFERS

BALANCER HEIFERS

| LOT | TATOO | REG. # | SIRE | DAM | DAM COLOR | BD | BW | WW | EPD | | | |
|-----|-------|------------|-------------------------------|-----------------------------|--------------|---------|----|-----|------|----|------|----|
| | | | | | | | | | BW | WW | MILK | |
| 126 | 309A | 1256109 | MYTTY IN FOCUS | TAU MS BLACK IMPACT 1081Y | BLACK | 1-19-13 | 60 | 543 | -3.2 | 59 | 104 | 25 |
| 127 | 327A | 1250094 | GMCC RUPPLE GUNNISON N31 | TAU MS TSUNAMI 1016Y | BLACK | 1-24-13 | 70 | 518 | 0.5 | 58 | 87 | 28 |
| 128 | 341A | 1250114 | ELK CK WILD BILL 42U | TAU MS VIRGINIAN 318T 059X | BLACK | 1-31-13 | 82 | 650 | 1.9 | 67 | 105 | 25 |
| 129 | 355A | 1250373 | HOOVER DAM | TAU FREEDOM 426P | BLACK | 2-2-13 | 80 | 517 | -0.1 | 51 | 87 | 30 |
| 130 | 361A | 1250280 | CONNELLY FINAL PRODUCT | TAU MS KRUGERRAND 70M 7165T | BLACK | 2-3-13 | 80 | 607 | 0.0 | 67 | 111 | 28 |
| 131 | 387A | 1267875 | TAU MR BLACK SENSATION 271YET | TAU MS DATELINE 283 | BLACK | 2-6-13 | 65 | 575 | 0.1 | 58 | 87 | 25 |
| 132 | 388A | 1267886 | TAU MR BLACK SENSATION 271YET | TAU MS DATELINE 283 | BLACK | 2-6-13 | 65 | 582 | 0.1 | 58 | 87 | 25 |
| 133 | 389A | 1250338 | BABR TSUNAMI 447P | TAU MISS GRIDIRON 9115W | BLACK | 2-6-13 | 85 | 677 | 1.7 | 65 | 92 | 26 |
| 134 | 395A | 1250455 | CONNELLY CONSENSUS 7229 | TAU MS TSUNAMI 6140S | BLACK | 2-6-13 | 78 | 559 | 0.4 | 66 | 105 | 21 |
| 135 | 3002A | 1268006 | CTR GOOD NIGHT 715T | TAU MISS BUSTER 4144P | BLACK | 2-8-13 | 80 | 600 | -0.9 | 59 | 85 | 23 |
| 136 | 3010A | 1250480 | TAU MR GRIDIRON 250Y | TAU MS RED ROCK 7237T | BLACK | 2-9-13 | 80 | 579 | 0.7 | 59 | 91 | 21 |
| 137 | 3021A | 1256129 | CONNELLY CONSENSUS 7229 | TAU MS TSUNAMI 7203T | BLACK | 2-11-13 | 84 | 600 | 0.6 | 71 | 107 | 20 |
| 138 | 3027A | 1256142 | TAU DR PEPPER 29D | TAU MS GUNNISON 106R 7163T | BLACK | 2-11-13 | 78 | 584 | 1.5 | 62 | 82 | 20 |
| 139 | 3048A | 1256390 | JKGF TRENDSETTER 55R ET | TAU MISS T510 2T22 737T | BLACK | 2-14-13 | 70 | 637 | -0.5 | 72 | 106 | 28 |
| 140 | 3049A | 1256396 | BABR TSUNAMI 447P | TAU MS ADVANCE 9189W | BLACK | 2-14-13 | 86 | 582 | 1.7 | 58 | 83 | 22 |
| 141 | 3056A | 1256405 | CONNELLY CONSENSUS 7229 | TAU MISS SLEEPY 3148N | BLACK | 2-15-13 | 75 | 656 | -0.1 | 69 | 106 | 21 |
| 142 | 3065A | 1256420 | DMRS MR TC TOTAL 048X | TAU MS FINAL ANSWER 985W | BLACK | 2-16-13 | 82 | 628 | 1.2 | 75 | 115 | 29 |
| 143 | 3067A | 1267888 | CTR GOOD NIGHT 715T | TAU MISS ALLIANCE 6595 748T | BLACK | 2-17-13 | 82 | 608 | 0.3 | 64 | 95 | 28 |
| 144 | 3076A | 1256464 | BABR TSUNAMI 447P | TAU MISS IN FOCUS 926W | BLACK | 2-18-13 | 83 | 620 | 1.3 | 60 | 88 | 25 |
| 145 | 3086A | 1256487 | TAU MR GRIDIRON 250Y | TAU MISS TRAVELER 2T22 703T | BLACK | 2-22-13 | 85 | 616 | 0.3 | 60 | 106 | 25 |
| 146 | 3094A | 1256502 | TAU MR GRID TOPPER 43T | TAU MS IN FOCUS 018X | BLACK | 2-23-13 | 78 | 605 | 0.3 | 69 | 101 | 16 |
| 147 | 3099A | 1256519 | MR TC TOTAL 048X | MS FINAL ANSWER 900W | BLACK | 2-24-13 | 79 | 549 | -0.2 | 65 | 107 | 32 |
| 148 | 3101A | 1256517 | TAU MR NEW DESIGN 12W | TAU MISS WINNEPEG 9111W ET | BALCK | 2-24-13 | 83 | 537 | 2.5 | 65 | 99 | 25 |
| 149 | 3108A | 1256555 | TAU MR NEW DESIGN 12W | TAU MS KRUGERRAND 70M 7122T | BLACK | 2-27-13 | 82 | 654 | 1.5 | 59 | 92 | 27 |
| 150 | 3114A | 1256558 | TAU MR NEW DESIGN 12W | TAU MS GRID TOPPER 9165W | BLACK | 2-28-13 | 82 | 640 | 2.1 | 70 | 112 | 19 |
| 151 | 3132A | 1256601 | TC GRIDIRON 782 | TAU MS GUNNISON 573R | BLACK | 3-7-13 | 84 | 632 | 0.5 | 60 | 90 | 23 |
| 152 | 3133A | 1250099 | TAU MR GRID TOPPER 43T | TAU MS N BAR EXT 4153P | BLACK | 3-8-13 | 78 | 586 | 0.8 | 66 | 97 | 19 |
| 153 | 3138A | 1256643 | BABR TSUNAMI 447P | TAU MS ADVANCE 8263U | BLACK | 3-10-13 | 84 | 699 | 0.8 | 63 | 82 | 27 |
| 154 | 3139A | 1268003 | TAU AMHERST 238Y | TAU MS NEW DESIGN 878 303 | BLACK | 3-11-13 | 80 | 616 | 0.4 | 60 | 87 | 26 |
| 155 | 3145A | 1256648 | TAU MR NEW DESIGN 12W | TAU MS OLE'S OSCAR 0129X | BLACK | 3-12-13 | 80 | 611 | -0.4 | 57 | 88 | 27 |
| 156 | 3146A | 1256639 | DMRS MR TC TOTAL 048X | TAU MISS BANDO 841U | BLACK | 3-12-13 | 83 | 636 | 1.5 | 71 | 106 | 32 |
| 157 | 320A | COMMERCIAL | HYEK FIRST IMPRESSION | 134Y | BLACK | 1-24-13 | 65 | 534 | 3.0 | 59 | 105 | 26 |



New Generation AGA EPDs

The American Gelbvieh Association's (AGA) January 2013 EPDs are based on a new collaborative national cattle evaluation (NCE) with the American Simmental Association (ASA). Below is a summary of some of the enhancements to the AGA new generation EPDs, followed by trait averages and percentile charts.

Gelbvieh and Balancer® Share a Common Base with Simmental and Red Angus

Gelbvieh and Balancer EPDs are now on the same base with Simmental and Red Angus, which means that EPDs for each trait (except stayability) are directly comparable to ASA and Red Angus Association of America (RAAA) EPDs. This was a huge, progressive decision by the AGA Board of Directors, made to simplify bull selection for commercial producers.

Calving Ease and Calving Ease Daughters EPDs Converted to Industry Standard Terminology

For over 25 years, the AGA calving ease (CE) and calving ease daughter (CED) EPDs were reported in the form of a ratio. They are now reflected as percentages. Higher CE values equal fewer unassisted births from sires when mated to first-calf heifers. Higher CED EPDs indicate less calving difficulty from a sire's own first-calf daughters.

Multi-Breed EPDs Provide More Complete Balancer EPDs

The true multi-breed EPD NCE conducted by the ASA enables the inclusion of more progeny data from Red Angus and Angus sires, especially for the carcass traits.

Growth Traits are More Reliable

The new EPDs for weaning weight (WW), yearling weight (YW) and carcass weight (CW) are more reliable because the new statistical process accepts a wider age window for weaning weight. This is especially beneficial for breeders that wean calves early due to drought. Historically, weights from early-weaned calves were not included in the NCE.

Carcass Traits are Standardized

In recent years, Gelbvieh and Balancer carcass traits were adjusted to a fat end-point instead of an age endpoint like the rest of the industry. AGA's transition to age-adjusted carcass EPDs will eliminate the gaps in the U.S. Meat Animal Research Center's carcass EPD breed comparisons. This change also means that the days-to-finish (DtF) EPD is replaced by a fat (FT) EPD. A yield grade (YG) EPD is also new. For both FT and YG, lower EPDs are typically more favorable.

For questions or more information contact the AGA at 303-465-2333 or visit www.gelbvieh.org.

New EPD Averages for Active Sires

| | CE | BW | WW | YW | MK | TM | CED | ST | YG | CW | REA | MB | FT |
|----------|------|-----|----|----|----|----|-----|----|-------|----|------|-------|-------|
| Gelbvieh | 8.0 | 2.0 | 65 | 91 | 26 | 59 | 5.0 | 5 | -0.16 | 25 | 0.29 | -0.13 | -0.06 |
| Balancer | 10.4 | 0.6 | 62 | 97 | 24 | 55 | 6.6 | 4 | -0.08 | 28 | 0.33 | 0.27 | -0.02 |

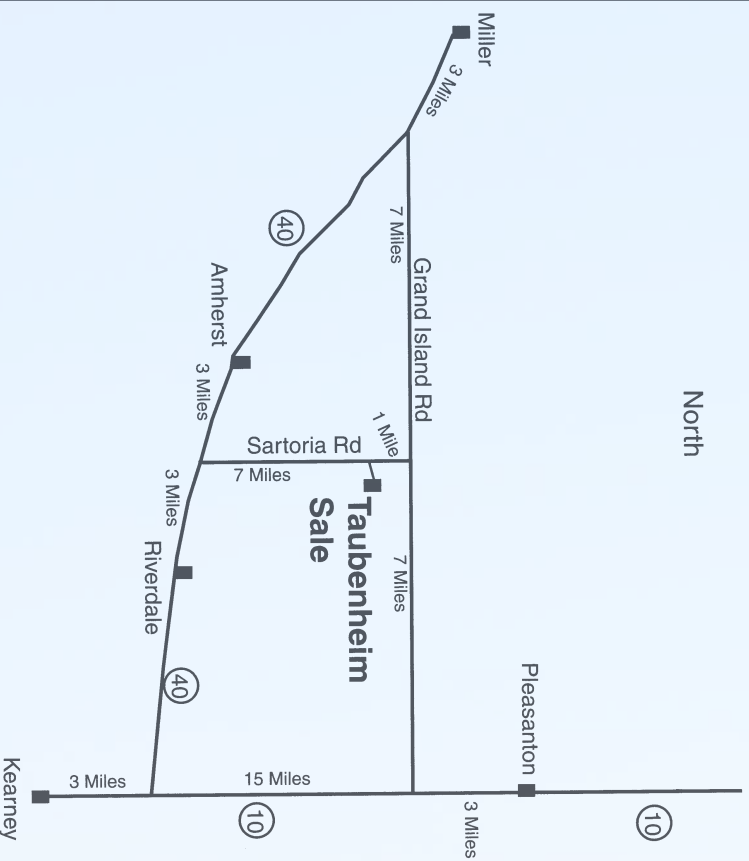
Gelbvieh EPD Percentile Chart

| Percentile | CE | BW | WW | YW | MK | TM | CED | ST | YG | CW | REA | MB | FT |
|------------|----|------|----|-----|----|----|-----|----|-------|----|------|-------|-------|
| 5 | 13 | -1.4 | 83 | 120 | 37 | 71 | 10 | 11 | -0.29 | 46 | 0.58 | 0.10 | -0.09 |
| 25 | 10 | 0.9 | 72 | 102 | 31 | 64 | 8 | 7 | -0.21 | 34 | 0.39 | -0.05 | -0.07 |
| 50 | 8 | 2.1 | 65 | 91 | 26 | 59 | 6 | 5 | -0.16 | 26 | 0.27 | -0.14 | -0.06 |
| 75 | 5 | 3.3 | 58 | 80 | 22 | 53 | 4 | 3 | -0.11 | 19 | 0.18 | -0.21 | -0.05 |
| 95 | 2 | 5.0 | 46 | 61 | 14 | 45 | 0 | 0 | -0.02 | 6 | 0.02 | -0.32 | -0.03 |

Balancer® EPD Percentile Chart

| Percentile | CE | BW | WW | YW | MK | TM | CED | ST | YG | CW | REA | MB | FT |
|------------|----|------|----|-----|----|----|-----|----|-------|----|-------|-------|-------|
| 5 | 16 | -2.8 | 80 | 128 | 34 | 67 | 11 | 9 | -0.26 | 49 | 0.71 | 0.63 | -0.06 |
| 25 | 13 | -0.6 | 69 | 109 | 28 | 60 | 9 | 5 | -0.15 | 36 | 0.47 | 0.38 | -0.04 |
| 50 | 10 | 0.7 | 63 | 97 | 24 | 55 | 7 | 4 | -0.08 | 28 | 0.32 | 0.25 | -0.03 |
| 75 | 8 | 1.9 | 55 | 84 | 20 | 50 | 5 | 2 | -0.01 | 20 | 0.18 | 0.13 | -0.01 |
| 95 | 5 | 3.7 | 44 | 67 | 14 | 44 | 1 | -1 | 0.09 | 7 | -0.02 | -0.01 | 0.02 |

Sale Facility at the Ranch



From: Amherst

3 Miles East on Hwy 40, 7 Miles North

Miller

3 Miles Southeast on Hwy 40

7 Miles East to Sartoria

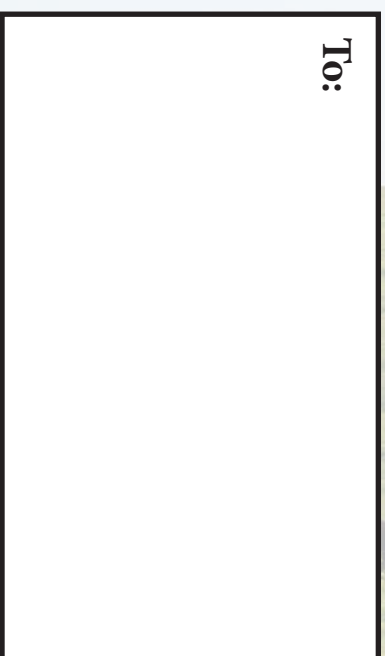
Pleasanton

3 Miles South to Grand Island Rd

7 Miles West to Sartoria Rd

Taubenheim Gelbvieh
23685 Sartoria Road
Amherst, NE 68812

To:



Please bring this catalog with you to the sale!