

# Taubenheim Gelbvieh

25th Annual  
Production Sale



**MONDAY**

**FEBRUARY 2, 2015**

**1:00 PM**

**SALE FACILITY AT THE RANCH**

**23685 SARTORIA RD. AMHERST, NE 68812**



Cattlemen and Cattlewomen,

It's that time of the year again, and we want to begin by saying hello from all of us at Taubenheim Gelbvieh. It is our pleasure to invite you to our 25th Annual Production Sale at the ranch on Monday February 2nd, 2015.

What a great year it has been for beef producers across the country. Timely rains and great weather for plant growth have helped many ranchers start to rebuild their cowherds. Also, with record prices in the cattle market cattlemen are seeing greater returns on their product. We have been pushing our feedlot calves to 1500 pounds at finish, and this is a testament to what our cattle can do. Simply put, pounds sell, and we are keeping our cowherd moderate and easy fleshing while adding pounds with increased muscle shape and natural thickness.

This year we are offering a stout made set of bulls that are correct in their skeletal build, easy fleshing, and powerfully constructed. We feel this group of bulls is one of the most complete sets from top to bottom that we have ever offered. You can look for our bulls to add pounds at weaning, increase feed efficiency, and add great maternal strength. We hope you are as pleased as we are with our group of bulls this year.

Calves are sired by a large selection of AI sires along with herdsires we have raised or purchased. Some of these sires include HYEK Black Impact, Ruppel Gunnison, TAU In Focus 22Z, TAU Grid Topper 43T, MYTTY In Focus, SAV Final Answer, and Connealy Consensus 7229. Our cowherd has been built through a strenuous selection process where we stack A.I and E.T. matings. In doing so, we give our customers the highest quality herdsires and replacement females that we know will be profitable for years to come.

Again this year we will be offering 45 bred heifers that have been ultra-sounded pregnant and 29 open females. These females are a great opportunity for you to take some of our genetics back to your own herd. You are welcome to stop by and view the bulls or females at your convenience, and there will always be someone at the farm to assist you.

Once again this year we will be exhibiting at the National Western Stock Show in Denver, Colorado. We will have a pen of five Balancers along with a pen of three Balancers in the yards, on the hill we will have a couple of bulls along with four heifers. We are definitely proud of the way our pens have come together this year and we are excited to show them in Denver. If you come to the Stock Show this year stop by and see us in the yards or on the hill.

We are very proud of the bulls and heifers and what they have to offer. There is something for every cattle operation in our offering. Whether you need black, red, calving ease, or growth traits, we can satisfy any need. At Taubenheim Gelbvieh our goal has always been to satisfy the customer and help you make a profit. We plan to do that in 2015 with added pounds, feed efficiency, and fertility.

We look forward to talking to you in the near future, and don't forget to mark your calendars for February 2nd.

Thank you,

The Taubenheim's

Dale and Jeannette  
308-826-4771

Mike, Renee, Tanner, Sydney, Seth, and Kale  
Mike: 308-233-4704 / Tanner: 308-224-7196

Justin and Janelle  
Justin: 308-293-0692



**Welcome to the 25<sup>th</sup> Annual  
Taubenheim Gelbvieh Production Sale  
Monday, February 2, 2015 1:00 p.m. (CST)  
Sale Facility At The Ranch  
23685 Sartoria Rd • Amherst, NE 68812**

**SELLING**  
**100 Bulls    29 Open Females    45 Bred Females**

**HERD HEALTH**

All bulls have had shots and been poured. Necessary health papers will be supplied with each sale animal.

**TRUCKING**

Free trucking on bulls of \$4,500 or more otherwise to central location.

**Terms of Sale: Cash**

**TAUBENHEIM GELBIEH FIRST SEASON BREEDING GUARANTEE**

Buyers of all bulls selling for \$4,000 or more injured the first breeding season, will have credit at the next sale at the value of the purchase price minus salvage value. Contact Taubenheim Gelbvieh promptly so the decision to return the bull to Taubenheim Gelbvieh or sold by buyer may be made. Breeding season is defined as the 90 day period following the first turnout of the bulls.

In the event of death of a bull during the first breeding season, a credit of 50% of the sale price will be applied at the next sale for a bull.

If you have a problem and are in need of a replacement for any reason, please contact Taubenheim Gelbvieh as we will be glad to be of service.

All announcements from block take precedence over all written material.  
  
Registration papers available.  
  
Retaining 1/2 semen rights on all bulls.

**Can't make the sale? Busy during the sale?**

**DVAuction**  
*Broadcasting Real-Time Auctions*

Never Miss An Auction Again!  
Watch & Bid online for FREE!

**Visit [www.DVAuction.com](http://www.DVAuction.com)  
and Register Today!**

For General Questions Please Contact Our Office:  
(402) 316-5460 or [support@dvauction.com](mailto:support@dvauction.com)

Taubenheim Gelbvieh is not responsible for any accidents.

**BULL BUYERS**  
**All bulls selling are eligible for free board until April 1, 2015**  
**In Case of Inclement Weather, Call Sale Day Phone  
or Listen to KRVN for Information**

**Livestock Press Representatives .....**  
High Plains Journal..... Rod Swaford, 620-338-7244  
Livestock Plus..... Jay Elfeldt, 308-293-3049  
Midwest Messenger..... Chris Beutler, 402-380-8244

**Motel Accommodations**  
Microtel Inn ..... 308-698-3003  
Hampton Inn..... 308-234-3400

**AUCTIONEER:** Tracy Harl, 46687 789th Rd, Loup City, NE 68853 402-469-3852

*Join us for complimentary sale day beef lunch cooked on a Traeger!*

**Sale Day Phone: 308-826-4771 / Cell: 308-627-5054/308-222-0138/308-233-4704**

**Jim Blackwell will be taking bids again at the above phone numbers.**

**FOR INFORMATION CONTACT:**

**Dale Taubenheim**  
23685 Sartoria Rd., Amherst, NE 68812  
308-826-4771 or 308-222-0138  
Email: [dtaubenheim@aol.com](mailto:dtaubenheim@aol.com)

**Mike Taubenheim**  
19035 Grand Island Rd., Amherst, NE 68812  
308-233-4704  
Justin: 308-293-0692 [j\\_tauby5@hotmail.com](mailto:j_tauby5@hotmail.com)

[www.taubenheimgelbvieh.com](http://www.taubenheimgelbvieh.com)

INFORMATION



PUREBRED POLLED BLACK BULL

**A CONNEALY CONSENSUS 7229**

Calved: January 15, 2009 ★ Tattoo: 9122

Birth Weight: 78 Adj. 205-day Wt: 817 Adj. 365-day Wt: 1420

KMK Alliance 6595 I87 ..... Sitz Alliance 6595  
 CONNEALY CONSENSUS ..... G A R Ext 916  
 Blinda of Conanga 004 ..... Rito 616 of 4B20 6807  
 ..... Blenda of Conanga 129  
 Woodhill Admiral 77K ..... S A F Focus of E R  
**BLUE LILLY OF CONANGA 16** ..... Woodhill Lass 344-1178  
 Blue Cash of Conanga 6020 ..... Connealy Timeline  
 ..... Blue Time of Conanga

—INDIVIDUAL EPDs—

CE: 3 BW: 2.2 WW: 63 YW: 104 Milk: 34 CEM: 4 RE: .90 MB: 1.01 Fat: .037

The A.I. sire that has taken the Angus breed by storm. We use Consensus 7229 to add muscle, thickness, and power. Calves are extremely massive and powerful with excellent carcass quality.



Connealy Consensus 7229

3/8 POLLED BLACK BULL

**B TAU MR GRID TOPPER 43T**

AMGV1036179 ★ Calved: February 2, 2007 ★ Tattoo: 43T

Birth Weight: 90 Adj. 205-day Wt: 591

TC GRID TOPPER 355 ..... G A R Grid Maker  
 ..... TC Pride 8067  
 TAU MISS TY 3130N ..... TAU T G Ty 313L  
 ..... TAU Freedom 102L

—INDIVIDUAL EPDs—

CE: 105 BW: -.3 WW: 42 YW: 87 Milk: 9 TMat: 30 Gest: -2.2 CED: 103

43T was a member of our 2008 Reserve National Champion Pen of 3 Balancers. He has really been doing the job for us, his progeny are flawless in their structure and balanced in their type, with plenty of rib and muscle. He makes them right.



TAU Mr Grid Topper 43T

PUREBRED POLLED BLACK BULL

**C HYEK BLACK IMPACT 3960N**

AMGV844875 ★ Calved: February 7, 2003 ★ Tattoo: 3960N

HYEK BLACK IMPULSE 1296L ..... ELK CK Scorpion 2343H ET  
 ..... OAKK Valley Lady 296J  
 HYEK BLACK RUBY 9604J ..... FHG Flying H Extra 150D  
 ..... HYEK Dottie F6048

—INDIVIDUAL EPDs—

CE: 106 BW: -1 WW: 41 YW: 68 Milk: 15 TMat: 36 Gest: -5.9 CED: 98

HYEK Black Impact is a bull that we turned to to make females and add power to our herd, and he most certainly has done that. He makes them functional and we will use him for years to come because of that fact.

PUREBRED POLLED BLACK BULL

**D GMCC RUPPLE GUNNISON N31**

AMGV854851 ★ Calved: January 12, 2003 ★ Tattoo: GMCCN31

Birth Weight: 86 Adj. 205-day Wt: 849 Adj. 365-day Wt: 1178

VRT RUP LAZY TV HOTFUDGEJ357 ..... WAC Fullback 011G  
 ..... VRT F091  
 RUP RUPPLE 919L ..... GKT Bud 11G  
 ..... RUP Ruppel J Precision 715J

—INDIVIDUAL EPDs—

CE: 107 BW: 0.7 WW: 37 YW: 63 Milk: 19 TMat: 38 Gest: -0.4 CED: 102

Homozygous black and homozygous polled herd sire we purchased from Corry Ruppel, to use as an outcross in our herd, and for cattlemen who have been using our bulls for several years. Gunnison is doing a great job of breeding desirable traits as you will see his calves come easy and are excellent in giving fleshing ability, muscle, and depth of rib. You will appreciate his calves sale day.

PUREBRED POLLED BLACK BULL

**E SAV FINAL ANSWER 0035**

13592905 ★ Calved: February 22, 2000 ★ Tattoo: 0035

Birth Weight: 69 Adj. 205-day Wt: 843 Adj. 365-day Wt: 1360

SITZ TRAVELER 8180 ..... G D A R Traveler 71  
 ..... Sitz Everelda Entense 1137  
 S A V EMULOUS 8145 ..... Bon View Bando 598  
 ..... S A V Sky Emulous 2124

—INDIVIDUAL EPDs—

BW: -1.0 WW: 61 YW: 104 Milk: 19

Final Answer is quite likely the most well rounded proven A.I. sire in existence today with his combination of low birth weight, good growth to a year, top 4% RE and unmatched maternal and fertility.



SAV Final Answer

PUREBRED POLLED BLACK BULL

**F MYTTY IN FOCUS 109**

AAA13880818 ★ Calved: February 18, 2001 ★ Tattoo: 109

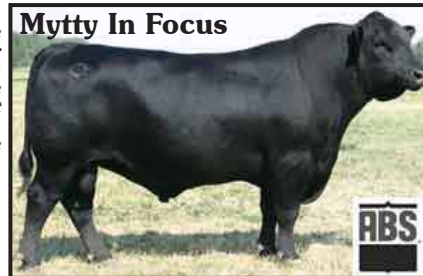
Birth Weight: 77 Adj. 205-day Wt: 766

SAF FOCUS OF ER ..... SAF Fame  
 ..... GDAR Forever Lady 246  
 MYTTY COUNTESS 906 ..... Sitz Alliance 6595  
 ..... Baldrige Countess 357

—INDIVIDUAL EPDs—

BW: -1.4 WW: 55 YW: 99 Milk: 25

Mytty In Focus is simply a cowman's bull. He was number one for registrations in the Angus breed in 2008, 2009, and 2010. In Focus is a bull that we have turned to to get calving ease in a consistent package. In Focus works for us, so let his sons go to work for you.



Mytty In Focus

PUREBRED POLLED BLACK BULL

**C HYEK BLACK IMPACT 3960N**

AMGV844875 ★ Calved: February 7, 2003 ★ Tattoo: 3960N

HYEK BLACK IMPULSE 1296L ..... ELK CK Scorpion 2343H ET  
 ..... OAKK Valley Lady 296J  
 HYEK BLACK RUBY 9604J ..... FHG Flying H Extra 150D  
 ..... HYEK Dottie F6048

—INDIVIDUAL EPDs—

CE: 106 BW: -1 WW: 41 YW: 68 Milk: 15 TMat: 36 Gest: -5.9 CED: 98

HYEK Black Impact is a bull that we turned to to make females and add power to our herd, and he most certainly has done that. He makes them functional and we will use him for years to come because of that fact.



HYEK Black Impact

94% PUREBRED HOMOZYGOUS BLACK HOMOZYGOUS POLLED BULL

**Lot 1** **TAU BLACKSHIRT 8B ET**

★ Calved: January 19, 2014 ★ Tattoo: TAU 8B ★ Reg. #: AMGV1288096

**Birth Weight: 78 Adj. 205-day Wt: 723**

HYEK Black Impulse 1296L

**HYEK BLACK IMPACT 3960N**

HYEK Black Ruby 9604J

TAU Gunnison 106R

**TAU MS GUNNISON 106R 8204U**

TAU Miss Big Sky 4183P

| CED | BW  | WW | YW | MK | TM | CEM | ST | YG   | CW | REA | MB   | FT   | FPI   |
|-----|-----|----|----|----|----|-----|----|------|----|-----|------|------|-------|
| 10  | 2.1 | 72 | 97 | 18 | 54 | -4  | 4  | -.62 | 30 | .68 | -.17 | -.07 | 65.77 |

8B- Homo Black, Homo Polled son of HYEK Black Impact and out of a great donor female. Blackshirt is a very stout featured, deep bodied, and sound structured bull. Couple this with a great set of epd's and there is no doubt 8B will make a great hersire and potential A.I. sire. He will be in Denver as our Purebred Futurity Bull.



Lot 1

75% PUREBRED BLACK DOUBLE POLLED BULL

**Lot 2** **TAU MR GUNNISON 71B**

★ Calved: February 8, 2014 ★ Tattoo: TAU 71B ★ Reg. #: AMGV1287238

**Birth Weight: 78 Adj. 205-day Wt: 681**

VRT RUP Lazy TV Hotfudge J357

**GMCC RUPPLE GUNNISON N31**

RUP Ruppel 919L

TAU Mr Grid Topper 43T

**TAU TAU MS 43T 280Z**

TAU Boyd On Target 823U

| CED | BW  | WW | YW | MK | TM | CEM | ST | YG  | CW | REA | MB  | FT   | FPI   |
|-----|-----|----|----|----|----|-----|----|-----|----|-----|-----|------|-------|
| 14  | 1.3 | 67 | 89 | 24 | 56 | 8   | 4  | -.4 | 24 | .74 | .09 | -.03 | 70.86 |

71B- Calving ease son of the great Gunnison bull. 71B will really stamp a set of calves with a great look and plenty of functionality.

75% PUREBRED HOMOZYGOUS BLACK DOUBLE POLLED BULL

**Lot 4** **TAU MR BIG DOG 82B**

★ Calved: February 9, 2014 ★ Tattoo: TAU 82B ★ Reg. #: AMGV1287260

**Birth Weight: 85 Adj. 205-day Wt: 693**

HYEK Black Impact 3960N

**PLA BIG DOG 101Y**

EGL P190

S S Traveler 6807 T510

**TAU MS 6807 516R**

TAU Freedom 305N

| CED | BW  | WW | YW  | MK | TM | CEM | ST | YG   | CW | REA | MB   | FT   | FPI   |
|-----|-----|----|-----|----|----|-----|----|------|----|-----|------|------|-------|
| 8   | 1.1 | 71 | 105 | 20 | 58 | 5   | 5  | -.32 | 33 | .41 | -.03 | -.05 | 68.77 |

82B- A son of the Purebred Futurity winning Big Dog, 82B is a high performing calf that has a great set of numbers to boot.

75% PUREBRED HOMOZYGOUS BLACK DOUBLE POLLED BULL

**Lot 5** **TAU MR GUNNISON 94B**

★ Calved: February 11, 2014 ★ Tattoo: TAU 94B ★ Reg. #: AMGV1287278

**Birth Weight: 90 Adj. 205-day Wt: 750**

VRT RUP Lazy TV Hotfudge J357

**GMCC RUPPLE GUNNISON N31**

RUP Ruppel 919L

H A R B Windy 702 JH

**TAU TAU MS WINDY 2047Z**

TAU Power Pac 9070 487P

| CED | BW  | WW | YW | MK | TM | CEM | ST | YG   | CW | REA | MB   | FT   | FPI   |
|-----|-----|----|----|----|----|-----|----|------|----|-----|------|------|-------|
| 16  | 0.8 | 68 | 86 | 29 | 59 | 8   | 4  | -.33 | 22 | .55 | -.02 | -.01 | 69.64 |

94B- A high weaning son of Gunnison backed by a very good Windy daughter. This calf is great on chart for calving ease, and his 750lb 205 day weight indicates he will add pounds too, that's a great combination for success.

75% PUREBRED HOMOZYGOUS BLACK DOUBLE POLLED BULL

**Lot 3** **TAU MR GUNNISON 341B**

★ Calved: February 9, 2014 ★ Tattoo: TAU 341B ★ Reg. #: AMGV1301737

**Birth Weight: 90 Adj. 205-day Wt: 720**

VRT RUP Lazy TV Hotfudge J357

**GMCC RUPPLE GUNNISON N31**

RUP Ruppel 919L

EBY Western Hauler 028S

**TAU TAU MS WESTERN HAULER 273**

TAU Miss TC Freedom 892U

| CED | BW  | WW | YW | MK | TM | CEM | ST | YG   | CW | REA | MB   | FT   | FPI   |
|-----|-----|----|----|----|----|-----|----|------|----|-----|------|------|-------|
| 14  | 1.5 | 62 | 88 | 31 | 62 | 6   | 5  | -.42 | 22 | .71 | -.01 | -.04 | 66.21 |

341B- Another son of Gunnison. This calf is extremely stout and powerful and he will definitely add pounds to a calf crop.

**All weaning weights  
are produced with  
mama's milk and grass--  
not put on artificially  
by creep feed.  
A true testament to what  
the cow and calf can do.**

75% PUREBRED HOMOZYGOUS BLACK DOUBLE POLLED BULL

**Lot 6** **TAU MR GUNNISON 103B**

★ Calved: February 11, 2014 ★ Tattoo: TAU 103B ★ Reg. #: AMGV1287289

**Birth Weight: 78 Adj. 205-day Wt: 726**

VRT RUP Lazy TV Hotfudge J357

**GMCC RUPPLE GUNNISON N31**

RUP Ruppel 919L

S A V Bismarck 568Z

**TAU TAU MS BISMARCK 2096Z**

TAU TAU Freedom 452P

| CED | BW  | WW | YW | MK | TM | CEM | ST | YG   | CW | REA | MB   | FT   | FPI   |
|-----|-----|----|----|----|----|-----|----|------|----|-----|------|------|-------|
| 16  | 0.8 | 68 | 88 | 31 | 63 | 10  | 5  | -.46 | 22 | .82 | -.04 | -.04 | 67.71 |

103B- Another Gunnison son that is great in the birth weight and calving ease department. 103B is sure shot calving ease with a great look and plenty of growth.

PUREBRED GELBVIEWH



94% PUREBRED DOUBLE BLACK DOUBLE POLLED BULL

**Lot 7** **TAU MR REVOLUTION 18B ET**

★ Calved: January 25, 2014 ★ Tattoo: TAU 18B ★ Reg. #: AMGV1288123

**Birth Weight: 82 Adj. 205-day Wt: 789**

KCF Bennett Kingpin K403  
**WOAK REVOLUTION 08T**  
 RLBG Tamara N006

GMCC Ruppel Gunnison N31  
**TAU MS GUNNISON 7211T ET**  
 TAU Ms Dr P of 516E 716G

| CED | BW  | WW | YW  | MK | TM | CEM | ST | YG   | CW | REA | MB  | FT   | FPI   |
|-----|-----|----|-----|----|----|-----|----|------|----|-----|-----|------|-------|
| 10  | 2.1 | 78 | 108 | 33 | 72 | 4   | 4  | -.36 | 36 | .47 | -.1 | -.07 | 71.46 |

18B- Here is a high performing son of Revolution and out of the great donor 7211T. Her calves have topped our sales for the past couple of years and this purebred is a larger framed calf that is extremely long bodied. There is no doubt that this sire's calves will be successful in today's market setting.



Lot 7

94% PUREBRED DOUBLE BLACK DOUBLE POLLED BULL

**Lot 8** **TAU MR BLACKJACK 31B ET**

★ Calved: January 30, 2014 ★ Tattoo: TAU 31B ★ Reg. #: AMGV1288126

**Birth Weight: 87 Adj. 205-day Wt: 900**

DFW Blackjack B538  
**WAC BLACKJACK 049F**  
 WAC 702A

TLR Cocoa 35C  
**TAU MS COCO 052KA 437D**  
 TAU 437D

| CED | BW  | WW | YW  | MK | TM | CEM | ST | YG   | CW | REA | MB   | FT   | FPI   |
|-----|-----|----|-----|----|----|-----|----|------|----|-----|------|------|-------|
| 6   | 1.1 | 78 | 102 | 37 | 76 | 10  | 4  | -.25 | 31 | .34 | -.26 | -.09 | 67.12 |

31B- A son of Blackjack 049F and out of our donor 052K, the mother of Kruggerrand 130P. This guy is a truck, he is so massive and powerful with a ton of muscle shape. Don't overlook his 900 lb weaning weight. Pounds sell and this guy will definitely add pounds to his calves.



Lot 8

75% PUREBRED DOUBLE BLACK DOUBLE POLLED BULL

**Lot 9** **TAU MR WILD BILL 4033B**

★ Calved: February 11, 2014 ★ Tattoo: TAU 4033B ★ Reg. #: AMGV1287283

**Birth Weight: 78 Adj. 205-day Wt: 797**

ELK CK Crazy Horse 138P  
**ELK CK WILD BILL 42U**  
 JOB Danell Greta 42L ET

TAU Mr Krugerrand 70M 130P  
**TAU MS KRUGGERAND 130P 127Y**  
 TAU Ms Hot Fudge 9133W

| CED | BW  | WW | YW  | MK | TM | CEM | ST | YG   | CW | REA | MB   | FT   | FPI   |
|-----|-----|----|-----|----|----|-----|----|------|----|-----|------|------|-------|
| 10  | 1.4 | 76 | 104 | 25 | 60 | 6   | 4  | -.14 | 33 | .41 | -.03 | -.04 | 71.04 |

4033B- A son of Wild Bill that definitely takes after his sire. We have used Wild Bill to add substance and growth to our cattle and that is exactly what 4033B will do. He posted a 797 lb weaning weight and ranks in the top of the breed for his weaning weight and yearling weight EPD's.

75% PUREBRED BLACK DOUBLE POLLED BULL

**Lot 11** **TAU MR WILD BILL 130B**

★ Calved: February 15, 2014 ★ Tattoo: TAU 130B ★ Reg. #: AMGV1287319

**Birth Weight: 85 Adj. 205-day Wt: 736**

ELK CK Crazy Horse 138P  
**ELK CK WILD BILL 42U**  
 JOB Danell Greta 42L ET

HXC HXC Conquest 4405P  
**TAU MS CONQUEST 1022Y**  
 TAU Ms Freedom 7238T

| CED | BW   | WW | YW | MK | TM | CEM | ST | YG   | CW | REA | MB   | FT   | FPI   |
|-----|------|----|----|----|----|-----|----|------|----|-----|------|------|-------|
| 14  | -.03 | 68 | 91 | 22 | 52 | 6   | 3  | -.17 | 22 | .38 | -.01 | -.04 | 69.46 |

130B- A son of Wild Bill that is very long bodied, level made and sound structured with a great birth to weaning spread.

88% PUREBRED HOMOZYGOUS BLACK DOUBLE POLLED BULL

**Lot 10** **TAU MR DARK HORSE 120B**

★ Calved: February 13, 2014 ★ Tattoo: TAU 120B ★ Reg. #: AMGV1288155

**Birth Weight: 90 Adj. 205-day Wt: 743**

JKGF Kobalt 82U ET  
**TNTF DARKHORSE 061W**  
 HYEK Alyiah 3161N

GMCC Ruppel Gunnison N31  
**TAU MS GUNNISON 729T**  
 TAU Krugerrand 5148R

| CED | BW  | WW | YW | MK | TM | CEM | ST | YG   | CW | REA | MB   | FT   | FPI   |
|-----|-----|----|----|----|----|-----|----|------|----|-----|------|------|-------|
| 9   | 1.5 | 66 | 92 | 31 | 65 | 5   | 7  | -.22 | 26 | .52 | -.15 | -.05 | 62.57 |

120B- A stout son of Darkhorse and out of a great Gunnison female. This is a very well rounded calf that is high performing and very maternal in his pedigree.

75% PUREBRED HOMOZYGOUS BLACK DOUBLE POLLED BULL

**Lot 12** **TAU MR GUNNISON 134B**

★ Calved: February 16, 2014 ★ Tattoo: TAU 134B ★ Reg. #: AMGV1287344

**Birth Weight: 78 Adj. 205-day Wt: 712**

VRT RUP Lazy TV Hotfudge J357  
**GMCC RUPPLE GUNNISON N31**  
 RUP Ruppel 919L

Sitz Upward 307R  
**TAU TAU MS UPWARD 2031Z**  
 TAU Ms Gunnison 573R

| CED | BW  | WW | YW  | MK | TM | CEM | ST | YG   | CW | REA | MB  | FT   | FPI  |
|-----|-----|----|-----|----|----|-----|----|------|----|-----|-----|------|------|
| 15  | 1.2 | 71 | 100 | 34 | 69 | 7   | 6  | -.39 | 30 | .82 | 0.1 | -.02 | 75.3 |

134B- Another of Gunnison out of a first calf heifer by Sitz Upward. Here is a calving ease specialist that will add to your bottom line whether you are keeping replacements or selling feeders.

75% PUREBRED BLACK DOUBLE POLLED BULL

**Lot 13** | **TAU MR GUNNISON 106 230U 59B**

★ Calved: February 5, 2014 ★ Tattoo: TAU 59B ★ Reg. #: AMGV1287221

**Birth Weight: 85**      **Adj. 205-day Wt: 741**

TAU Gunnison 106R  
**TAU MR GUNNISON 106R 230U**  
 TAU Miss Power Pac 13F 333N

CFCC Red Crowfoot Ole's Oscar  
**TAU MS OLE'S OSCAR 0129X**  
 TAU Miss Freedom 226M

| CED | BW   | WW | YW | MK | TM | CEM | ST | YG  | CW | REA | MB  | FT   | FPI   |
|-----|------|----|----|----|----|-----|----|-----|----|-----|-----|------|-------|
| 12  | -0.3 | 64 | 81 | 26 | 55 | 6   | 3  | -19 | 16 | .37 | .08 | -0.4 | 68.94 |

59B- Here is a truly intriguing son of Gunnison 230U. 59B is great balanced and sound structured. He is also stout and capacious. This great calf is going to be out in Denver with our pen of 3 bulls.



Lot 13

94% PUREBRED HOMOZYGOUS BLACK DOUBLE POLLED BULL

**Lot 14** | **TAU MR REVOLUTION 142B ET**

★ Calved: February 17, 2014 ★ Tattoo: TAU 142B ★ Reg. #: AMGV1290276

**Birth Weight: 85**      **Adj. 205-day Wt: 777**

KCF Bennett Kingpin K403  
**WOAK REVOLUTION 08T**  
 RLBG Tamara N006

TLR Cocoa 35C  
**TAU MS COCO 052KA 437D**  
 TAU 437D

| CED | BW  | WW | YW  | MK | TM | CEM | ST | YG  | CW | REA | MB   | FT   | FPI   |
|-----|-----|----|-----|----|----|-----|----|-----|----|-----|------|------|-------|
| 8   | 1.8 | 77 | 107 | 35 | 73 | 8   | 5  | -39 | 33 | .42 | -.18 | -.08 | 68.94 |

142B- A true purebred here that is very high performing and growthy. 142B is a larger framed bull that is long bodied and bold ribbed. Did I mention that he is a maternal brother to the popular A.I. sire Kruggerrand 130P.

75% PUREBRED DOUBLE BLACK DOUBLE POLLED BULL

**Lot 15** | **TAU MR BIG DOG 161B**

★ Calved: February 19, 2014 ★ Tattoo: TAU 161B ★ Reg. #: AMGV1287383

**Birth Weight: 80**      **Adj. 205-day Wt: 761**

HYEK Black Impact 3960N  
**PLA BIG DOG 101Y**  
 EGL P190

TC Freedom 104  
**TAU MS TC FREEDOM 812U**  
 TAU Miss Big Sky 3107N

| CED | BW  | WW | YW  | MK | TM | CEM | ST | YG  | CW | REA | MB  | FT   | FPI  |
|-----|-----|----|-----|----|----|-----|----|-----|----|-----|-----|------|------|
| 8   | 1.3 | 72 | 109 | 22 | 61 | 5   | 4  | -29 | 36 | .35 | -.1 | -.05 | 67.5 |

161B- Another Big Dog son that is very powerfully made. 161B has a lot of muscle shape and thickness, and is backed by a stout made TC Freedom daughter.

75% PUREBRED DOUBLE BLACK DOUBLE POLLED BULL

**Lot 16** | **TAU MR BIG DOG 163B**

★ Calved: February 20, 2014 ★ Tattoo: TAU 163B ★ Reg. #: AMGV1287392

**Birth Weight: 93**      **Adj. 205-day Wt: 774**

HYEK Black Impact 3960N  
**PLA BIG DOG 101Y**  
 EGL P190

TC Freedom 104  
**TAU MS TC FREEDOM 6174S**  
 TAU Miss XXB Drew 276M

| CED | BW  | WW | YW  | MK | TM | CEM | ST | YG  | CW | REA | MB   | FT   | FPI   |
|-----|-----|----|-----|----|----|-----|----|-----|----|-----|------|------|-------|
| 8   | 1.1 | 71 | 108 | 25 | 64 | 4   | 6  | -.3 | 35 | .36 | -.07 | -.06 | 71.38 |

163B- A Big Dog son that is big footed and massive at the ground. He gets out and fills his track with a fault free stride, and is supported by a great set of EPD's

94% PUREBRED DOUBLE BLACK DOUBLE POLLED BULL

**Lot 17** | **TAU MR GUNNISON 230U 182B**

★ Calved: February 26, 2014 ★ Tattoo: TAU 182B ★ Reg. #: AMGV1287415

**Birth Weight: 87**      **Adj. 205-day Wt: 790**

TAU Gunnison 106R  
**TAU MR GUNNISON 106R 230U**  
 TAU Miss Power Pac 13F 333N

HYEK Black Impact 3960N  
**TAU MS IMPACT 0144X**  
 TAU Ms Freedom 607S

| CED | BW  | WW | YW | MK | TM | CEM | ST | YG   | CW | REA | MB   | FT   | FPI   |
|-----|-----|----|----|----|----|-----|----|------|----|-----|------|------|-------|
| 10  | 1.1 | 65 | 87 | 25 | 57 | 5   | 4  | -.22 | 23 | .47 | -.14 | -.05 | 62.13 |

182B- A 94% purebred out of our herdsire Gunnison 230U. 182B is out of a great Black Impact daughter. This guy should be able to make a great set of replacement females, and with a 790 lb weaning weight I would still expect him to add pounds to a set of feeders.

75% PUREBRED DOUBLE BLACK DOUBLE POLLED BULL

**Lot 18** | **TAU MR DARK HORSE 187B**

★ Calved: February 27, 2014 ★ Tattoo: TAU 187B ★ Reg. #: AMGV1288216

**Birth Weight: 98**      **Adj. 205-day Wt: 758**

JKGF Kobalt 82U ET  
**TNTF DARKHORSE 061W**  
 HYEK Alyiah 3161N

TAU Kruggerrand 70M  
**TAU MISS KRUGGERGRAND**  
 TAU Mr Big Sky 387N

| CED | BW  | WW | YW | MK | TM | CEM | ST | YG   | CW | REA | MB   | FT   | FPI   |
|-----|-----|----|----|----|----|-----|----|------|----|-----|------|------|-------|
| 7   | 1.4 | 64 | 87 | 24 | 56 | 4   | 5  | -.17 | 22 | .29 | -.14 | -.05 | 60.12 |

187B- This guy may be one of the stoutest purebreds on the sale. He carries a ton of muscle shape down his top and into his quarter. This meat wagon weaned off the cow at 758 pounds.



Lot 18

PUREBRED GELBVIH



75% PUREBRED RED DOUBLE POLLED BULL

**Lot 19** | **TAU MR GRID TOPPER 43T 61B**

★ Calved: February 6, 2014 ★ Tattoo: TAU 61B ★ Reg. #: AMGV1287225

**Birth Weight: 80**      **Adj. 205-day Wt: 728**

TC Grid Topper 355  
**TAU MR GRID TOPPER 43T**  
 TAU Miss Ty 3130N

TAU Mr Hy-Per Active 60W ET  
**TAU HY-PER ACTIVE 60W ET 1111Y**  
 TAU Ms Honor Roll 9109W

| CED | BW  | WW | YW | MK | TM | CEM | ST | YG   | CW | REA | MB | FT   | FPI   |
|-----|-----|----|----|----|----|-----|----|------|----|-----|----|------|-------|
| 14  | 1.3 | 71 | 94 | 18 | 52 | 9   | 5  | -.43 | 26 | .82 | .1 | -.03 | 70.83 |

61B- Here is a Red son of our great sire Mr. Grid Topper 43T. This guy possesses a great look and plenty of power. He hit the ground at 80 pounds and weaned off the cow at 728 pounds.



Lot 19

88% PUREBRED DOUBLE BLACK DOUBLE POLLED BULL

**Lot 20** | **TAU MR GUNNISON 230U 203B**

★ Calved: March 4, 2014 ★ Tattoo: TAU 203B ★ Reg. #: AMGV1287486

**Birth Weight: 88**      **Adj. 205-day Wt: 763**

TAU Gunnison 106R  
**TAU MR GUNNISON 106R 230U**  
 TAU Miss Power Pac 13F 333N

GMCC Ruppel Gunnison N31  
**TAU MS GUNNISON 0132X**  
 TAU Miss Vision 3210N

| CED | BW  | WW | YW | MK | TM | CEM | ST | YG   | CW | REA | MB   | FT   | FPI   |
|-----|-----|----|----|----|----|-----|----|------|----|-----|------|------|-------|
| 12  | 1.4 | 61 | 80 | 28 | 59 | 8   | 4  | -.28 | 19 | .55 | -.05 | -.06 | 62.64 |

203B- A son of Gunnison 230U, 203B is a younger calf that is very attractive and sound. He is level and square and covers his track with a great stride. This guy is very capacious and maternal in his pedigree.

94% PUREBRED DOUBLE BLACK DOUBLE POLLED BULL

**Lot 21** | **TAU MR GUNNISON 230U 211B**

★ Calved: March 7, 2014 ★ Tattoo: TAU 211B ★ Reg. #: AMGV1303800

**Birth Weight: 84**      **Adj. 205-day Wt: 760**

TAU Gunnison 106R  
**TAU MR GUNNISON 106R 230U**  
 TAU Miss Power Pac 13F 333N

BABR Tsunami 447P  
**TAU MS TSUNAMI 1104Y**  
 TAU Ms Gunnison Chelsey 692S

| CED | BW  | WW | YW | MK | TM | CEM | ST | YG   | CW | REA | MB   | FT   | FPI   |
|-----|-----|----|----|----|----|-----|----|------|----|-----|------|------|-------|
| 9   | 2.6 | 65 | 83 | 26 | 59 | 6   | 4  | -.38 | 21 | .58 | -.15 | -.07 | 60.39 |

211B- Another son of Gunnison 230U and out of a good Tsunami daughter. 211B is extremely stout and powerful. You will find a ton of top shape and thickness in this guy.





38% BALANCER HOMOZYGOUS BLACK DOUBLE POLLED BULL

**Lot 22** **TAU MR CONSENSUS 3B ET**

★ Calved: January 16, 2014 ★ Tattoo: TAU 3B ★ Reg. #: AMGV1290264

**Birth Weight: 75** **Adj. 205-day Wt: 713**

Connealy Consensus  
**CONNELY CONSENSUS 7229**  
Blue Lilly of Conanga 16

SEPT Rodeo Drive J14  
**TAU MISS RODEO DRIVE 321N**  
TAU Miss Kerrie 405D

| CED | BW  | WW | YW | MK | TM | CEM | ST | YG   | CW | REA | MB  | FT   | FPI   |
|-----|-----|----|----|----|----|-----|----|------|----|-----|-----|------|-------|
| 6   | 1.3 | 67 | 99 | 31 | 64 | 5   | 4  | -.39 | 30 | .67 | .47 | -.04 | 79.23 |

3B- A son of the widely used A.I. sire Connealy Consensus. 3B along with the next three calves are flushmates out of a great Rodeo Drive daughter. 3B is extremely stout and powerful. He exhibits a ton of top shape and width.



Lot 22

38% BALANCER DOUBLE BLACK HOMOZYGOUS POLLED BULL

**Lot 23** **TAU UNANIMOUS 11B ET**

★ Calved: January 20, 2014 ★ Tattoo: TAU 11B ★ Reg. #: AMGV1290261

**Birth Weight: 80** **Adj. 205-day Wt: 833**

Connealy Consensus  
**CONNELY CONSENSUS 7229**  
Blue Lilly of Conanga 16

SEPT Rodeo Drive J14  
**TAU MISS RODEO DRIVE 321N**  
TAU Miss Kerrie 405D

| CED | BW  | WW | YW  | MK | TM | CEM | ST | YG   | CW | REA | MB  | FT   | FPI   |
|-----|-----|----|-----|----|----|-----|----|------|----|-----|-----|------|-------|
| 7   | 0.8 | 67 | 103 | 27 | 60 | 6   | 4  | -.47 | 32 | .71 | .63 | -.01 | 84.54 |

11B- There is a lot to say about this young herdsire prospect as he is so stout, soggy and sound structured. 11B has been one of our favorites since the time he was born. A lot of style combined with carcass and maternal quality is what you will get out of this guy. He will be our Balancer futurity entry at the Denver stock show.



Lot 23

38% BALANCER HOMOZYGOUS BLACK DOUBLE POLLED BULL

**Lot 24** **TAU MR CONSENSUS 13B ET**

★ Calved: January 23, 2014 ★ Tattoo: TAU 13B ★ Reg. #: AMGV1290263

**Birth Weight: 84** **Adj. 205-day Wt: 711**

Connealy Consensus  
**CONNELY CONSENSUS 7229**  
Blue Lilly of Conanga 16

SEPT Rodeo Drive J14  
**TAU MISS RODEO DRIVE 321N**  
TAU Miss Kerrie 405D

| CED | BW  | WW | YW | MK | TM | CEM | ST | YG   | CW | REA | MB  | FT   | FPI   |
|-----|-----|----|----|----|----|-----|----|------|----|-----|-----|------|-------|
| 6   | 2.5 | 67 | 99 | 31 | 64 | 5   | 4  | -.39 | 30 | .67 | .47 | -.04 | 77.79 |

13B- Here is one of the stoutest Balancer bulls in our sale this year. This Consensus sons picture tells the whole story. Extremely thick and massive with a ton of foot and bone. 13B is certainly a calf that will add pounds and profit to your bottom line.



Lot 24

38% BALANCER HOMOZYGOUS BLACK DOUBLE POLLED BULL

**Lot 25** **TAU MR CONSENSUS 44B ET**

★ Calved: February 3, 2014 ★ Tattoo: TAU 44B ★ Reg. #: AMGV1290270

**Birth Weight: 86** **Adj. 205-day Wt: 777**

Connealy Consensus  
**CONNELY CONSENSUS 7229**  
Blue Lilly of Conanga 16

SEPT Rodeo Drive J14  
**TAU MISS RODEO DRIVE 321N**  
TAU Miss Kerrie 405D

| CED | BW  | WW | YW | MK | TM | CEM | ST | YG   | CW | REA | MB  | FT   | FPI   |
|-----|-----|----|----|----|----|-----|----|------|----|-----|-----|------|-------|
| 6   | 1.8 | 67 | 99 | 31 | 64 | 5   | 4  | -.39 | 30 | .67 | .47 | -.04 | 78.63 |

44B- Another Consensus son out of our great Rodeo Drive donor, 44B is a little different in terms of build. He is a more moderate framed calf that is really soggy and capacious. He also posted a 777 pound weaning weight.



Lot 25

38% BALANCER HOMOZYGOUS BLACK DOUBLE POLLED BULL

**Lot 26** **TAU MR FINAL ANSWER 1B ET**

★ Calved: January 11, 2014 ★ Tattoo: TAU 1B ★ Reg. #: AMGV1290256

**Birth Weight: 65** **Adj. 205-day Wt: 681**Sitz Traveler 8180  
**S A V FINAL ANSWER 0035**  
S A V Emulous 8145SEPT Rodeo Drive J14  
**TAU MISS RODEO DRIVE 321N**  
TAU Miss Kerrie 405D

| CED | BW   | WW | YW | MK | TM | CEM | ST | YG   | CW | REA | MB  | FT   | FPI   |
|-----|------|----|----|----|----|-----|----|------|----|-----|-----|------|-------|
| 7   | -0.4 | 55 | 81 | 24 | 51 | 7   | NA | -.24 | 19 | .23 | .12 | -.02 | 64.21 |

1B- Here is another calf out of the Rodeo Drive donor cow, 321N. She sure does stamp them all a lot alike, as this calf is really thick and powerful. He is a son of the all time great SAV Final Answer, with a great spread from birth to weaning. He will be featured in our pen of 5 in Denver.



Lot 26

38% BALANCER HOMOZYGOUS BLACK HOMOZYGOUS POLLED BULL

**Lot 27** **TAU MR FINAL ANSWER 6B ET**

★ Calved: January 18, 2014 ★ Tattoo: TAU 6B ★ Reg. #: AMGV1290259

**Birth Weight: 72** **Adj. 205-day Wt: 726**Sitz Traveler 8180  
**S A V FINAL ANSWER 0035**  
S A V Emulous 8145SEPT Rodeo Drive J14  
**TAU MISS RODEO DRIVE 321N**  
TAU Miss Kerrie 405D

| CED | BW  | WW | YW | MK | TM | CEM | ST | YG   | CW | REA | MB  | FT   | FPI   |
|-----|-----|----|----|----|----|-----|----|------|----|-----|-----|------|-------|
| 7   | 0.6 | 55 | 81 | 24 | 51 | 7   | NA | -.24 | 19 | .23 | .12 | -.02 | 63.01 |

6B- A true powerhouse son of SAV Final Answer and 321N, 6B is massive and wide at the ground and he doesn't disappoint up top either. He is bold in his rib shape and powerful out of his hip. This guy is a profit maker and potential A.I. sire, don't miss him on sale day. He will be in the yards in Denver as well.



Lot 27

38% BALANCER HOMOZYGOUS BLACK DOUBLE POLLED BULL

**Lot 28** **TAU MR CONSENSUS 15B ET**

★ Calved: January 24, 2014 ★ Tattoo: TAU 15B ★ Reg. #: AMGV1290265

**Birth Weight: 84** **Adj. 205-day Wt: 739**Connealy Consensus  
**CONNELY CONSENSUS 7229**  
Blue Lilly of Conanga 16SEPT Rodeo Drive J14  
**TAU MISS RODEO DRIVE 321N**  
TAU Miss Kerrie 405D

| CED | BW  | WW | YW | MK | TM | CEM | ST | YG   | CW | REA | MB  | FT   | FPI   |
|-----|-----|----|----|----|----|-----|----|------|----|-----|-----|------|-------|
| 6   | 2.4 | 67 | 99 | 31 | 64 | 5   | 4  | -.39 | 30 | .67 | .47 | -.04 | 77.91 |

15B- Another moderate framed soggy middled son of Connealy Consensus. A ton of rib shape and body in this guy leads me to believe he will make easy keeping calves.

38% BALANCER HOMOZYGOUS BLACK DOUBLE POLLED BULL

**Lot 29** **TAU MR FINAL ANSWER 418B ET**

★ Calved: January 23, 2014 ★ Tattoo: TAU 418B ★ Reg. #: AMGV1290262

**Birth Weight: 78** **Adj. 205-day Wt: 651**Sitz Traveler 8180  
**S A V FINAL ANSWER 0035**  
S A V Emulous 8145SEPT Rodeo Drive J14  
**TAU MISS RODEO DRIVE 321N**  
TAU Miss Kerrie 405D

| CED | BW  | WW | YW | MK | TM | CEM | ST | YG   | CW | REA | MB  | FT   | FPI   |
|-----|-----|----|----|----|----|-----|----|------|----|-----|-----|------|-------|
| 7   | 1.3 | 55 | 81 | 24 | 51 | 7   | NA | -.24 | 19 | .23 | .12 | -.02 | 62.17 |

418B- Here is a good Final Answer son that is stamped with the quality of his sire. Really stout and wide made while being sound and long striding.

38% BALANCER HOMOZYGOUS BLACK DOUBLE POLLED BULL

**Lot 30** **TAU MR FINAL ANSWER 30B**

★ Calved: January 30, 2014 ★ Tattoo: TAU 30B ★ Reg. #: AMGV1302298

**Birth Weight: 72** **Adj. 205-day Wt: 700**Sitz Traveler 8180  
**S A V FINAL ANSWER 0035**  
S A V Emulous 8145GMCC Ruple Gunnison N31  
**TAU TAU MS GUNNISON 2075Z**  
TAU Ms 43T 037X

| CED | BW   | WW | YW  | MK | TM | CEM | ST | YG   | CW | REA | MB  | FT | FPI   |
|-----|------|----|-----|----|----|-----|----|------|----|-----|-----|----|-------|
| 18  | -1.2 | 73 | 110 | 24 | 61 | 11  | 4  | -.06 | 33 | .61 | .42 |    | 86.43 |

30B- A known son of Final Answer out of a great Gunnison first calf heifer. This guy hit the ground at 72 pounds making him a sure shot calving ease option.

50% BALANCER HOMOZYGOUS BLACK DOUBLE POLLED BULL

**Lot 31** **TAU MR DERRINGER 34B**

★ Calved: February 1, 2014 ★ Tattoo: TAU 34B ★ Reg. #: AMGV1302299

**Birth Weight: 65** **Adj. 205-day Wt: 754**TAU Gunslinger 19U  
**DJS DERRINGER 96X**  
Miss 004-76TTAU Tuned In 55T  
**TAU TAU MS TUNED IN 2055Z**  
TAU Miss Gunnison 835U

| CED | BW | WW | YW | MK | TM | CEM | ST | YG  | CW | REA | MB  | FT   | FPI   |
|-----|----|----|----|----|----|-----|----|-----|----|-----|-----|------|-------|
| 15  | -2 | 57 | 74 | 26 | 51 | 11  | 6  | -.4 | 12 | .69 | .13 | -.01 | 70.32 |

34B- Another sure shot calving ease sire here. 34B is out of Derringer, a calving ease sire raised by Jeff Swanson, and a Tuned In first calf heifer. This guy is powerful and had a great spread from birth to weaning.



63% BALANCER DOUBLE BLACK DOUBLE POLLED BULL

**Lot 32** | **TAU MR GRID TOPPER 43T 7B ET**

★ Calved: January 18, 2014 ★ Tattoo: TAU 7B ★ Reg. #: AMGV1288095

**Birth Weight: 77**      **Adj. 205-day Wt: 706**

TC Grid Topper 355

**TAU MR GRID TOPPER 43T**

TAU Miss Ty 3130N

TAU Gunnison 106R

**TAU MISS GUNNISON 106R 8101U**

TAU Ms Freedom 425P

| CED | BW  | WW | YW  | MK | TM | CEM | ST | YG   | CW | REA | MB  | FT   | FPI   |
|-----|-----|----|-----|----|----|-----|----|------|----|-----|-----|------|-------|
| 12  | 1.8 | 70 | 102 | 8  | 42 | 6   | 2  | -.47 | 32 | .64 | .14 | -.02 | 72.05 |

7B- 7B is a 43T son out of our great donor 8101U that exhibits a look that is second to none. He is very long and extended, bold ribbed and heavy muscled. We took him to the American Royal in Kansas City and he will be in our pen of 3 in the yards at Denver.



Lot 32

63% BALANCER HOMOZYGOUS BLACK DOUBLE POLLED BULL

**Lot 33** | **TAU MR GRID TOPPER 43T 9B ET**

★ Calved: January 20, 2014 ★ Tattoo: TAU 9B ★ Reg. #: AMGV1288097

**Birth Weight: 80**      **Adj. 205-day Wt: 671**

TC Grid Topper 355

**TAU MR GRID TOPPER 43T**

TAU Miss Ty 3130N

TAU Gunnison 106R

**TAU MISS GUNNISON 106R 8101U**

TAU Ms Freedom 425P

| CED | BW  | WW | YW  | MK | TM | CEM | ST | YG   | CW | REA | MB  | FT   | FPI   |
|-----|-----|----|-----|----|----|-----|----|------|----|-----|-----|------|-------|
| 12  | 1.9 | 70 | 102 | 8  | 42 | 6   | 2  | -.47 | 32 | .64 | .14 | -.02 | 71.93 |

9B- Here is a flushmate to the bull shown above, and he is built a lot like him. 9B is level made, square hiped, and sound structured. He carries the maternal ability of his mother, and I would expect his calves to make good replacements.



Lot 33

63% BALANCER DOUBLE BLACK DOUBLE POLLED BULL

**Lot 34** | **TAU MR GRID TOPPER 43T 20B ET**

★ Calved: January 26, 2014 ★ Tattoo: TAU 20B ★ Reg. #: AMGV1288125

**Birth Weight: 84**      **Adj. 205-day Wt: 677**

TC Grid Topper 355

**TAU MR GRID TOPPER 43T**

TAU Miss Ty 3130N

TAU Gunnison 106R

**TAU MISS GUNNISON 106R 8101U**

TAU Ms Freedom 425P

| CED | BW  | WW | YW  | MK | TM | CEM | ST | YG   | CW | REA | MB  | FT   | FPI   |
|-----|-----|----|-----|----|----|-----|----|------|----|-----|-----|------|-------|
| 12  | 1.6 | 70 | 102 | 8  | 42 | 6   | 2  | -.47 | 32 | .64 | .14 | -.02 | 72.29 |

20B- Another flushmate here out of 43T, this calf is high performing and growthy. 20B is long made and deep bodied with a lot of mass. I expect him to be as good as both of his parents some day.



Lot 34

38% BALANCER HOMOZYGOUS BLACK DOUBLE POLLED BULL

**Lot 35** | **TAU MR CONSENSUS 16B ET**

★ Calved: January 20, 2014 ★ Tattoo: TAU 9B ★ Reg. #: AMGV1288097

**Birth Weight: 80**      **Adj. 205-day Wt: 671**

Connealy Consensus

**CONNELLY CONSENSUS 7229**

Blue Lilly of Conanga 16

TAU Gunnison 106R

**TAU MISS GUNNISON 106R 8101U**

TAU Ms Freedom 425P

| CED | BW  | WW | YW  | MK | TM | CEM | ST | YG   | CW | REA | MB | FT   | FPI   |
|-----|-----|----|-----|----|----|-----|----|------|----|-----|----|------|-------|
| 12  | 0.7 | 73 | 113 | 25 | 61 | 5   | 1  | -.35 | 37 | .72 | .6 | -.03 | 88.09 |

16B- Another bull out of the 8101U female, except this calf is sired by the great Connealy Consensus. 16B is extremely stout made and powerful. He carries a ton of muscle shape throughout and is very wide made. This calf is a very intriguing herdsire prospect, and he will be going to the Denver Stock Show with us in our pen of 5.



Lot 35

BALANCERS

38% BALANCER HOMOZYGOUS BLACK DOUBLE POLLED BULL

**Lot 36** **TAU MR CONSENSUS 4B ET**

★ Calved: January 17, 2014 ★ Tattoo: TAU 4B ★ Reg. #: AMGV1288090

**Birth Weight: 70** **Adj. 205-day Wt: 732**Connealy Consensus  
**CONNALLY CONSENSUS 7229**  
Blue Lilly of Conanga 16TAU Gunnison 106R  
**TAU MISS GUNNISON 106R 8101U**  
TAU Ms Freedom 425P

| CED | BW  | WW | YW  | MK | TM | CEM | ST | YG    | CW | REA | MB | FT    | FPI   |
|-----|-----|----|-----|----|----|-----|----|-------|----|-----|----|-------|-------|
| 12  | 0.7 | 73 | 113 | 25 | 61 | 5   | 1  | -0.35 | 37 | .72 | .6 | -0.03 | 88.09 |

4B- A flushmate to 16B, this calf is a little different in his build. He is a long bodied and high performing son of Connealy Consensus. He was born weighing 70 pounds and weaned off recip at 732 pounds, that's a great spread.

38% BALANCER DOUBLE BLACK DOUBLE POLLED BULL

**Lot 37** **TAU MR DERRINGER 19B**

★ Calved: January 26, 2014 ★ Tattoo: TAU 19B ★ Reg. #: AMGV1303268

**Birth Weight: 62** **Adj. 205-day Wt: 748**TAU Gunslinger 19U  
**DJS DERRINGER 96X**  
Miss 004-76TTC Aberdeen 759  
**TAU MS ABERDEEN 2009Z**  
TAU Ms Freedom 635S

| CED | BW   | WW | YW | MK | TM | CEM | ST | YG    | CW | REA | MB  | FT    | FPI   |
|-----|------|----|----|----|----|-----|----|-------|----|-----|-----|-------|-------|
| 17  | -3.2 | 57 | 80 | 29 | 56 | 10  | 4  | -0.46 | 14 | .88 | .17 | -0.02 | 74.12 |

19B- Here is a unique heifer bull opportunity, as 19B has been one of our favorites for a long time. This son of Derringer has a great look and is extremely deep bodied, don't forget to notice that he hit the ground at 62 pounds and weaned off at 748 pounds.

38% BALANCER HOMOZYGOUS BLACK DOUBLE POLLED BULL

**Lot 38** **TAU MR IN FOCUS 22Z 36B**

★ Calved: February 1, 2014 ★ Tattoo: TAU 36B ★ Reg. #: AMGV1293120

**Birth Weight: 75** **Adj. 205-day Wt: 835**Mytty In Focus  
**TAU TAU MR IN FOCUS 22Z**  
TAU Ms Gunnison 028XEBY Western Hauler 028S  
**TAU TAU MS WESTERN HAULER 240**  
TAU Miss Hot Fudge 761T

| CED | BW   | WW | YW  | MK | TM | CEM | ST | YG    | CW | REA | MB  | FT    | FPI   |
|-----|------|----|-----|----|----|-----|----|-------|----|-----|-----|-------|-------|
| 14  | -0.5 | 78 | 110 | 28 | 62 | 9   | 3  | -0.28 | 34 | .6  | .62 | -0.01 | 93.10 |

36B- Here is a scale busting son of a heifer bull we sold a couple of years ago In Focus 22Z. 36B is right in so many ways, he has a great set of numbers, is good in his skeletal build, and he outdid a lot of his contemporaries going from 75 pounds at birth to 837 pounds at weaning.

38% BALANCER HOMOZYGOUS BLACK DOUBLE POLLED BULL

**Lot 40** **TAU MR FINAL ANSWER 45B**

★ Calved: February 4, 2014 ★ Tattoo: TAU 45B ★ Reg. #: AMGV1303702

**Birth Weight: 74** **Adj. 205-day Wt: 667**Sitz Traveler 8180  
**S A V FINAL ANSWER 0035**  
S A V Emulous 8145TAU Mr Gunnison 106R 230U  
**TAU MS GUNNISON 230U 2084Z**  
TAU Ms Onix 6161S

| CED | BW   | WW | YW  | MK | TM | CEM | ST | YG    | CW | REA | MB  | FT | FPI   |
|-----|------|----|-----|----|----|-----|----|-------|----|-----|-----|----|-------|
| 15  | -1.1 | 67 | 104 | 24 | 58 | 11  | 2  | -0.06 | 29 | .45 | .35 |    | 81.39 |

45B- Calving Ease Final Answer son that goes back to Gunnison on the dam's side. Plenty of growth potential and maternal ability in this young herdsires pedigree.



Lot 36



Lot 37

50% BALANCER HOMOZYGOUS BLACK DOUBLE POLLED BULL

**Lot 39** **TAU MR FINAL ANSWER 37B**

★ Calved: February 2, 2014 ★ Tattoo: TAU 37B ★ Reg. #: AMGV1287207

**Birth Weight: 75** **Adj. 205-day Wt: 685**Sitz Traveler 8180  
**S A V FINAL ANSWER 0035**  
S A V Emulous 8145ELK CK Wild Bill 42U  
**TAU TAU MS WILD BILL 2145Z**  
TAU Miss Gunnison 106R 7109T

| CED | BW   | WW | YW  | MK | TM | CEM | ST | YG    | CW | REA | MB  | FT    | FPI   |
|-----|------|----|-----|----|----|-----|----|-------|----|-----|-----|-------|-------|
| 17  | -0.3 | 66 | 102 | 24 | 58 | 10  | 4  | -0.07 | 28 | .42 | .28 | -0.01 | 77.01 |

37B- Another calving ease sire here. 37B is backed by Final Answer, one of the all time greats in the Angus breed, and a good first calf daughter of Wild Bill. He is powerful and stout made.

38% BALANCER HOMOZYGOUS BLACK DOUBLE POLLED BULL

**Lot 41** **TAU MR FINAL ANSWER 53B**

★ Calved: February 5, 2014 ★ Tattoo: TAU 53B ★ Reg. #: AMGV1287852

**Birth Weight: 75** **Adj. 205-day Wt: 669**Sitz Traveler 8180  
**S A V FINAL ANSWER 0035**  
S A V Emulous 8145DJS 99X  
**TAU TAU MS GUN SLINGER 2184Z**  
TAU Ms Hot Fudge 6114S

| CED | BW  | WW | YW  | MK | TM | CEM | ST | YG    | CW | REA | MB  | FT    | FPI   |
|-----|-----|----|-----|----|----|-----|----|-------|----|-----|-----|-------|-------|
| 14  | 0.5 | 72 | 111 | 25 | 62 | 10  | 6  | -0.12 | 34 | .62 | .31 | -0.01 | 80.06 |

53B- Year in and year out the Final Answer sire group is always a highly sought after one, and this year should be the same. 53B is a sleep at night calving ease sire that is deep and attractive.



63% BALANCER HOMOZYGOUS BLACK HOMOZYGOUS POLLED BULL

**Lot 42** | **TAU MR GRID TOPPER 43T 21B**

★ Calved: January 26, 2014 ★ Tattoo: TAU 21B ★ Reg. #: AMGV1287163

**Birth Weight: 86**      **Adj. 205-day Wt: 755**

TC Grid Topper 355

**TAU MR GRID TOPPER 43T**

TAU Miss Ty 3130N

TAU Gunnison 106R

**TAU MISS GUNNISON 106R 1031Y**

TAU Miss Lutton 7106T

| CED | BW  | WW | YW  | MK | TM | CEM | ST | YG   | CW | REA | MB  | FT   | FPI   |
|-----|-----|----|-----|----|----|-----|----|------|----|-----|-----|------|-------|
| 11  | 1.5 | 69 | 100 | 13 | 47 | 8   | 3  | -.33 | 31 | .6  | .18 | -.03 | 72.20 |

21B- Pictured is a great son of our herdsire 43T. 21B is as stout and powerful as they come with plenty of look and eye appeal as well. This guy is definitely the front pasture kind and his calves will be the market topping kind. He is heading to Denver in our Pen of 5



Lot 42

25% BALANCER HOMOZYGOUS BLACK DOUBLE POLLED BULL

**Lot 43** | **TAU MR IN FOCUS 23B**

★ Calved: January 27, 2014 ★ Tattoo: TAU 23B ★ Reg. #: AMGV1287193

**Birth Weight: 62**      **Adj. 205-day Wt: 685**

S A F Focus of E R

**MYTTY IN FOCUS**

Mytty Countess 906

TAU Gunnison 106R

**TAU TAU MS 106 286Z**

TAU Ms Buster 902W

| CED | BW   | WW | YW  | MK | TM | CEM | ST | YG   | CW | REA | MB  | FT   | FPI   |
|-----|------|----|-----|----|----|-----|----|------|----|-----|-----|------|-------|
| 16  | -3.1 | 68 | 102 | 21 | 55 | 8   | 3  | -.06 | 27 | .25 | .45 | -.02 | 85.10 |

23B- A true calving ease son of an Angus great Mytty In Focus. 23B hit the ground at 62 pounds and his genetic makeup tells me he will be a sure shot calving ease sire with plenty of growth.



Lot 43

38% BALANCER HOMOZYGOUS BLACK DOUBLE POLLED BULL

**Lot 44** | **TAU MR IN FOCUS 55B**

★ Calved: February 5, 2014 ★ Tattoo: TAU 55B ★ Reg. #: AMGV1287220

**Birth Weight: 70**      **Adj. 205-day Wt: 770**

S A F Focus of E R

**MYTTY IN FOCUS**

Mytty Countess 906

HYEK Black Impact 3960N

**TAU TAU MS IMPACT 292Z**

TAU Ms Traveler 6807 4103P

| CED | BW   | WW | YW  | MK | TM | CEM | ST | YG   | CW | REA | MB  | FT   | FPI   |
|-----|------|----|-----|----|----|-----|----|------|----|-----|-----|------|-------|
| 16  | -1.9 | 74 | 106 | 27 | 61 | 7   | 3  | -.04 | 30 | .3  | .55 | -.01 | 89.88 |

55B- Another In Focus son held in high regard for calving ease. 55B is a sleep at night heifer bull that also weaned off at 770 pounds.

38% BALANCER HOMOZYGOUS BLACK DOUBLE POLLED BULL

**Lot 45** | **TAU MR IN FOCUS 64B**

★ Calved: February 7, 2014 ★ Tattoo: TAU 64B ★ Reg. #: AMGV1287231

**Birth Weight: 76**      **Adj. 205-day Wt: 671**

S A F Focus of E R

**MYTTY IN FOCUS**

Mytty Countess 906

DJS 99X

**TAU TAU MS GUN SLINGER 2171Z**

TAU Ms Rodeo Drive 211 6138S

| CED | BW   | WW | YW | MK | TM | CEM | ST | YG   | CW | REA | MB  | FT   | FPI   |
|-----|------|----|----|----|----|-----|----|------|----|-----|-----|------|-------|
| 15  | -0.8 | 60 | 90 | 27 | 57 | 10  | 5  | -.12 | 21 | .3  | .42 | -.03 | 77.25 |

64B- Calving ease son of In Focus. 64B has a great look and plenty of eye appeal. He is the easy keeping calves and he should pass this fleshing ability on to his calves.

50% BALANCER DOUBLE BLACK DOUBLE POLLED BULL

**Lot 46** | **TAU MR GOODNIGHT 68B**

★ Calved: February 7, 2014 ★ Tattoo: TAU 68B ★ Reg. #: AMGV1287234

**Birth Weight: 83**      **Adj. 205-day Wt: 701**

CTR Good Night 4743P

**CTR GOOD NIGHT 715T**

CTR Poll Star 5160E

TC Freedom 104

**TAU MISS TC FREEDOM 899U**

TAU Miss Big Sky 329N

| CED | BW   | WW | YW | MK | TM | CEM | ST | YG   | CW | REA | MB  | FT   | FPI   |
|-----|------|----|----|----|----|-----|----|------|----|-----|-----|------|-------|
| 13  | -0.6 | 63 | 91 | 22 | 53 | 9   | 4  | -.27 | 23 | .2  | .03 | -.04 | 68.62 |

68B- A Good Night son backed by a great TC Freedom cow. 68B is growthy and powerful, as he is deep, long and soggy.

50% BALANCER HOMOZYGOUS BLACK DOUBLE POLLED BULL

**Lot 47** | **TAU MR TOP GUN 292Y 69B**

★ Calved: February 7, 2014 ★ Tattoo: TAU 69B ★ Reg. #: AMGV1287781

**Birth Weight: 84**      **Adj. 205-day Wt: 850**

TAU Mr Grid Topper 43T

**TAU TOP GUN 292Y**

TAU Ms 4153P

JBOB 3303K ET

**TAU MS JUNIOR 3303K 7149T**

TAU Ms New Design 878 308

| CED | BW  | WW | YW  | MK | TM | CEM | ST | YG   | CW | REA | MB  | FT   | FPI   |
|-----|-----|----|-----|----|----|-----|----|------|----|-----|-----|------|-------|
| 9   | 0.9 | 88 | 112 | 22 | 60 | 10  | 7  | -.04 | 38 | .33 | .12 | -.03 | 74.87 |

69B- A very stout and powerful son of Top Gun 292Y, a bull we sold into South Dakota a couple of years back. 69B is a high performing calf that is at the top of our herd in regards to weaning weight as he hit the scales at 850 pounds.

50% BALANCER HOMOZYGOUS BLACK DOUBLE POLLED BULL

**Lot 48** **TAU MR IN FOCUS 22Z 40B**

★ Calved: February 2, 2014 ★ Tattoo: TAU 40B ★ Reg. #: AMGV1293122

**Birth Weight: 80** **Adj. 205-day Wt: 771**

Mytty In Focus

**TAU TAU MR IN FOCUS 22Z**

TAU Ms Gunnison 028X

GMCC Ruppel Gunnison N31

**TAU TAU MS GUNNISON 211Z**

TAU Ms Ole's Oscar 0129X

| CED | BW   | WW | YW | MK | TM | CEM | ST | YG   | CW | REA | MB  | FT | FPI   |
|-----|------|----|----|----|----|-----|----|------|----|-----|-----|----|-------|
| 19  | -1.2 | 71 | 95 | 25 | 57 | 9   | 5  | -.32 | 22 | .64 | .64 | 0  | 91.02 |

40B- Here is a very good son of In Focus 22Z. This calf is built right in every way. He is sound structured, bold ribbed, massive, and powerful. Did I mention that he is a calving ease sire? He was born at 80 pounds and weaned off the cow at 771 pounds. He will be making the trip to Denver with our pen of 3.

38% BALANCER HOMOZYGOUS BLACK DOUBLE POLLED BULL

**Lot 49** **TAU MR IN FOCUS 51B**

★ Calved: February 4, 2014 ★ Tattoo: TAU 51B ★ Reg. #: AMGV1303712

**Birth Weight: 78** **Adj. 205-day Wt: 771**

S A F Focus of E R

**MYTTY IN FOCUS**

Mytty Countess 906

TAU Mr Gunnison 106R 230U

**TAU MS GUNNISON 230U 2170Z**

TAU Ms Sleepy 204P 7150T

| CED | BW   | WW | YW | MK | TM | CEM | ST | YG   | CW | REA | MB  | FT   | FPI   |
|-----|------|----|----|----|----|-----|----|------|----|-----|-----|------|-------|
| 14  | -0.4 | 70 | 96 | 26 | 59 | 9   | 2  | -.08 | 25 | .27 | .39 | -.03 | 80.97 |

51B- Another great son of In Focus here. 51B is the easy keeping kind, he is very soggy middled and powerfully constructed. A 78 pounds birth weight makes him a calving ease candidate as well. He will go to the stock show in Denver with our pen of 5.

50% BALANCER DOUBLE BLACK DOUBLE POLLED BULL

**Lot 50** **TAU MR DERRINGER 70B**

★ Calved: February 8, 2014 ★ Tattoo: TAU 70B ★ Reg. #: AMGV1287235

**Birth Weight: 75** **Adj. 205-day Wt: 707**

TAU Gunslinger 19U

**DJS DERRINGER 96X**

Miss 004-76T

TAU Mr Grid Topper 43T

**TAU TAU MS 43T 2100Z**

TAU Miss Blackjack 78K 4167P

| CED | BW   | WW | YW | MK | TM | CEM | ST | YG   | CW | REA | MB | FT   | FPI   |
|-----|------|----|----|----|----|-----|----|------|----|-----|----|------|-------|
| 15  | -0.7 | 50 | 70 | 27 | 52 | 12  | 4  | -.49 | 10 | .69 | .1 | -.04 | 64.55 |

70B- A calving ease son of the Derringer bull that did a lot of good for us on heifers this last year. 70B is out of a good 43T daughter, and I would expect his calves to be deep and powerful.

38% BALANCER HOMOZYGOUS BLACK DOUBLE POLLED BULL

**Lot 52** **TAU MR IN FOCUS 22Z 73B**

★ Calved: February 8, 2014 ★ Tattoo: TAU 73B ★ Reg. #: AMGV1293124

**Birth Weight: 80** **Adj. 205-day Wt: 744**

Mytty In Focus

**TAU TAU MR IN FOCUS 22Z**

TAU Ms Gunnison 028X

EBY Western Hauler 028S

**TAU TAU MS WESTERNAULER 245Z**

TAU Ms Junior 3303K 7149T

| CED | BW   | WW | YW  | MK | TM | CEM | ST | YG   | CW | REA | MB  | FT   | FPI   |
|-----|------|----|-----|----|----|-----|----|------|----|-----|-----|------|-------|
| 14  | -0.3 | 72 | 106 | 28 | 61 | 9   | 4  | -.28 | 30 | .56 | .61 | -.01 | 89.36 |

73B- Yet another son of the A.I. sire we raised, In Focus 22Z, that is a calving ease specialist. 73B is backed by a great first calf heifer with plenty of natural thickness and muscle shape.



Lot 48



Lot 49

38% BALANCER HOMOZYGOUS BLACK DOUBLE POLLED BULL

**Lot 51** **TAU MR IN FOCUS 72B**

★ Calved: February 8, 2014 ★ Tattoo: TAU 72B ★ Reg. #: AMGV1287241

**Birth Weight: 80** **Adj. 205-day Wt: 773**

S A F Focus of E R

**MYTTY IN FOCUS**

Mytty Countess 906

GMCC Ruppel Gunnison N31

**TAU TAU MS GUNNISON 247Z**

TAU Ms Advance 0154X

| CED | BW   | WW | YW | MK | TM | CEM | ST | YG  | CW | REA | MB  | FT   | FPI   |
|-----|------|----|----|----|----|-----|----|-----|----|-----|-----|------|-------|
| 19  | -1.3 | 69 | 91 | 25 | 56 | 10  | 5  | -.1 | 21 | .37 | .48 | -.01 | 84.73 |

72B- Here is a calving ease In Focus son that is stamped with the look of his sire. Extremely deep and bold ribbed with plenty of mass and power. Also check out the calving ease, birth weight, and growth figures on this calf. You should be impressed.

50% BALANCER BLACK DOUBLE POLLED BULL

**Lot 53** **TAU MR 782 77B**

★ Calved: February 9, 2014 ★ Tattoo: TAU 77B ★ Reg. #: AMGV1287245

**Birth Weight: 80** **Adj. 205-day Wt: 793**

TC Gridiron 258

**TC GRIDIRON 782**

TC Quality 3161

TAU T G Ty 313L

**TAU MISS TY 489P**

TAU Ms Ike 9163J

| CED | BW  | WW | YW | MK | TM | CEM | ST | YG   | CW | REA | MB  | FT   | FPI   |
|-----|-----|----|----|----|----|-----|----|------|----|-----|-----|------|-------|
| 10  | 0.2 | 68 | 82 | 21 | 50 | 8   | 4  | -.25 | 19 | .56 | .04 | -.04 | 68.64 |

77B- Here is a son of our now deceased herdsire TC Gridiron 782. 77B's dam is an impressive Ty daughter that is 10 years old. This guy has an impressive pedigree with longevity and fertility through and through. He also performed by weaning off the cow at 793 pounds.



50% BALANCER DOUBLE BLACK DOUBLE POLLED BULL

**Lot 54** **TAU MR GRID TOPPER 43T 56B ET**

★ Calved: February 5, 2014 ★ Tattoo: TAU 56B ★ Reg. #: AMGV1290407

**Birth Weight: 88 Adj. 205-day Wt: 734**

TC Grid Topper 355  
**TAU MR GRID TOPPER 43T**  
 TAU Miss Ty 3130N

Boyd On Target 1083  
**TAU MISS ON TARGET 740T**  
 TAU Miss Nite Hawk 3181N

| CED | BW | WW | YW | MK | TM | CEM | ST | YG  | CW | REA | MB  | FT  | FPI   |
|-----|----|----|----|----|----|-----|----|-----|----|-----|-----|-----|-------|
| 12  | 1  | 60 | 96 | 12 | 42 | 8   | 2  | -.4 | 28 | .54 | .48 | .01 | 75.99 |

56B- A son of Grid Topper 43T out of a great Balancer donor cow. 56B is very attractive, sound structured and correctly built. He is level made and deep bodied. He should be a very maternal female maker.



Lot 54

38% BALANCER HOMOZYGOUS BLACK DOUBLE POLLED BULL

**Lot 55** **TAU MR IN FOCUS 62B**

★ Calved: February 6, 2014 ★ Tattoo: TAU 62B ★ Reg. #: AMGV1287230

**Birth Weight: 75 Adj. 205-day Wt: 767**

S A F Focus of E R  
**MYTTY IN FOCUS**  
 Mytty Countess 906

TAU Gunnison 106R  
**TAU TAU MS GUNNISON 106R 267Z**  
 TAU Ms Grid Topper 43T 9168W

| CED | BW | WW | YW | MK | TM | CEM | ST | YG   | CW | REA | MB  | FT   | FPI   |
|-----|----|----|----|----|----|-----|----|------|----|-----|-----|------|-------|
| 16  | -1 | 72 | 93 | 21 | 52 | 8   | 4  | -.09 | 23 | .34 | .49 | -.01 | 85.10 |

62B- Another great son of Mytty In Focus that goes back to Gunnison on the dam's side. 62B is a very stout featured calving ease sire backed by a great genetic profile.



Lot 55

38% BALANCER HOMOZYGOUS BLACK DOUBLE POLLED BULL

**Lot 56** **TAU MR IN FOCUS 79B**

★ Calved: February 9, 2014 ★ Tattoo: TAU 79B ★ Reg. #: AMGV1287246

**Birth Weight: 76 Adj. 205-day Wt: 725**

S A F Focus of E R  
**MYTTY IN FOCUS**  
 Mytty Countess 906

GMCC Ruppel Gunnison N31  
**TAU TAU MS GUNNISON 218Z**  
 TAU Ms Tuned In 0187X

| CED | BW   | WW | YW  | MK | TM | CEM | ST | YG   | CW | REA | MB  | FT | FPI   |
|-----|------|----|-----|----|----|-----|----|------|----|-----|-----|----|-------|
| 18  | -0.5 | 68 | 101 | 24 | 56 | 9   | 3  | -.05 | 28 | .41 | .59 | 0  | 84.14 |

79B- Here is a double bred calving ease herdsire prospect out of In Focus and a great first calf heifer out of Gunnison. I don't know if there is any better combination for a calving ease Balancer sire... In Focus X Gunnison.

38% BALANCER HOMOZYGOUS BLACK DOUBLE POLLED BULL

**Lot 57** **TAU MR IN FOCUS 80B**

★ Calved: February 9, 2014 ★ Tattoo: TAU 80B ★ Reg. #: AMGV1287248

**Birth Weight: 74 Adj. 205-day Wt: 655**

S A F Focus of E R  
**MYTTY IN FOCUS**  
 Mytty Countess 906

ELK CK Wild Bill 42U  
**TAU TAU MS WILD BILL 2162Z**  
 TAU Ms Freedom 711T

| CED | BW   | WW | YW  | MK | TM | CEM | ST | YG   | CW | REA | MB  | FT   | FPI   |
|-----|------|----|-----|----|----|-----|----|------|----|-----|-----|------|-------|
| 17  | -1.6 | 62 | 100 | 22 | 53 | 9   | 5  | -.04 | 26 | .26 | .45 | -.01 | 80.38 |

80B- Yet another In Focus son that is sure shot calving ease. 80B is soggy middled, wide made, and heavy muscled.

50% BALANCER BLACK DOUBLE POLLED BULL

**Lot 58** **TAU MR TOP GUN 259Y 81B**

★ Calved: February 9, 2014 ★ Tattoo: TAU 81B ★ Reg. #: AMGV1287875

**Birth Weight: 88 Adj. 205-day Wt: 742**

TAU Mr Grid Topper 43T  
**TAU TOP GUN 292Y**  
 TAU Ms 4153P

BUF BFCK Cherokee Cnyn 4912  
**TAU MISS CHEROKEE 7114T**  
 TAU Miss Freedom 2186M

| CED | BW  | WW | YW  | MK | TM | CEM | ST | YG   | CW | REA | MB  | FT   | FPI   |
|-----|-----|----|-----|----|----|-----|----|------|----|-----|-----|------|-------|
| 11  | 0.5 | 77 | 109 | 17 | 55 | 5   | 5  | -.08 | 35 | .42 | .14 | -.02 | 76.35 |

81B- Here is a very powerfully constructed son of Top Gun 292Y backed by a good Cherokee Canyon daughter. 81B exhibits a lot of top shape and expression, and he is powerful out of his hip as well.

50% BALANCER HOMOZYGOUS BLACK DOUBLE POLLED BULL

**Lot 59** **TAU MR COUNTDOWN 59Y 83B**

★ Calved: February 9, 2014 ★ Tattoo: TAU 83B ★ Reg. #: AMGV1287925

**Birth Weight: 85 Adj. 205-day Wt: 723**

S A V Final Answer 0035  
**TAU FINAL COUNTDOWN 59Y**  
 TAU Ms Gunnison 7211T ET

TAU Gunnison N31 205R  
**TAU MS GUNNISON 205R 9187W**  
 TAU Miss Traveler 2T22 701T

| CED | BW  | WW | YW  | MK | TM | CEM | ST | YG  | CW | REA | MB  | FT   | FPI   |
|-----|-----|----|-----|----|----|-----|----|-----|----|-----|-----|------|-------|
| 13  | 0.9 | 82 | 118 | 26 | 67 | 8   | 5  | -.1 | 40 | .61 | .18 | -.02 | 81.63 |

83B- A son of the Final Countdown 59Y bull we sold in our sale a couple of years ago. 83B is definitely correct in his build and massive with a great set of EPD's to boot.

50% BALANCER DOUBLE BLACK DOUBLE POLLED BULL

**Lot 60** **TAU MR HARVESTORE 74B**

★ Calved: February 8, 2014 ★ Tattoo: TAU 74B ★ Reg. #: AMGV1287873

**Birth Weight: 100** **Adj. 205-day Wt: 752**

S A V Heritage 6295

**S A V HARVESTOR 0338**

S A V Emblynette 7749

BABR Tsunami 447P

**TAU MISS TSUNAMI 880U**

TAU Miss Rodeo Drive 321N

| CED | BW  | WW | YW  | MK | TM | CEM | ST | YG   | CW | REA | MB  | FT  | FPI   |
|-----|-----|----|-----|----|----|-----|----|------|----|-----|-----|-----|-------|
| NA  | 3.4 | 72 | 117 | 29 | 65 | 3   | NA | -.17 | 44 | .72 | .28 | .03 | 72.80 |

74B- A son of the high selling SAV Harvester, 74B is extremely thick and heavy muscled. He is big footed, wide made and expressively muscled, and there is no doubt in my mind that he will add pounds to a calf crop.



Lot 60

63% BALANCER RED DOUBLE POLLED BULL

**Lot 61** **TAU MR GRID TOPPER 43T 85B**

★ Calved: February 9, 2014 ★ Tattoo: TAU 85B ★ Reg. #: AMGV1287262

**Birth Weight: 82** **Adj. 205-day Wt: 748**

TC Grid Topper 355

**TAU MR GRID TOPPER 43T**

TAU Miss Ty 3130N

ELK CK Wild Bill 42U

**TAU MS WILD BILL 1075Y**

TAU Miss Bando 841U

| CED | BW  | WW | YW  | MK | TM | CEM | ST | YG   | CW | REA | MB | FT   | FPI   |
|-----|-----|----|-----|----|----|-----|----|------|----|-----|----|------|-------|
| 11  | 0.8 | 74 | 101 | 13 | 47 | 7   | 5  | -.31 | 31 | .58 | .2 | -.03 | 73.18 |

85B- Here is a 43T son that is stamped with the look we have come to expect from his sire. 85B is deep bodied, bold ribbed and thick made, and there I know he will consistently pass this look on to his calves.

50% BALANCER DOUBLE BLACK DOUBLE POLLED BULL

**Lot 62** **TAU MR TOP GUN 292Y 87B**

★ Calved: February 9, 2014 ★ Tattoo: TAU 87B ★ Reg. #: AMGV1287927

**Birth Weight: 84** **Adj. 205-day Wt: 742**

TAU Mr Grid Topper 43T

**TAU TOP GUN 292Y**

TAU Ms 4153P

Connealy Danny Boy

**TAU MISS DANNY BOY 800U**

TAU Ms Gunnison 657S

| CED | BW  | WW | YW  | MK | TM | CEM | ST | YG  | CW | REA | MB  | FT   | FPI   |
|-----|-----|----|-----|----|----|-----|----|-----|----|-----|-----|------|-------|
| 12  | 0.3 | 80 | 115 | 17 | 56 | 8   | 7  | -.1 | 38 | .57 | .17 | -.02 | 78.35 |

87B- A son of Top Gun 292Y, that is backed by a great Connealy Danny Boy daughter. 87B is packed with growth and performance. He is a larger framed sire that is long bodied.

38% BALANCER DOUBLE BLACK DOUBLE POLLED BULL

**Lot 63** **TAU MR IRON MAN 250Y 88B**

★ Calved: February 10, 2014 ★ Tattoo: TAU 88B ★ Reg. #: AMGV1288150

**Birth Weight: 86** **Adj. 205-day Wt: 712**

TC Gridiron 782

**TAU MR GRIDIRON 250Y**

TAU Ms Tsunami 8217U

SDCC Virginian 318T

**TAU TAU MS VIRGINIAN 2000Z**

TAU Ms Night Moves 9184W

| CED | BW  | WW | YW  | MK | TM | CEM | ST | YG   | CW | REA | MB  | FT   | FPI   |
|-----|-----|----|-----|----|----|-----|----|------|----|-----|-----|------|-------|
| 9   | 1.9 | 74 | 112 | 18 | 55 | 6   | 3  | -.05 | 38 | .34 | .14 | -.03 | 72.64 |

88B- Here is a son of "Iron Man" 250Y, who we sold on our sale a few years ago. 88B is good at the ground and maintains this into a powerful top and hip. He will definitely add muscle to a calf crop.

50% BALANCER BLACK DOUBLE POLLED BULL

**Lot 64** **TAU MR BIG DOG 89B**

★ Calved: February 10, 2014 ★ Tattoo: TAU 89B ★ Reg. #: AMGV1288088

**Birth Weight: 82** **Adj. 205-day Wt: 927**

HYEK Black Impact 3960N

**PLA BIG DOG 101Y**

EGL P190

OGF OGF Patriot Marble L006

**OVER UH-HVH 806U**

HXC HXC Raven 6003S

| CED | BW  | WW | YW | MK | TM | CEM | ST | YG   | CW | REA | MB | FT   | FPI   |
|-----|-----|----|----|----|----|-----|----|------|----|-----|----|------|-------|
| 8   | 1.4 | 85 | 91 | 21 | 54 | 1   | 3  | -.29 | 25 | .31 | 0  | -.04 | 75.10 |

89B- A son of Big Dog, a bull that goes back to Black Impact. 89B is out of a great Red Angus cow that always raises a good one. 89B is a high performing bull that weaned off the cow at a whopping 927 pounds.

50% BALANCER HOMOZYGOUS BLACK DOUBLE POLLED BULL

**Lot 65** **TAU MR TOP GUN 292Y 96B**

★ Calved: February 11, 2014 ★ Tattoo: TAU 96B ★ Reg. #: AMGV1287931

**Birth Weight: 89** **Adj. 205-day Wt: 843**

TAU Mr Grid Topper 43T

**TAU TOP GUN 292Y**

TAU Ms 4153P

S S Traveler T510 2T22

**TAU MS TRAVELER 2T22 805U**

TAU Ms Sleepy 6125S

| CED | BW  | WW | YW  | MK | TM | CEM | ST | YG   | CW | REA | MB  | FT | FPI   |
|-----|-----|----|-----|----|----|-----|----|------|----|-----|-----|----|-------|
| 12  | 0.6 | 75 | 112 | 21 | 58 | 10  | 4  | -.03 | 37 | .46 | .15 | 0  | 76.12 |

96B- Here is a truly unique son of Top Gun 292Y. 96B is out of one of the easiest keeping, and eye appealing balancers on the place. He is moderate in his build, and as deep and sound as they come. We expect big things from this herdsire, and he will be making the trip to Denver in our pen of 5.



Lot 65



50% BALANCER HOMOZYGOUS BLACK DOUBLE POLLED BULL

**Lot 66** | **TAU MR FINAL COUNTDOWN 59Y 90B**

★ Calved: February 10, 2014 ★ Tattoo: TAU 90B ★ Reg. #: AMGV1287929  
**Birth Weight: 84**      **Adj. 205-day Wt: 696**  
 S A V Final Answer 0035  
**TAU FINAL COUNTDOWN 59Y**  
 TAU Ms Gunnison 7211T ET  
 GMCC Ruppel Gunnison N31  
**TAU MS GUNNISON 7116T**  
 TAU Ms TC Freedom 545RA

| CED | BW  | WW | YW  | MK | TM | CEM | ST | YG   | CW | REA | MB | FT   | FPI   |
|-----|-----|----|-----|----|----|-----|----|------|----|-----|----|------|-------|
| 13  | 0.7 | 81 | 110 | 25 | 64 | 8   | 6  | -.14 | 36 | .65 | .2 | -.02 | 79.47 |

90B- A son of Final Countdown 59Y and out of a very maternal Gunnison daughter. 90B has the look to make a great herdsire, as he is deep and stout.

63% BALANCER HOMOZYGOUS BLACK DOUBLE POLLED BULL

**Lot 68** | **TAU MR GUNNISON 92B**

★ Calved: February 11, 2014 ★ Tattoo: TAU 92B ★ Reg. #: AMGV1303708  
**Birth Weight: 82**      **Adj. 205-day Wt: 664**  
 VRT RUP Lazy TV Hotfudge J357  
**GMCC RUPPLE GUNNISON N31**  
 RUP Ruppel 919L  
 DMRS Mr Legend 007X  
**TAU MS LEGEND 2110Z**  
 TAU Ms Gunnison 8190U

| CED | BW  | WW | YW | MK | TM | CEM | ST | YG   | CW | REA | MB  | FT   | FPI   |
|-----|-----|----|----|----|----|-----|----|------|----|-----|-----|------|-------|
| 16  | 1.8 | 58 | 83 | 26 | 56 | 6   | 5  | -.37 | 19 | .66 | .09 | -.02 | 65.85 |

92B- Here is another calving ease option that is out of the great Gunnison bull. 92B is out of a moderate framed and easy fleshing first calf heifer. He is deep and stout.

50% BALANCER BLACK DOUBLE POLLED BULL

**Lot 70** | **TAU MR COUNTRY BOY 100B**

★ Calved: February 11, 2014 ★ Tattoo: TAU 100B ★ Reg. #: AMGV1287284  
**Birth Weight: 82**      **Adj. 205-day Wt: 680**  
 Connealy Consensus  
**CONNELY CONSENSUS 7229**  
 Blue Lilly of Conanga 16  
 SLC Freedom 178F ET  
**TAU TAU FREEDOM 452P**  
 TAU Ms Blacksmith 756G

| CED | BW   | WW | YW | MK | TM | CEM | ST | YG   | CW | REA | MB  | FT   | FPI   |
|-----|------|----|----|----|----|-----|----|------|----|-----|-----|------|-------|
| 12  | -0.2 | 66 | 97 | 32 | 65 | 9   | 4  | -.16 | 28 | .53 | .33 | -.03 | 77.67 |

100B- A stout son of Connealy Consensus here that is backed by a great 10 year old Freedom daughter. 100B is bold ribbed and expressively muscled.

38% BALANCER HOMOZYGOUS BLACK DOUBLE POLLED BULL

**Lot 72** | **TAU MR HARVESTOR 99B**

★ Calved: February 11, 2014 ★ Tattoo: TAU 99B ★ Reg. #: AMGV1290273  
**Birth Weight: 92**      **Adj. 205-day Wt: 818**  
 S A V Heritage 6295  
**S A V HARVESTOR 0338**  
 S A V Emblynette 7749  
 GMCC Ruppel Gunnison N31  
**TAU MS GUNNISON 7211T ET**  
 TAU Ms Dr P of 516E 716G

| CED | BW  | WW | YW  | MK | TM | CEM | ST | YG  | CW | REA | MB  | FT  | FPI   |
|-----|-----|----|-----|----|----|-----|----|-----|----|-----|-----|-----|-------|
| 3   | 2.8 | 84 | 133 | 32 | 72 | 1   | 5  | .07 | 54 | .65 | .44 | .04 | 84.76 |

99B- This calf here is special because of his power and performance. 99B is a son of SAV Harvester that goes back to 7211T, the mother of Final Countdown 59Y. He is a larger framed bull that is as long bodied as they come. Check out his picture and you will see how thick and expressive he is too. Don't miss this guy on sale day.

63% BALANCER HOMOZYGOUS BLACK DOUBLE POLLED BULL

**Lot 67** | **TAU MR GUNNISON 91B**

★ Calved: February 10, 2014 ★ Tattoo: TAU 91B ★ Reg. #: AMGV1287276  
**Birth Weight: 73**      **Adj. 205-day Wt: 728**  
 VRT RUP Lazy TV Hotfudge J357  
**GMCC RUPPLE GUNNISON N31**  
 RUP Ruppel 919L  
 Mytty In Focus  
**TAU TAU MS IN FOCUS 223Z**  
 TAU Ms Gunnison 106R 0146X

| CED | BW | WW | YW | MK | TM | CEM | ST | YG   | CW | REA | MB  | FT   | FPI   |
|-----|----|----|----|----|----|-----|----|------|----|-----|-----|------|-------|
| 17  | 0  | 66 | 93 | 29 | 63 | 8   | 5  | -.38 | 24 | .66 | .15 | -.03 | 74.87 |

91B- A double bred calving ease son of Gunnison and out of a good In Focus daughter. 91B hit the ground at 73 pounds and weaned off the cow at 728 pounds. This calf his sleep at night calving ease with plenty of growth to boot.

13% GELBIEH HOMOZYGOUS BLACK DOUBLE POLLED BULL

**Lot 69** | **TAU MR GRIDIRON 782 95B**

★ Calved: February 11, 2014 ★ Tattoo: TAU 95B ★ Reg. #: AMGV1287930  
**Birth Weight: 88**      **Adj. 205-day Wt: 737**  
 TC Gridiron 258  
**TC GRIDIRON 782**  
 TC Quality 3161  
 TC Gridiron 258  
**TAU MS GRIDIRON 914W**  
 TAU Miss Sleepy 2103M

| CED | BW  | WW | YW  | MK | TM | CEM | ST | YG   | CW | REA | MB | FT   | FPI   |
|-----|-----|----|-----|----|----|-----|----|------|----|-----|----|------|-------|
| 9   | 1.3 | 66 | 101 | 20 | 50 | 8   | -1 | -.16 | 30 | .65 | .4 | -.02 | 75.93 |

95B- A low percentage Gelbvieh bull that goes back to TC Gridiron 258. He exhibits a great set of EPD's and has a great look as well. Level made, sound structured and expressively muscled.

38% BALANCER HOMOZYGOUS BLACK DOUBLE POLLED BULL

**Lot 71** | **TAU FINAL TAKE 104B**

★ Calved: February 11, 2014 ★ Tattoo: TAU 104B ★ Reg. #: AMGV1290255  
**Birth Weight: 85**      **Adj. 205-day Wt: 790**  
 S A V Final Answer 0035  
**TAU FINAL COUNTDOWN 59Y**  
 TAU Ms Gunnison 7211T ET  
 TAU Mr Grid Topper 43T  
**TAU MS 43T 037X**  
 TAU Miss T510 2T22 730T

| CED | BW  | WW | YW  | MK | TM | CEM | ST | YG   | CW | REA | MB  | FT | FPI   |
|-----|-----|----|-----|----|----|-----|----|------|----|-----|-----|----|-------|
| 13  | 1.1 | 83 | 123 | 19 | 60 | 7   | 5  | -.03 | 44 | .55 | .26 | 0  | 82.66 |

104B- Here is a son of Final Countdown 59Y that is very high performing and growthy. 104B weaned off the cow at 790 pounds, and his EPD's read with the same growth. Today pounds sell, and this guy will make you a lot of money that way.



Lot 72

38% BALANCER HOMOZYGOUS BLACK DOUBLE POLLED BULL

**Lot 73** **TAU MR TOP GUN 292Y 106B**

★ Calved: February 11, 2014 ★ Tattoo: TAU 106B ★ Reg. #: AMGV1287932

**Birth Weight: 90** **Adj. 205-day Wt: 781**TAU Mr Grid Topper 43T  
**TAU TOP GUN 292Y**  
TAU Ms 4153PS A V Final Answer 0035  
**TAU MS FINAL ANSWER 985W**  
TAU Ms Big N'Rich 7194T ET

| CED | BW  | WW | YW  | MK | TM | CEM | ST | YG   | CW | REA | MB  | FT   | FPI   |
|-----|-----|----|-----|----|----|-----|----|------|----|-----|-----|------|-------|
| 13  | 0.4 | 80 | 114 | 20 | 58 | 10  | 6  | -.03 | 37 | .38 | .23 | -.01 | 80.23 |

106B- A growthy son of Top Gun 292Y here. 106B is expressive topped and wide made, also don't overlook the fact that he weaned off the cow at 781 pounds.

50% BALANCER DOUBLE BLACK DOUBLE POLLED BULL

**Lot 75** **TAU MR DERRINGER 114B**

★ Calved: February 12, 2014 ★ Tattoo: TAU 114B ★ Reg. #: AMGV1287302

**Birth Weight: 86** **Adj. 205-day Wt: 774**TAU Gunslinger 19U  
**DJS DERRINGER 96X**  
Miss 004-76TDMRS Mr TC Total 048X  
**TAU TAU MS TOTAL 2056Z**  
TAU Ms Freedom 607S

| CED | BW | WW | YW | MK | TM | CEM | ST | YG   | CW | REA | MB  | FT   | FPI   |
|-----|----|----|----|----|----|-----|----|------|----|-----|-----|------|-------|
| 14  | 0  | 60 | 78 | 29 | 54 | 9   | 6  | -.45 | 15 | .71 | .13 | -.04 | 69.70 |

114B- Another son of the calving ease sire Derringer and a first calf heifer. 114B is great in his build, deep bodied and stout featured.

50% BALANCER HOMOZYGOUS BLACK DOUBLE POLLED BULL

**Lot 77** **TAU MR WINDY 078 118B**

★ Calved: February 13, 2014 ★ Tattoo: TAU 118B ★ Reg. #: AMGV1287305

**Birth Weight: 85** **Adj. 205-day Wt: 765**H A R B Windy 702 JH  
**APEX WINDY 078**  
Apexette Lucy 6037BABR Tsunami 447P  
**TAU MS TSUNAMI 7203T**  
TAU Miss Ty 492P

| CED | BW  | WW | YW  | MK | TM | CEM | ST | YG  | CW | REA | MB | FT | FPI   |
|-----|-----|----|-----|----|----|-----|----|-----|----|-----|----|----|-------|
| 9   | 1.2 | 81 | 107 | 33 | 71 | 6   | 3  | .01 | 34 | .26 | .2 | 0  | 79.28 |

118B- Another one of Windy 078 here. 118B is level made and built good at the ground. He is also heavy muscled and wide based.

50% BALANCER HOMOZYGOUS BLACK DOUBLE POLLED BULL

**Lot 79** **TAU MR TOP GUN 121B**

★ Calved: February 13, 2014 ★ Tattoo: TAU 121B ★ Reg. #: AMGV1287996

**Birth Weight: 93** **Adj. 205-day Wt: 739**TAU Mr Grid Topper 43T  
**TAU TOP GUN 292Y**  
TAU Ms 4153PS S Traveler T510 2T22  
**TAU MISS TRAVELER 2T22 701T**  
TAU Sleepy 5234R

| CED | BW  | WW | YW  | MK | TM | CEM | ST | YG   | CW | REA | MB  | FT   | FPI   |
|-----|-----|----|-----|----|----|-----|----|------|----|-----|-----|------|-------|
| 12  | 0.6 | 79 | 118 | 22 | 60 | 10  | 4  | -.03 | 40 | .46 | .18 | -.01 | 79.31 |

121B- Here is a calf that is a maternal brother to Fine Tuned 30Z who was the high seller on our sale in 2013. 121B isn't a slouch either, as he is sired by Top Gun 292Y, attractive from the side and packed with meat and muscle.

38% BALANCER HOMOZYGOUS BLACK DOUBLE POLLED BULL

**Lot 74** **TAU MR WINDY 078 107B**

★ Calved: February 11, 2014 ★ Tattoo: TAU 107B ★ Reg. #: AMGV1287291

**Birth Weight: 86** **Adj. 205-day Wt: 691**H A R B Windy 702 JH  
**APEX WINDY 078**  
Apexette Lucy 6037SGRI Honor Roll S232  
**TAU MS HONOR ROLL 8127U**  
TAU Ms Gunnison 5150R

| CED | BW  | WW | YW  | MK | TM | CEM | ST | YG   | CW | REA | MB | FT | FPI   |
|-----|-----|----|-----|----|----|-----|----|------|----|-----|----|----|-------|
| 9   | 1.6 | 75 | 107 | 35 | 72 | 6   | 4  | -.07 | 35 | .49 | .2 | 0  | 77.31 |

107B- A great cow family represented here, as this calf goes back to 5150R on the dam's side of the pedigree. 107B is a deep and functional son of the Accelerated Genetics sire Windy 078.

50% BALANCER DOUBLE BLACK DOUBLE POLLED BULL

**Lot 76** **TAU MR WISDOM 117B**

★ Calved: February 12, 2014 ★ Tattoo: TAU 117B ★ Reg. #: AMGV1287304

**Birth Weight: 88** **Adj. 205-day Wt: 752**Connealy Onward  
**SITZ WISDOM 481T**  
Sitz Elluna Elite 94PTAU Gunnison 106R  
**TAU MS GUNNISON 106R 8194U**  
TAU Ms Power Pac 9070 4131P

| CED | BW   | WW | YW  | MK | TM | CEM | ST | YG  | CW | REA | MB  | FT   | FPI   |
|-----|------|----|-----|----|----|-----|----|-----|----|-----|-----|------|-------|
| 12  | -0.2 | 69 | 108 | 29 | 63 | 4   | 2  | -.1 | 34 | .52 | .41 | -.01 | 80.40 |

117B- Here is a son of Sitz Wisdom out of a great cow that goes back to Gunnison. 117B is long bodied and powerfully constructed. He weaned off the cow at 752 pounds.

50% BALANCER HOMOZYGOUS BLACK DOUBLE POLLED BULL

**Lot 78** **TAU MR FOCUS 119B**

★ Calved: February 13, 2014 ★ Tattoo: TAU 119B ★ Reg. #: AMGV1303261

**Birth Weight: 80** **Adj. 205-day Wt: 818**Mytty In Focus  
**TAU TAU MR IN FOCUS 22Z**  
TAU Ms Gunnison 028XDJS 99X  
**TAU MS GUNSLINGER 2136Z**  
TAU Ms Krugerrand 70M 7222T

| CED | BW  | WW | YW | MK | TM | CEM | ST | YG   | CW | REA | MB  | FT   | FPI   |
|-----|-----|----|----|----|----|-----|----|------|----|-----|-----|------|-------|
| 14  | 0.7 | 72 | 98 | 27 | 60 | 10  | 5  | -.31 | 27 | .54 | .54 | -.02 | 85.76 |

119B- A son of In Focus 22Z that goes back to Gunslinger 19U on the maternal side. This calf is a growth machine. He hit the ground at 80 pounds and weaned off at 818 pounds. I would expect this option to add pounds to his progeny.

50% BALANCER HOMOZYGOUS BLACK DOUBLE POLLED BULL

**Lot 80** **TAU MR TUNED IN 126B**

★ Calved: February 14, 2014 ★ Tattoo: TAU 126B ★ Reg. #: AMGV1287313

**Birth Weight: 91** **Adj. 205-day Wt: 690**TC Grid Topper 355  
**TAU TUNED IN 55T**  
TAU Miss Freedom 306NTAU Krugerrand 70M  
**TAU MS KRUGERRAND 70M 7180T**  
TAU Ms Power Pac 9070 4115P

| CED | BW  | WW | YW | MK | TM | CEM | ST | YG   | CW | REA | MB  | FT   | FPI   |
|-----|-----|----|----|----|----|-----|----|------|----|-----|-----|------|-------|
| 11  | 0.8 | 62 | 98 | 22 | 53 | 10  | 1  | -.24 | 30 | .36 | .19 | -.02 | 70.12 |

126B- Here is a high performing, stout made son of Tuned In 55T. This calf is extremely long and growthy, and packs a ton of muscle and expression into his frame.



50% BALANCER HOMOZYGOUS BLACK DOUBLE POLLED BULL

**Lot 81** **TAU MR WINDY 078 127B**

★ Calved: February 14, 2014 ★ Tattoo: TAU 127B ★ Reg. #: AMGV1287314

**Birth Weight: 84 Adj. 205-day Wt: 742**

H A R B Windy 702 JH

**APEX WINDY 078**

Apexette Lucy 6037

GMCC Ruppel Gunnison N31

**TAU MS GUNNISON 588R**

TAU Miss Freedom 2191M

| GED | BW  | WW | YW  | MK | TM | CEM | ST | YG   | CW | REA | MB  | FT | FPI   |
|-----|-----|----|-----|----|----|-----|----|------|----|-----|-----|----|-------|
| 12  | 0.6 | 74 | 106 | 35 | 71 | 6   | 4  | -.04 | 33 | .43 | .21 | 0  | 77.22 |

127B- A complete son of Apex Windy 078. 127B is attractive from the side, sound structured and powerfully constructed. This calf has longevity written all over him as soon to be 10 year old dam has stood the test of time.



Lot 81

38% BALANCER BLACK DOUBLE POLLED BULL

**Lot 82** **TAU MR WISDOM 128B**

★ Calved: February 14, 2014 ★ Tattoo: TAU 128B ★ Reg. #: AMGV1287314

**Birth Weight: 88 Adj. 205-day Wt: 761**

Connealy Onward

**SITZ WISDOM 481T**

Sitz Elluna Elite 94P

TAU Mr Sleepy 204P

**TAU MS SLEEPY 204P 7263T**

TAU Miss Dee 404D

| GED | BW  | WW | YW  | MK | TM | CEM | ST | YG   | CW | REA | MB  | FT   | FPI   |
|-----|-----|----|-----|----|----|-----|----|------|----|-----|-----|------|-------|
| 11  | 0.1 | 66 | 105 | 30 | 62 | 5   | 3  | -.09 | 33 | .43 | .38 | -.02 | 76.85 |

128B- A powerful Wisdom son, with a lot of muscle shape and thickness. This calf weaned off his dam at 761 pounds, and he is backed by a great set of EPD's.

50% BALANCER HOMOZYGOUS BLACK DOUBLE POLLED BULL

**Lot 84** **TAU MR TUNED IN 137B**

★ Calved: February 16, 2014 ★ Tattoo: TAU 137B ★ Reg. #: AMGV1287345

**Birth Weight: 92 Adj. 205-day Wt: 806**

TC Grid Topper 355

**TAU TUNED IN 55T**

TAU Miss Freedom 306N

TC Grid Topper 355

**TAU MS GRID TOPPER 0173X**

TAU Ms Gunnison 531R

| GED | BW  | WW | YW  | MK | TM | CEM | ST | YG  | CW | REA | MB  | FT   | FPI   |
|-----|-----|----|-----|----|----|-----|----|-----|----|-----|-----|------|-------|
| 12  | 0.9 | 72 | 101 | 18 | 49 | 11  | 2  | -.3 | 31 | .62 | .23 | -.01 | 71.33 |

137B- Here is a son of Tuned In 55T who we use to add some frame to more moderate framed cows. 137B is built a lot like his sire, as he is high performing and expressively muscled.

50% BALANCER BLACK DOUBLE POLLED BULL

**Lot 86** **TAU MR CONSENSUS 143B**

★ Calved: February 17, 2014 ★ Tattoo: TAU 143B ★ Reg. #: AMGV1287361

**Birth Weight: 90 Adj. 205-day Wt: 680**

Connealy Consensus

**CONNEALY CONSENSUS 7229**

Blue Lilly of Conanga 16

SLC Freedom 178F ET

**TAU MISS FREEDOM 790T**

TAU Ms Stuart 6105F

| GED | BW  | WW | YW  | MK | TM | CEM | ST | YG   | CW | REA | MB  | FT   | FPI   |
|-----|-----|----|-----|----|----|-----|----|------|----|-----|-----|------|-------|
| 11  | 0.8 | 65 | 105 | 33 | 67 | 7   | 1  | -.16 | 34 | .57 | .35 | -.03 | 76.79 |

143B- Here is a powerful son of Connealy Consensus. He carries a lot of muscle shape up high and is wide at the ground.

63% BALANCER DOUBLE BLACK DOUBLE POLLED BULL

**Lot 83** **TAU MR BIG DOG 132B**

★ Calved: February 15, 2014 ★ Tattoo: TAU 132B ★ Reg. #: AMGV1287320

**Birth Weight: 91 Adj. 205-day Wt: 725**

HYEK Black Impact 3960N

**PLA BIG DOG 101Y**

EGL P190

TJB Night Moves 593R ET

**TAU MS NIGHT MOVES 0214X**

TAU Ms Rodeo Drive 6138S

| GED | BW  | WW | YW  | MK | TM | CEM | ST | YG   | CW | REA | MB   | FT   | FPI   |
|-----|-----|----|-----|----|----|-----|----|------|----|-----|------|------|-------|
| 6   | 1.6 | 80 | 114 | 22 | 65 | 1   | 5  | -.33 | 39 | .35 | -.16 | -.07 | 69.67 |

132B- Here is a high performing and stout featured son of the purebred A.I. sire Big Dog. 132B has a ton of foot and bone, and is packed with rib shape and muscle.

50% BALANCER HOMOZYGOUS BLACK DOUBLE POLLED BULL

**Lot 85** **TAU MR GOODNIGHT 141B**

★ Calved: February 17, 2014 ★ Tattoo: TAU 141B ★ Reg. #: AMGV1287351

**Birth Weight: 70 Adj. 205-day Wt: 702**

CTR Good Night 4743P

**CTR GOOD NIGHT 715T**

CTR Poll Star 5160E

H A R B Windy 702 JH

**TAU TAU MS WINDY 229Z**

TAU Miss Ty 489P

| GED | BW   | WW | YW | MK | TM | CEM | ST | YG  | CW | REA | MB   | FT   | FPI   |
|-----|------|----|----|----|----|-----|----|-----|----|-----|------|------|-------|
| 14  | -1.0 | 66 | 94 | 19 | 51 | 9   | 4  | -.2 | 25 | .19 | -.03 | -.02 | 68.83 |

141B- An attractive son of Good Night here. 141B is level made, square hipped and sound structured. He is also a sure shot calving ease sire being out of a first calf heifer and hitting the ground at 70 pounds.

50% BALANCER HOMOZYGOUS BLACK DOUBLE POLLED BULL

**Lot 87** **TAU MR WISDOM 145B**

★ Calved: February 18, 2014 ★ Tattoo: TAU 145B ★ Reg. #: AMGV1303718

**Birth Weight: 80 Adj. 205-day Wt: 753**

Connealy Onward

**SITZ WISDOM 481T**

Sitz Elluna Elite 94P

GMCC Ruppel Gunnison N31

**TAU MS FANCY LADY 986W ET**

TAU Ms Sleepy 920J

| GED | BW  | WW | YW  | MK | TM | CEM | ST | YG   | CW | REA | MB  | FT   | FPI   |
|-----|-----|----|-----|----|----|-----|----|------|----|-----|-----|------|-------|
| 12  | 0.3 | 70 | 108 | 29 | 62 | 4   | 2  | -.14 | 34 | .73 | .46 | -.01 | 82.77 |

145B- A son of Sitz Wisdom backed by a great Gunnison cow. 145B is capacious, heavy muscled, and he weaned off the cow at 753 to boot.

50% BALANCER BLACK DOUBLE POLLED BULL

**Lot 88** **TAU MR TOP GUN 146B**

★ Calved: February 18, 2014 ★ Tattoo: TAU 146B ★ Reg. #: AMGV1287377

**Birth Weight: 90** **Adj. 205-day Wt: 718**

TAU Mr Grid Topper 43T

**TAU TOP GUN 292Y**

TAU Ms 4153P

CPH Glacier Red Rock 794

**TAU MS RED ROCK 7233T**

TAU Miss Freedom 2204M

| CED | BW  | WW | YW | MK | TM | CEM | ST | YG   | CW | REA | MB  | FT   | FPI   |
|-----|-----|----|----|----|----|-----|----|------|----|-----|-----|------|-------|
| 9   | 0.8 | 68 | 97 | 17 | 51 | 8   | 1  | -.07 | 28 | .24 | .06 | -.04 | 67.91 |

146B- Another son of Top Gun 292Y. 146B is extended, level, and sound structured. Also, this guy is massive and wide at the ground.

50% BALANCER HOMOZYGOUS BLACK DOUBLE POLLED BULL

**Lot 90** **TAU MR IRON MAN 149B**

★ Calved: February 19, 2014 ★ Tattoo: TAU 149B ★ Reg. #: AMGV1287381

**Birth Weight: 87** **Adj. 205-day Wt: 755**

TC Gridiron 782

**TAU MR GRIDIRON 250Y**

TAU Ms Tsunami 8217U

S A V Final Answer 0035

**TAU MS FINAL ANSWER 912W**

TAU Ms Gunnison 106R 7155T

| CED | BW   | WW | YW  | MK | TM | CEM | ST | YG   | CW | REA | MB | FT   | FPI   |
|-----|------|----|-----|----|----|-----|----|------|----|-----|----|------|-------|
| 11  | -0.1 | 71 | 108 | 24 | 60 | 9   | 6  | -.11 | 34 | .49 | .2 | -.02 | 76.38 |

149B- Another son of 250Y. This calf is backed by a great Final Answer daughter. He weaned off his dam at 755 pounds and is extremely stout and powerful.

25% BALANCER BLACK DOUBLE POLLED BULL

**Lot 92** **TAU MR GRIDIRON 782 157B**

★ Calved: February 19, 2014 ★ Tattoo: TAU 157B ★ Reg. #: AMGV1303997

**Birth Weight: 85** **Adj. 205-day Wt: 712**

TC Gridiron 258

**TC GRIDIRON 782**

TC Quality 3161

BUF BFCK Cherokee Cnyn 4912

**TAU MISS CC 8111U**

TAU Miss Power Pac 2202M

| CED | BW   | WW | YW | MK | TM | CEM | ST | YG   | CW | REA  | MB  | FT    | FPI   |
|-----|------|----|----|----|----|-----|----|------|----|------|-----|-------|-------|
| 11  | -0.3 | 69 | 92 | 23 | 54 | NA  | NA | -.12 | 23 | 0.54 | 0.3 | -0.01 | 74.15 |

157B- A son of TC Gridiron 782 here that is attractive and stout featured. He is backed by a great red Cherokee Canyon cow as well.

50% BALANCER BLACK DOUBLE POLLED BULL

**Lot 93** **TAU MR CONSENSUS 164B**

★ Calved: February 20, 2014 ★ Tattoo: TAU 164B ★ Reg. #: AMGV1303713

**Birth Weight: 88** **Adj. 205-day Wt: 786**

Connealy Consensus

**CONNELLY CONSENSUS 7229**

Blue Lilly of Conanga 16

TAU Mr Sleepy 204P

**TAU MS SLEEPY 204P 7168T**

TAU Miss XXB Drew 276M

| CED | BW  | WW | YW  | MK | TM | CEM | ST | YG   | CW | REA | MB  | FT   | FPI   |
|-----|-----|----|-----|----|----|-----|----|------|----|-----|-----|------|-------|
| 9   | 1.4 | 74 | 102 | 33 | 68 | 8   | 2  | -.21 | 31 | .63 | .55 | -.04 | 85.21 |

164B- A super stout and powerful son of Connealy Consensus. This calf weaned off the cow at 786 pounds. He is packed with muscle, foot, and bone.

50% BALANCER DOUBLE BLACK DOUBLE POLLED BULL

**Lot 89** **TAU MR IRON MAN 148B**

★ Calved: February 19, 2014 ★ Tattoo: TAU 148B ★ Reg. #: AMGV1287380

**Birth Weight: 90** **Adj. 205-day Wt: 745**

TC Gridiron 782

**TAU MR GRIDIRON 250Y**

TAU Ms Tsunami 8217U

TC Freedom 104

**TAU MS TC FREEDOM 6113S**

TAU 083K

| CED | BW | WW | YW | MK | TM | CEM | ST | YG   | CW | REA | MB  | FT   | FPI   |
|-----|----|----|----|----|----|-----|----|------|----|-----|-----|------|-------|
| 10  | 1  | 65 | 97 | 23 | 56 | 8   | 4  | -.15 | 28 | .41 | .09 | -.04 | 68.29 |

148B- A son of "Ironman" 250Y that is out of a high performing TC Freedom daughter. 148B is stout featured and growthy. In todays market a herdsire like this is a must have as he will add pounds to a calf crop.

38% BALANCER DOUBLE BLACK DOUBLE POLLED BULL

**Lot 91** **TAU MR PROSPERITY 151B**

★ Calved: February 19, 2014 ★ Tattoo: TAU 151B ★ Reg. #: AMGV1288295

**Birth Weight: 85** **Adj. 205-day Wt: 860**

S A V Prosperity 9131

**VISION PROSPERITY 2324**

Top Line Lassie 0849

VRT RUP Lazy TV Hotfudge J357

**TAU MS HOT FUDGE 9133W**

TAU Miss Dateline 3138N

| CED | BW  | WW | YW  | MK | TM | CEM | ST | YG | CW | REA  | MB   | FT    | FPI |
|-----|-----|----|-----|----|----|-----|----|----|----|------|------|-------|-----|
| 11  | 0.4 | 85 | 101 | 29 | 61 | 8   | NA | NA | NA | 0.61 | 0.36 | -0.02 | NA  |

151B- Here is a son of our new Angus herdsire Vision Prosperity. 151B is extremely extended and long bodied, and as you can see in his picture he couples this with a ton of muscle shape and thickness.

**Lot 91**

63% BALANCER HOMOZYGOUS BLACK DOUBLE POLLED BULL

**Lot 94** **TAU MR FOCUS 22Z 167B**

★ Calved: February 22, 2014 ★ Tattoo: TAU 167B ★ Reg. #: AMGV1304001

**Birth Weight: 72** **Adj. 205-day Wt: 723**

Mytty In Focus

**TAU TAU MR IN FOCUS 22Z**

TAU Ms Gunnison 028X

BABR Tsunami 447P

**TAU MS TSUNAMI 2058Z**

TAU Ms Big Sky 7282T

| CED | BW   | WW | YW | MK | TM | CEM | ST | YG   | CW | REA | MB  | FT   | FPI   |
|-----|------|----|----|----|----|-----|----|------|----|-----|-----|------|-------|
| 13  | -0.3 | 69 | 96 | 21 | 56 | 10  | 4  | -.44 | 26 | .54 | .45 | -.02 | 82.89 |

167B- A sure shot calving ease sire here that is out of In Focus 22Z and backed by a first calf heifer. He had quite the spread from birth to weaning and he exhibits a great set of carcass traits as well.



50% BALANCER HOMOZYGOUS BLACK DOUBLE POLLED BULL

**Lot 95** | **TAU MR IRON MAN 250Y 168B**

★ Calved: February 22, 2014 ★ Tattoo: TAU 168B ★ Reg. #: AMGV1290029

**Birth Weight: 82 Adj. 205-day Wt: 779**

TC Gridiron 782  
**TAU MR GRIDIRON 250Y**  
TAU Ms Tsunami 8217U

TC Gridiron 258  
**TAU MS TC GRIDIRON 9270W**  
TAU Gunnison 557R

| CED | BW | WW | YW  | MK | TM | CEM | ST | YG   | CW | REA | MB  | FT   | FPI   |
|-----|----|----|-----|----|----|-----|----|------|----|-----|-----|------|-------|
| 9   | 1  | 72 | 108 | 20 | 56 | 9   | 4  | -.17 | 35 | .68 | .21 | -.03 | 75.11 |

168B- A high weaning son of "Ironman" 250Y. 168B is soggy middled, long striding and heavily muscled. Don't overlook his genetics for growth either.

38% BALANCER HOMOZYGOUS BLACK DOUBLE POLLED BULL

**Lot 97** | **TAU MR HOT STUFF 206B**

★ Calved: March 5, 2014 ★ Tattoo: TAU 206B ★ Reg. #: AMGV1287487

**Birth Weight: 88 Adj. 205-day Wt: 725**

TC Gridiron 258  
**TC GRIDIRON 782**  
TC Quality 3161

SGRI Honor Roll S232  
**TAU MS HONOR ROLL 962W**  
TAU Cherokee 555R

| CED | BW | WW | YW  | MK | TM | CEM | ST | YG   | CW | REA | MB  | FT   | FPI   |
|-----|----|----|-----|----|----|-----|----|------|----|-----|-----|------|-------|
| 10  | 0  | 69 | 102 | 22 | 56 | 7   | 4  | -.24 | 30 | .76 | .15 | -.03 | 72.96 |

206B- Here is a son of our herdsire TC Gridiron 782. 206B is correct in his skeletal build, and attractive from the profile.

50% BALANCER BLACK DOUBLE POLLED BULL

**Lot 99** | **TAU MR GRID TOPPER 43T 218B**

★ Calved: March 11, 2014 ★ Tattoo: TAU 218B ★ Reg. #: AMGV1287510

**Birth Weight: 80 Adj. 205-day Wt: 752**

TC Grid Topper 355  
**TAU MR GRID TOPPER 43T**  
TAU Miss Ty 3130N

TAU Tuned In 55T  
**TAU MS TUNED IN 084X**  
TAU Ms 6807 532R

| CED | BW  | WW | YW  | MK | TM | CEM | ST | YG   | CW | REA | MB  | FT   | FPI   |
|-----|-----|----|-----|----|----|-----|----|------|----|-----|-----|------|-------|
| 12  | 1.2 | 67 | 104 | 12 | 46 | 8   | 2  | -.28 | 34 | .6  | .36 | -.01 | 76.47 |

218B- A son of Grid Topper 43T that is stamped with the look of his sire. 218B is soggy middled and bold ribbed, and he couples this with a flawless stride.



Lot 100

63% BALANCER DOUBLE BLACK DOUBLE POLLED BULL

**Lot 96** | **TAU MR TOTAL 4126B**

★ Calved: March 3, 2014 ★ Tattoo: TAU 4126B ★ Reg. #: AMGV1290442

**Birth Weight: 82 Adj. 205-day Wt: 761**

TC Total 410  
**DMRS MR TC TOTAL 048X**  
DMRS Rikki 52R

SGRI Honor Roll S232  
**TAU MS HONOR ROLL 9124W**  
TAU Ms New Design 1407 620S

| CED | BW  | WW | YW  | MK | TM | CEM | ST | YG   | CW | REA | MB  | FT   | FPI   |
|-----|-----|----|-----|----|----|-----|----|------|----|-----|-----|------|-------|
| 7   | 1.8 | 72 | 101 | 32 | 68 | 7   | 6  | -.22 | 33 | .69 | .26 | -.04 | 75.76 |

4126B- A grandson of TC Total, who we used to add frame and performance to his progeny. 4126B is built a lot like his sire, extremely long and soggy with a ton of capacity and muscle shape.

50% BALANCER HOMOZYGOUS BLACK DOUBLE POLLED BULL

**Lot 98** | **TAU MR TOP GUN 213B**

★ Calved: March 9, 2014 ★ Tattoo: TAU 213B ★ Reg. #: AMGV1287498

**Birth Weight: 85 Adj. 205-day Wt: 808**

TAU Mr Grid Topper 43T  
**TAU TOP GUN 292Y**  
TAU Ms 4153P

TAU Kruggerrand 70M  
**TAU KRUGERRAND 5158R**  
TAU Miss Little Montana 1175

| CED | BW | WW | YW  | MK | TM | CEM | ST | YG   | CW | REA | MB  | FT   | FPI   |
|-----|----|----|-----|----|----|-----|----|------|----|-----|-----|------|-------|
| 10  | 0  | 69 | 102 | 22 | 56 | 7   | 4  | -.24 | 30 | .76 | .15 | -.03 | 72.96 |

213B- A powerfully constructed and eye appealing son of Top Gun 292Y and out of a good Kruggerrand 70M daughter. 213B is a March born calf with a lot of quality and an 808 pound weaning weight.



Lot 98

38% BALANCER HOMOZYGOUS BLACK DOUBLE POLLED BULL

**Lot 100** | **TAU MR PROSPERITY 225B**

★ Calved: March 16, 2014 ★ Tattoo: TAU 225B ★ Reg. #: AMGV1290179

**Birth Weight: 88 Adj. 205-day Wt: 949**

S A V Prosperity 9131  
**VISION PROSPERITY 2324**  
Top Line Lassie 0849

GMCC Ruppel Gunnison N31  
**TAU MS GUNNISON 028X**  
TAU Ms Crossover 824U

| CED | BW  | WW | YW | MK | TM | CEM | ST | YG | CW | REA | MB  | FT   | FPI |
|-----|-----|----|----|----|----|-----|----|----|----|-----|-----|------|-----|
| 12  | 0.2 | 72 | 91 | 27 | 57 | 8   | NA | NA | NA | .66 | .47 | -.01 | NA  |

225B- A March son of our new Angus herdsire Vision Prosperity. 225B is as good as they get. He is attractive from the profile being level and square in his build, and he builds on this by being tremendously deep bodied, easy fleshing, and stout featured. Definite herdsire and A.I. sire potential here. 225B is a maternal brother to the InFocus son 222 sire.

38% BALANCER BLACK DOUBLE POLLED HEIFER

**Lot 101** **TAU MS SAM 335A**

★ Calved: January 29, 2013 ★ Tattoo: TAU 335A ★ Reg. #: AMGV1303269

**Birth Weight: 75 Adj. 205-day Wt: 595**

KHR Sam Spade 02S  
**VRT LADY TV SAM U451**  
 VRT Lazy TV Ms Fullback L643  
  
 TAU Mr Grid Topper 43T  
**TAU MS GRID TOPPER 43T 1098Y**  
 TAU Miss Buster 4144P

| CED | BW   | WW | YW | MK | TM | CEM | ST | YG   | CW | REA | MB   | FT   | FPI   |
|-----|------|----|----|----|----|-----|----|------|----|-----|------|------|-------|
| 16  | -0.4 | 67 | 98 | 27 | 61 | 6   | 3  | -.48 | 26 | .58 | -.01 | -.05 | 72.30 |

AI'd 4-25 to TAU Mr In Focus 22Z

75% BALANCER RED DOUBLE POLLED HEIFER

**Lot 102** **TAU MS CORNHUSKER RED 383A**

★ Calved: February 5, 2013 ★ Tattoo: TAU 383A ★ Reg. #: AMGV1256092

**Birth Weight: 85 Adj. 205-day Wt: 595**

CBA Barefoot 241H  
**CBA CORNHUSKER RED**  
 JLC Belle of Belgrad 323J  
  
 WF Beckton Lancer F442 T  
**TAU MS LANCER 860U**  
 TAU Freedom 1179L

| CED | BW  | WW | YW | MK | TM | CEM | ST | YG   | CW | REA | MB   | FT   | FPI   |
|-----|-----|----|----|----|----|-----|----|------|----|-----|------|------|-------|
| 8   | 2.8 | 67 | 96 | 28 | 62 | 8   | 5  | -.21 | 30 | .45 | -.03 | -.06 | 64.32 |

AI'd 4-25 to Ellingson Secretary 2011

75% BALANCER DOUBLE BLACK DOUBLE POLLED HEIFER

**Lot 103** **TAU MS TRENDY 3035A**

★ Calved: February 12, 2013 ★ Tattoo: TAU 3035A ★ Reg. #: AMGV1256277

**Birth Weight: 81 Adj. 205-day Wt: 610**

KCF Bennett Kingpin K403  
**JKGF TRENDSETTER 55R ET**  
 RAG Miss Kara ET  
  
 Connealy Danny Boy  
**TAU DANNY BOY 715T**  
 TAU Ms Gunnison 5215R

| CED | BW  | WW | YW | MK | TM | CEM | ST | YG   | CW | REA | MB   | FT   | FPI   |
|-----|-----|----|----|----|----|-----|----|------|----|-----|------|------|-------|
| 11  | 0.5 | 66 | 91 | 23 | 56 | 3   | 4  | -.35 | 24 | .81 | -.15 | -.06 | 63.87 |

AI'd 5-12 to TAU Mr In Focus 22Z

75% BALANCER RED DOUBLE POLLED HEIFER

**Lot 104** **TAU MS GUNNISON 230U 3125A**

★ Calved: March 5, 2013 ★ Tattoo: TAU 3125A ★ Reg. #: AMGV1256617

**Birth Weight: 78 Adj. 205-day Wt: 584**

TAU Gunnison 106R  
**TAU MR GUNNISON 106R 230U**  
 TAU Miss Power Pac 13F 333N  
  
 Sitz Alliance 6595  
**TAU MS ALLIANCE 571R**  
 TAU Miss Freedom 1197L

| CED | BW | WW | YW | MK | TM | CEM | ST | YG   | CW | REA | MB  | FT   | FPI   |
|-----|----|----|----|----|----|-----|----|------|----|-----|-----|------|-------|
| 9   | 1  | 59 | 83 | 26 | 56 | 6   | 3  | -.13 | 20 | .32 | .01 | -.03 | 62.31 |

AI'd 4-25 to TAU Mr In Focus 22Z

25% BALANCER DOUBLE BLACK DOUBLE POLLED HEIFER

**Lot 105** **TAU MS GRIDTOPPER 43T 301A**

★ Calved: January 16, 2013 ★ Tattoo: TAU 301A ★ Reg. #: AMGV1250076

**Birth Weight: 85 Adj. 205-day Wt: 628**

TC Grid Topper 355  
**TAU MR GRID TOPPER 43T**  
 TAU Miss Ty 3130N  
  
 S A V Final Answer 0035  
**TAU MS FINAL ANSWER 053X**  
 T G A Prompter 6807 557E

| CED | BW  | WW | YW  | MK | TM | CEM | ST | YG | CW | REA | MB  | FT  | FPI   |
|-----|-----|----|-----|----|----|-----|----|----|----|-----|-----|-----|-------|
| 13  | 0.7 | 70 | 107 | 15 | 50 | 8   | 3  | 0  | 35 | .41 | .37 | .01 | 78.09 |

AI'd 5-17 to SLC Freedom 178F

38% BALANCER DOUBLE BLACK DOUBLE POLLED HEIFER

**Lot 106** **TAU MS FINAL ANSWER 303A**

★ Calved: January 17, 2013 ★ Tattoo: TAU 303A ★ Reg. #: AMGV1250078

**Birth Weight: 74 Adj. 205-day Wt: 645**

Sitz Traveler 8180  
**S A V FINAL ANSWER 0035**  
 S A V Emulous 8145  
  
 HYEK Black Impact 3960N  
**TAU MS BLACK IMPACT 152Y**  
 TAU Miss Freedom 4172P

| CED | BW   | WW | YW  | MK | TM | CEM | ST | YG   | CW | REA | MB  | FT  | FPI   |
|-----|------|----|-----|----|----|-----|----|------|----|-----|-----|-----|-------|
| 15  | -1.3 | 79 | 118 | 22 | 62 | 7   | 7  | -.03 | 37 | .52 | .29 | .01 | 85.19 |

AI'd 5-17 to TAU Mr In Focus 22Z

38% BALANCER DOUBLE BLACK DOUBLE POLLED HEIFER

**Lot 107** **TAU MS FINAL ANSWER 305A**

★ Calved: January 17, 2013 ★ Tattoo: TAU 305A ★ Reg. #: AMGV1250079

**Birth Weight: 60 Adj. 205-day Wt: 600**

Sitz Traveler 8180  
**S A V FINAL ANSWER 0035**  
 S A V Emulous 8145  
  
 DCSF Post Rock Granite 200P2  
**TAU MS PR GRANITE 171Y**  
 TAU Ms New Design 1407 610S

| CED | BW   | WW | YW  | MK | TM | CEM | ST | YG   | CW | REA | MB | FT  | FPI   |
|-----|------|----|-----|----|----|-----|----|------|----|-----|----|-----|-------|
| 18  | -4.3 | 64 | 101 | 27 | 59 | 10  | 10 | -.06 | 23 | .47 | .4 | .01 | 84.31 |

AI'd 5-12 to TAU Mr In Focus 22Z

50% BALANCER BLACK DOUBLE POLLED HEIFER

**Lot 108** **TAU MS IN FOCUS 313A**

★ Calved: January 21, 2013 ★ Tattoo: TAU 313A ★ Reg. #: AMGV1250082

**Birth Weight: 70 Adj. 205-day Wt: 621**

S A F Focus of E R  
**MYTTY IN FOCUS**  
 Mytty Countess 906  
  
 TAU Mr Hy-Per Active 60W ET  
**TAU HY-PER ACTIVE 60WET 1111Y**  
 TAU Ms Honor Roll 9109W

| CED | BW   | WW | YW  | MK | TM | CEM | ST | YG  | CW | REA | MB  | FT   | FPI   |
|-----|------|----|-----|----|----|-----|----|-----|----|-----|-----|------|-------|
| 17  | -1.2 | 69 | 103 | 27 | 61 | 10  | 4  | -.1 | 29 | .46 | .45 | -.01 | 84.41 |

Pasture exposed to TAU Mr Final Answer 259Y 5-23 until 7-11

All bred heifers are AI bred then pasture exposed from 5-23 until 7-11 to TAU Mr Final Answer 259Y Registration #1185210.



38% BALANCER DOUBLE BLACK DOUBLE POLLED HEIFER

**Lot 109** | **TAU MS FINAL ANSWER 314A**

★ Calved: January 22, 2013 ★ Tattoo: TAU 314A ★ Reg. #: AMGV1250083

**Birth Weight: 70 Adj. 205-day Wt: 600**

Sitz Traveler 8180

**S A V FINAL ANSWER 0035**

S A V Emulous 8145

SLC Freedom 178F ET

**TAU MS JANELLE 108Y**

TAU Ms Gunnison 205R 9187W

| CED | BW   | WW | YW  | MK | TM | CEM | ST | YG   | CW | REA | MB  | FT | FPI   |
|-----|------|----|-----|----|----|-----|----|------|----|-----|-----|----|-------|
| 17  | -1.8 | 72 | 109 | 22 | 58 | 11  | 5  | -.06 | 32 | .53 | .26 | 0  | 81.63 |

AI'd 4-26 to TAU Mr In Focus 22Z

50% BALANCER DOUBLE BLACK DOUBLE POLLED HEIFER

**Lot 110** | **TAU MS IN FOCUS 319A**

★ Calved: January 23, 2013 ★ Tattoo: TAU 319A ★ Reg. #: AMGV1250091

**Birth Weight: 65 Adj. 205-day Wt: 562**

S A F Focus of E R

**MYTTY IN FOCUS**

Mytty Countess 906

TAU Gunnison 106R

**TAU MS GUNNISON 106R 156Y**

TAU Ms Junior 3303K 7127T ET

| CED | BW   | WW | YW | MK | TM | CEM | ST | YG   | CW | REA | MB | FT   | FPI   |
|-----|------|----|----|----|----|-----|----|------|----|-----|----|------|-------|
| 16  | -1.9 | 66 | 99 | 27 | 60 | 8   | 5  | -.11 | 26 | .37 | .4 | -.03 | 82.05 |

AI'd 5-19 to TAU Mr In Focus 22Z

38% BALANCER DOUBLE BLACK DOUBLE POLLED HEIFER

**Lot 111** | **TAU MS IN FOCUS 324A**

★ Calved: January 25, 2013 ★ Tattoo: TAU 324A ★ Reg. #: AMGV1250096

**Birth Weight: 70 Adj. 205-day Wt: 630**

S A F Focus of E R

**MYTTY IN FOCUS**

Mytty Countess 906

HYEK Black Impact 3960N

**TAU MS BLACK IMPACT 1038Y**

TAU Hot Fudge 9137W

| CED | BW   | WW | YW  | MK | TM | CEM | ST | YG   | CW | REA | MB | FT   | FPI   |
|-----|------|----|-----|----|----|-----|----|------|----|-----|----|------|-------|
| 15  | -0.7 | 70 | 110 | 27 | 63 | 6   | 4  | -.04 | 33 | .38 | .5 | -.01 | 85.87 |

AI'd 4-30 to Ruppel Gunnison

63% BALANCER DOUBLE BLACK DOUBLE POLLED HEIFER

**Lot 112** | **TAU MS GUNNISON 333A**

★ Calved: January 29, 2013 ★ Tattoo: TAU 333A ★ Reg. #: AMGV1303700

**Birth Weight: 58 Adj. 205-day Wt: 563**

VRT RUP Lazy TV Hotfudge J357

**GMCC RUPPLE GUNNISON N31**

RUP Ruppel 919L

S A V Final Answer 0035

**TAU MS FINAL ANSWER 170Y**

TAU Ms Sleepy 204P 7173T

| CED | BW   | WW | YW | MK | TM | CEM | ST | YG   | CW | REA | MB  | FT | FPI   |
|-----|------|----|----|----|----|-----|----|------|----|-----|-----|----|-------|
| 16  | -1.3 | 66 | 94 | 30 | 64 | 10  | 5  | -.38 | 26 | .70 | .11 |    | 74.61 |

AI'd 5-18 to TAU Mr In Focus 22Z

38% BALANCER DOUBLE BLACK DOUBLE POLLED HEIFER

**Lot 113** | **TAU MS CONSENSUS 334A**

★ Calved: January 29, 2013 ★ Tattoo: TAU 334A ★ Reg. #: AMGV1250365

**Birth Weight: 83 Adj. 205-day Wt: 515**

Connealy Consensus

**CONNELY CONSENSUS 7229**

Blue Lilly of Conanga 16

TJB Sleepy 161F ET

**TAU SLEEPY 5234R**

TAU Ms Alliance 8141H

| CED | BW  | WW | YW  | MK | TM | CEM | ST | YG   | CW | REA | MB  | FT   | FPI   |
|-----|-----|----|-----|----|----|-----|----|------|----|-----|-----|------|-------|
| 8   | 1.6 | 69 | 103 | 34 | 68 | 8   | 2  | -.24 | 33 | .71 | .54 | -.05 | 81.95 |

AI'd 5-2 to TAU Mr In Focus 22Z

38% BALANCER DOUBLE BLACK DOUBLE POLLED HEIFER

**Lot 114** | **TAU MS GRID TOPPER 43T 336A ET**

★ Calved: January 29, 2013 ★ Tattoo: TAU 336A ★ Reg. #: AMGV1303523

**Birth Weight: 80 Adj. 205-day Wt: 556**

TC Grid Topper 355

**TAU MR GRID TOPPER 43T**

TAU Miss Ty 3130N

Angus

**TAU MS 4153P**

TAU Ms Doctor Pepper 8108H

| CED | BW  | WW | YW  | MK | TM | CEM | ST | YG | CW | REA | MB  | FT | FPI |
|-----|-----|----|-----|----|----|-----|----|----|----|-----|-----|----|-----|
| 10  | 1.6 | 68 | 102 | 14 | 48 | 10  | NA | NA | NA | .59 | .39 | 0  | NA  |

AI'd 4-26 to TAU Mr In Focus 22Z

38% BALANCER DOUBLE BLACK DOUBLE POLLED HEIFER

**Lot 115** | **TAU MS FINAL ANSWER 338A**

★ Calved: January 30, 2013 ★ Tattoo: TAU 338A ★ Reg. #: AMGV1250110

**Birth Weight: 70 Adj. 205-day Wt: 623**

Sitz Traveler 8180

**S A V FINAL ANSWER 0035**

S A V Emulous 8145

HYEK Black Impact 3960N

**TAU MS BLACK BEAUTY 1050Y ET**

TAU Ms Dr P of 516E 716G

| CED | BW   | WW | YW  | MK | TM | CEM | ST | YG   | CW | REA | MB  | FT | FPI   |
|-----|------|----|-----|----|----|-----|----|------|----|-----|-----|----|-------|
| 16  | -1.4 | 74 | 110 | 27 | 64 | 6   | 6  | -.07 | 33 | .52 | .32 | 0  | 83.69 |

AI'd 5-19 to TAU Mr In Focus 22Z

50% BALANCER DOUBLE POLLED HEIFER

**Lot 116** | **TAU MS TOP GUN 349A**

★ Calved: February 1, 2013 ★ Tattoo: TAU 349A ★ Reg. #: AMGV1250371

**Birth Weight: 80 Adj. 205-day Wt: 604**

TAU Mr Grid Topper 43T

**TAU TOP GUN 292Y**

TAU Ms 4153P

WF Beckton Lancer F442 T

**TAU MS LANCER 883U**

TAU Ms Lm 099K

| CED | BW  | WW | YW  | MK | TM | CEM | ST | YG   | CW | REA | MB  | FT   | FPI   |
|-----|-----|----|-----|----|----|-----|----|------|----|-----|-----|------|-------|
| 12  | 0.5 | 72 | 101 | 14 | 50 | 7   | 6  | -.12 | 30 | .39 | .12 | -.04 | 72.82 |

Pasture exposed to TAU Mr Final Answer 259Y 5-23 until 7-11

All bred heifers are AI bred then pasture exposed from 5-23 until 7-11 to TAU Mr Final Answer 259Y Registration #1185210.

BRED HEIFERS

50% BALANCER DOUBLE BLACK DOUBLE POLLED HEIFER

**Lot 117** **TAU MS HOOVER DAM 355A**

★ Calved: February 2, 2013 ★ Tattoo: TAU 355A ★ Reg. #: AMGV1250373

**Birth Weight: 80 Adj. 205-day Wt: 517**

SydGen C C & 7

**HOOVER DAM**

Erica of Ellston C124

SLC Freedom 178F ET

**TAU TAU FREEDOM 426P**

TAU Ms 049F of BS 504F 856H

| CED | BW   | WW | YW | MK | TM | CEM | ST | YG    | CW | REA | MB  | FT    | FPI   |
|-----|------|----|----|----|----|-----|----|-------|----|-----|-----|-------|-------|
| 12  | -0.7 | 52 | 81 | 29 | 56 | 10  | 4  | -0.35 | 17 | .78 | .41 | -0.06 | 73.05 |

AI'd 4-25 to TAU Mr In Focus 22Z

63% BALANCER DOUBLE BLACK DOUBLE POLLED HEIFER

**Lot 118** **TAU MS FINAL COUNTDOWN 360A**

★ Calved: February 3, 2013 ★ Tattoo: TAU 360A ★ Reg. #: AMGV1250376

**Birth Weight: 85 Adj. 205-day Wt: 604**

S A V Final Answer 0035

**TAU FINAL COUNTDOWN 59Y**

TAU Ms Gunnison 7211T ET

BABR Tsunami 447P

**TAU MISS TSUNAMI 733T**

TAU Miss Rita 433D

| CED | BW | WW | YW  | MK | TM | CEM | ST | YG    | CW | REA | MB  | FT    | FPI  |
|-----|----|----|-----|----|----|-----|----|-------|----|-----|-----|-------|------|
| 10  | 1  | 78 | 107 | 25 | 64 | 7   | 6  | -0.15 | 34 | .51 | .06 | -0.04 | 74.9 |

Pasture exposed to TAU Mr Final Answer 259Y 5-23 until 7-11

50% BALANCER BLACK DOUBLE POLLED HEIFER

**Lot 119** **TAU MS FINAL ANSWER 370A**

★ Calved: February 4, 2013 ★ Tattoo: TAU 370A ★ Reg. #: AMGV1250286

**Birth Weight: 78 Adj. 205-day Wt: 584**

Sitz Traveler 8180

**S A V FINAL ANSWER 0035**

S A V Emulous 8145

TAU Mr Sleepy 204P

**TAU MS SLEEPY 204P 7161T**

TAU Ms Blacksmith 646F

| CED | BW   | WW | YW | MK | TM | CEM | ST | YG    | CW | REA | MB  | FT    | FPI   |
|-----|------|----|----|----|----|-----|----|-------|----|-----|-----|-------|-------|
| 14  | -1.1 | 67 | 97 | 29 | 63 | 12  | 6  | -0.11 | 25 | .47 | .19 | -0.01 | 75.97 |

AI'd 5-13 to TAU Outright 162A

63% BALANCER DOUBLE BLACK DOUBLE POLLED HEIFER

**Lot 120** **TAU MS TOP GUN 373A**

★ Calved: February 4, 2013 ★ Tattoo: TAU 373A ★ Reg. #: AMGV1250441

**Birth Weight: 76 Adj. 205-day Wt: 722**

TAU Mr Grid Topper 43T

**TAU TOP GUN 292Y**

TAU Ms 4153P

BABR Tsunami 447P

**TAU MISS TSUNAMI 759T**

TAU Ms Lead On 463P

| CED | BW | WW | YW  | MK | TM | CEM | ST | YG    | CW | REA | MB  | FT    | FPI   |
|-----|----|----|-----|----|----|-----|----|-------|----|-----|-----|-------|-------|
| 8   | 1  | 83 | 117 | 19 | 60 | 9   | 6  | -0.06 | 40 | .36 | .14 | -0.03 | 78.49 |

AI'd 5-10 to TAU Mr In Focus 22Z

50% BALANCER DOUBLE BLACK DOUBLE POLLED HEIFER

**Lot 121** **TAU MS PRODUCTIVE DAM 381A**

★ Calved: February 5, 2013 ★ Tattoo: TAU 381A ★ Reg. #: AMGV1256091

**Birth Weight: 75 Adj. 205-day Wt: 549**

Connealy Product 568

**CONNEALY FINAL PRODUCT**

Ebonista of Conanga 471

SEPT Rodeo Drive J14

**TAU MISS RODEO DRIVE 267M**

TAU Ms Bud of 404D 928J

| CED | BW  | WW | YW  | MK | TM | CEM | ST | YG   | CW | REA | MB  | FT | FPI   |
|-----|-----|----|-----|----|----|-----|----|------|----|-----|-----|----|-------|
| 8   | 0.1 | 72 | 115 | 31 | 67 | 5   | 5  | -0.1 | 38 | .73 | .19 | 0  | 76.29 |

AI'd 5-10 to TAU Mr In Focus 22Z

50% BALANCER DOUBLE BLACK DOUBLE POLLED HEIFER

**Lot 122** **TAU MS HOOVER DAM 391A**

★ Calved: February 6, 2013 ★ Tattoo: TAU 391A ★ Reg. #: AMGV1250452

**Birth Weight: 82 Adj. 205-day Wt: 554**

SydGen C C & 7

**HOOVER DAM**

Erica of Ellston C124

BABR Tsunami 447P

**TAU MS TSUNAMI 946W**

TAU Miss Freedom 216M

| CED | BW   | WW | YW | MK | TM | CEM | ST | YG    | CW | REA | MB  | FT    | FPI   |
|-----|------|----|----|----|----|-----|----|-------|----|-----|-----|-------|-------|
| 10  | -0.2 | 59 | 90 | 31 | 61 | 9   | 3  | -0.31 | 23 | .82 | .49 | -0.04 | 77.72 |

AI'd 5-17 to TAU Mr In Focus 22Z

63% BALANCER DOUBLE BLACK DOUBLE POLLED HEIFER

**Lot 123** **TAU MS IRON WOMAN 3005A**

★ Calved: February 8, 2013 ★ Tattoo: TAU 3005A ★ Reg. #: AMGV1250469

**Birth Weight: 84 Adj. 205-day Wt: 640**

TC Gridiron 782

**TAU MR GRIDIRON 250Y**

TAU Ms Tsunami 8217U

GMCC Ruppel Gunnison N31

**TAU MS GUNNISON 8140U**

TAU Miss Hoff Ultra 185L

| CED | BW  | WW | YW  | MK | TM | CEM | ST | YG    | CW | REA | MB | FT    | FPI   |
|-----|-----|----|-----|----|----|-----|----|-------|----|-----|----|-------|-------|
| 10  | 1.8 | 74 | 109 | 22 | 59 | 8   | 6  | -0.13 | 36 | .54 | .2 | -0.03 | 75.31 |

AI'd 5-15 to Lazy TV Sam 0451

50% BALANCER DOUBLE BLACK DOUBLE POLLED HEIFER

**Lot 124** **TAU MS IRONMAN 3019A**

★ Calved: February 10, 2013 ★ Tattoo: TAU 3019A ★ Reg. #: AMGV1256127

**Birth Weight: 85 Adj. 205-day Wt: 611**

TC Gridiron 782

**TAU MR GRIDIRON 250Y**

TAU Ms Tsunami 8217U

TC Grid Topper 355

**TAU MISS GRID TOPPER 864U**

TAU Ms Empire 007K 200B

| CED | BW  | WW | YW  | MK | TM | CEM | ST | YG    | CW | REA | MB  | FT    | FPI   |
|-----|-----|----|-----|----|----|-----|----|-------|----|-----|-----|-------|-------|
| 10  | 0.6 | 68 | 104 | 15 | 50 | 8   | 3  | -0.12 | 32 | .46 | .21 | -0.03 | 72.99 |

AI'd 4-25 to TAU Final Lead 42A

All bred heifers are AI bred then pasture exposed from 5-23 until 7-11 to TAU Mr Final Answer 259Y Registration #1185210.



38% BALANCER DOUBLE BLACK DOUBLE POLLED HEIFER

**Lot 125** **TAU MS FINAL ANSWER 3025A**

★ Calved: February 11, 2013 ★ Tattoo: TAU 3025A ★ Reg. #: AMGV1304020

**Birth Weight: 77 Adj. 205-day Wt: 581**

Sitz Traveler 8180

**S A V FINAL ANSWER 0035**

S A V Emulous 8145

GMCC Ruppel Gunnison N31

**TAU MS GUNNISON 149Y**

TAU Miss In Focus 926W

| CED | BW   | WW | YW  | MK | TM | CEM | ST | YG   | CW | REA | MB  | FT | FPI   |
|-----|------|----|-----|----|----|-----|----|------|----|-----|-----|----|-------|
| 18  | -0.3 | 68 | 106 | 25 | 61 | 11  | 4  | -.06 | 30 | .57 | .48 |    | 86.67 |

AI'd 5-10 to TAU Mr In Focus 22Z

63% BALANCER RED DOUBLE POLLED HEIFER

**Lot 126** **TAU MS FREEDOM 3029A**

★ Calved: February 12, 2013 ★ Tattoo: TAU 3029A ★ Reg. #: AMGV1256150

**Birth Weight: 68 Adj. 205-day Wt: 617**

VAA Leachman New Day 205B

**SLC FREEDOM 178F ET**

BB Miss 61Y

HXC HXC Conquest 4405P

**TAU MS CONQUEST 153Y**

TAU Miss Blackjack 114L

| CED | BW   | WW | YW | MK | TM | CEM | ST | YG   | CW | REA | MB   | FT   | FPI   |
|-----|------|----|----|----|----|-----|----|------|----|-----|------|------|-------|
| 12  | -1.3 | 62 | 89 | 20 | 51 | 8   | 5  | -.27 | 21 | .25 | -.11 | -.04 | 64.89 |

AI'd 5-19 to TAU Mr In Focus 22Z

50% BALANCER DOUBLE BLACK DOUBLE POLLED HEIFER

**Lot 127** **TAU MS HOOVER DAM 3032A**

★ Calved: February 12, 2013 ★ Tattoo: TAU 3032A ★ Reg. #: AMGV1256260

**Birth Weight: 85 Adj. 205-day Wt: 607**

SydGen C C & 7

**HOOVER DAM**

Erica of Ellston C124

GMCC Ruppel Gunnison N31

**TAU GUNNISON 557R**

TAU Big Sky 191M

| CED | BW   | WW | YW | MK | TM | CEM | ST | YG   | CW | REA | MB  | FT   | FPI |
|-----|------|----|----|----|----|-----|----|------|----|-----|-----|------|-----|
| 14  | -0.3 | 59 | 89 | 29 | 58 | 10  | 5  | -.35 | 22 | .93 | .54 | -.04 | 80  |

AI'd 4-23 to TAU Outright 162A

50% BALANCER DOUBLE BLACK DOUBLE POLLED HEIFER

**Lot 128** **TAU MS AMHERST 3034A**

★ Calved: February 12, 2013 ★ Tattoo: TAU 3034A ★ Reg. #: AMGV1303728

**Birth Weight: 88 Adj. 205-day Wt: 599**

HYEK Black Impact 3960N

**TAU AMHERST 238Y**

TAU Miss Black Image 144L

TAU Krugerrand 70M

**TAU MS KRUGERRAND 10M 4160P**

T G A Ext 532E

| CED | BW | WW | YW | MK | TM | CEM | ST | YG   | CW | REA | MB  | FT   | FPI   |
|-----|----|----|----|----|----|-----|----|------|----|-----|-----|------|-------|
| 9   | 1  | 63 | 91 | 20 | 51 | 5   | 4  | -.04 | 25 | .21 | .14 | -.02 | 66.96 |

AI'd 5-15 to TAU Outright 162A

50% BALANCER DOUBLE BLACK DOUBLE POLLED HEIFER

**Lot 129** **TAU MS TOP GUN 3040A**

★ Calved: February 13, 2013 ★ Tattoo: TAU 3040A ★ Reg. #: AMGV1256368

**Birth Weight: 70 Adj. 205-day Wt: 571**

TAU Mr Grid Topper 43T

**TAU TOP GUN 292Y**

TAU Ms 4153P

TC Freedom 104

**TAU MISS TC FREEDOM 892U**

TAU Ms Blacksmith 964J

| CED | BW   | WW | YW | MK | TM | CEM | ST | YG   | CW | REA | MB  | FT   | FPI   |
|-----|------|----|----|----|----|-----|----|------|----|-----|-----|------|-------|
| 12  | -0.4 | 64 | 92 | 24 | 56 | 11  | 7  | -.12 | 24 | .31 | .09 | -.03 | 69.88 |

Pasture exposed to TAU Mr Final Answer 259Y 5-23 until 7-11

50% BALANCER DOUBLE BLACK DOUBLE POLLED HEIFER

**Lot 130** **TAU MS VIRGINIAN 3041A**

★ Calved: February 13, 2013 ★ Tattoo: TAU 3041A ★ Reg. #: AMGV1256369

**Birth Weight: 75 Adj. 205-day Wt: 584**

Connealy Virginian 681

**SDCC VIRGINIAN 318T**

Plattermere Queen W 423

BABR Tsunami 447P

**TAU MISS TSUNAMI 739T**

TAU Miss Beretta 457P ET

| CED | BW   | WW | YW | MK | TM | CEM | ST | YG  | CW | REA | MB  | FT   | FPI  |
|-----|------|----|----|----|----|-----|----|-----|----|-----|-----|------|------|
| 10  | -0.7 | 61 | 91 | 23 | 53 | 6   | 3  | -.1 | 23 | .35 | .07 | -.02 | 67.3 |

AI'd 5-17 to TAU Mr In Focus 22Z

63% BALANCER DOUBLE BLACK DOUBLE POLLED HEIFER

**Lot 131** **TAU MS TOTAL 3046A**

★ Calved: February 14, 2013 ★ Tattoo: TAU 3046A ★ Reg. #: AMGV1256389

**Birth Weight: 78 Adj. 205-day Wt: 614**

TC Total 410

**DMRS MR TC TOTAL 048X**

DMRS Rikki 52R

SGRI Honor Roll S232

**TAU MS HONOR ROLL 955W**

TAU Ms New Design 1407 604S

| CED | BW  | WW | YW | MK | TM | CEM | ST | YG   | CW | REA | MB  | FT   | FPI   |
|-----|-----|----|----|----|----|-----|----|------|----|-----|-----|------|-------|
| 8   | 1.3 | 67 | 94 | 29 | 62 | 6   | 8  | -.25 | 27 | .69 | .24 | -.04 | 72.83 |

AI'd 5-1 to TAU Mr In Focus 22Z



All bred heifers are AI bred then pasture exposed from 5-23 until 7-11 to TAU Mr Final Answer 259Y Registration #1185210.

BRED HEIFERS

25% BALANCER DOUBLE BLACK DOUBLE POLLED HEIFER

**Lot 132** **TAU MS FINAL ANSWER 3050A**

★ Calved: February 15, 2013 ★ Tattoo: TAU 3050A ★ Reg. #: AMGV1256399

**Birth Weight: 60 Adj. 205-day Wt: 625**

Sitz Traveler 8180  
**S A V FINAL ANSWER 0035**  
 S A V Emulous 8145

TC Gridiron 782  
**TAU MS GRIDIRON 782 1077Y**  
 TAU Ms Gunnison 106R 8194U

| CED | BW   | WW | YW  | MK | TM | CEM | ST | YG   | CW | REA | MB  | FT  | FPI   |
|-----|------|----|-----|----|----|-----|----|------|----|-----|-----|-----|-------|
| 18  | -3.3 | 70 | 106 | 24 | 58 | 10  | 5  | -.09 | 28 | .57 | .44 | .01 | 87.12 |

AI'd 5-2 to SLC Freedom 178F

25% BALANCER DOUBLE BLACK DOUBLE POLLED HEIFER

**Lot 133** **TAU MS IN FOCUS 3053A**

★ Calved: February 15, 2013 ★ Tattoo: TAU 3053A ★ Reg. #: AMGV1303801

**Birth Weight: 85 Adj. 205-day Wt: 553**

S A F Focus of E R  
**MYTTY IN FOCUS**  
 Mytty Countess 906

DCSF Post Rock Granite 200P2  
**TAU MS GRANITE 181Y**  
 TAU Ms New Design 878 254

| CED | BW   | WW | YW  | MK | TM | CEM | ST | YG | CW | REA | MB  | FT | FPI   |
|-----|------|----|-----|----|----|-----|----|----|----|-----|-----|----|-------|
| 16  | -0.8 | 65 | 106 | 25 | 57 | 7   | 4  | 0  | 30 | .04 | .59 | 0  | 84.54 |

AI'd 5-15 to Ruppel Gunnison

50% BALANCER DOUBLE BLACK DOUBLE POLLED HEIFER

**Lot 134** **TAU MS AMHERST 3069A**

★ Calved: February 17, 2013 ★ Tattoo: TAU 3069A ★ Reg. #: AMGV1302978

**Birth Weight: 83 Adj. 205-day Wt: 636**

HYEK Black Impact 3960N  
**TAU AMHERST 238Y**  
 TAU Miss Black Image 144L

Bon View New Design 878  
**TAU MS NEW DESIGN 878 308**  
 T G M S Vision 1134 of 4420

| CED | BW  | WW | YW | MK | TM | CEM | ST | YG   | CW | REA | MB | FT   | FPI   |
|-----|-----|----|----|----|----|-----|----|------|----|-----|----|------|-------|
| 10  | 0.9 | 66 | 95 | 25 | 58 | 6   | 3  | -.05 | 27 | .23 | .2 | -.02 | 71.19 |

AI'd 5-15 to TAU Outright 162A

38% BALANCER DOUBLE BLACK DOUBLE POLLED HEIFER

**Lot 135** **TAU MS GRID TOPPER 43T 3091A**

★ Calved: February 23, 2013 ★ Tattoo: TAU 3091A ★ Reg. #: AMGV1256499

**Birth Weight: 84 Adj. 205-day Wt: 619**

TC Grid Topper 355  
**TAU MR GRID TOPPER 43T**  
 TAU Ms Ty 3130N

H A R B Tanker 717 JH  
**EGL TEMPLE X214**  
 EGL U829

| CED | BW  | WW | YW  | MK | TM | CEM | ST | YG  | CW | REA | MB  | FT  | FPI   |
|-----|-----|----|-----|----|----|-----|----|-----|----|-----|-----|-----|-------|
| 12  | 0.7 | 67 | 102 | 14 | 48 | 9   | 2  | .07 | 31 | .18 | .28 | .01 | 73.18 |

AI'd 5-19 to TAU Mr In Focus 22Z

50% BALANCER DOUBLE BLACK DOUBLE POLLED HEIFER

**Lot 136** **TAU MS GRID TOPPER 43T 3094A**

★ Calved: February 23, 2013 ★ Tattoo: TAU 3094A ★ Reg. #: AMGV1256502

**Birth Weight: 78 Adj. 205-day Wt: 605**

TC Grid Topper 355  
**TAU MR GRID TOPPER 43T**  
 TAU Ms Ty 3130N

Mytty In Focus  
**TAU MS IN FOCUS 018X**  
 TAU Ms Tsunami 8217U

| CED | BW  | WW | YW  | MK | TM | CEM | ST | YG   | CW | REA | MB  | FT   | FPI   |
|-----|-----|----|-----|----|----|-----|----|------|----|-----|-----|------|-------|
| 13  | 0.2 | 70 | 102 | 14 | 49 | 9   | 4  | -.03 | 30 | .33 | .32 | -.01 | 76.92 |

AI'd 5-13 to TAU Outright 162A

50% BALANCER DOUBLE BLACK DOUBLE POLLED HEIFER

**Lot 137** **TAU MS GRID TOPPER 43T 3102A**

★ Calved: February 25, 2013 ★ Tattoo: TAU 3102A ★ Reg. #: AMGV1303727

**Birth Weight: 86 Adj. 205-day Wt: 494**

TC Grid Topper 355  
**TAU MR GRID TOPPER 43T**  
 TAU Ms Ty 3130N

Mytty In Focus  
**TAU MS IN FOCUS 924W**  
 TAU TAU Ms Gunnison 7288T

| CED | BW  | WW | YW  | MK | TM | CEM | ST | YG   | CW | REA | MB  | FT   | FPI   |
|-----|-----|----|-----|----|----|-----|----|------|----|-----|-----|------|-------|
| 14  | 0.6 | 69 | 103 | 13 | 48 | 9   | 2  | -.24 | 31 | .51 | .39 | -.01 | 79.17 |

AI'd 4-27 to TAU Final Lead 42A

63% BALANCER RED DOUBLE POLLED HEIFER

**Lot 138** **TAU MS FREEDOM 16Y 3105A**

★ Calved: February 26, 2013 ★ Tattoo: TAU 3105A ★ Reg. #: AMGV1303998

**Birth Weight: 68 Adj. 205-day Wt: 645**

SLC Freedom 178F ET  
**TAU MR FREEDOM 16Y**  
 TAU Ms Gunnison 9157W

TAU Mr Grid Topper 43T  
**TAU MS GRID TOPPER 43T 1141Y**  
 TAU Miss CC 8111U

| CED | BW   | WW | YW | MK | TM | CEM | ST | YG   | CW | REA | MB  | FT   | FPI   |
|-----|------|----|----|----|----|-----|----|------|----|-----|-----|------|-------|
| 14  | -0.7 | 66 | 90 | 18 | 50 | NA  | NA | -.25 | 22 | .57 | .09 | -.02 | 72.88 |

AI'd 5-9 to TAU Mr In Focus 22Z

50% BALANCER DOUBLE BLACK DOUBLE POLLED HEIFER

**Lot 139** **TAU MS AMHERST 3110A**

★ Calved: February 28, 2013 ★ Tattoo: TAU 3110A ★ Reg. #: AMGV1303802

**Birth Weight: 88 Adj. 205-day Wt: 656**

HYEK Black Impact 3960N  
**TAU AMHERST 238Y**  
 TAU Miss Black Image 144L

TAU Kruggerrand 70M  
**TAU MS KRUGGERRAND 70M 849U**  
 TAU Ms BW 469P

| CED | BW  | WW | YW | MK | TM | CEM | ST | YG   | CW | REA | MB | FT   | FPI   |
|-----|-----|----|----|----|----|-----|----|------|----|-----|----|------|-------|
| 9   | 1.5 | 66 | 92 | 25 | 58 | 1   | 4  | -.06 | 25 | .28 | .1 | -.02 | 67.47 |

AI'd 5-18 to TAU Outright 162A

All bred heifers are AI bred then pasture exposed from 5-23 until 7-11 to TAU Mr Final Answer 259Y Registration #1185210.



63% BALANCER DOUBLE BLACK DOUBLE POLLED HEIFER

**Lot 140** **TAU MS NEW DESIGN 12W 3112A**

★ Calved: February 28, 2013 ★ Tattoo: TAU 3112A ★ Reg. #: AMGV1256557

**Birth Weight: 82 Adj. 205-day Wt: 637**

Bon View New Design 1407

**TAU MR NEW DESIGN 12W**

TAU Miss Gunnison 106R 7109T

SLWD Mr Bucky

**TAU MS BUCKY 0203X**

TAU Krugerrand 5158R

| CED | BW  | WW | YW | MK | TM | CEM | ST | YG   | CW | REA | MB  | FT   | FPI   |
|-----|-----|----|----|----|----|-----|----|------|----|-----|-----|------|-------|
| 11  | 1.6 | 58 | 86 | 23 | 52 | 6   | 8  | -.16 | 23 | .43 | .24 | -.03 | 67.28 |

AI'd 4-29 to TAU Outright 162A

38% BALANCER DOUBLE BLACK DOUBLE POLLED HEIFER

**Lot 142** **TAU MS GRIDIRON 3122A**

★ Calved: March 3, 2013 ★ Tattoo: TAU 3122A ★ Reg. #: AMGV1256593

**Birth Weight: 84 Adj. 205-day Wt: 616**

TC Gridiron 258

**TC GRIDIRON 782**

TC Quality 3161

GMCC Ruppel Gunnison N31

**TAU TAU MS GUNNISON 027X**

TAU Ms Tsunami 8157U

| CED | BW | WW | YW | MK | TM | CEM | ST | YG   | CW | REA | MB  | FT   | FPI  |
|-----|----|----|----|----|----|-----|----|------|----|-----|-----|------|------|
| 10  | 1  | 64 | 95 | 23 | 55 | 6   | 4  | -.16 | 28 | .63 | .24 | -.01 | 71.4 |

AI'd 5-17 to TAU Mr In Focus 22Z

50% BALANCER DOUBLE BLACK DOUBLE POLLED HEIFER

**Lot 144** **TAU MS TOTAL 3136A**

★ Calved: March 9, 2013 ★ Tattoo: TAU 3136A ★ Reg. #: AMGV1256635

**Birth Weight: 88 Adj. 205-day Wt: 635**

TC Total 410

**DMRS MR TC TOTAL 048X**

DMRS Rikki 52R

Kraye Ambush JK 433

**TAU MS AMBUSH 661S**

TAU Miss U Sound 325C

| CED | BW  | WW | YW  | MK | TM | CEM | ST | YG   | CW | REA | MB  | FT   | FPI   |
|-----|-----|----|-----|----|----|-----|----|------|----|-----|-----|------|-------|
| 6   | 1.1 | 66 | 103 | 32 | 65 | 8   | 6  | -.19 | 33 | .61 | .34 | -.04 | 75.47 |

AI'd 5-17 to TAU Mr In Focus 22Z

50% BALANCER DOUBLE BLACK DOUBLE POLLED HEIFER

**Lot 141** **TAU MS TOTAL 3121A**

★ Calved: March 2, 2013 ★ Tattoo: TAU 3121A ★ Reg. #: AMGV1302980

**Birth Weight: 78 Adj. 205-day Wt: 544**

TC Total 410

**DMRS MR TC TOTAL 048X**

DMRS Rikki 52R

GMCC Ruppel Gunnison N31

**TAU MS GUNNISON 530R**

TAU Ms New Design 878 255

| CED | BW  | WW | YW | MK | TM | CEM | ST | YG   | CW | REA | MB  | FT   | FPI   |
|-----|-----|----|----|----|----|-----|----|------|----|-----|-----|------|-------|
| 10  | 0.2 | 61 | 86 | 30 | 60 | 6   | 5  | -.18 | 21 | .56 | .33 | -.02 | 73.39 |

AI'd 5-13 to TAU Mr In Focus 22Z

50% BALANCER DOUBLE BLACK DOUBLE POLLED HEIFER

**Lot 143** **TAU MS GRIDIRON 3129A**

★ Calved: March 7, 2013 ★ Tattoo: TAU 3129A ★ Reg. #: AMGV1256600

**Birth Weight: 78 Adj. 205-day Wt: 603**

TC Gridiron 258

**TC GRIDIRON 782**

TC Quality 3161

TAU Gunnison 106R

**TAU MS GUNNISON 106R 0175X**

TAU Miss Freedom 371N Twin

| CED | BW  | WW | YW | MK | TM | CEM | ST | YG   | CW | REA | MB | FT   | FPI   |
|-----|-----|----|----|----|----|-----|----|------|----|-----|----|------|-------|
| 10  | 0.6 | 62 | 93 | 19 | 50 | 7   | 4  | -.19 | 26 | .56 | .1 | -.03 | 66.91 |

AI'd 5-17 to TAU Mr In Focus 22Z

38% BALANCER DOUBLE BLACK DOUBLE POLLED HEIFER

**Lot 145** **TAU MS GRID TOPPER 43T 3143A**

★ Calved: March 12, 2013 ★ Tattoo: TAU 3143A ★ Reg. #: AMGV1256652

**Birth Weight: 86 Adj. 205-day Wt: 637**

TC Grid Topper 355

**TAU MR GRID TOPPER 43T**

TAU Ms Ty 3130N

S A V Final Answer 0035

**TAU MS FINAL ANSWER 016X**

TAU Ms Titanium 8147U

| CED | BW  | WW | YW  | MK | TM | CEM | ST | YG   | CW | REA | MB  | FT   | FPI   |
|-----|-----|----|-----|----|----|-----|----|------|----|-----|-----|------|-------|
| 13  | 0.6 | 69 | 101 | 14 | 49 | 8   | 5  | -.06 | 31 | .43 | .26 | -.01 | 74.57 |

Pasture exposed to TAU Mr Final Answer 259Y 5-23 until 7-11

All bred heifers are AI bred then pasture exposed from 5-23 until 7-11 to TAU Mr Final Answer 259Y Registration #1185210.



TAU MIA 363A--Reserve Champion Gelbvieh Female at the Kansas City American Royal. Grand Champion Female at the Iowa State Fair.



TAU Ms Fancy 414B--Grand Champion Balancer Heifer Calf at the Kansas City American Royal. Grand Champion Balancer Heifer Calf at the 2014 Junior Nationals. Reserve Grand Champion Balancer Heifer Calf at the Iowa State Fair.

BRED HEIFERS

*Gelbvieh females have  
maternal superiority,  
longevity, milk,  
less mature size*

75% PUREBRED DOUBLE BLACK DOUBLE POLLED HEIFER

**Lot 146** *TAU MS GRID TOPPER 43T 4027B*

★ Calved: February 10, 2014 ★ Tattoo: TAU 4027B ★ Reg. #: AMGV1287274

**Birth Weight: 84 Adj. 205-day Wt: 614**

TC Grid Topper 355  
**TAU MR GRID TOPPER 43T**  
TAU Ms Ty 3130N

ELK CK Wild Bill 42U  
**TAU MS WILD BILL 125Y**  
TAU Ms Titanium 8147U

| GED | BW  | WW | YW | MK | TM | CEM | ST | YG   | CW | REA | MB  | FT   | FPI   |
|-----|-----|----|----|----|----|-----|----|------|----|-----|-----|------|-------|
| 11  | 1.8 | 66 | 95 | 9  | 42 | 6   | 5  | -.35 | 28 | .59 | .12 | -.04 | 68.36 |

25% BALANCER DOUBLE BLACK DOUBLE POLLED HEIFER

**Lot 147** *TAU MS IN FOCUS 446B*

★ Calved: January 30, 2014 ★ Tattoo: TAU 446B ★ Reg. #: AMGV1287200

**Birth Weight: 58 Adj. 205-day Wt: 588**

S A F Focus of E R  
**MYTTY IN FOCUS**  
Mytty Countess 906

GMCC Ruppel Gunnison N31  
**TAU TAU MS GUNNISON 248Z**  
TAU Ms Rob Roy 0101X

| GED | BW   | WW | YW | MK | TM | CEM | ST | YG   | CW | REA | MB | FT   | FPI   |
|-----|------|----|----|----|----|-----|----|------|----|-----|----|------|-------|
| 17  | -3.5 | 56 | 90 | 26 | 55 | 9   | 3  | -.07 | 20 | .32 | .5 | -.01 | 80.82 |

38% BALANCER DOUBLE BLACK DOUBLE POLLED HEIFER

**Lot 148** *TAU MS FINAL ANSWER 458B*

★ Calved: February 1, 2014 ★ Tattoo: TAU 458B ★ Reg. #: AMGV1290269

**Birth Weight: 70 Adj. 205-day Wt: 639**

Sitz Traveler 8180  
**S A V FINAL ANSWER 0035**  
S A V Emulous 8145

SGRI Honor Roll S232  
**TAU TAU MS HONOR ROLL 252Z**  
TAU Ms Gunnison 205R 9187W

| GED | BW   | WW | YW | MK | TM | CEM | ST | YG   | CW | REA | MB  | FT   | FPI   |
|-----|------|----|----|----|----|-----|----|------|----|-----|-----|------|-------|
| 12  | -0.3 | 73 | 94 | 24 | 57 | 9   | 3  | -.08 | 26 | .41 | .22 | -.01 | 77.21 |

63% BALANCER DOUBLE BLACK DOUBLE POLLED HEIFER

**Lot 149** *TAU MS GRID TOPPER 43T 493B*

★ Calved: February 6, 2014 ★ Tattoo: TAU 493B ★ Reg. #: AMGV1303719

**Birth Weight: 83 Adj. 205-day Wt: 611**

TC Grid Topper 355  
**TAU MR GRID TOPPER 43T**  
TAU Ms Ty 3130N

GMCC Ruppel Gunnison N31  
**TAU MS GUNNISON 149Y**  
TAU Miss In Focus 926W

| GED | BW  | WW | YW | MK | TM | CEM | ST | YG  | CW | REA | MB  | FT   | FPI   |
|-----|-----|----|----|----|----|-----|----|-----|----|-----|-----|------|-------|
| 14  | 1.8 | 65 | 96 | 15 | 48 | 8   | 4  | -.3 | 28 | .67 | .28 | -.01 | 72.93 |

38% BALANCER DOUBLE BLACK DOUBLE POLLED HEIFER

**Lot 150** *TAU MS GRIDIRON 782 495B*

★ Calved: February 6, 2014 ★ Tattoo: TAU 495B ★ Reg. #: AMGV1287226

**Birth Weight: 78 Adj. 205-day Wt: 512**

TC Gridiron 258  
**TC GRIDIRON 782**  
TC Quality 3161

SGRI Honor Roll S232  
**TAU MS HONOR ROLL 9103W**  
TAU Ms Gunnison 6132S

| GED | BW  | WW | YW | MK | TM | CEM | ST | YG   | CW | REA | MB  | FT   | FPI   |
|-----|-----|----|----|----|----|-----|----|------|----|-----|-----|------|-------|
| 10  | 0.4 | 53 | 91 | 23 | 54 | 8   | 4  | -.27 | 25 | .77 | .11 | -.04 | 63.61 |

63% BALANCER DOUBLE BLACK DOUBLE POLLED HEIFER

**Lot 151** *TAU MS GRID TOPPER 43T 497B*

★ Calved: February 6, 2014 ★ Tattoo: TAU 497B ★ Reg. #: AMGV1287228

**Birth Weight: 84 Adj. 205-day Wt: 600**

TC Grid Topper 355  
**TAU MR GRID TOPPER 43T**  
TAU Ms Ty 3130N

HYEK Black Impact 3960N  
**TAU MS BLACK IMPACT 1097Y**  
TAU Ms King Rob 6206S

| GED | BW  | WW | YW  | MK | TM | CEM | ST | YG   | CW | REA | MB  | FT   | FPI   |
|-----|-----|----|-----|----|----|-----|----|------|----|-----|-----|------|-------|
| 11  | 1.2 | 66 | 102 | 18 | 52 | 6   | 5  | -.31 | 32 | .62 | .12 | -.02 | 70.12 |

25% BALANCER DOUBLE BLACK DOUBLE POLLED HEIFER

**Lot 152** *TAU MS IN FOCUS 22Z 4009B*

★ Calved: February 9, 2014 ★ Tattoo: TAU 4009B ★ Reg. #: AMGV1302981

**Birth Weight: 70 Adj. 205-day Wt: 585**

Mytty In Focus  
**TAU TAU MR IN FOCUS 22Z**  
TAU Ms Gunnison 028X

TAU Mr Grid Topper 43T  
**TAU MS GRID TOPPER 43T 2038Z**

| GED | BW   | WW | YW  | MK | TM | CEM | ST | YG   | CW | REA | MB | FT   | FPI   |
|-----|------|----|-----|----|----|-----|----|------|----|-----|----|------|-------|
| 14  | -0.7 | 65 | 101 | 18 | 52 | 8   | 3  | -.26 | 29 | .43 | .6 | -.02 | 85.55 |



63% BALANCER DOUBLE BLACK DOUBLE POLLED HEIFER

**Lot 153** ***TAU MS GRID TOPPER 43T 4010B***

★ Calved: February 9, 2014 ★ Tattoo: TAU 4010B ★ Reg. #: AMGV1287249

**Birth Weight: 85** **Adj. 205-day Wt: 664**

TC Grid Topper 355

**TAU MR GRID TOPPER 43T**

TAU Ms Ty 3130N

TAU Mr Krugerrand 70M 130P

**TAU KRUGGERAND 70M 130P 180Y**

TAU Freedom 5182R

| CED | BW  | WW | YW  | MK | TM | CEM | ST | YG   | CW | REA | MB  | FT   | FPI   |
|-----|-----|----|-----|----|----|-----|----|------|----|-----|-----|------|-------|
| 10  | 2.1 | 74 | 103 | 14 | 50 | 8   | 4  | -.31 | 32 | .57 | .13 | -.03 | 72.82 |

25% BALANCER DOUBLE BLACK DOUBLE POLLED HEIFER

**Lot 154** ***TAU MS GRID TOPPER 4013B***

★ Calved: February 9, 2014 ★ Tattoo: TAU 4013B ★ Reg. #: AMGV1287263

**Birth Weight: 85** **Adj. 205-day Wt: 628**

Connealy Onward

**SITZ WISDOM 481T**

Sitz Elluna Elite 94P

TAU Mr Grid Topper 43T

**TAU MS GRID TOPPER 43T 9273W**

TAU Ms Red Pepper 669F

| CED | BW  | WW | YW  | MK | TM | CEM | ST | YG   | CW | REA | MB  | FT   | FPI   |
|-----|-----|----|-----|----|----|-----|----|------|----|-----|-----|------|-------|
| 10  | 0.8 | 68 | 111 | 20 | 54 | 4   | 2  | -.07 | 37 | .48 | .45 | -.01 | 79.28 |

50% BALANCER BLACK DOUBLE POLLED HEIFER

**Lot 155** ***TAU MS GRID TOPPER 43T 4031B***

★ Calved: February 11, 2014 ★ Tattoo: TAU 4031B ★ Reg. #: AMGV1303803

**Birth Weight: 80** **Adj. 205-day Wt: 631**

TC Grid Topper 355

**TAU MR GRID TOPPER 43T**

TAU Ms Ty 3130N

HXC HXC Conquest 4405P

**TAU MS CONQUEST 183Y**

TAU TG Red Nite 191L of 551F

| CED | BW  | WW | YW | MK | TM | CEM | ST | YG   | CW | REA | MB  | FT   | FPI   |
|-----|-----|----|----|----|----|-----|----|------|----|-----|-----|------|-------|
| 13  | 0.2 | 63 | 93 | 14 | 45 | 8   | 2  | -.26 | 24 | .48 | .25 | -.01 | 72.54 |

38% BALANCER DOUBLE BLACK DOUBLE POLLED HEIFER

**Lot 156** ***TAU MS WISDOM 4034B***

★ Calved: February 11, 2014 ★ Tattoo: TAU 4034B ★ Reg. #: AMGV1287285

**Birth Weight: 88** **Adj. 205-day Wt: 576**

Connealy Onward

**SITZ WISDOM 481T**

Sitz Elluna Elite 94P

TJB Night Moves 593R ET

**TAU MS NIGHT MOVES 8197U**

TAU Ms Gunnison 547R

| CED | BW  | WW | YW  | MK | TM | CEM | ST | YG   | CW | REA | MB  | FT   | FPI   |
|-----|-----|----|-----|----|----|-----|----|------|----|-----|-----|------|-------|
| 11  | 0.4 | 76 | 125 | 24 | 63 | 3   | 4  | -.04 | 45 | .48 | .48 | -.01 | 85.92 |

38% BALANCER DOUBLE BLACK DOUBLE POLLED HEIFER

**Lot 157** ***TAU MS IN FOCUS 22Z 4052B***

★ Calved: February 14, 2014 ★ Tattoo: TAU 4052B ★ Reg. #: AMGV1288156

**Birth Weight: 75** **Adj. 205-day Wt: 622**

Mytty In Focus

**TAU TAU MR IN FOCUS 22Z**

TAU Ms Gunnison 028X

TAU Mr Grid Topper 43T

**TAU MS 43T 2113Z**

BAG Miss 4N 113S

| CED | BW   | WW | YW | MK | TM | CEM | ST | YG  | CW | REA | MB  | FT   | FPI   |
|-----|------|----|----|----|----|-----|----|-----|----|-----|-----|------|-------|
| 15  | -0.6 | 64 | 91 | 20 | 51 | 8   | 2  | -.1 | 22 | .39 | .35 | -.02 | 77.12 |

50% BALANCER DOUBLE BLACK DOUBLE POLLED HEIFER

**Lot 158** ***TAU MS TOP GUN 292Y 4059B***

★ Calved: February 14, 2014 ★ Tattoo: TAU 4059B ★ Reg. #: AMGV1287988

**Birth Weight: 84** **Adj. 205-day Wt: 567**

TAU Mr Grid Topper 43T

**TAU TOP GUN 292Y**

TAU Ms 4153P

GMCC Ruple Gunnison N31

**TAU MS GUNNISON 530R**

TAU Ms New Design 878 255

| CED | BW   | WW | YW | MK | TM | CEM | ST | YG   | CW | REA | MB | FT   | FPI   |
|-----|------|----|----|----|----|-----|----|------|----|-----|----|------|-------|
| 13  | -0.3 | 62 | 94 | 19 | 52 | 9   | 6  | -.08 | 25 | .4  | .2 | -.01 | 70.83 |

38% BALANCER DOUBLE BLACK DOUBLE POLLED HEIFER

**Lot 159** ***TAU MS FINAL COUNT DOWN 59Y 4062B***

★ Calved: February 14, 2014 ★ Tattoo: TAU 4062B ★ Reg. #: AMGV1288158

**Birth Weight: 85** **Adj. 205-day Wt: 528**

S A V Final Answer 0035

**TAU FINAL COUNTDOWN 59Y**

TAU Ms Gunnison 7211T ET

TJB Night Moves 593R ET

**TAU MS NIGHT MOVES 8166U**

TAU Ms New Frontier 5114

| CED | BW  | WW | YW  | MK | TM | CEM | ST | YG   | CW | REA | MB  | FT   | FPI   |
|-----|-----|----|-----|----|----|-----|----|------|----|-----|-----|------|-------|
| 11  | 1.2 | 76 | 127 | 21 | 63 | 5   | 6  | -.04 | 46 | .44 | .39 | -.03 | 82.55 |

50% BALANCER DOUBLE BLACK DOUBLE POLLED HEIFER

**Lot 160** ***TAU MS IRON MAN 250Y 4063B***

★ Calved: February 15, 2014 ★ Tattoo: TAU 4063B ★ Reg. #: AMGV1288284

**Birth Weight: 68** **Adj. 205-day Wt: 385**

TC Gridiron 782

**TAU MR GRIDIRON 250Y**

TAU Ms Tsunami 8217U

G13 Structure

**TAU MS STRUCTURE 694S**

TAU Ms Power Pac 9070 4115P

| CED | BW  | WW | YW | MK | TM | CEM | ST | YG  | CW | REA | MB  | FT   | FPI   |
|-----|-----|----|----|----|----|-----|----|-----|----|-----|-----|------|-------|
| 10  | 0.3 | 64 | 94 | 24 | 56 | 7   | 4  | -.2 | 26 | .41 | .17 | -.06 | 70.72 |

50% BALANCER DOUBLE BLACK DOUBLE POLLED HEIFER

**Lot 161** *TAU MS TOP GUN 4064B*

★ Calved: February 15, 2014 ★ Tattoo: TAU 4064B ★ Reg. #: AMGV1287352

**Birth Weight: 80 Adj. 205-day Wt: 636**

TAU Mr Grid Topper 43T  
**TAU TOP GUN 292Y**  
 TAU Ms 4153P  
  
 TC Gridiron 258  
**TAU GRIDIRON 9125W**  
 TAU Gunnison 5151R

| CED | BW | WW | YW  | MK | TM | CEM | ST | YG   | CW | REA | MB  | FT   | FPI   |
|-----|----|----|-----|----|----|-----|----|------|----|-----|-----|------|-------|
| 11  | 1  | 73 | 105 | 18 | 54 | 10  | 6  | -.23 | 33 | .72 | .18 | -.04 | 74.37 |

38% BALANCER DOUBLE BLACK DOUBLE POLLED HEIFER

**Lot 162** *TAU MS PRETTY LADY 4065B*

★ Calved: February 15, 2014 ★ Tattoo: TAU 4065B ★ Reg. #: AMGV1287353

**Birth Weight: 80 Adj. 205-day Wt: 625**

TC Gridiron 258  
**TC GRIDIRON 782**  
 TC Quality 3161  
  
 GMCC Ruppel Gunnison N31  
**TAU MISS GUNNISON 8103U**  
 TAU Hyline Right Time 6105S

| CED | BW  | WW | YW | MK | TM | CEM | ST | YG   | CW | REA | MB  | FT   | FPI   |
|-----|-----|----|----|----|----|-----|----|------|----|-----|-----|------|-------|
| 12  | 0.7 | 62 | 92 | 25 | 55 | 6   | 4  | -.23 | 25 | .7  | .28 | -.03 | 68.02 |

63% BALANCER DOUBLE BLACK DOUBLE POLLED HEIFER

**Lot 163** *TAU MS TOP GUN 4073B*

★ Calved: February 18, 2014 ★ Tattoo: TAU 4073B ★ Reg. #: AMGV1287376

**Birth Weight: 90 Adj. 205-day Wt: 644**

TAU Mr Grid Topper 43T  
**TAU TOP GUN 292Y**  
 TAU Ms 4153P  
  
 TJB Night Moves 593R ET  
**TAU MS NIGHT MOVES 8169U**  
 TAU Gunnison 557R

| CED | BW  | WW | YW  | MK | TM | CEM | ST | YG   | CW | REA | MB  | FT   | FPI   |
|-----|-----|----|-----|----|----|-----|----|------|----|-----|-----|------|-------|
| 9   | 2.4 | 84 | 112 | 13 | 54 | 8   | 4  | -.09 | 39 | .36 | .07 | -.04 | 74.99 |

50% BALANCER DOUBLE BLACK DOUBLE POLLED HEIFER

**Lot 164** *TAU MS IRON MAN 4079B*

★ Calved: February 18, 2014 ★ Tattoo: TAU 4079B ★ Reg. #: AMGV1287379

**Birth Weight: 84 Adj. 205-day Wt: 620**

TC Gridiron 782  
**TAU MR GRIDIRON 250Y**  
 TAU Ms Tsunami 8217U  
  
 S A V 8180 Traveler 004  
**TAU MS TRAVELER 004 653S**  
 TAU Miss Freedom 210M

| CED | BW  | WW | YW  | MK | TM | CEM | ST | YG   | CW | REA | MB  | FT   | FPI   |
|-----|-----|----|-----|----|----|-----|----|------|----|-----|-----|------|-------|
| 10  | 0.4 | 69 | 106 | 24 | 58 | 8   | 3  | -.06 | 33 | .35 | .12 | -.01 | 71.52 |

25% BALANCER DOUBLE BLACK DOUBLE POLLED HEIFER

**Lot 165** *TAU MS FINAL ANSWER 4082B*

★ Calved: February 19, 2014 ★ Tattoo: TAU 4082B ★ Reg. #: AMGV1287373

**Birth Weight: 60 Adj. 205-day Wt: 631**

Sitz Traveler 8180  
**S A V FINAL ANSWER 0035**  
 S A V Emulous 8145  
  
 S A V Bismarck 5682  
**TAU MS BISMARCK 254Z**  
 TAU Miss Rodeo Drive 267M

| CED | BW   | WW | YW  | MK | TM | CEM | ST | YG   | CW | REA | MB  | FT | FPI   |
|-----|------|----|-----|----|----|-----|----|------|----|-----|-----|----|-------|
| 17  | -.23 | 71 | 113 | 22 | 58 | 12  | 2  | -.09 | 33 | .6  | .42 | 0  | 86.13 |

75% BALANCER DOUBLE BLACK DOUBLE POLLED HEIFER

**Lot 166** *TAU MS GUNNISON 230U 4087B*

★ Calved: February 20, 2014 ★ Tattoo: TAU 4087B ★ Reg. #: AMGV1287393

**Birth Weight: 84 Adj. 205-day Wt: 498**

TAU Gunnison 106R  
**TAU MR GUNNISON 106R 230U**  
 TAU Miss Power Pac 13F 333N  
  
 TC Gridiron 258  
**TAU MS GRIDIRON 058X**  
 TAU Ms Savy 811H

| CED | BW  | WW | YW | MK | TM | CEM | ST | YG  | CW | REA | MB  | FT   | FPI   |
|-----|-----|----|----|----|----|-----|----|-----|----|-----|-----|------|-------|
| 9   | 1.3 | 54 | 88 | 24 | 56 | 8   | 3  | -.3 | 24 | .67 | .06 | -.06 | 61.48 |

38% BALANCER BLACK DOUBLE POLLED HEIFER

**Lot 167** *TAU MS FINAL COUNTDOWN 4100B*

★ Calved: February 22, 2014 ★ Tattoo: TAU 4100B ★ Reg. #: AMGV1292290

**Birth Weight: 89 Adj. 205-day Wt: 646**

S A V Final Answer 0035  
**TAU FINAL COUNTDOWN 59Y**  
 TAU Ms Gunnison 7211T ET  
  
 WF Beckton Lancer F442 T  
**TAU MS LANCER 817U**  
 TAU Miss Freedom 155L

| CED | BW  | WW | YW  | MK | TM | CEM | ST | YG   | CW | REA | MB  | FT   | FPI   |
|-----|-----|----|-----|----|----|-----|----|------|----|-----|-----|------|-------|
| 14  | 0.3 | 71 | 104 | 21 | 57 | 5   | 5  | -.14 | 31 | .56 | .23 | -.03 | 76.84 |

**Have a Great BEEF Experience with Traeger.**

★

*Sale Day Special*



*Taste -Food tastes better when cooked with pure wood pellets!*

*Smoke -Flip a switch and now you own the best smoker!*

★ *Cooks Better -No need to babysit this grill- fully automatic. Fewer flare-ups!* ★

*Safe -Far safer than gas or charcoal! No gas explosions, no hot coals. Safe, "politically correct" all natural, hardwood barbecue pellets!*

*Environmentally Friendly -Wood pellets are a clean-burning, 100% natural, renewable resource.*

**Purchase from the Taubenheims**

38% BALANCER DOUBLE BLACK DOUBLE POLLED HEIFER

**Lot 168** ***TAU MS PROSPERITY 4108B***

★ Calved: February 25, 2014 ★ Tattoo: TAU 4108B ★ Reg. #: AMGV1302982

**Birth Weight: 80 Adj. 205-day Wt: 598**

S A V Prosperity 9131

**VISION PROSPERITY 2324**

Top Line Lassie 0849

RTRT Solution

**TAU MS SOLUTION 9131W**

TAU 3198N

| CED | BW  | WW | YW  | MK | TM | CEM | ST | YG | CW | REA | MB  | FT   | FPI |
|-----|-----|----|-----|----|----|-----|----|----|----|-----|-----|------|-----|
| 7   | 1.2 | 70 | 103 | 23 | 58 | 6   | NA | NA | NA | .65 | .45 | -.01 | NA  |

25% BALANCER DOUBLE BLACK DOUBLE POLLED HEIFER

**Lot 169** ***TAU MS IN FOCUS 4117B***

★ Calved: February 27, 2014 ★ Tattoo: TAU 4117B ★ Reg. #: AMGV1288215

**Birth Weight: 75 Adj. 205-day Wt: 608**

S A F Focus of E R

**MYTTY IN FOCUS**

Mytty Countess 906

TAU Gunnison 106R

**TAU TAU MS GUNNISON 106 2086Z**

TAU Ms Grid Topper 992W

| CED | BW   | WW | YW  | MK | TM | CEM | ST | YG   | CW | REA | MB  | FT   | FPI   |
|-----|------|----|-----|----|----|-----|----|------|----|-----|-----|------|-------|
| 16  | -0.8 | 67 | 103 | 21 | 54 | 8   | 4  | -.07 | 29 | .36 | .52 | -.01 | 83.59 |

63% BALANCER DOUBLE BLACK DOUBLE POLLED HEIFER

**Lot 170** ***TAU MS TOTAL 4120B***

★ Calved: March 1, 2014 ★ Tattoo: TAU 4120B ★ Reg. #: AMGV1287481

**Birth Weight: 86 Adj. 205-day Wt: 604**

TC Total 410

**DMRS MR TC TOTAL 048X**

DMRS Rikki 52R

SLC Freedom 178F ET

**TAU MS FREEDOM 6277S**

TAU Miss Gold Robber 154L

| CED | BW  | WW | YW  | MK | TM | CEM | ST | YG   | CW | REA | MB  | FT   | FPI   |
|-----|-----|----|-----|----|----|-----|----|------|----|-----|-----|------|-------|
| 6   | 2.1 | 68 | 106 | 29 | 65 | 5   | 5  | -.14 | 36 | .49 | .12 | -.04 | 69.15 |

50% BALANCER DOUBLE BLACK DOUBLE POLLED HEIFER

**Lot 171** ***TAU MS CONSENSUS 4145B***

★ Calved: March 11, 2014 ★ Tattoo: TAU 4145B ★ Reg. #: AMGV1287507

**Birth Weight: 80 Adj. 205-day Wt: 570**

Connealy Consensus

**CONNEALY CONSENSUS 7229**

Blue Lilly of Conanga 16

GMCC Ruppel Gunnison N31

**TAU GUNNISON 557R**

TAU Big Sky 191M

| CED | BW | WW | YW  | MK | TM | CEM | ST | YG   | CW | REA | MB | FT   | FPI  |
|-----|----|----|-----|----|----|-----|----|------|----|-----|----|------|------|
| 12  | 1  | 70 | 101 | 29 | 63 | 9   | 4  | -.16 | 31 | .65 | .5 | -.01 | 82.1 |

38% BALANCER DOUBLE BLACK DOUBLE POLLED HEIFER

**Lot 172** ***TAU MS TOTAL 4155B***

★ Calved: March 13, 2014 ★ Tattoo: TAU 4155B ★ Reg. #: AMGV1287518

**Birth Weight: 84 Adj. 205-day Wt: 565**

TC Total 410

**DMRS MR TC TOTAL 048X**

DMRS Rikki 52R

TC Grid Topper 355

**TAU MS GRID TOPPER 992W**

TAU Ms Empire 007K 200B

| CED | BW  | WW | YW | MK | TM | CEM | ST | YG   | CW | REA | MB  | FT   | FPI   |
|-----|-----|----|----|----|----|-----|----|------|----|-----|-----|------|-------|
| 10  | 0.5 | 64 | 97 | 27 | 59 | 6   | 4  | -.16 | 28 | .52 | .33 | -.03 | 74.64 |

63% BALANCER DOUBLE BLACK DOUBLE POLLED HEIFER

**Lot 173** ***TAU MS GRID TOPPER 43T 4179B***

★ Calved: March 25, 2014 ★ Tattoo: TAU 4179B ★ Reg. #: AMGV1303257

**Birth Weight: 87 Adj. 205-day Wt: 747**

TC Grid Topper 355

**TAU MR GRID TOPPER 43T**

TAU Ms Ty 3130N

TAU Mr Gunnison 106R 230U

**TAU GUNNISON 106 230U 1041Y**

TAU Miss Traveler 6807 407P

| CED | BW  | WW | YW | MK | TM | CEM | ST | YG   | CW | REA | MB  | FT   | FPI   |
|-----|-----|----|----|----|----|-----|----|------|----|-----|-----|------|-------|
| 11  | 1.3 | 66 | 96 | 13 | 45 | 5   | 2  | -.33 | 27 | .58 | .22 | -.03 | 71.86 |

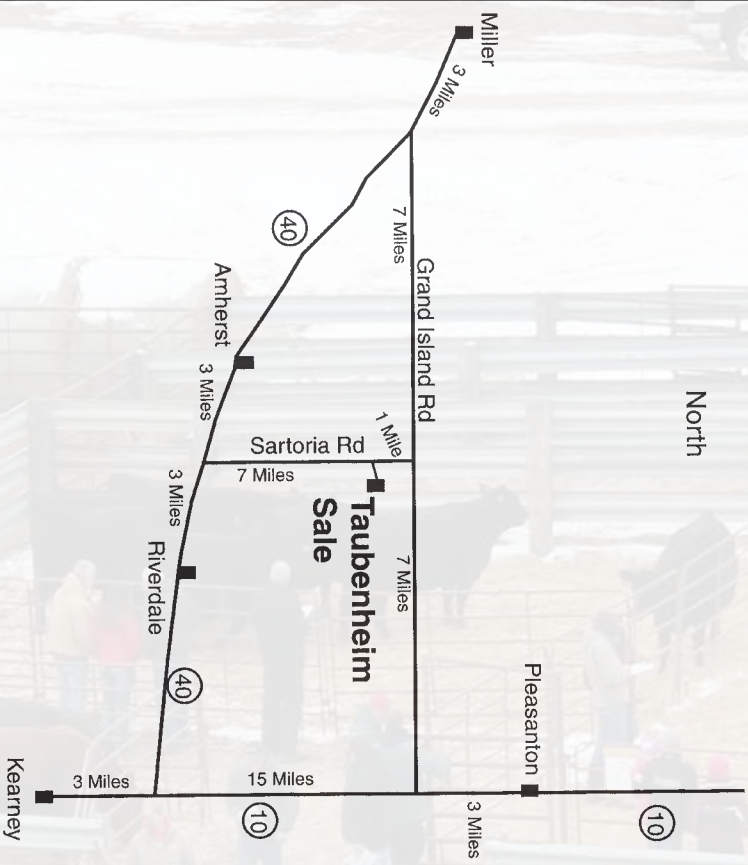
**Gelbvieh-Cross Females: Nobody does it better!**



Data from the Meat Animal Research Center (MARC) confirm the unmatched performance of Gelbvieh-sired females for maximum pounds of weaning weight per cow exposed. Many Continental breeds produce good feeder cattle, but fall short in maternal traits when it comes to working in the pasture. MARC research along with the experience of commercial cattlemen proves that Gelbvieh-cross females excel in fertility, milking ability, disposition, and pounds of calf weaned. This unique combination makes Gelbvieh the Continental breed of choice if you want to keep replacements while still producing high-value feeder cattle.



## Sale Facility at the Ranch



### From: Amherst

3 Miles East on Hwy 40, 7 Miles North

### Miller

3 Miles Southeast on Hwy 40  
7 Miles East to Sartoria

### Pleasanton

3 Miles South to Grand Island Rd  
7 Miles West to Sartoria Rd

Taubenheim Gelbvieh  
23685 Sartoria Road  
Amherst, NE 68812

To:

Please bring this catalog with you to the sale!